

*“Special places to stay”*

*The ‘Hiše s tradicijo’ in Slovenia are distinguishable for their tradition and character, which have been bestowed upon them by their former owners. Their traditional ambience and homeliness blend into a touch of romanticism. Quality accommodation is complemented by a carefully preserved natural environment, as well as by the healthy, varied gastronomy based on lovingly-created home produce. These houses invite visitors to try a different, richer holiday experience in a unique atmosphere.*

**HIŠE S TRADICIJO**

Mala ulica 8

1000 Ljubljana · Slovenia

**Tel** (+386) 1 434 2660**Fax** (+386) 1 434 2464**Email** [info@hisestradicijo.com](mailto:info@hisestradicijo.com)[www.hisestradicijo.com](http://www.hisestradicijo.com)**HIŠE S TRADICIJO**

The tradition of a building is reflected in its architecture and decoration, but above all through personal contact with the host family. The host can prepare a traditional dinner on request, and is always pleased to explain the main features and past history of both the house and the local area. Besides this, guests can enjoy themselves and relax in the quiet surroundings, visit any of the numerous natural wonders of Slovenia, get acquainted with the cultural heritage and gastronomy of the region, sample the excellent Slovenian wines or choose from one of the many options for outdoor leisure activities, such as cycling, horse-back riding, golf, alpine and cross-country skiing, swimming, hiking or fishing.

The “Hiše s Tradicijo” are in three categories, according to traditional diversity in architecture, furniture, customs and gastronomy. The category is not influenced by the various types of building.

- A** Castles, Mansions, Manors
- B** Country estate houses and “bourgeois” houses
- C** Plain rural buildings

The fulfilment of requirements for the lowest, 3rd category is a fundamental condition for the building to be included in the “Hiše s Tradicijo” network and the basis for awarding the “Hiša s Tradicijo” symbol of specialization.

- 01 FIRBAS · Cerkevjak, Cogetinci
- 02 KLET TREBČE · Bistrica ob Sotli, Podsreda
- 03 LOČNIKAR · Vitanje, Skomarje
- 04 PLESNIK · Solčava, Logarska dolina
- 05 SLAMAR · Bloke, Nova vas
- 06 SORŽEV MLIN · Vojnik, Nova cerkev
- 07 ŠERUGA · Novo mesto, Sela pri Ratežu
- 08 ZDOLŠEK · Šentjur pri Celju, Ponikva
- 09 ŽELINC · Cerkno
- 10 MATJAŽEVA DOMAČIJA · Novo mesto, Paha
- 11 SALARO · Piran, Sečovlje



**Mr. Alojz Firbas**

Cogetinci 60 · SI-2236 Cerkenjak · Slovenia



The Firbas country home is in the typical architectural style of this part of Slovenia. This 160-year-old home is on the top of a hill, slightly apart from its neighbours. The homestead includes a stable with horses, cattle, goats, rabbits and chickens, a fruit orchard, vineyard, and home-grown vegetables. The landlady makes superb domestic dishes accompanied by homemade fruit juices and wine. Children are keen to help with the farm chores, go horse riding or on horse-and-buggy rides. There is also a beach volleyball court, a small football field, and an archery area. Guests can hire a bike and set off to visit the numerous mineral springs and other natural attractions in the area.

**Location**

Cerkvenjak, Cogetinci

**Approach**

From Brnik airport (which is 188 km from Firbas), join the A2 motorway following signs for Ljubljana. Follow the signs into Ljubljana, and then for Maribor onto the A1 motorway. At Farm (142 km) turn right onto the E57 (route 430) and pass Maribor. Exit Maribor on the E57 / E59 / Route 437 and turn right on Route 3 toward Lenart v Slovenskih Goricah. At Lenart, turn right towards Osek, Brengova, Komarnica, Cogetinci. At Cogetinci turn right on Ivanjski vrh to Firbas.

**Annual closing**

Open all year

**Facilities | Activities**

Sledging, archery, rafting, horseback riding. Visiting cultural and natural attractions, such as the windmill on Stara Gora, mineral springs, Negova castle, ethnological collection.

**Accommodation**

8 Bedrooms (1 double, 6 triple rooms, 1 room for 4 people)  
1 apartment for 3 people  
All rooms with shower/toilet and TV.

**Email** firbas@siol.net**Mrs. Marija Smalčič**

Trebče 82a · SI-3256 · Bistrica ob Sotli · Slovenia

**Annual closing**

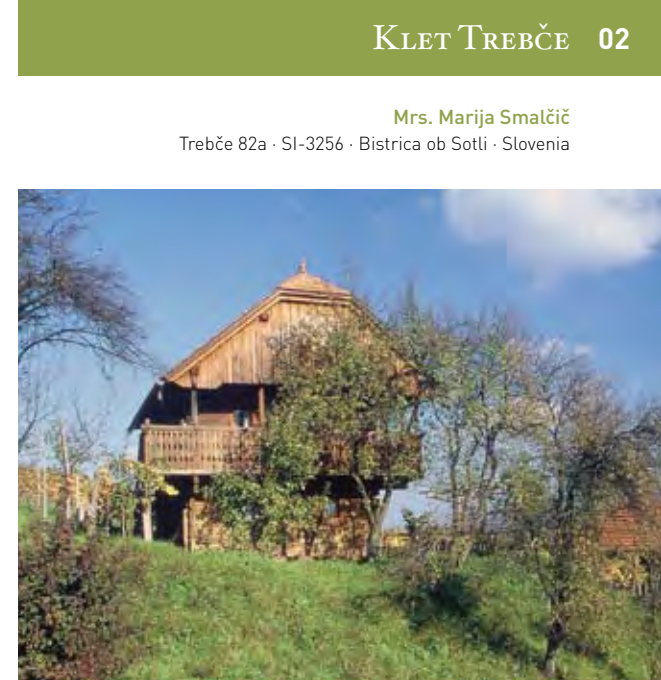
Open all year

**Facilities | Activities**

Cycling, fishing, hiking, bathing in health spa, mushroom-picking. Visiting cultural and natural attractions, such as Kozjansko park, Podsreda and Pilštajn with pillory, Podsreda castle, Sveta Gora, Repnice.

**Accommodation**

2 apartments (1 for 3 people and 1 for 2)  
All rooms with shower/toilet.

**Email** klet.trebce@siol.net

Klet Trebče lies in the midst of a vineyard offering a fascinating view of the valley. This traditional homestead was built in 1724, which is engraved in the stone. The family are beekeepers and winegrowers. Guests have the opportunity to pick mushrooms and medicinal herbs, go fishing and cycling. Interesting places to visit in the area include the Olimia health spa, Podsreda castle, Levstik mill, and Sveta Gora, which is a place of pilgrimage. Visitors like to return to Klet Trebče for its good, hearty domestic meals. Some of the specialties include buckwheat bread with cold cuts, buckwheat with sauerkraut and a glass of excellent homemade wine.

**Location**

Bistrica ob Sotli, Podsreda

**Approach**

From Brnik airport (125 km from the farm), follow the signs for Ljubljana onto the A2 motorway. Then in Ljubljana, follow the signs for Maribor onto the A1 motorway. At Celje – Dramlje (78 km) take route 423 towards Šentjur, pass Šentjur and follow signs for Podsreda. At Podsreda (123 km) drive towards Bistrica and after Bistrica turn left to Trebče.

**Mr. Slavko Ločnikar**

Skomarje 47 · SI-3214 Zreče · Slovenia



The Ločnikar homestead lies in the village of Skomarje in the Pohorje hills. It is more than 400 years old and has preserved its typical village architecture. Guests can visit the cultural attractions in the village, go bathing in the nearby Zreče health spa, visit the Rogla ski centre and many other places of interest, including Črno Lake, the Lovrenc Lakes and Mt Brinjeva Gora.

Guests can make themselves at home, help with the farm chores and cooking, or simply witness the making of such domestic delicacies as minced meat, roast lamb and Pohorje omelette. The family also makes homemade blueberry brandy and natural juices, which go well with domestic dishes.

**Location**

Vitanje, Skomarje

**Approach**

From Brnik airport (146 km from the farm), follow the signs for Ljubljana onto the A2 motorway, then in Ljubljana follow the signs for Maribor onto the A1 motorway. Leave the motorway following signs for Slovenske konjice. From Slovenske konjice, follow signs for Zreče on route 701 and at Zreče turn left toward Resnik, then turn left again to Ločnikar at Skomarje.

**Annual closing**

Open all year

**Facilities | Activities**

Fishing, mushroom-picking, hiking, bathing in health spa, skiing. Visiting cultural and natural attractions, including the Skomar house, an old smokehouse, Črno Jezero (Black Lake) and the traditional festivities attached to the annual killing of a pig.

**Accommodation**

5 Bedrooms (2 double, 1 triple rooms, 2 rooms for 4 people)  
All rooms with shower/toilet.

**Email** locnikar@siol.net**Mrs. Mija Plesnik**

Logarska dolina 13 · SI-3335 Solčava · Slovenia

**Annual closing**

Open all year

**Facilities | Activities**

Cross-country skiing, mushroom-picking, horse-and-buggy rides, hunting, cycling. Visiting cultural and natural attractions, such as Potočka zijalka, the source of the Savinja river, the Raftsman's Ball, hunters' festivities.

**Accommodation**

5 Bedrooms (4 double, 1 triple rooms)  
All rooms with shower/toilet.

**Email** plesnik.doo@siol.net

The Plesnik family is one of the three oldest and most distinguished families in Logarska Dolina, and were pioneers of tourism in this breathtaking valley in the Kamnik-Savinja Alps. Logarska valley is an ideal starting point for hiking trips in the area, and offers a host of other recreation opportunities, such as cross-country skiing, cycling, mushroom-picking and even hunting.

The family arranges wine tasting in its cellar, where guests are served domestic delicacies, including cold cuts, dairy products and homemade brandy. In the homely atmosphere of good food and wine, the landlord tells guests about the history of the valley and its attractions, which may also be visited with a guide.

**Location**

Solčava, Logarska dolina

**Approach**

From Brnik airport (65 km from the farm), follow signs for Kranj. Near Kranj, turn right toward Zgornje Jezersko on route 210. Enter Austria via the Zg. Jezersko mountain pass. Follow the B52 road, and close to Bad Vellach, turn right and go back into Slovenia (56 km). Drive straight on, turn right into Logarska dolina and continue to Plesnik.

**Mr. Slavko Starman**

Nova vas 45 · SI-1385 Nova vas · Slovenia



The Slamar guesthouse, a magnificent country homestead built in 1857, is in the centre of the breathtaking Bloke plateau. You may explore this oasis of tranquility and unspoilt nature above Cerknica Lake on foot, by bike or on horseback. The ski equipment used by Slovenia's first skiers, who came from the Bloke region, is exhibited at the guesthouse. The Bloke skiers were first mentioned in 1689 by Janez Vajkard Valvasor, a Slovene writer, in his famous work "the Glory of the Duchy of Carniola".

The guesthouse offers a variety of homemade dishes, such as buckwheat, štruklji (cheese dumplings) and žlikrofi (ravioli with a special filling) with sage. You might also like to try the homemade brandy with herbs.

**Location**

Bloke, Nova vas

**Approach**

From Brnik airport (84 km from the guesthouse), follow the signs for Ljubljana onto the A2 motorway. Then in Ljubljana follow signs for Postojna and Koper onto the A1 motorway. Leave the motorway at Unec and drive to Cerknica on route 212. Carry on to Bloška polica (the Bloke plateau) and Sodržica on route 212. The Slamar house is signposted on the right at Nova vas.

**Annual closing**

Open all year

**Facilities | Activities**

Fishing, cross-country skiing, skydiving, riding school, cycling  
Visiting cultural and natural attractions, such as the carnival in Cerknica, Križna and the Postojna Cave, Bloke Lake, Snežnik Castle.

**Accommodation**

6 Bedrooms (1 single, 4 double rooms, 1 room for 4 people)  
All rooms with shower/toilet.

**Email** penzion.slamar@siol.net**Mr. Oton Samec**

Polže 1 · SI-3203 Nova Cerkev · Slovenia

**Annual closing**

Open all year

**Facilities | Activities**

Horseback riding, camping, boating, bathing in a health spa, fishing, tennis.  
Visiting cultural and natural attractions, including Palm Sunday, the Pekel Cave or the Carthusian monastery in Žice.

**Accommodation**

3 Apartments  
(1 apartment for 3 people,  
2 apartments for 5 people)  
All apartments with shower/toilet.

**Email** sorzev.mlin.turist.kmetijal@netsi.net

The friendly Soržev Mlin (Mill) homestead is in the village of Polže, between the Hudinja River and the millcourse. The nearby 700-year-old watermill still turns grain into flour. The homestead also boasts a 'Venetian' sawmill with a huge paddle-wheel, which is occasionally still operated by the landlord. Visitors can purchase whole-grain flour made from rye, buckwheat and corn, and of course, taste the delicious home-baked bread. Alternatively, you may make your own meals from vegetables and fruit grown on the farm. The homestead is an ideal starting point for skiing at the Rogla ski centre and fishing on Šmartinsko Lake. In addition, a neighbor will be happy to take you for a ride on his hay cart or horse-drawn carriage.

**Location**

Vojnik, Nova cerkev

**Approach**

From Brnik airport (110 km away), follow the signs for Ljubljana onto the A2 motorway. Then in Ljubljana follow the signs for Maribor onto the A1 motorway. Leave the motorway near Celje following route 430 towards Vojnik. At Vojnik, follow signs for Višnja vas – Dobrna on route 429, and then turn right to Nova vas and Soržev mlin.

**Name of the Owner**

Sela pri Ratežu 15 · SI-8222 Otočec · Slovenia



The Šeruga homestead is surrounded by forests and a rippling stream. Once the location of a former mill, the Šeruga farm has thrown open its doors to all those in search of peace and quiet, unspoilt nature and delicious homemade dishes. The local area is well known for its domestic crafts and rich cultural heritage, and offers a host of opportunities for sporting activities in a pristine environment.

The Šeruga family will serve you traditional specialties made from organic vegetables and domestic meat. Guests can knead their own dough, catch their own trout in the nearby stream, or help landlord Slavko with the farm chores.

**Location**

Novo mesto, Sela pri ratežu

**Approach**

From Brnik airport (101 km from the farm), follow the signs for Ljubljana onto the A2 motorway. In Ljubljana, follow signs for Postojna onto the A1 motorway and then follow signs for Novo mesto and Zagreb onto the A2 motorway (E70). Go past Novo mesto on the A2, following the road as far as Dobrava (Mačkovec) where you should turn right across the river Krka on a local road as far as Šentpeter, then turn right to Dolenjaska vas and left to Sela pri Ratežu. Šeruga is signposted on the left.

**Annual closing**

Open all year

**Facilities | Activities**

Fishing, mushroom-picking, boating, river bathing, rafting, cycling. Visiting cultural and natural attractions, such as the Kostanjevica Cave, Kočevski Rog forest, the Cviček wine festival.

**Accommodation**

9 Bedrooms (8 double, 1 triple room)  
1 apartment for 2 people  
All rooms with shower/toilet and TV.

**Email** turist.kmetija.seruga@siol**Mr. Martin Zdolšek**

Okrog 16 · SI-3232 Ponikva · Slovenia

**Annual closing**

Open all year

**Facilities | Activities**

Horse-and-buggy rides, boating, skiing, horseback riding, bathing in health spa, mushroom-picking; Visiting cultural and natural attractions, such as the St. George's Day celebrations, Barbara's fair, the Slomšek homestead and Rifnik.

**Accommodation**

1 Double bedroom  
1 apartment for 6 people  
All accommodations with shower/toilet

**Email** mmzdolsek@excite.com

The Zdolšek homestead was built in 1824. In front of the homestead there is a huge garden, a fruit orchard and a gaily colored beehive attracting attention of every visitor. Nature-lovers might want to pick mushrooms and medicinal herbs or perhaps go fishing. Particularly interesting activities are available to children, who can learn about life on the farm and witness the making of domestic arts and crafts in neighbouring homes. Guests find it easy to relax in the peace and quiet of the Zdolšek country estate. Meanwhile, the family loves to pamper them with traditional dishes, as well as with wine from the home cellar.

**Location**

Šentjur pri Celju, Ponikva

**Approach**

From Brnik airport (149 km from the house), follow the signs for Ljubljana onto the A2 motorway. Then in Ljubljana follow the signs for Maribor onto the A1 motorway. Leave the motorway at Celje following signs for Laško, Zidani most and Radeče on route 5. Go through Radeče and turn right onto route 738 towards Tržišče, Brunk and Hotemaže. Drive on as far as Šentjanž, then turn right to Hinje. Drive to Podboršt and Veliki Cirknik, then turn right to Roženberk and then right towards Vrh. At Šentrupert turn left to Škrljevo, then left to Ravnik and left to Okrog at Zdolšek.

**Mr. Peter Brus**

Straža 8 · SI-5282 Cerkno · Slovenia



The Želinc homestead has stood in the village of Straža at the confluence of the Idrijca and Cerknica rivers for five centuries. The farm has always been known far and wide, and Straža is often called "At Želin's" by the locals. The surrounding area offers a variety of interesting places to visit. Bikes, parachutes and kayaking equipment can be hired at the homestead. A visit to the interesting museums in Idrija and Cerkno are fascinating alternatives on rainy days.

The landlady makes a variety of domestic delicacies for guests, such as a famous local dish known as 'Idrija žlikrofi' (ravioli with a special filling). Those with a sweet tooth will delight in the mouthwatering walnut rolls and cheese and apple strudel.

**Location**

Cerkno

**Approach**

From Brnik airport (55 km from the house), follow signs for Kranj. Near Kranj, turn left following signs for Škofja Loka on route 210. Go through Škofja Loka and continue on route 210 to Gorenja vas and Cerkno.

At Sovodnji turn left onto a local road towards Koprivnik, Jazne and Plužnje. At Lazec, turn right to Straža and Želinc is signposted on the right.

**Annual closing**

Open all year

**Facilities | Activities**

Fishing, hunting, cycling, skydiving, kayaking, hiking. Visiting cultural and natural attractions, including the Franja Partisan Hospital, Ravenska Cave, Divje Babe (site of the oldest pipe in Europe), the lace festival.

**Accommodation**

13 Bedrooms (6 single, 7 double)  
2 apartments for 4 people  
All rooms furnished with shower/toilet.

**Email** info@zelinc.com**Annual closing**

Open all year

**Facilities | Activities**

Well signed 'Heritage Trails', cycling, fishing and hunting, horse back riding (13 km), panoramic flights (15 km), rafting (25 km), wellness centre (25 km), 28 interesting locations of the Heritage Trails through Dolenjska and Bela krajina.

**Accommodation**

The use of the whole house with two rooms (3+1 beds), bathroom, sauna, kitchen, garden and barbecue area.

**Email** kompas.nm.matjaz@siol.com**Mr. Matjaž Pavlin**

Paha 3 · 8222 Otočec · Slovenia



This 150-year-old rural house has been lovingly restored and features furniture dating back more than a century, a baker's oven and a kitchen-range, a traditional cellar and a modern sauna. It is certainly charming for all lovers of tradition who would like to taste the lifestyle of our grandparents and maybe try to overnight in the hayrack in the summertime. All guests are welcomed with a loaf of bread, local "cviček" wine and home made sausage.

Guests can enjoy beautiful views of the Krka river valley and the nearby Otočec Castle. There is a possibility to rent a bicycle or one can simply take a walk around the wine-growing hills.

**Location**

Novo mesto, Paha

**Approach**

From Brnik airport (82 km from the farm), follow the signs for Ljubljana onto the A2 motorway. In Ljubljana follow signs for Novo mesto and Zagreb onto the A2 motorway [E70]. Go past Novo mesto on the A2, following the road as far as Otočec. Leave the road at Otočec and in the centre of the village, turn right and follow the sign to Paha. After the underpass turn right again and then stay on the main road for 3 km until you reach the village of Paha. The house is on the left side of the village.

## Family Marsič

Parecag 182 · 6333 Sečovlje · Slovenia



The Salt House (Salaro - Casa del Sal) is on a hillside of the Secovlje Salina Natural Park, where salt making still takes place. It is just 4km from lovely Piran, a Mediterranean town with medieval architecture and a rich cultural heritage, and 2 km from Croatian Istria. Salaro - Casa del Sal was the home of the salt pan workers from the 19th century. Today, it offers visitors accommodation, pampering them with traditional Istrian and Mediterranean dishes of their choice, made from vegetables and fruit grown at the house and served with a glass of homemade wine.

### Annual closing

Open all year

### Facilities | Activities

Sea fishing, scuba diving, cycling, strolling around the salt pans; Visiting cultural and natural attractions, such as the Mediterranean towns of Piran, Izola and Koper; the salt pan museum and maritime museum

### Accommodation

4 Bedrooms (1 double, 3 triple rooms)  
All rooms with bathroom

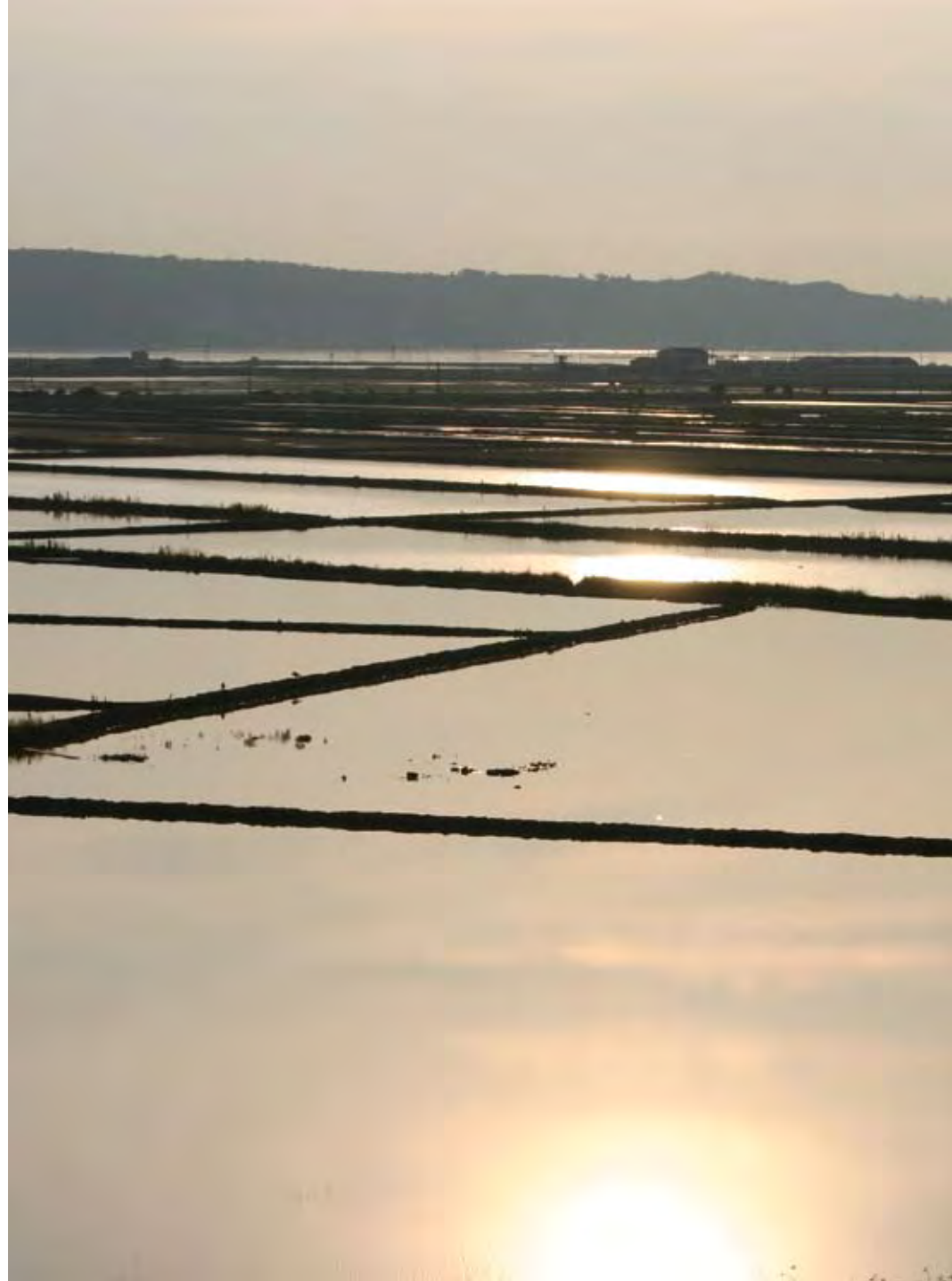
**Email** [info@casadelasal.net](mailto:info@casadelasal.net)

### Location

Piran, Sečovlje

### Approach

From Brnik airport (142 km from the house), follow signs for Ljubljana onto the A2 motorway. In Ljubljana, follow signs for Postojna and Koper onto the A1 motorway. After Koper, follow signs for Portorož and Sečovlje towards the Croatian border on route 111. Near Seča and Sečovlje, the salt pan is on the right; the house is signposted on the left, on a local road on the hill.





## *“Special places to stay”*

*The castles, the manor houses, the farm houses and the other houses of special value are usually surrounded by a beautiful garden or park where those who are longing to have a peaceful, however lasting holiday can find their wish. Thermal spas are all over in Vas County, furthermore there are possibilities to ride horses and bicycle, to fish or participate in a folklore program.*



Magyar Vendégváró Ódon Házak Egyesület has been founded with the propose of helping to save and renovate special and valuable old houses. These houses are residences of families, however traditional guest rooms have been equipped or they are under refurbishment. In many of the old houses, guests can taste the traditional Hungarian Cuisine, moreover can experience the famous Hungarian Hospitality.

The castles, the manor houses, the farm houses and the other houses of special value are usually surrounded by a beautiful garden or park where those who are longing to have a peaceful, and lasting holiday can find their wish. Thermal spas are all over in Vas County, furthermore there are possibilities to ride horses and bicycle, to fish or participate in a folklore program.

MAGYAR VENDÉGVÁRÓ  
ÓDON HÁZAK EGYESÜLET  
9600 Sárvár · Vad kert út 1  
HUNGARY  
Tel (+36) 309577871  
Tel (+36) 95 523 603  
Fax (+36) 95 523 603  
Email [sarvartours@hu.inter.net](mailto:sarvartours@hu.inter.net)

- 01 CASTLE OF SITKE in Stike
- 02 Ó EBERGÉNYI CASTLE in Vasszecsény
- 03 ÚJ EBERGÉNYI CASTLE in Vasszecsény
- 04 SIBRIK CASTLE in Bozsok
- 05 SÁGHEGY INN in Celldömölk
- 06 SZELESTEI CASTLE in Szeleste
- 07 MARÓTHY MANSION in Zsédény



**Kovács Ferencné**

9671-Sitke · József Attila street 1 · Hungary



The first written document where the name of this little village is mentioned dates back to 1251, however, Roman findings indicate an earlier origin. The castle of the Felsöbükki-Nagy family was erected on the hillside next to the village around 1730 originally with Baroque elements, which were later rebuilt in Romantic style. Its north-eastern side with a broken ground plan bears a balcony with a console. In front of the entrance a statue of Christ can be found, erected on the command of Franciska Felsöbükki-Nagy 1734. In the socialist era it has long served as a school, until two families with a spirit for enterprise took up the task to renovate it 1982. One year later it is already a castle hotel. It is a real familiar place, where the owner's keenness on collecting antiquities provides the guests many-many surprises.

**Location**

The Sitke Castle is located in Sitke, Vas County. The hotel is located only 6 km from Sárvár.

**Approach**

The castle can be reached by car and by bus from the road 84. The nearest railway station is in Sárvár.

**Annual closing**

Open all the year round  
Contact (+ 36) 95 572 000

**Facilities | Activities**

Mini-golf, badminton court, indoor and outdoor swimming-pool, chickenrun, sauna, solarium and conference rooms. Traditional Hungarian pig-killing ceremonies and barbecue parties can be organized.

**Accommodation**

In the castle are 20 rooms, for 48 persons. 1 apartment for 4 people. All rooms with shower/toilet.

Email [kfsitke@hu.inter.net](mailto:kfsitke@hu.inter.net)

**Futó Orsolya**

9763 Vasszeccseny · Ebergényi street 10 · Hungary

**Annual closing**

Open all the year round  
Contact (+ 36) 94 377 944

**Facilities | Activities**

Open terrace, swimming pool, children's playground with a small pool, billiard, table-tennis, volleyball, bar, restaurant and Banquet Hall.

**Accommodation**

Twelve rooms for 40 persons. Our guest may choose among double bedrooms with bathroom or apartments of two or three rooms, each suitable for 2 people.

Email [postmaster@pontus.t-online.hu](mailto:postmaster@pontus.t-online.hu)



The Castle belonged to the ancient family residence of Baron Ebergényi. The Castle Hotel is located along the route 87, 15 km from Szombathely, in south-eastern direction. It has been built in original Hungarian Baroque style in 1721, on the foundation of a fortress built in the sixteenth century. The Castle is protected as a monument ranked „A”. You can find here the most beautiful restored banquet hall of Western Hungary. The Castle lies in the centre of a 1.4 acre ancient, well-kept park; it is bordered by the Gyongyos stream and by the original castle ditch. This ensures you undisturbed peaceful recreation in a well-kept environment.

**Location**

The house is located in the middle of the romantic wilderness just a few kilometres away from Szombathely.

**Approach**

15 km from Szombathely, in south-eastern direction along the road 87

**Pammer István**

9763 Vasszécsény · Kossuth Lajos street 36 · Hungary



Új-Ebergényi in Vasszécsény, built in late-Baroque style, is one of Hungary's most beautiful mansions. The marble assembly room along with meeting rooms downstairs and upstairs are elegant and ideal venues for services like: trainings, conferences, business and team-building meetings, banquets, buffets, cocktail-parties, weddings etc. Our restaurant and winery serves the county's most excellent meals and drinks. If you are fond of sports our virgin park of 26 acres gives room for two tennis courts a volleyball court and several playgrounds. We offer reasonable prices, high quality services and warm hospitality for those who choose to spend their time of recreation at our mansion.

**Annual closing**

Open all the year round  
Contact (+ 36) 94 377 023

**Facilities | Activities**

Horse riding, cycling tours, country trips, concerts and programs with characteristic Hungarian meals, swimming pool, sauna and solarium.

**Accommodation**

There are 20 double bedrooms and 2 triple bedrooms provide accommodation for 46 people at one time.

Email [pammer.istvan@kastelyszallo.hu](mailto:pammer.istvan@kastelyszallo.hu)

**Location**

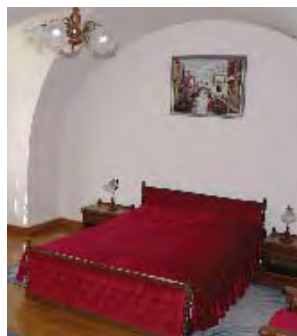
The house is located in the middle of the romantic wilderness just a few kilometres away from Szombathely.

**Approach**

It is situated 13 km from Szombathely, on road 87.

**Hendéné Fekete Piroska**

Castlehotel · 9727 Bozsok · Rákóczi street 1 · Hungary

**Annual closing**

Open all the year round  
Contact (+ 36) 94 360 960

**Facilities | Activities**

Public green-room with TV, billiards, sauna, tennis court, breakfast and lunch-room, separate room, conference room.

**Accommodation**

There are 12 rooms (4 double rooms, 7 threebed-rooms, 1 fourbed-room - family room) in familiar atmosphere in the castle. All the rooms are with private facilities (without TV in the rooms).



The Irottkő Nature Reserve in the Kőszegi hillock is direct at the Hungarian-Austrian border. One of its beloved and famous excursion places is Bozsok.

You can find here the Sibrik Castle in the middle of a beautiful 4 acre park. Kőszeghegyalja is famous for its crystal clear fresh air, that is competent to heal breathing diseases.

There are a great number of trip opportunities, tourroutes, pleasure-resorts, spas in the neighbourhood.

**Location**

It is located 10 km from Szombathely, in the small village of Bozsok.

**Approach**

10 kms from the road fork by Lukácsbáza on the Szombathely - Kőszeg road number 87

8 kms far from the road fork by Bucsú on the Szombathely - Bucsú road number 89

**Szita Antal**

9500 Celldömölk · Ság Hill street · Hungary



The guesthouse was established and built in 1911 by thown-er of the mine, equipped in the crater of a volcano. It has been working for 50 years.

We have six rooms equipped with 100 year-old furniture. The house is like a little castle with a fancy restaurant and a big cellar, in which infra-sauna and jacuzzi can be found. The environment is beautiful, the Inn is on the top of the Ság Hill, which is a National Reserve, so the air is clean, there are lots of protected plants and animals. You can always hear the birds singing. There are two positiv energy lines on the hill, they can heal all the diseases.

**Location**

The house is located in Kemenesalja, 20 km from Sárovar, 80 km from Lake Balaton, 200km from Budapest

**Approach**

The house can be reached by car or by bus from the road 8.

**Halász Ferenc**

9622-Szeleste · Arany J. street · Hungary

**Annual closing**

Open all the year round  
Contact (+ 36) 95 565 001

**Facilities | Activities**

Services in suites, rooms, in outdoor and indoor thermal basins, dentist, massage, sauna, solarium, fitness room, bicycle rent, playground, restaurant, bar and conference room for 40-250 persons, training courses, business opportunities, weddings etc.

**Accommodation**

In the castle are 13 rooms, in the Hotel Suzanne are 14 rooms, for 85 persons.

Email [info@szelesteikastely.hu](mailto:info@szelesteikastely.hu)



The 150-year-old Festetich Palace is one of the most beautiful monuments of a Transdanubian charming village, Szeleste in Vas County. This castle was built in romantic style and is situated within an arboretum of 5.47 acres (13.5 ha) with own thermal bath and is surrounded by little serpentine paths. Hotel Suzanne (Zsuzsanna) - that belongs to Castle Festetich - offers the guests indoor pool with thermal water, massage pool and outdoor pool to make their holiday an unforgettable experience.

Our thermal water is supplied by a 60° C thermal sprung out of 1260 m depth, which is excellent for locomotor disorders, pre- and post-treatment of joint operation, post-treatments, rheumatic diseases, several skin diseases and disorders of the cardiovascular system.

The room price includes the entrance fee of the bath.

**Location**

The Festetich Palace is located in Szeleste, Vas County, on the main road 86. The hotel is located only 15,5 miles (25km) from Szombathely and 8,7 miles (14km) from Sárovar.

**Approach**

It is situated 15 km from Szombathely, on the main road No.86.

**Vörös István**

9635-Zsédény · Rákóczi street 31 · Hungary



The settlement Zsédény in Vas county in Hungary, with its about 250 inhabitants, is situated at the 74th kilometre stone on road 84 leading to Balaton. The romantic mansion of the Káldy – Maróthy family was renovated by the art expert Fiedler family. Although the former mansion doomed to perish, nowadays offers the peace of the Vas countryside to tourists. The mansion was built in the 19th century in a Romantic-Eclectic style endowed with period furniture. At a distance of 10 kilometres each, we can find Bükfürdő and Sárvár spas, both of them well known for their curative thermal water. Its ancient, well-kept arboretum park lying on a surface of 20.000 square meters represents an ideal place for those who wish to recreate, to have peace and silence but it also offers the possibility of organising open air performances, concerts and garden parties. The rooms are all endowed with period furniture and furnishings that are characteristic to the Romantic-Eclectic lifestyle and way of life.

**Location**

The house is located in a park of 20 000 m<sup>2</sup>, 12 km from Sárvár.

**Approach**

It is situated at the 74th kilometre stone on road 84 leading to Balaton.

**Annual closing**

Open all the year round  
Contact (+ 36) 95 343 031

**Facilities | Activities**

hunter-room, billiard, pool, table-tennis, fishing, horse-riding, hunting.

**Accommodation**

There are in the mansion restaurant and a accommodation with 10 apartment for 2 and 2 apartment for 4 persons, equipped with period furniture, bath, TV and freezer.

**Email** marothykuria@freemail.hu





To answer expectations in the best possible way, please fill this form and send it to us:

EUROPE OF TRADITIONS • CENTER • Praça da República • 4990-062 Ponte de Lima • Portugal;  
Fax (+351) 258 931320 • Email info@europetraditions.com

Name

Address (if you want an answer)

Country

Email

Where did you stay  Date

- Did you book:
- ☐ Directly
  - ☐ Through the website
  - ☐ Through a Travel Agency
  - ☐ Through the owner Association

How did you learn about **Europe of Traditions** and why you chose us?

Did **Europe of Traditions** answer your expectations? ☐ Yes  
☐ No

- If not, why?
- ☐ Welcome?
  - ☐ Comfort?
  - ☐ Cooking?

Other comments:



Please fill this form and send it to:

EUROPE OF TRADITIONS • CENTER • Praça da República • 4990-062 Ponte de Lima • Portugal;  
Fax (+351) 258 931320 • Email info@europetraditions.com

Name

Address

Zip code  Town  Country

Email

I would like to get  copy(s) of **Europe of Traditions Accommodation Guide**.

Date  Signature



Association in cooperation  
with Europe of Traditions  
[www.fazendasdobrasil.com](http://www.fazendasdobrasil.com)

[www.europetraditions.com](http://www.europetraditions.com)

*Europa Traditionae Consortium  
is a consortium of six organisa-  
tions running for ten years, offer-  
ing a personal style of hospitality  
in homes of character.*

*All are interested in preserving  
and helping their customers to  
enjoy the heritage and culture of  
their country and their region,  
whether this is reflected in the  
architecture or food and wine.  
With the Eurotrad Project the Eu-  
rope of Traditions will be enlarged  
to ten European Associations.*

*The four new members are:  
Casas Grandes de Hispania from  
Spain, Case della Tradizione  
from Italy, Tradition Österreich  
from Austria and Magyar  
Vendégház Ódon Házak  
Egyesület from Hungary.*



*Solares de Portugal*

#### PORTUGAL

SOLARES DE PORTUGAL  
Praça da República - 4990-062 Ponte de Lima  
**Tel** (+351) 258 741672 · **Fax** (+351) 258 741444  
**Email** [info@turihab.pt](mailto:info@turihab.pt)  
[www.solaresdeportugal.pt](http://www.solaresdeportugal.pt)

#### IRELAND

THE HIDDEN IRELAND  
PO Box 31, Westport · Co Mayo · IRELAND  
**Tel** (+353) 98 66650 / 1 662 7166  
**Fax** (+353) 98 66651 / 1 662 7144  
**Email** [info@hiddenireland.com](mailto:info@hiddenireland.com)  
[www.hiddenireland.com](http://www.hiddenireland.com)

#### FRANCE

CHÂTEAU ACCUEIL  
Château de Garrevaques  
81700 Garrevaques · FRANCE  
**Tel** (+33) 5 63750454 · **Fax** (+33) 5 63702644  
**Email** [m.c.combes@wanadoo.fr](mailto:m.c.combes@wanadoo.fr)  
[www.chateau-accueil.com](http://www.chateau-accueil.com)

#### UNITED KINGDOM

WOLSEY LODGES  
9, Market Place, Hadleigh  
Ipswich, Suffolk IP7 5DL · UNITED KINGDOM  
**Tel** (+44 1 473) 822 058 · **Fax** (+44 1 473) 827 444  
**Email** [wolsey@wolseylo.demon.co.uk](mailto:wolsey@wolseylo.demon.co.uk)  
[www.wolsey-lodges.co.uk](http://www.wolsey-lodges.co.uk)

#### NEDERLAND

ERFGOED LOGIES  
Apollolaan 133-135  
1077 AR Amsterdam · NEDERLAND  
**Tel** (+31) 20 - 47 05 085 · **Fax** (+31) 20 - 47 00 978  
**Email** [info@erfgoedlogies.nl](mailto:info@erfgoedlogies.nl)  
[www.erfgoedlogies.nl](http://www.erfgoedlogies.nl)

#### SLOVENIA

HIŠE S TRADICIJO  
Mala ulica 8 · SI-1000 Ljubljana · SLOVENIA  
**Tel** (+386) 1 434 2660 · **Fax** (+386) 1 434 26 64  
**Email** [info@hisestradicijo.com](mailto:info@hisestradicijo.com)  
[www.hisestradicijo.com](http://www.hisestradicijo.com)



## **SOLARES DE PORTUGAL - HEAD OFFICE**

Praça da República · 4990-062 Ponte de Lima

**Tel** (+351) 258 741672 · **Fax** (+351) 258 741444

**Email** info@turihab.pt

www.solaresdeportugal.pt



*Solares de Portugal*

## **CASAS GRANDES DE HISPANIA**

Monte Bachao, s/n · Santa Cristina de Fecha

15898 Santiago de Compostela · SPAIN

**Tel** (+34) 981 194 118 · **Fax** (+34) 981 19 20 28

**Email** info@pazosdegalicia.com



## **CASE DELLA TRADIZIONE**

Castello Savorgnan di Brazzà

33030 S. Margherita · Udine · ITALY

**Tel\Fax** (+39) 0432 672268

**Email** info@casedellatradizione.it



## **TRADITION ÖSTERREICH**

Schlossgasthof Rosenberg

A-3573 Rosenberg 2 · AUSTRIA

**Tel\Fax** (+43) 0 29 82 30 577

**Email** schlossgasthof-rosenburg@wvnet.at



## **HİŞE S TRADICIJO**

Mala ulica 8 · 1000 Ljubljana · SLOVENIA

**Tel** (+386) 1 434 2660 · **Fax** (+386) 1 434 2464

**Email** info@hisestradicijo.com

www.hisestradicijo.com



HİŞE S TRADICIJO

## **MAGYAR VENDÉGVÁRÓ**

### **ÓDON HÁZAK EGYESÜLET**

9600 Sárovar · Vad kert út 1 · HUNGARY

**Tel** (+36) 309577871 · **Fax** (+36) 95 523 603

**Email** sarvartours@hu.inter.net



*www.europetraditions.eu*



PROJECT PART-FINANCED  
BY THE EUROPEAN UNION



The Hidden Ireland is a unique collection of historic private houses which offer stylish accommodation and great Irish hospitality – at an affordable price.

These houses are not hotels and they're very much more than ordinary guesthouses. They offer a rare opportunity to experience the lifestyle of a bygone age and to meet extraordinary people in delightful circumstances.

Most of the houses are Georgian country houses from the 18th or 19th centuries, many of major architectural importance, many with glorious antiques or artwork and many surrounded by great estates. Others are equally fine town houses from the same era.

All the country houses offer splendid dinners and delicious breakfasts, while some of the town houses offer breakfast only, but with nice restaurants nearby.

The whole purpose of The Hidden Ireland is to provide a special and fascinating alternative to conventional tourist accommodation. The wonderful atmosphere of these houses and the personal attention of your owner-hosts make the whole experience profoundly rewarding.

To relax completely and to absorb the full character and context of these special places, it is strongly recommended that you stay for at least two or three nights in each house.



*"Special places to stay"*

*The Hidden Ireland provides a real and interesting alternative to conventional tourist accommodation, with plenty of activities for all, or tranquil havens for those in need of a restful break. For the sportsman there is access to the very best hunting, shooting and fishing in the country.*



**THE HIDDEN IRELAND**  
123 Lower Baggot Street  
Dublin 2 · IRELAND  
Tel (+353) 1 6627166  
Fax (+353) 1 6627144  
E-mail: [info@hidden-ireland.com](mailto:info@hidden-ireland.com)  
<http://www.hidden-ireland.com>

- |                      |                      |
|----------------------|----------------------|
| 01 Ashley Park House | 18 Hollywell         |
| 02 Ballinderry Park  | 19 Kilmokea          |
| 03 Ballinkeele House | 20 Lismacue House    |
| 04 Ballyvolane House | 21 Lorum Old Rectory |
| 05 Castlecoote House | 22 Marlagh Lodge     |
| 06 Clonalis House    | 23 Martinstown       |
| 07 Clone House       | 24 Mobarnane House   |
| 08 Coolclogher House | 25 Mornington        |
| 09 Creagh House      | 26 Mount Vernon      |
| 10 Delphi Lodge      | 27 Number 31         |
| 11 Emlaghmore Lodge  | 28 The Quay House    |
| 12 Enniscoe House    | 29 Rossnaree         |
| 13 Farran House      | 30 Roundwood House   |
| 14 Frewin            | 31 Sallyport House   |
| 15 Glanleam          | 32 Temple House      |
| 16 Glenview House    | 33 Tyrella House     |
| 17 Hilton Park       | 34 Woodbrook House   |



*"Special places to stay"*

'Château Accueil' is pleased to present you a special selection of Châteaux and Manor Houses throughout France. For over 20 years we have chosen properties with a long tradition of welcoming guests into their homes as friends.

If you long to experience the decadence of 'Louis' Style' rooms or the medieval atmosphere of a moated castle but don't wish to sacrifice modern day comforts, then Château Accueil is the perfect compromise. All our properties have been carefully and sympathetically restored so that you can enjoy your stay in comfort whilst still savouring the unique charm of each Château.

Choosing 'Château Accueil' to travel through France, will enable you to share our art of living, our culture and our inheritance. It will also present you with the ideal opportunity to enjoy the richness of some unknown places that are not on the normal tourist routes.

Our members will be only too happy to advise you on how to make the best of your itinerary or provide you with useful local addresses. During your stay, you will find the conversation, the different points of view regarding culture and other matters to be stimulating and interesting.

The hospitality provided and the assured dependability of our members have created many lasting relationships over the past number of years. It is with this knowledge that we welcome you to 'Château Accueil' where you can be assured of a truly memorable stay.

*A unique collection of privately owned Châteaux throughout the length and breadth of France.*

*From the famous wine producing areas of Burgundy and Bordeaux to the historic regions of Normandy and Brittany; from the sunny Mediterranean Coast to the mountainous Alps, you will find a warm welcome awaits you.*



**CHÂTEAU ACCUEIL**

Château de Garrevaques

81700 Garrevaques - France

**Tel** (+33) 5 63750454

**Fax** (+33) 5 63702644

**E-mail** m.c.combes@wanadoo.fr

<http://www.chateau-accueil.com>

- |                                  |                                 |
|----------------------------------|---------------------------------|
| 01 Château de Guilguiffin        | 19 Château de Boussac           |
| 02 Château du Plessis-Atlantique | 20 Château de la Tillade        |
| 03 Château de Colombières        | 21 Château Lamothe              |
| 04 Château de Boucéel            | 22 Château Saint-Aignan         |
| 05 Château des Blosses           | 23 Château de la Borie-Saulnier |
| 06 Château de Beauvoir           | 24 Château de Brie              |
| 07 Château de Dramard            | 25 Château de la Poujade        |
| 08 Prieuré de Saint-Michel       | 26 Château de la Bourgonie      |
| 09 Château de Saint-Paterne      | 27 Château d'Arbieu             |
| 10 Château de Vaulogé            | 28 Château de Villemenant       |
| 11 Château de Beauchamps         | 29 Château de Flée              |
| 12 Château du Plessis            | 30 Domaine de Loisy             |
| 13 Château des Briottières       | 31 Château de Longecourt        |
| 14 Château de Verrières          | 32 Château de Longsard          |
| 15 Le "Château"                  | 33 Château de Grézan            |
| 16 Château de la Rue             | 34 Château de Garrevaques       |
| 17 Château de Colliers           | 35 Château de Belcaire          |
| 18 Château de Jallanges          |                                 |



*"Special places to stay"*

Erfgoed Logies is a consortium of privately owned homes. These pleasant homes, often of historic interest, include manor houses, mansions, country rectories and lovely-restored cottages.

Guests are made welcome as friends and entertained as family. They will often dine with their hosts, as well as with any other guests may be staying.

Erfgoed Logies vary from quite grand country houses to more modest homes. At some you will enjoy antique furniture, fine pictures and portraits, beautiful silver and glass. Others offer more informal information.

Erfgoed Logies provides a real and interesting alternative to conventional tourist accommodation with plenty of activities for all, or tranquil havens for those in need of a restful break.

*All family hotels and all the other delightful accommodations are located in historical heritage. Except a mill and a vicarage or a church, you will find a selection of castles, manors, estates and old farmhouses. Some houses are on small scale. Others are big enough to spend the weekend with the entire family. You will absolutely find what you are looking for.*



## ERFgoed LOGIES NEDERLAND

Apollolaan 133-135  
1077 AR Amsterdam  
Tel (+31)20 - 67 97 441  
Fax (+31)20 - 47 00 978  
E-mail info@erfgoedlogies.nl  
www.erfgoedlogies.nl

## DRENTE

- 01 Chambres-del-Campo
- 02 De Nijenshof
- 03 Het Buytenhof
- 04 Het Heerenhuys
- 05 Huis Ter Hansouwe
- 06 Huize 'Ronde Blesse'
- 07 Huize te Lieveren
- 08 Hunebed & Breakfast
- 09 Kamer 7
- 10 Kunsthuis Interlokaal
- 11 Landgoed Hessum
- 12 Landgoed Overcinge
- 13 'T Olde Hof

## FRIESLAND

- 14 B&B Gastenkamer Eewal
- 15 D' Oude Herbergh
- 16 De Bloemerstee
- 17 De Oerterper  
Gastenkeamers
- 18 Groot Kahool
- 19 Herberg de Waard  
Van Ternaard
- 20 Het Thomasma Huys
- 21 Klipper Grote Beer
- 22 Landschapshof
- 23 Linde Zathe
- 24 Logeerdierij Groote  
Medwerd
- 25 Noarder Pleats
- 26 Piaam State
- 27 Swettestate

## GELDERLAND

- 28 Hallenboerderij  
Groote Engel
- 29 Het Oude Postkantoor
- 30 Het Paradijs in Kerkwijk
- 31 Hotel de Tolkamer
- 32 Kasteel Huize Vorden
- 33 Landgoed Vriezenhuis
- 34 Spaensweerd

## GRONINGEN

- 35 Boerderij Rikkerda
- 36 Boerderij Blokzijl
- 37 Boerderij Hermans

## DIJKSTRA

- 38 De Amshoff
- 39 De Gastheerd
- 40 De Lindenhoff
- 41 De Oude Pastorie
- 42 De Vesting
- 43 Fleremaheerd
- 44 Herberg in de Valk
- 45 hereboerderij zuidpool
- 46 Het Molenhuis  
'Onder de Kastanjes'
- 47 Het Schathoes  
Verhildersum
- 48 Huys te Dame
- 49 Landgoed Oudebosch
- 50 Landhuis Oosterhouw
- 51 Molen Hunsingo
- 52 Nieuw-Midhuizen
- 53 Schathuis  
'Wijtwerder Heerd'
- 54 De Piloersemaaborg
- 55 Wapen Van Noordbroek

## LIMBURG

- 56 De Gevekerhof
- 57 Het Schepenhuis
- 58 Hoeve Hazendries
- 59 Hotel de Traverse
- 60 Huis Nederhoven
- 61 Huis Broeckmeulen

## NOORD-BRABANT

- 62 B&B 'Aan de Singelgracht'
- 63 Boerenkamer  
de Hagelaar
- 64 De Biekorf
- 65 Kasteel Maxburg

## NOORD-HOLLAND

- 66 De Prinsenkamer
- 67 Hans Brinker Logies
- 68 Het Raadhuis
- 69 Hof Van Marken
- 70 Museumschip Courier
- 71 Park Tower Suite
- 72 Sunhead of 1617

## OVERRIJSSEL

- 73 Bloksijliger  
Sluiswachterswoning
- 74 Droste's  
Boederijlodges
- 75 Erfgoed Bossem
- 76 Erve 'Agter Den Esch'
- 77 Gastenboerderij  
Spijkvoorde
- 78 Hoeve de Haar
- 79 Huis Nieuw Rande

## UTRECHT

- 80 Chambres-en-Ville

## ZEELAND

- 81 Bellas Artes
- 82 Hoeve de Appelgaard  
& de Orangerie
- 83 Landgoed Rijckholt
- 84 Restaurant Hotel de  
Gouden Leeuw
- 85 Villa Magnolia

## ZUID-HOLLAND

- 86 Hof Van Holland
- 87 Pakhuis Handelslust
- 88 Stadslogement  
Residenz
- 89 Het Vissershuisje



*"Special places to stay"*

Roses of Germany is the brand name of Castles and Houses of Tradition, a non-profit organisation established in 2001 with support from the Europe of Traditions Consortium, the Free State of Bavaria and the European Union. Roses of Germany offers private quality accommodation in houses of character which includes fortified and non-fortified castles, manor houses and other fine historic buildings. Some of our houses date back to the Middle Ages, with others built in the 17th and 18th centuries. Their architecture reflects distinct chapters in the history of Bavaria and Germany.

Because of its outstanding natural beauty, Bavaria is Germany's foremost tourist area. The capital is Munich, world famous for its Oktoberfest. Bavaria is also one of the economic powerhouses of Europe and a centre of electrical, electronics, automotive and bio-technical industries. Northern Bavaria comprises Lower, Upper and Central Franconia and the Upper Palatinate, with historical and cultural centres such as Wuerzburg, Bamberg, Nürnberg and Regensburg, not to forget Bayreut and its Wagner Festivals, and the royal town and castle of Coburg, the cradle of many European dynasties.



#### ROSES OF GERMANY

Castles and Houses of Tradition  
c/o Die Schenkenau · Schenkenau 1  
D-96147 Itzgrund · Germany

**Tel** (+49) 9533-8023

**Fax** (+49) 9533-731

**Email** office@roses-of-germany.com

**Email** schenkenau@vr-web.de

www.roses-of-germany.com

- 01 Sommersdorf Castle
- 02 Lanhotel Buttenheim Castle
- 03 Schenkenau Castle
- 04 Unterleiterbach Castle
- 05 Oberaufsess Castle
- 06 Unteraufsess Castle



*"Special places to stay"*

Wolsey Lodges is a collection of private homes, where the standard of hospitality, the location and the individuality of each house and host, has earned its unique place within the market today. The name Wolsey Lodge recalls Henry VIII's Lord Chancellor, Cardinal Wolsey. When he toured the realm in the 16th century, he expected to receive generous hospitality at any suitable country house along his way. This is the service and quality our lodges will want to offer you, wherever you travel within the UK or Europe.

Guests are entertained as family and friends. The experience of a home cooked meal in a friendly dinner party atmosphere in many of the great Wolsey Lodge dining rooms is one that can't be missed. You may also have the companionship of other guests and in some houses the hosts will dine with you. Not all Wolsey Lodges provide an evening meal but the hosts will be very happy to advise you on where to eat in the area and will usually be able to make a table reservation for you if required.

Wolsey Lodges vary from very grand country houses, Elizabethan manor houses, Georgian mansions, Victorian country rectories, to lovingly restored cottages. Each have their individual attributes and features, whether it is the history, the location, the surroundings or the food. Most importantly, all Wolsey Lodge hosts invite you into their homes because they want to share them with you. They are all dedicated to making your stay as enjoyable as possible.

*Wolsey Lodges Ltd. is a non profit making organisation owned by the members of the group. The Company was founded in 1981 by the East Anglia Tourist Board with thirteen homes. Membership rapidly expanded and today there are 169 members throughout Britain and 12 in continental Europe.*



**WOLSEY LODGES**

**WOLSEY LODGES**  
9 Market Place · Hadleigh · Ipswich  
Suffolk IP7 5DL  
**Tel** (+44)1473 822058  
**Fax** (+44)1473 827444  
**E-mail** info@wolseylodges.com  
www.wolseylodges.com

#### NORTHERN SCOTLAND

- 01 Braelangwell House
- 02 Brough House
- 03 Crolinne
- 04 Cuil-an-duin
- 05 Dinnet House
- 06 Geddes House
- 07 Kinlochfollart
- 08 Lochside Cottage
- 09 Lynturk Home Farm
- 10 Over Kinfauns

#### CENTRAL & SOUTHERN SCOTLAND

- 11 Murrayfield Gardens
- 12 Northumberland Street
- 13 Abbey Mains
- 14 Applegarth House
- 15 Blacketlees
- 16 Bridge of Awe Lodge
- 17 Cambo House
- 18 Corranmor House
- 19 Cosses Country House
- 20 Cumledge Mill House
- 21 Elibank
- 22 Glencorse House
- 23 Gorno Grove House
- 24 Greenhead Farm
- 25 Heughmill
- 26 Kirkton Barns
- 27 Langside Farm

- 28 Mackeanston House
- 29 Newtonmill House
- 30 Old Kippenross
- 31 Prestonhall
- 32 Sithe Mor House
- 33 Skirling House
- 34 Speddoch
- 35 The Firs
- 36 Tullibole Castle
- 37 Victoria Lodge
- 38 Whitehouse
- 39 Windmill House

#### ENGLAND'S

##### NORTH COUNTRY

- 40 Allerwash Farmhouse
- 41 Barnby Moor Hall
- 42 Boltongate Old Rectory
- 43 Brantingham Hall
- 44 Busby Hall
- 45 Cinder Hill
- 46 Coldbeck House
- 47 Dowthorpe Hall
- 48 Drybeck Hall
- 49 Eshott Hall
- 50 Lawrence House
- 51 Low Hall
- 52 Manfield Grange
- 53 Newburgh House
- 54 Scandale Brow
- 55 Sirelands

- 56 Spital Hill
- 57 St Mary's Mount
- 58 The Bower
- 59 The Manor House
- 60 The Old Rectory
- 61 Thurst House Farm
- 62 Tuggal Hall

#### ENGLISH SHIRES

- 63 Barleyford
- 64 Brills Farm
- 65 East Bridgford Hill
- 66 Higher Huxley Hall
- 67 Horseshoe Cottage
- 68 Oldfield House
- 69 The Barn
- 70 The Citadel,
- 71 The Old Rectory
- 72 The Old Vicarage
- 73 The Summer House
- 74 The Wilderness

#### WALES

- 75 Coedllys Uchaf
- 76 Cotham Lodge
- 77 Golden Grove
- 78 Maesmor Hall
- 79 The Old Rectory
- 80 The Old Vicarage
- 81 Ty'r Chanter

## CENTRAL ENGLAND

- 82 Barton House  
83 Beryl  
84 Bratton Farmhouse  
85 Buttermilk Stud  
86 Colledges House  
87 Drakestone House  
88 Hall End  
89 Holmby House  
90 Home Farmhouse  
91 Hovington House  
92 Idover House  
93 Lower Farm House  
94 Manor Farm House  
95 Pitfour House  
96 Priory Steps  
97 Rectory Farm  
98 Rectory Farm House  
99 Salford Farm House  
100 The Great House  
101 The Grove  
102 The Old Manor House  
103 The Old Rectory  
104 The Old Vicarage  
105 The Old Windmill  
106 Uplands House  
107 Upper Buckton  
108 Westward  
109 Winstone Glebe

## EAST OF ENGLAND

- 110 Bank House  
111 Beeholme House  
112 Church Farm House  
113 Grove Farm  
114 Haughley House  
115 Lavenham Priory  
116 The Old Rectory  
117 Toneham House  
118 Westoe Farm  
119 White House Farm  
120 Willow Farm  
121 Yew Tree House

## THE WEST COUNTRY

- 122 Anchorage House  
123 Byleat  
124 Cokesputt House  
125 Crugsillick Manor  
126 Emmett's Grange  
127 Gate House  
128 Landewednack House  
129 Lavethan  
130 Quither Mill  
131 Rowhorne House  
132 The Old Rectory  
133 The Parsonage  
134 Tregoose  
135 Tremayne House  
136 The West Wing  
137 West Bradley

- 138 West Farm  
139 Woodhayes

## SOUTHERN ENGLAND

- 140 Church Farm  
141 How Park Farm  
142 Huish Manor  
143 Merlin House  
144 The Manor House  
145 The Old Manor  
146 The Old Rectory  
147 Tudor Lodge  
148 Upper House  
149 Woodford Mill

## SOUTH EAST ENGLAND

- 150 Great Weddington  
151 Holly Hall  
152 Lywood House  
153 Morphews  
154 Old Whyly  
155 Old Moat House  
156 Stable Court  
157 40 York Road

## LONDON AREA

- 158 113 Pepys Road  
159 79 Greencroft Gardens  
160 8 Macaulay Road  
161 Lambourn  
162 Spindrift



HEAD OFFICE  
**SOLARES DE PORTUGAL**  
Praça da República  
4990-062 Ponte de Lima  
**Tel** (+351) 258 741672  
**Fax** (+351) 258 741444  
**Email** info@turihab.pt  
www.solaresdeportugal.pt



**CASAS GRANDES DE HISPANIA**  
Monte Bachao, s/n  
Santa Cristina de Fecha  
15898 Santiago de Compostela  
**Tel** (+34) 981 194 118  
**Fax** (+34) 981 19 20 28  
**Email** info@pazosdegalicia.com



**CASE DELLA TRADIZIONE**  
Castello Savorgnan di Brazza  
33030 S. Margherita  
Udine · ITALY  
**Tel\Fax** (+39) 0432 672268  
**Email** info@casedellatradizione.it



**TRADITION ÖSTERREICH**  
Schlossgasthof Rosenberg  
A-3573 Rosenberg 2 · AUSTRIA  
**Tel\Fax** (+43) 0 29 82 30 577  
schlossgasthof-rosenburg@wvnet.at



**HIŠE S TRADICIJO**  
Mala ulica 8  
1000 Ljubljana · SLOVENIA  
**Tel** (+386) 1 434 2660  
**Fax** (+386) 1 434 2464  
**Email** info@hisestradicijo.com  
www.hisestradicijo.com



**MAGYAR VENDÉGHÁZAK**  
**ÓDON HÁZAK EGYESÜLET**  
9600 Sárovar  
Vad kert út 1 · HUNGARY  
**Tel** (+36) 309577871  
**Fax** (+36) 95 523 603  
**Email** sarvartours@hu.inter.net



**THE HIDDEN IRELAND**  
PO Box 31, Westport  
Co Mayo · IRELAND  
**Tel** (+353) 98 66650 / 1 662 7166  
**Fax** (+353) 98 66651 / 1 662 7144  
**Email** info@hiddenireland.com  
www.hiddenireland.com



**CHÂTEAU ACCUEIL**  
Château de Garrevaques  
81700 Garrevaques · FRANCE  
**Tel** (+33) 5 63750454  
**Fax** (+33) 5 63702644  
**Email** m.c.combes@wanadoo.fr  
www.chateau-accueil.com



**ERFGOED LOGIES**  
Apollolaan 133-135  
1077 AR Amsterdam · NEDERLAND  
**Tel** (+31) 20 - 47 05 085  
**Fax** (+31) 20 - 47 00 978  
**Email** info@erfgoedlogies.nl  
www.erfgoedlogies.nl



**WOLSEY LODGES**  
9, Market Place, Hadleigh  
Ipswich, Suffolk IP7 5DL  
UNITED KINGDOM  
**Tel** (+44 1 473) 822 058  
**Fax** (+44 1 473) 827 444  
**Email** wolsey@wolseylo.demon.co.uk  
www.wolsey-lodges.co.uk



**ROSES OF GERMANY**  
Castles and Houses of Tradition  
c/o Die Schenkenau · Schenkenau 1  
D-96147 Itzgrund · GERMANY  
**Tel** (+49) 9533-8023 · **Fax** (+49) 9533-731  
**Email** office@roses-of-germany.com  
**Email** schenkenau@v-r-web.de  
www.roses-of-germany.com

[www.europetraditions.com](http://www.europetraditions.com)



To answer expectations in the best possible way, please fill this form and send it to us:

EUROPE OF TRADITIONS • CENTER • Praça da República • 4990-062 Ponte de Lima • Portugal;  
Fax (+351) 258 931320 • Email info@europetraditions.com

Name

Address (if you want an answer)

Country

Email

Where did you stay  Date

- Did you book:
- ☐ Directly
  - ☐ Through the website
  - ☐ Through a Travel Agency
  - ☐ Through the owner Association

How did you learn about **Europe of Traditions** and why you chose us?

Did **Europe of Traditions** answer your expectations? ☐ Yes  
☐ No

- If not, why?
- ☐ Welcome?
  - ☐ Comfort?
  - ☐ Cooking?

Other comments:



Please fill this form and send it to:

EUROPE OF TRADITIONS • CENTER • Praça da República • 4990-062 Ponte de Lima • Portugal;  
Fax (+351) 258 931320 • Email info@europetraditions.com

Name

Address

Zip code  Town  Country

Email

I would like to get  copy(s) of **Europe of Traditions Accommodation Guide**.

Date  Signature



Association in cooperation  
with Europe of Traditions  
[www.fazendasdobrasil.com](http://www.fazendasdobrasil.com)

[www.europetraditions.com](http://www.europetraditions.com)

*Europa Traditionæ Consortium  
is a consortium of six organisa-  
tions running for ten years, offer-  
ing a personal style of hospitality  
in homes of character.*

*All are interested in preserving  
and helping their customers to  
enjoy the heritage and culture of  
their country and their region,  
whether this is reflected in the  
architecture or food and wine.*

*With the Eurotrad Project the Eu-  
rope of Traditions will be enlarged  
to ten European Associations.*

*The four new members are:  
Casas Grandes de Hispania from  
Spain, Case della Tradizione  
from Italy, Tradition Österreich  
from Austria and Magyar  
Vendégváró Ódon Házak  
Egyesület from Hungary.*



*Solares de Portugal*

#### PORTUGAL · HEAD OFFICE

SOLARES DE PORTUGAL  
Praça da República · 4990-062 Ponte de Lima  
**Tel** (+351) 258 741672 · **Fax** (+351) 258 741444  
**Email** [info@turihab.pt](mailto:info@turihab.pt)  
[www.solaresdeportugal.pt](http://www.solaresdeportugal.pt)

#### IRELAND

THE HIDDEN IRELAND  
PO Box 31, Westport · Co Mayo · IRELAND  
**Tel** (+353) 98 66650 / 1 662 7166  
**Fax** (+353) 98 66651 / 1 662 7144  
**Email** [info@hiddenireland.com](mailto:info@hiddenireland.com)  
[www.hiddenireland.com](http://www.hiddenireland.com)

#### FRANCE

CHÂTEAU ACCUEIL  
Château de Garrevaques  
81700 Garrevaques · FRANCE  
**Tel** (+33) 5 63750454 · **Fax** (+33) 5 63702644  
**Email** [m.c.combes@wanadoo.fr](mailto:m.c.combes@wanadoo.fr)  
[www.chateau-accueil.com](http://www.chateau-accueil.com)

#### UNITED KINGDOM

WOLSEY LODGES  
9, Market Place, Hadleigh  
Ipswich, Suffolk IP7 5DL · UNITED KINGDOM  
**Tel** (+44 1 473) 822 058 · **Fax** (+44 1 473) 827 444  
**Email** [wolsey@wolseylo.demon.co.uk](mailto:wolsey@wolseylo.demon.co.uk)  
[www.wolsey-lodges.co.uk](http://www.wolsey-lodges.co.uk)

#### NEDERLAND

ERFGOED LOGIES  
Apollolaan 133-135  
1077 AR Amsterdam · NEDERLAND  
**Tel** (+31) 20 - 47 05 085 · **Fax** (+31) 20 - 47 00 978  
**Email** [info@erfgoedlogies.nl](mailto:info@erfgoedlogies.nl)  
[www.erfgoedlogies.nl](http://www.erfgoedlogies.nl)

#### SLOVENIA

HIŠE S TRADICIJO  
Mala ulica 8 · SI-1000 Ljubljana · SLOVENIA  
**Tel** (+386) 1 434 2660 · **Fax** (+386) 1 434 26 64  
**Email** [info@hisestradicijo.com](mailto:info@hisestradicijo.com)  
[www.hisestradicijo.com](http://www.hisestradicijo.com)



*Hiše s Tradicijo*

## **SOLARES DE PORTUGAL - HEAD OFFICE**

Praça da República · 4990-062 Ponte de Lima

**Tel** (+351) 258 741672 · **Fax** (+351) 258 741444

**Email** info@turihab.pt

www.solaresdeportugal.pt



*Solares de Portugal*

## **CASAS GRANDES DE HISPANIA**

Monte Bachao, s/n · Santa Cristina de Fecha

15898 Santiago de Compostela · SPAIN

**Tel** (+34) 981 194 118 · **Fax** (+34) 981 19 20 28

**Email** info@pazosdegalicia.com



## **CASE DELLA TRADIZIONE**

Castello Savorgnan di Brazzà

33030 S. Margherita · Udine · ITALY

**Tel\Fax** (+39) 0432 672268

**Email** info@casedellatradizione.it



## **TRADITION ÖSTERREICH**

Schlossgasthof Rosenberg

A-3573 Rosenberg 2 · AUSTRIA

**Tel\Fax** (+43) 0 29 82 30 577

**Email** schlossgasthof-rosenburg@wvnet.at



## **HİŞE S TRADICIJO**

Mala ulica 8 · 1000 Ljubljana · SLOVENIA

**Tel** (+386) 1 434 2660 · **Fax** (+386) 1 434 2464

**Email** info@hisestradicijo.com

www.hisestradicijo.com



HİŞE S TRADICIJE

## **MAGYAR VENDÉGVÁRÓ**

### **ÓDON HÁZAK EGYESÜLET**

9600 Sárovar · Vad kert út 1 · HUNGARY

**Tel** (+36) 309577871 · **Fax** (+36) 95 523 603

**Email** sarvartours@hu.inter.net



*www.europetraditions.eu*



PROJECT PART-FINANCED  
BY THE EUROPEAN UNION