



### *“Special places to stay”*

*The beginning of this new type of partnership through “Europe of Tradition” started, for the development of this project in Italy, at the International Meeting in the Villa Manin of Passariano (Udine) the 1st February 2002, promoted from the Regional Centre for the cataloguing and restoration of cultural heritage.*

#### **CASE DELLA TRADIZIONE**

Castello Savorgnan di Brazzà  
33030 S. Margherita · Udine · Italy  
**Email** [info@casedellatradizione.it](mailto:info@casedellatradizione.it)  
**Tel\Fax** (+39) 0432 672268



The Italian Association, “Case della Tradizione”, comprising owners of historic houses in rural areas offering a special cultural environment, was established at Palazzo Belgrado, seat of the provincial administration of Udine on the 24th of May 2006.

Between the 25th and 29th of May 2005, villas, houses, and castles in the provinces of Belluno, Udine and Venice, were selected by a European committee, which in turn arranged meetings with the appropriate family owners, to form an association that could agree on rules for its members in a “Europe of Tradition” Association.

Participating at this meeting were Francisco de Calheiros and João Gomes de Abreu Lima for Adril-Portugal, Maria do Céu Sá Lima for Turihab-Portugal, ETC Members like Shaun Parsons for Wolsey Lodges-UK, George Gossip for Hidden Ireland-Ireland, Johan Neppelenbroek and Brigitte Barmans for Erfgoed Lodges-Netherlands, Uros Buda for Hise s Tradicijo-Slovenia, Gillien Vasquez for Casas Grandes de Hispania, Benito Vazquez for Pazos de Galicia-Spain and other European observers.

During the meeting of property owners, discussions evolved around the practice of “relaxed tourism”, the use of elegant guest accommodation, a tradition in this part of Italy among several families such as the owners of Palazzo Lantieri, Villa Gallici, Villa Coren, Ca’ Marcello, Villa Rizzi and Palazzetto Pisani. In a different way, other historic country houses like Villa and Farm Iachia, the Castle of Villalta (Province of Udine), Villa Tron (Province of Venice), Villa Fulcis (Province of Belluno) are joining a new trend in creating permanent employment in rural areas through the network of “Europe of Tradition” in Italy.





*“In summer, visitors to Belluno will find an even wider and more attractive selection of things to do in the area: from simple walks to trekking, climbing and extreme sports such as rafting, as well as horse-riding, mountain bike, windsurfing on the lakes and hiking in the parks.”*

The Province of Belluno looks onto the alpine area, and contains most of the extraordinary natural wonder that bears the name of the Dolomites: hence the equation Dolomites = Province of Belluno.

The curtain rises on the gentle hills of the Belluno Pre-Alps; the River Piave meanders through valleys and grassland, fir and larch trees; lakes of extraordinary beauty are scattered throughout the numerous valleys in the province.

A pure, unspoilt, almost wild experience is palpable from one end of this area to the other; but the province is also easy to travel around and pleasant to live in, just as much in summer as in winter.

From December to Easter it is a paradise for skiers and other winter sports enthusiasts: from Cortina d'Ampezzo, the Queen of the Dolomites, to the Civetta and Arabba-Marmolada ski areas, Val Biois, Auronzo di Cadore, Comelico, Sappada and a long list of other places offer even the hardest to please sports fans a whole host of exciting, unforgettable experiences - on skis, snow-shoes, sledges, skates and bobsleighs.

In summer, visitors to Belluno will find an even wider and more attractive selection of things to do in the area: from simple walks to trekking and climbing to extreme sports such as rafting, as well as horse-riding, mountain bike, windsurfing on the lakes and hiking in the parks.

The Province of Belluno also has a great deal to offer art and culture lovers, in Feltre *la Serenissima*, Belluno “the Shining City” and Pieve di Cadore. Visitors can see noble residences, around a hundred Venetian villas dotted around the Belluno and Feltre areas, museums and cultural centres. The area has a thousand and one stories to tell, with over 50 museums of ethnography, history, geology, botany and arts and crafts.



## PROVINCIA DI BELLUNO

Via Sant'Andrea 5

32100 Belluno - ITALY

Tel (+39) 0437 959215 / 0437 959362

Fax (+39) 0437 950041

[attivita.produttive@provincia.belluno.it](mailto:attivita.produttive@provincia.belluno.it)





The Province of Udine was founded in 1797 as a department of Passariano, set up by Napoleon Buonaparte after his conquest of the Homeland of Friuli.

Udine becomes the fixed capital of a territory that has no difficulty in imposing itself even during the following political systems. The Province of Udine or of Friuli becomes a consolidated administrative reality both with the Austrians during the Lombard-Venetian rule in the first half of the 19th century, and with the Italians starting from 1866.

During the 19th century, the provincial government intervenes in several economic and social fields of a vast and difficult land, impoverished by an unfortunate series of natural and historical events. The town of Udine and its Province gain importance during the First World War when the town becomes the seat of the Supreme Headquarters of the Italian army when after Caporetto, the Austro-German troops invade the land.

During the Second World War, amidst the distress of the occupation and civil war, a new Province is born, which has been able to promote an authentic development.

The Province carries out several competences in the planning of the following activities: cultural promotion, education, environment, activities of social aids and of solidarity, viability and local public transport, sports, hunting and tourist activities.

The very diverse rural landscapes with rich and famous vineyards connected with historical family's villas, are very famous. This environments stretches away from the sandy lagoon beaches, to the fertile plains to reach the "magredi" (gravelly territory) in the highlands and in the Julian and Carnic Alps. The morainic hills were fortified during the Roman Period, as a line of defence for the town of Aquileia and later, in Medieval Time, acquired strength with 300 castles, many of them existing still today.

*"The territory of Province of Udine is full of artistic, cultural and musical events, some of which have international relevance, such as "Mittelfest", "Folkest", "Europa dei cuori".*

*In many towns, from sea-towns to billy and mountain-towns, there are, also, a lot of traditional rural events, in which the tourist can savour the natural local products."*



#### PROVINCIA DI UDINE

Piazza Patriarcato, 3

33100 Udine - Italy

Tel (+39) 0432 279721

Fax (+39) 0432 279310

Email [provincia@provincia.udine.it](mailto:provincia@provincia.udine.it)







*“Only a few kilometres from the beaches, where delightful summer holidays can be enjoyed, awaits a welcoming and relaxing natural environment. Stretches of the ancient routes taken by the Roman cohorts, the nordic tribes of the great invasions and the troops of Ezzelino da Romano can be followed.”*

The Venetian territory, extending between the mouths of the rivers Tagliamento in the north and Adige in the south, is often ignored by the mass tourism, centred on the fascinating “presence” of Venice and the beautiful beaches of its coastline.

Even today many are unaware of province’s attractions: the environmental wealth of its lagoons (not only the Venetian lagoon, but also that of Caorle with its characteristic fisher’s houses called “casoni”), the gentleness of the rural landscape of its immediate hinterland, the tranquillity of its small medieval towns, the fascination of its country hamlets and the magical atmosphere of its Venetian villas, in particular in the Riviera del Brenta, that from Venice runs until Padova, with Villa Malcontenta, projected in the sixteenth century by Andrea Palladio for the important Foscari Venetian family. Along this river it is possible to admire, among the others, an imposing villa built in the seventeenth century, Villa Pisani, now public Museum.

Only a few kilometres from the beaches, where delightful summer holidays can be enjoyed, awaits a welcoming and relaxing natural environment. Stretches of the ancient routes taken by the Roman cohorts, the nordic tribes of the great invasions and the troops of Ezzelino da Romano can be followed. Furthermore, there are museums and archaeological sites to visit, such as Altino, an important Roman site near the lagoon facing Torcello. There are prestigious sixteenth, seventeenth and eighteenth century villas to admire with their picturesque grounds, popular traditions to learn about and to experience personally in the piazza festivals, in the religious observances within the shadow of the campanile, through contact with the people or at meals with its unusual and refined food.



## PROVINCIA DI VENEZIA

Settore Turismo

Corso del Popolo, 146/D

30172 Mestre Venezia - Italy

Tel (+39) 0412501811

Fax (+39) 0412501858

Email [turismo@provincia.venezia.it](mailto:turismo@provincia.venezia.it)

## PROVINCE OF BELLUNO

- 01 Villa Buzzati
- 02 Villa Fulcis
- 03 Villa Gaggia

## PROVINCE OF UDINE

- 04 Castello di Susans
- 05 Castello di Villalta
- 06 Palazzo Lantieri
- 07 Villa Coren
- 08 Villa Dragoni
- 09 Villa Gallici Deciani
- 10 Villa Iachia

## PROVINCE OF VENEZIA

- 11 Ca' Marcello
- 12 Palazzetto Pisani
- 13 Villa Colloredo
- 14 Villa Rizzi-Albarea
- 15 Villa Tron Carrara Mioni





**Valentina Morassutti**

Via Visome 18 · 32100 Belluno · Italy · Tel. +39 0437926414



There is something magical about Villa Buzzati; the house is rich in history and folklore. It was the birthplace of Dino Buzzati, my grandmother's brother, who was a famous 20th century writer, journalist and painter. He used to spend the month of September in this house, writing, taking walks and climbing in the nearby Dolomites. Villa Buzzati is a typical example of Romantic architecture; the oldest part of the villa, the central body, dates back to 1500. The whole group of rural buildings is interesting, with a little 16th century church consecrated to San Pellegrino. The Villa lies 2km from Belluno, nestling in green countryside, making it the perfect location for a pleasant holiday.

**Annual closing**

Open all year

**Facilities | Activities**

Walking and trekking in the Dolomiti Bellunesi National Park; Climbing; Golf (35 km); Surf – KiteSurf (20 km); Horse-riding (5 km); Possibility to host/organize courses and stages.

**Accommodation**

1 family bedroom: 1 double/twin bed with bunk bed in an adjoining room.  
1 double/twin bedroom with sofa bed (for 2 people). 1 room with 2 beds [attic].

Email [valmoras@libero.it](mailto:valmoras@libero.it)**Location**

Belluno

**Approach**

2km from the centre of Belluno on the Sinistra Piave Provincial road, in the direction of Limana/Feltre. Indicated on the little road on the right, before the little red church of San Pellegrino.

**Jennifer Wendrich Tropea**

Via del Boscon 369 · 32100 Belluno · Italy · Tel. +39 0437296680

**Annual closing**

Open all year

**Facilities | Activities**

Tennis; Golf (35km); Horse –riding; Surf and kite surf (20km); Biking; Walking; Climbing; Painting courses and flower arrangement courses held by Jennifer.

**Accommodation**

Suite for 4

Email [jentrop@libero.it](mailto:jentrop@libero.it)

The most important feature of this large country house, built by the Fulcis family in the 17th century, is not so much its particular architectural significance as its "remarkable environmental value, blending so harmoniously as it does with the surrounding landscape".

The splendid panorama of the wide, sun-drenched, open countryside which leads gently down to the Piave River, with Nevegal Hill in full view, makes Jennifer's B&B in Villa Fulcis one of the most beautiful places in the Valley of Belluno.

**Location**

Belluno

**Approach**

The villa is situated between Belluno and Sedico, 3 km from Salce, in the direction of Sedico, near San Fermo (on the right side of the Piave River).

**Roberto Giannelli**

Via Garibaldi 28 · 32032 Feltre · Belluno · Italy · Tel. +39 04392043



This beautiful 17th century building is located in the medieval heart of Feltre. With its period furniture, refined decoration and inspired Venetian style, it offers all the ingredients for an idyllic stay, nestling between Cortina and Venice. Villa Gaggia, which has been restored by the owner, is surrounded by a fine park, with a pool, and is a veritable haven of calm. The elegant, luxurious guest rooms are situated on the first floor of the house. All the rooms have private bathroom facilities, TV and fridge-bar. Breakfast available in the villa, lunch and dinner by special arrangement with the trattoria 20 metres away.

**Location**  
Belluno

**Approach**

Coming from Treviso/Belluno/ Bassano, follow the signs for the railway station. When you come to the roundabout, follow the signs for the city centre, continue for approx. 500m until you come to a parking area on your right (piazza Plebiscito). Villa Gaggia faces onto the square, at number 28.

**Annual closing**

First week of September

**Facilities | Activities**

Swimming pool inside the villa (only open in summer); Skiing 15km away; Golf 25 Km away; Trekking; Walking in the Dolomiti Bellunesi National Park (9Km); Mountain Bike circuits; Paragliding in summer at 15Km.

**Accommodation**

1 single bedroom, 1 twin bedroom  
1 double bedroom, 1 bedroom for 3.

**Email** villagaggia@libero.it

**Piero Gervasoni**

33030 Susans di Majano · Udine · Italy · Tel. +39 0432948090

**Annual closing**

Open all year.

**Facilities | Activities**

The total capacity of the Susans Castle salons suitable for banquets, weddings, cultural events or meetings amounts to 500 people while outdoor capacity for exhibitions, events, theatre shows amounts to 2.000 people.

**Accommodation**

The towers which were furnished with care and elegance and converted into four small suites.

**Email** info@castellodisusans.com



The architectural style and layout of Susans Castle are still those requested in 1636 by Count Fabrizio di Colloredo. Raised and educated at the court of Ferdinand I the count decided to have a splendid Medici-style residence built over the ruins of a medieval construction. The Colloredo family lived in this splendid palace for over three centuries until the end of the First World War. From the top of its hill, Susans Castle commands a truly breathtaking 360° view across the whole of Friuli.

Now restored to its former splendour, Susans Castle encompasses broad spaces and has a number of salons of different sizes furnished with extreme elegance.

**Location**

From the top of its hill Susans Castle commands a truly breathtaking view from the Tagliamento valley to the Carnia mountains and the gentle Friuli hills. It is located 23 km from Udine, 140 km from Venice and only 60 km from Ronchi dei Legionari (TS) Airport.

**Approach**

From the motorway: from Venice or Trieste taking the Udine-Sud exit and following the signs Osoppo/Majano. From Tarvisio and Austria taking the Gemona exit and following the signs to Majano. The closest airport is the Trieste/Ronchi dei Legionari airport.



**Counts Gelmi di Caporiacco**

Via Castello di Villalta 27 · 33100 Udine · Italy · Tel. +39 0432800171



Located along the far-most arch of the morainic amphitheatre of the Tagliamento river, its origins date back to an ancient Roman settlement as is proved by the archaeological findings unearthed in the territory, the toponym derives from the Latin *fagus* meaning beech. The first document recording the existence of the castle with the surrounding borough dates back to 983 and bears the signature of Ottone II of Sassonia. Suggestive and very important is the castle in Villalta; furthermore Cjase Cocel hosts the interesting Museum dedicated to farming life.

**Location**

Udine

**Approach**

8 km out of the town of Udine – direction San Daniele. Via Castello di Villalta 27

**Annual closing**

Open all year. Minimum stay - a week.

**Facilities | Activities**

Walking; Gardens; Medieval banquets.

**Accommodation**

3 or 4 double-bedrooms with bathroom en suite.

Special conditions -No animals.

**Email** [sergiogelmi@virgilio.it](mailto:sergiogelmi@virgilio.it)**Counts Levetzow Lantieri and Piccolomini**

Piazza S. Antonio 6 · 34170 Gorizia · Italy · Tel. +39 0481533284

**Annual closing**

Open all year

**Facilities | Activities**

Meals on request, can be served in a charming dining room. Suggestive salons up to 200 m2 are also suitable for conferences, cultural events and glamorous dinners.

**Accommodation**

On the upper floor there is a double bedroom and a suite with one double and one single bedroom, all with private bathroom and on the ground floor a suite with two double bedrooms, bathroom and living room.

**Email** [contatto@palazzo-lantieri.com](mailto:contatto@palazzo-lantieri.com)

The history of Palazzo Lantieri dates back to the 15th century, when the ancestor of the present owners, Antonio Lantieri di Paratico, came into possession of the house which had been the fortress of the southeastern town entrance since the 13th century. The Palazzo with its historical features hosts numerous precious antics as well as a great number of memories: through centuries many artists, musicians, philosophers and people of political significance, like emperors and popes have stayed at the house. Nowadays in the large rooms, including the house chapel and gardens, impressive and extraordinary works by very important contemporary artists create a dialogue with the architecture, frescoes, paintings, furniture and family portraits.

**Location**

Palazzo Lantieri is located in the historical center of Gorizia, 300 mt from the Slovenian border. The railway station is in the city (2 km) while the International airport Ronchi dei Legionari (Trieste) is 25 km away and Venice 90 km.

**Approach**

Arriving from Venezia (A4) or Udine (A4) direction Trieste. Exit for Villesse – Gorizia. After about 15 km enter Gorizia, at the roundabout take exit for Gorizia center.



**Daniele Cecioni**

Via Cividale 1 · 33040 Siacco di Povoletto · Udine · Italy · Tel. +39 0432679078



Villa Corèn was built in the XVI century and the towers were added at the side in the XVIII. It was once the property of the nobles Caiselli and Belgrado, but it has been in the family since the mid XVIII century.

It is surrounded by a garden and small park, about 5,000 square meters, completely enclosed by a wall.

The Villa was seriously damaged by the 1976 earthquake, completely restored and now represents a typical Friulian residence of country gentlemen.

**Location**

Povoletto · Udine

**Approach**

A 23 motorway exit: UDINE NORD. Take the left road in front of the exit and stay on the bypass till a roundabout where you'll find directions to Povoletto. Then follow the directions to Siacco and Villa Corèn.

**Annual closing**

Bedrooms in the Villa are available from May to September.  
The apartments in the rural building are available all year round.

**Facilities | Activities**

At our guest's free disposal we offer a sauna, a large whirlpool and a small meeting room for up to 20 people.

**Accommodation**

2 double bedrooms in the Villa;  
6 apartments for 2\5 people in the large building that used to be cellar and barn.

Email [info@villacoren.com](mailto:info@villacoren.com)**Marina Danieli**

Via Florio, 18 · 33042 Buttrio · Udine · Italy · Tel. +39 0432673732

**Annual closing**

Open all year

**Facilities | Activities**

Mountain bike; Walks in the vineyards;  
Tennis court (2 km far).

**Accommodation**

10 double bedrooms  
All with private bathroom

Email [brutmus@tin.it](mailto:brutmus@tin.it)

The villa surmounting the hills of Buttrio, literally at the western tower, was originally built in the late 16th and early 17th century, as revealed by the fresco on the loggia wall on the first floor. It is a hunting scene not yet attributed to a particular artist. Alterations were made to the building in the 17th century, carried out by the Bertolini family, necessary to enable frescoes to be produced between 1786 and 1803 by Chiarottini, Canal and by the school of Morelli, all Friulian painters of notable ability. The complex was acquired by Marina Danieli in 1985, who began the restoration project in 1998. All structural work has been carried out with utmost respect for the building, using where possible the original materials. Three years of painstaking work were required to restore the frescoes.

**Location**

Located on the top of the hills of Buttrio, 10 km far from Udine.

**Approach**

From Venice Airport take the Motorway A4, direction Udine. Exit Udine Sud. Continue following the direction of Buttrio-Manzano. Take the S.S. 56 Udine-Trieste. After 6 km, after the bridge on the Torre river, at the traffic-lights turn on the left and enter in Via Divisione Julia S.P. 14 in Buttrio. After the church tower turn on the right and enter in Via Manzano. You start to go to a little hill. Then, when you arrive on the top of the hill you turn on the left, on Via Florio.

### Count Luigi Deciani

33010 Cassacco · Udine · Italy · Tel. +39 0432880532



Lovingly restored to its original splendour, Villa Deciani is the private home of the Count Deciani family set in a vast park with majestic century old trees at the foot of the Alps that border Italy with Austria and Slovenia.

Located in one of the most beautiful regions of Italy, Villa Deciani is the perfect destination to relax in the enchanting private environment or to explore the areas beaches, golf clubs, castles, mountains and spas.

**Location**  
Udine

### Approach

Located in the Friuli Venezia Giulia region in the Celtic village of Montegnacco (Cassacco), (Highway A23 exit Udine Nord) just outside the ancient centre of Udine.



### Annual closing

Open all year

### Facilities | Activities

Meals on request; Swimming pool; Horse riding; Bicycle trails; Massages; Professional kitchen with cooking classes for small groups. Cultural and gastronomic excursions can be organized in the region renown for its delicious food and wine.

### Accommodation

5 beautiful bedrooms & 4 apartments. All with onsite facilities.

**Email** [info@villaiachia.it](mailto:info@villaiachia.it)



### Andrea e Erica Iachia

Via Mosettig 15 · 33050 Ruda · Udine · Italy · Tel. +39 043199250



### Annual closing

Open from end of April to end of October

### Facilities | Activities

Walking; Bicycle; Swimming pool; Piano; Reading; Golf (two course in 15 km); Beaches (10 km); Wine route; Tennis; Horse riding; Rafting; Boat tour in Grado lagoon.

### Accommodation

5 suites

**Email** [info@villaiachia.it](mailto:info@villaiachia.it)



The magic and timeless atmosphere of Villa Iachia will bring you back through the centuries. You will live an exciting experience through mystery and history, walking under secular oaks and hornbeams which inspired the famous writer Italo Svevo.

A rare and precious oasis of peace and serendipity surrounded by nature and wrapped by ancient country flavours. The charm of Villa Iachia seems to come out of long ago lost dreams.

### Location

In the middle south of Friuli - 1 hour from Venice, 40 min. from Trieste, 1 hour from Austria

### Approach

From Venice: motorway A4 to Trieste, exit Villesse, direction Grado (5 km)  
Airport: Venice Marco Polo 90 km, Trieste 15 km.  
Railstation: Cervignano AG 5 km.



**Jacopo Marcello**

Via dei Marcello 13 - 35017 Levada di Piombino Dese - Italy - Tel +39 0499350340



Ca' Marcello was built in 1550 by the Marcello family, one of the most powerful and noble families of Venice whose descendants are still living here. The 'Italian' style garden in front of the façade has a fountain, statues and flower beds. The old-century park (70.000 m2) is fully fenced and rich in wonderful plants which embrace a lovely dove cote, a chapel and a large fish pond. Inside one of the arcaded wings of the villa there is the independent 'Barchessa' apartment (8-9 sleeps). Furniture and objects belonging to the family since the 16th century, period paintings, objects of art and new matching refurbishing create a warm and welcoming ambience.

**Location**

Ca' Marcello is located in the middle of the Veneto countryside. Distances from main cities are: Venice 40 min, Padua 45 min, Treviso 20 min.

**Approach**

From Venice airport (40 min): Take the A27 motorway following 'Belluno' directions and exit at 'Treviso Sud' exit. When out of the motorway, turn left at the first roundabout and then follow the road until the first big traffic light, where you turn left again. When you reach the village of Quinto, turn right at the second traffic light following directions to Badoere. When you arrive in Badoere, follow the Villa Marcello brown road-signs to get there.

**Annual closing**

Open all year

**Facilities | Activities**

A private and fully-equipped garden with swimming pool is at your exclusive use.

**Accommodation**

The 'Barchessa' independent apartment (400 sq/metres, 8-9 sleeps in 4 bedrooms with 3 bathrooms, living room, dining room, studio and kitchen) with air conditioning, 2 satellite TVs, 2 stereo CD players and bar with spirits.

**Email** info@camarcello.it

**Counts Ferri de Lazara**

San Marco 2814 - Calle Pisani Genova - Venice - Italy - Tel. +39 0415232550

**Annual closing**

From July the 10th to end of August.

**Facilities | Activities**

Possibility of organising all kinds of receptions, such as dinner parties, cocktails, weddings etc., or even group visits up to 45 persons.

**Accommodation**

3 double rooms with bathrooms. Special guests may reserve the entire main floor (Piano Nobile) with an additional bed room at conditions to be agreed.

**Email** info@palazzettopisani.com



The Palazzetto Pisani was rebuilt at the beginning of the 18 Century, upon an older house on the Grand Canal by Giovanni Poleni, the famous astronomer, mathematician and physicist, who made it his private residence in Venice. In 1761 it was acquired by Andrea Pisani who wished to give to his grandiose palace a view on the Grand Canal. The two buildings joined for not too long as the fall of the Republic of Venice marked also the end of the fortune of that branch of the Pisani Family. In 1816 the Palazzetto was again sold separately. The Palazzetto had a new period of splendour in the 20 century as HRH the Duke of Genova, who represented the Royal Family in Venice, preferred it over the Royal Palace, as his private residence. After the Second World War, the Duke Choseed to sell it to the inheritors of the San Polo branch of the Pisani.

**Location**

Venice, on the Grand Canal.

**Approach**

From Campo Santo Stefano into Campo Pisani, you will see the grandiose Palazzo Pisani (Conservatory), go through an arch, there is a passage way name, Sottoportico Pisani, farther on the left side, open an iron gate and you will reach Calle Pisani Genova.

**Andrea Meneghelli**

Via Brusaura 24 · 30030 Sambruson di Dolo · Venice · Italy · Tel. +39 041411755



Villa Colloredo is close to Dolo, a friendly town located along river Brenta, 20 km from Venice and Padova. In the heart of the Venetian countryside, Villa Colloredo, an 18th century typical Venetian building, is our family home since many years. The atmosphere is not that of a formal nature, as found in hotels, but one affording a very personal touch with the benefit of extensive local knowledge. With our love of contemporary art you'll see sculptures and paintings all over. Our garden, where we like growing ancient varieties of fruit trees, provides us the produce from which we make our marmalades, served to you at breakfast.

**Location**  
Venice

**Approach**

Go out of the A4 at Dolo Mirano, then proceed for 3 km to the centre of Dolo. When you are at the traffic-lights near the church of Dolo, turn left and drive on to the SS11 towards Mira and Venezia. After about 1.5 km turn right crossing the bridge on the Brenta and go straight on to Sambruson and Chioggia as far as the traffic-lights. At the crossing with a T shape turn left and after 50 metres turn right towards the centre of Sambruson. Go on for 100 metres and then take the road on the right of the church. Driving for 100 metres on this country road you will find Villa Colloredo on your right.

**Annual closing**  
Open all year

**Facilities | Activities**

Tasteful and delicious typical Mediterranean and Venetian food are served upon request. The Hall is suitable for meetings of 25 people, while the huge Granary can accept till 100 people. The setting can be arranged according to the various needs

**Accommodation**

1 double bedroom  
3 apartments for 2/5 people

**Email** andrea@villacoloredo.com

**Dr Aida and Pierluigi Rizzi**

Via Albarea 53 · 30030 Pianiga · Venice · Italy · Tel. +39 0415100933



**Annual closing**  
Open all year

**Facilities | Activities**

Breakfast on the lake shore; Jogging; Walking; Sauna-fitness, with aesthetic services; Sunbathing and Swimming; Sitting rooms; Library; Music hall; Guarded parking; Car and bike to rent.

**Accommodation**

Three floors, each with a Suite. All with fresco and private bathroom, canopie beds, ancient furnitures from XVII / XIX century but modern comfort.

**Email** info@villa-albarea.com



Rizzi-Albarea Villa is the most ancient Venetian Villa in the "Riviera del Brenta" area, in a strategic position between two beautiful art cities: Venice and Padua, but also near other wonderful cities: Treviso, Vicenza, Verona and at only 2 kms from the Dolo highway exit, along the Milan-Venice highway. Millenary oasis of peace and very charming, Albarea Villa is in the middle of the green nature and it is surrounded by two hectares of park. The garden is a romantic apotheosis of climbing roses, old aged trees, ancient statues of wood divinities, birds of many kinds, herons, swans and ducklings that glide into the water of a gorgeous lake with a small island, bridges and a little panoramic tower. And all around there are flower beds, gazebo, wisteria, roses, jasmines and a beautiful swimming pool.

**Location**  
Venice

**Approach**

Albarea Villa is reachable with the A4 Milan-Venice highway: Dolo highway exit (First exit after Est Padua), in the Milan-Venice direction. After the exit go straight to the traffic-light and then go still straight for 1,5 km. At the sign Albarea turn right and go on for about 1 km till Rizzi Villa (Albarea street n°53).



**Alessandro and Gabriella Mioni**

Via Ca' Tron, 23 · 30031 Dolo · Venice · Italy · Tel. +39 041410177



Villa Tron Carrara Mioni stands on the Riviera del Brenta a beautiful region crossed by the Brenta Canal, an important waterway linking Padua to the Venice lagoon and along which Venetians built their mainland houses.

Walls surround the villa, the XVI century octagonal oratory and their adjoining grounds which include extensive romantic style park with an orchard, an ice-house and a pond. Hills sheltered by aged trees, a large variety of plants and streams make the park one of the most attractive naturalistic sites in the Riviera del Brenta. The villa is the permanent residence of the Mioni family.

## Location

Villa Tron is located 1 Km from the centre of Dolo along the Riviera del Brenta between Venice 20 Km and Padua 18 Km.

## Approach

Come off the A4 Milano- Venezia motorway at Dolo - Mirano (1° exit after Padua). At the roundabout take the exit for Mira. After about 4 Km when you arrive in the main road Riviera del Brenta, take the right hand turn signposted Padua and after 2 Km you will find Villa Tron on your right, 200 m after the Locanda "Alla Posta".

## Annual closing

Open all year. Minimum stay 2 nights.

## Activities

Breakfast is normally served in the traditional kitchen or in the garden in summer. Dinner available on request. Garden; Walking; Library.

## Accommodation

Upperfloor - 1 double bedroom with private bath and a large terrace overlooking the park. On the floor above a suite with 1 double bedroom and 1 single which share a bath.

**E-mail** villatron@libero.it







*“Special places to stay”*

*Austria's position at the junction of important communications routes enables easy access to the growing markets of Central and Eastern Europe.*



Over the past decade, Austria has developed into a prime location for tourists within Europe, due largely to the excellent basic conditions for tourists setting up here: above all the country's position at the gateway to Central and Eastern European markets, its geographic positioning right at Europe's core, its EU membership and the introduction of the Euro. Tourists also profit from Austria's economical and social stability, low rates of tax and the booming high-tech industry. A highly qualified labour force and optimal infrastructure are also deciding factors in the location's attraction.

## **Austria – an overview of what the area has to offer:**

- Core position in Central Europe: Austria's position at the junction of important communications routes enables easy access to the growing markets of Central and Eastern Europe.
- Excellent infrastructure: Austria has around 2,000km (1,200 miles) of motorways and expressways, a highly developed railway system, the Danube Waterway and a dense network of connecting flights.
- Qualified and motivated labour force: in the IMD World Competitiveness Yearbook 2005, which analyses and evaluates 51 nations, Austria came fourth in terms of worker motivation and ranks near the top in the following topics skilled labor and educational system.
- High quality of life, political and social security: Austria scores very highly in the international arena in a comparison of quality of life, the environment and personal security. The country's extensive cultural offerings and excellent shopping and leisure facilities add to its substantial advantages.

**TRADITION ÖSTERREICH**  
 Schlossgasthof Rosenberg  
 A-3573 Rosenberg 2 · AUSTRIA  
 Tel\Fax (+43) 0 29 82 30 577  
 Email [schlossgasthof-rosenburg@wnet.at](mailto:schlossgasthof-rosenburg@wnet.at)



- 01 Auerbach Hof
- 02 Thannegg-Moosheim Castle
- 03 Marienschlöss
- 04 Burghotel Deutschlandsberg
- 05 Kogl Castle
- 06 Heihsgut
- 07 Rosenburg Castle
- 08 Ernegg Castle
- 09 Wasserburg Castle
- 10 Bernstein Castle
- 11 The Fortress of Oberranna
- 12 Neuhaus Castle
- 13 Altenhof Castle
- 14 Mailberg Castle



**Giselher Graf V. Matuschka**

Wimbergeramt 2 · 4392 Dorfstetten · Austria



Embedded in the hilly landscape of the southern Waldviertel and surrounded by cultural and natural monuments, the Auerbach Hof lies at 550m elevation on 14 hectares of meadow and forest.

Approximately 135 km west of Vienna and 70 km east of Linz, Auerbach Hof allows its guests to choose between cultural and sportive pursuits or meditative tranquillity. If you are looking for the conformity of international hotel chains, then this is not the place for you. No TV, no Internet access (except of course in emergencies), no mobile phone network and no minibar. Instead, attractive guestrooms and a cultivated and welcoming host.

**Location**

Dorfstetten (Lower Austria)

**Approach**

Directions (from the east): A1 to Ybbs; Persenbeug in the direction of Grein along the Danube; Sarmingstein right in the direction of Waldhausen im Strudengau; from Badeseer Waldhausen 1.9 km in the direction of Zwettl. Directions (from the west): A1 to Amstetten West; through Grein along the Danube to the fork Waldhausen; from Badeseer Waldhausen 1.9 km in the direction of Zwettl.

**Annual closing**

Open from May to October  
Contact (+43) 676 9438124

**Facilities | Activities**

Culture - Melk Monastery; Zwettl; Waldhausen; Schallaburg; Burg Clam; Greinburg; and more. Nature - Ysperklamm; Druiden Trail (11 km)

**Accommodation**

4 double bedrooms  
All rooms with shower and toilet no TV.

**Email** giselher.matuschka@chello.at

**Schrempf family**

Moosheim · Schloss 1 · 8962 Gröbming · Austria

**Annual closing**

Open from January to March and from May to October  
Contact (+43) 3685 23210-0

**Facilities | Activities**

Hiking; Swimming; Golf; Horseback-riding; Adventure sports.

**Accommodation**

18 bedrooms  
7 double rooms and 7 suites

**Email** info@schloss-thannegg.at



Live like the aristocratic lords in this 850-year-old, lovingly restored, comfortable and family-friendly castle. Please your palate with our culinary specialties and dine in the medieval banquet hall, the idyllic castle courtyard, or on the sun terrace. Fulfil every child's dream and sleep the sleep of fairy tales in the so-called Kemenaten, or in any of the other splendid chambers.

**Location**

Gröbming (Styria)

**Approach**

From Salzburg A10 - Exit Radstadt - Pruggern - Gröbming.



**Catherine Gräfin Matuschka**

Marienschlössl Wiedendorf · A - 3491 Straß · Austria



"Marienschlössl" is a fortified, symmetrical, centuries - old little "country castle". Located in the small village of Wiedendorf, it is surrounded by charming vineyards, woods and meadows with endless cycle paths and lovely walks.

The newly renovated bedrooms, overlooking the renowned Rose Garden, are decorated in Manor Style and are accessed by their own romantic exterior staircase. The "Rose" bedroom has twin beds ensuite shower and WC. The "Sweet Pea" room has a double bed with ensuite bathroom. Breakfast is served in the sunny, rose-covered arcade of the courtyard or in the family dining -room.

If you wish to visit Vienna or to get to know the romantic Wachau region, the magnificent monasteries and castles of the Waldviertel, or if you are interested in lovely gardens or simply wish to enjoy the summer-then welcome to Marienschlössl !

**Location**

Marienschlössl Wiedendorf-Schlossstrasse 5 · 3491 Strass im Strassertal.

**Approach**

Take the A1 direction St Pölten, then take the S33 to Krems-Langenlois-S35 Straß- Elsarn-Wiedendorf.

**Annual closing**

Open from Easter to 30 October  
Contact +43 (0) 2735 -79 235

**Facilities | Activities**

Possibilities of Golf, Tennis, Cycling, Swimming, Fishing near by. Cultural visits of Vienna (45 Minutes by car), the Wachau region (20 Minutes), the Kamp-tal Gardens, incl. Baroque abbeys such as Melk, Göttweig, Altenburg, Zwettl etc and magnificent castles like Rosenberg, Greillenstein, Schallaburg etc. Good selection of wine bars and inns .

**Accommodation**

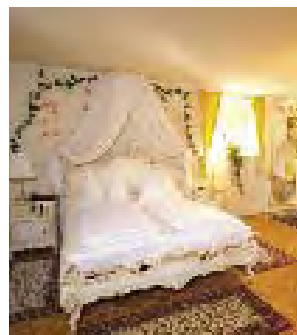
2 double bedrooms  
With shower or bath & toilet. No T.V.

**Email**

catherine.matuschka@marienschloessl.at

**Karl Christian Kollmann**

Burgplatz 1 · 8530 Deutschlandsberg · Austria

**Annual closing**

Open all year  
Contact (+43) 3462 5656-0

**Facilities | Activities**

Golf course; Horse Riding.

**Accommodation**

19 double and 3 single rooms  
All rooms are furnished with period furniture and dispose of bath/shower/toilet, anti-allergic-bed equipment, minibar, tv, safe, telephone, hairdryer and ISDN connection.

**Email** info@burghotel-dl.at



In the heart of Western Styria the castle sits enthroned high above the city of Deutschlandsberg. Its roots reach back to the Stone Age. Once militant and imposing, the castle now invites its guests to enter its ancient walls in order to experience its charming and warm hospitality. Relive the historical ambience in our unique gourmet restaurant and enjoy culinary delights characteristic of the region. Discover the medieval romance of our castle hotel: magnificent suites and expansive rooms offer historic charm paired with comfortable elegance. Our conference facilities fulfil every need: weddings, conferences, seminars, parties, events and more. Our professional staff is eager to advise you of your many options at the Burghotel Deutschlandsberg.

**Location**

Deutschlandsberg (Styria)

**Approach**

A2 - Exit Lieboch - B76 - Stainz - Deutschlandsberg

**Baron Mayr-Melnhof family**

4880 St Georgen · Attergau · Austria



Since 1872 the Kogl Castle has been owned by the Mayr-Melnhof family. Starting in 2000, the entire castle has been revitalized on a large scale and part of the house has been opened for events. The prestigious halls and guestrooms, which have been fashioned in the Austrian fin-de-siècle style, are the perfect locale for exclusive weddings, family celebrations, concerts, presentations and gala banquets. The large park, tennis courts, small swimming pool, authentic bowling alley, and idyllic teahouse directly on the shores of the Attersee are just some of our most attractive summer temptations.

Every visitor and guest at Kogl Castle becomes a part of this very special atmosphere and has a privileged and intimate view of one of Austria's most beautiful regions.

**Location**

Schloss Kogl (Upper Austria)

**Approach**

A1 - Exit St. Georgen in Attergau

**Plöchl Family**

St. Martin 1 · 5582 St. Michael/L · Austria



© HOUTZKY

**Annual closing**Open all year  
Contact (+43) 6477 8610**Facilities | Activities**

Library; Garden; Hiking; Jogging; Fishing in a nearby pond; Alpine and cross-country skiing (free shuttle bus at the doorstep and cross-country trails within walking distance); Parking in front of the house.

**Accommodation**

3 apartments (sleep 4-6 persons; one apartment is wheelchair accessible)  
House pets: on request (no surcharge)



The first reference to Heihsgut at No. 1 in St. Martin dates back to 1278. Heihsgut is located in the Alpine region of Lungau and was enlarged and turned into a castle in the 16th century.

In the course of renovations on this historic monument, three comfortable yet self-sufficient living units were created which combine the charm of the castle and the generous size of old rooms with the modern comforts of our times: radio, TV and telephones in each apartment; towels, bed and table linens; electricity and heating, all of which are included in our rates. A sizeable common room with cable TV, large stove and play area allows our guests the chance to interact and gives children a place to play while their parents rest and recuperate.

**Location**

100 km south of Salzburg (Salzburg)

**Approach**

From Salzburg take the A10 - Exit St. Michael/L



**Heidi Kalss**

Waldviertel · Niederösterreich · A-3573 Rosenberg 2 · Austria



The Rosenberg Castle, which is located directly across from the Renaissance Castle Rosenberg, is a place of great hospitality.

The house has a unique atmosphere combining romance and friendliness, joie de vivre and culture. The down-to-earth, open environment allows guests to relax and experience their surroundings with all their senses. Heavenly culinary delights served by our attentive staff heighten the pleasure. Enjoy the historic ambience of the Renaissance Castle Rosenberg by taking a tour and experience the thrilling falconry show at the largest arena in Europe. A celebration of the senses for true connoisseurs!

**Location**

Rosenburg (Lower Austria)

**Approach**

Take the A1 until St. Pölten, then take the S33 to Krems - Langenlois - S34 Rosenberg.

**Annual closing**

Open all year

Contact (+43) 02982 30577

**Facilities | Activities**

Culture - Falconry shows; Hiking.

**Accommodation**

4 double bedrooms

All rooms with shower/toilet and TV

**Email** office@schlossgasthof-rosenburg.at**Counts of Auersperg**

3261 Steinakirchen am Forst · Niederösterreich · Austria

**Annual closing**

Open from May to October

Contact (+43) 7488-71214

**Facilities | Activities**

2 golf courses (9 and 18 hole); Walks;  
Stunning views; Fishing; Horse riding.

**Accommodation**

48 beds in double rooms and suites

Garden house for 6 people

All rooms with shower/toilet and TV

**Email** info@schlossernegg.com

The idyllic castle has been owned since 1656 by the Counts of Auersperg and has not lost a bit of its original flair in the course of the centuries.

An Ernegg castle holiday promises a romantic rendezvous for two or quality time with the family in a place which unites relaxation and activity. Succumb to the enchanted atmosphere of the salon, or enjoy a glass of wine in front of the open fireplace in the Ritter Bar, on the terrace or under the old copper beech tree in the park. The spacious and comfortable rooms are individually decorated with antique furniture.

Feel like a lord or lady of the manor by putting on a medieval banquet dinner or by renting the entire castle for your own private celebrations or events.

**Location**

Steinakirchen am Forst

**Approach**

At the very heart of Austria, Ernegg Castle is only one hour by car from Vienna and two from Salzburg, and but 10 minutes away from the nearest Autobahn. A1 - Exit YBBS. Its convenient location makes it the ideal point of departure for numerous excursions to places of cultural and historic importance as well as to places of great natural beauty.

**Seillern family**

Grasbergstr 32 · 3140 Pottenbrunn · Austria



The castle's history goes back to the 12th century. Today it is a romantic Baroque castle surrounded by a pond which fish, several different species of ducks and other water fowl call their home. Thoroughbred horses graze in the paddocks of the historic park. The huge ancient trees of the garden give welcome shade and also provide many ideal spots for picnics. Up to 18 people may reside in the castle. The rooms are decorated in the English Country Style and are spacious and comfortable. On the ground floor there is a small entry hall, a large hall with open fireplace, a vestibule, a small salon and a sauna.

**Annual closing**

Open all year  
Contact (+43) 2742 42205

**Facilities | Activities**

Culture activities near St. Pöten;  
Gardens; Walks; Sauna.

**Accommodation**

9 double rooms.  
5 with own bathroom; the remaining 4 double rooms share 3 bathrooms.

**Email** info@schloss-wasserburg.com

**Location**

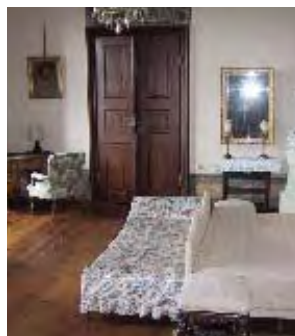
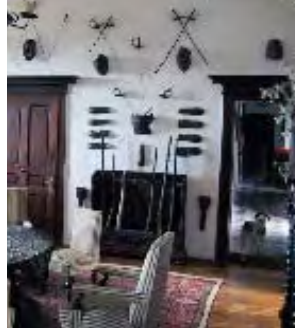
Pottenbrunn (Lower Austria)

**Approach**

Take the A1 - Exit St. Pöten / S33 Exit Pottenbrunn

**Alexander Berger-Almásy**

7434 Bernstein · Schlossweg 1 · Austria

**Annual closing**

Open from end of April to  
end of October  
Contact (+43) 3354 6382

**Facilities | Activities**

Culture; Garden; Thermal baths.

**Accommodation**

4 doublerooms and 6 suites.

**Email** burgbernstein@netway.at

**Location**

Bernstein

**Approach**

Located at 110 km from Vienna, take the A2 - Exit Krumbach/B55 Bernstein



**Nemetz family**

Oberranna · 3622 Mühldorf · Austria



The fortress dates back to the 12th century and was fortified in the 16th century. The castle buildings enclosed by a ring of walls are surrounded by an inner and outer circle of moats. In the 16th of century the castle was rebuilt around a rectangular court with arcades. The chapel, dedicated to St. George, was built and consecrated in the first half of the 12th century and its architecture is important in Austria.

The castle of Oberranna was restored with high technical skill but also under the supervisions of the Austrian Board for the Conservation of Historical Buildings. This construction work, however, was rather difficult as was attempted to keep intact as much of the historical building as possible while providing the house with comfortable and up to date appartements and rooms with kitchenette, shower and WC

**Location**

Spitz

**Approach**

The fortress of Oberranna is situated 5 km north of Spitz on the Danube in the heart of "Wachau valley".

**Annual closing**

May to November  
Contact (+43) 2713 8221

**Facilities | Activities**

Cultural visits (Wachau region)

**Accommodation**

7 appartements (suites)  
4 double rooms  
and 1 single room  
20 beds totally

**Email**

reservierung@burg-oberranna.at

**Annual closing**

Mid-June to mid-September  
Contact (+43) 650 2642722

**Facilities | Activities**

Water sports; Horse riding; Hiking;  
Fishing; Tennis; Golf; Ballooning and  
paragliding; Kneipping.  
Museums; Spas; Animal park; Rustic  
restaurants; Castle Road; Apple Road.

**Accommodation**

2-bedroom apartment with dining  
room, bath and kitchen, sleeping 4.  
1-bedroom apartment with shower  
and kitchen, sleeping 3.

**Email** burg-neuhaus@nusrf.at

**Count and countess Vetter von der Lilie**

Burg Neuhaus · A 8223 Stubenberg am See · Austria



Located on a mountain high above the River Feistritz at the heart of the "Appelland" region in the eastern part of Styria, Neuhaus Castle is offering an unspoilt view over pleasantly warm Lake Stubenberg and the hills beyond. All rooms are south facing. The grace and charm of old furniture are combined with modern comfort providing accommodation for tourists who prefer the unusual to designer hotels. Having stood as a ruin for two centuries, the castle is currently being restored to its original splendor.

**Location**

Vienna 150 Km, Graz 60 Km

**Approach**

From Vienna: A 2 exit 115 (Hartberg), B 54 southbound, 2 Km past Kaindorf turn right to Stubenberg (2h). From Graz: A 2 exit Gleisdorf-West, B 54 northbound, at Hirnsdorf turn left to Stubenberg (50 min).

**Count and Countess Salburg-Falkenstein**

A-4142 Altenhof 1 · Austria



The castle of Altenhof which was mentioned as early as 1196 when it belonged to the Bishops of Passau, is since 1602 (together with the nearby ruins of Falkenstein), in the possession of the Counts of Salburg. The chapel was enlarged after a fire in 1724 and is held to be the largest private church still in use in Austria. The castle is spectacularly located high above the Ranna and the Danube valleys and surrounded by terraced gardens.

Since some 25 years the Family has opened its home to receive guests from all over the world who wish to spend some time in any of the five self-contained apartments or houses where modern comfort and cosiness has been added to manor style and warm hospitality.

**Location**

Altenhof Castle is located in the northern part of Upper-Austria, at the meeting point of Austria, Germany and the Czech Republic.

**Approach**

From Salzburg: A1 Linz, exit Voralpenkreutz A9 direction Passau and again exit Wels Nord/Eferding, then follow sign for Passau via the Danube valley (Donautal), cross the Danube after Wesenufer, direction Hofkirchen; From Vienna: A1 Salzburg, exit Linz/Prag, follow sign for Linz Centre direction Rohrbach B127/B127a Lembach/Hofkirchen.

**Annual closing**

Open all year

Contact (+43) 7285 / 262

**Facilities | Activities**

Renting on short or long term; Guided tours through the castle; Tennis courts (on ground) and golf (5 km); Sport centre and Swimming (1km); Walking in valleys under natural protection (Natura 2000); Bicycling; Horse-riding; Fishing and hunting; Animal park nearby; Boat trips on the Danube and visits to numerous monasteries, castle and ruins in the three-country corner of Austria/Germany/Czech Republic.

**Accommodation**

6 Apartments/houses

Email [info@schloss-altenhof.at](mailto:info@schloss-altenhof.at)**Administrative Commandery Mailberg**

2024 Mailberg 1 · Austria

**Annual closing**

Open all year

Contact (+43) 2943 2694

**Facilities | Activities**

The castle garden with its fish pond is an inviting place of pure relaxation. Wine shop; Event hall and fireplace room, capacity for events of up to 200 persons.

**Accommodation**

4 generous double rooms

2 apartments

Email [mailberg@malteser.at](mailto:mailberg@malteser.at)

Since 1146, and without interruption, the Mailberg Castle has been the property of the Sovereign Order of Malta. According to the principles of the Order, the commandery has served through the centuries as a religious, charitable, military and economic centre. Today it is an agricultural and forestry operation whose vineyards produce the wine of the Order of the Knights of Malta, as they have done for centuries. Up until recent times the area and the castle had been involved again and again in military conflicts; they bear witness to a turbulent history.

**Location**

Mailberg (Lower Austria)

**Approach**

From Vienna A22 and S3 to Hollabrunn then 20 Km to Mailberg B40.