



“Special places to stay”

The clients of Great Houses of Spain come from every part of Spain and from numerous European countries. They find in our houses peace or emotions not too far removed from their own homes. They have the opportunity to discover the different regions of the country based in a home that is an integral part of the history of the area, which assures the guest a warm family reception and service of the highest quality.

CASAS GRANDES DE HISPANIA
Monte Bachao, s/n.
Santa Cristina de Fecha
15898 Santiago de Compostela - SPAIN
Tel (+34) 981 194 118
Fax (+34) 981 19 20 28
Email info@pazosdeg Galicia.com



The establishments associated to Great Houses of Spain, believe tourism to be a new way of getting to know places and cultures, gastronomy and local surrounding countryside. Discovering the richness hidden in the villages and hamlets that are so near yet so far from ones everyday life and making it available to the visitor so that he has a real sense of experiencing it, is the aim of the association.

The clients of Great Houses of Spain come from every part of Spain and from numerous European countries. They find in our houses peace or emotions not too far removed from their own homes. They have the opportunity to discover the different regions of the country based in a home that is an integral part of the history of the area, which assures the guest a warm family reception and service of the highest quality.

Besides this, guests at Great Houses of Spain know they can rely on a large range of open air activities, adventure sports in contact with the environment or a variety of gastronomic, cultural routes making a stay at one of these houses an unforgettable experience.

The majority of its forty associates are to be found in Galicia as its consortium was conceived from the Pazos de Galicia trademark which first promoted the creation of a new Spanish organisation to englobe all the associations dedicated to quality tourism at a national level. With the creation of the new Spanish trademark all those independent establishments found in a historical building in a rural setting with a high level of quality, independent of their title or name or where they are geographically situated, will have a place.

- | | |
|----------------------------------|---------------------------|
| 01 Casa Grande A Cerca | 19 Pazo da Trave |
| 02 Casa Grande da Fervenza | 20 Pazo de Andeade |
| 03 Casa Grande de Cornide | 21 Pazo de Eidian |
| 04 Casa Grande de Soutullo | 22 Pazo de Hermida |
| 05 Casa Grande do Bachao | 23 Pazo de Lestrove |
| 06 Casa Grande do Soxal | 24 Pazo de Sedor |
| 07 Casa Solariega de Cervantes | 25 Pazo de Terrafeita |
| 08 Ferrería de Rugando | 26 Pazo do Castro |
| 09 La Posada del Abad de Ampudia | 27 Pazo do Souto |
| 10 La Posada del Pinar | 28 Rectoral de Anllo |
| 11 Mas Passamaner | 29 Pazo Xan Xordo |
| 12 Monasterio de Aciveiro | 30 Rectoral de Areas |
| 13 O' Prioral | 31 Rectoral de Cines |
| 14 Palacio de Barreiro | 32 Rectoral de Cobres |
| 15 Pazo Almuzara | 33 Rectoral de Fofe |
| 16 Pazo Carrasqueira | 34 Casa Grande de Rosende |
| 17 Pazo da Buzaca | 35 Palacio de Preto |
| 18 Pazo da Touza | |



María José Fernández Padín

Chaguazoso, A Mezquita · Ourense · Spain



In Chaguazoso, in the municipality of A Mezquita, there is an unforgettable spot, the perfect combination of history and nature. The country house, Casa Grande de A Cerca, is surrounded by 5 Ha. of land, with magnificent hundred year old chestnut trees. The house, started building in 1700 and whose last facade dates from 1901, was restored in 2002 and has 1500 m2 of surface - space enough for guests to wander about and relax.

Annual closing:

Open all year

Activities | Facilities:

Horseback riding; Hiking; Bicycle trails; Hill trails; Small or Greater game hunting; River fishing; Drawing room; Cafeteria; Library, 3 Dining rooms; Garden; Swimming Pool; Parking.

Accommodation:

5 double rooms
1 deluxe double room
1 double adapted for handicapped

Email acerca@pazosdegalicia.com**Location**

A Mezquita near Ourense.

Approach

From Madrid, A-52 for Ourense. Exit 120 and follow the O-311 for about 3 Kms to O Chaguazoso.

Norman Sánchez Pérez Orozco

Ctra. Lugo, Páramo, km 11 · O Corgo · Lugo · Spain

**Annual closing:**

Open all year

Activities | Facilities:

Library; Tavern, typical of the region; Swimming pool; Sun loggia; Kitchen garden; Guided tours of the house's ecological museum; Monumental sightseeing; Hiking; Bicycle trips; Water sports

Accommodation:

8 double bedrooms
1 special double bedroom
with en suite bathroom

Email fervenza@pazosdegalicia.com

On the banks of the river Miño, next to a waterfall, we find La Casa Grande da Fervenza, an old XVI C. mill converted into a rural tourism house. The rehabilitation process has preserved the elements true to the style of old Galician houses and its warmth, comfort and careful decoration are outstanding. All this is set in the unique framework of the fervenza (boiling water).

It may take some time to discover all the little secrets of Casa Grande da Fervenza. You'll have to spend time to discover the water from the spring that flows from the tap into the old sink beside the old hearth on the ground floor, or finding out where the old narrow defense windows are located which kept the bandits of yore at bay.

Location

O Corgo near Lugo.

Approach

From Lugo, N-VI for Madrid. After 4 kms in Conturiz, right by hotel Torre de Núñez for Páramo for 11 kms; right at sign for 1 km to hotel.

Javier Goyanes Vilar

Cornide, Calo, TEO · A Coruña · Spain



With more than 200 years of history, Casa Grande de Cornide is a living example of the most traditional Galician architecture, alongside interesting ultramodern elements. Its ample collection of Galician painting could easily qualify it as a small Art gallery museum. The house boasts an 8.000m² garden that encloses such emblematic trees as a leafy Magnolia that has been part of the manor house since it was built.



Annual closing:

from Easter to 30 October

Activities | Facilities:

Living room; Library; Permanent painting exhibition; Swimming pool; Gardens; Wine cellar; Car park; Bicycle routes; Walking trails; Galician, Spanish and European wine tasting.

Accommodation:

3 maisonettes; 1 Guest suite;
8 double bedrooms
En suite bathrooms, TV, telephone

Email cornide@pazosdeg Galicia.com



Location

Teo near Santiago de Compostela.

Approach

From Santiago, N-550 for Pontevedra . There is a sign for Cornide on that road. At the roundabout, turn left.

Benito Vázquez and Gill M. Bird

Soutullo de Abaixo, Coles · Ourense · Spain



Annual closing:

Open all year

Activities | Facilities:

Catamaran trip through the Ribeira Sacra gorge; Monumental and artistic routes; Golf; Horse-riding; Canoeing; Walking tours; Sun loggia; Interior patio; Swimming pool; Tennis court; Gardens with vegetable allotment; Granary barns and stone cross; Parking area.

Accommodation:

8 double centrally heated bedrooms with bathrooms en suite and telephone

Email soutullo@pazosdeg Galicia.com



Soutullo Manor House, a small charming Hotel in an XVIII Century building, is situated within 5 minutes (6 Km) from the old town of Ourense along one of the important Jacobean Pilgrim ways to Santiago, near Oseira monastery where the writer Graham Green used to rest every summer. It is set in a medieval village, surrounded by a 20.000 m² country estate and conserves many original architectural elements from its noble past.

Location

Coles near Ourense.

Approach

From Ourense, N-525 for Santiago to Gastei. Take the CP-6 to A Peroxa; first turning on the right to Soutullo de Abaixo.

Javier Goyanes Vilar

Monte Bachao, s/n. Sta. Cristina de Fecha, Santiago · A Coruña



Casa Grande do Bachao is a group of buildings that is a typical example of XVIII Century Galician architecture with two houses, corn granaries, stone cross, and spacious stone terraces. Situated in the middle of a 14.000m2 estate with direct access to the river Tambre, it is managed by its owner and offers the visitor all the facilities that are demanded in a hotel of high category, without losing its rural family atmosphere.

Annual closing:
Open all year

Activities | Facilities:

Sauna and gymnasium; Library, games room and TV lounge; Guest lounge and areas; Conference room; Swimming pool, Garden; terraces and solarium; Barbecue; Bicycles; Organized nature activities; River fishing; walking tours; Guided tours to Santiago de Compostela

Accommodation:

7 twin bedded rooms; 2 double bedded rooms; 3 single bedrooms

Email bachao@pazosdeg Galicia.com



Location

Santiago de Compostela.

Approach

From Santiago CP-0710, Santa Comba road. Pazo signed on right at 11km milepost before village. Follow road for 5 Km; signed.

Sonia Martínez Llamedo

Soxal, Bragade, Cesuras · A Coruña · Spain



Annual closing:
Open all year

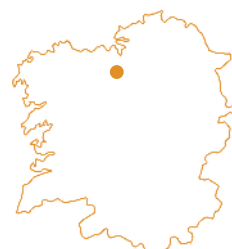
Activities | Facilities:

Dining room; Restaurant, Lounge; Gardens, Vegetable gardens; Parking; Horse's routes; Hiking; Cultural routes

Accommodation:

5 double rooms
2 special double rooms
3 single bedrooms
Ensuite bathrooms

Email soxal@pazosdeg Galicia.com



Casa Grande do Soxal is a tourist complex made up of three old farm labourers' dwellings, a corn granary, a bakers' oven and a barn. The oven has been turned into a wine cellar and the barn into a guest lounge. The main house where the dining room can be found is more than 150 years old. The complex has all the attributes of a first class hotel, still conserving its rural spirit.

Location

Cesuras near A Coruña.

Approach

From Lugo, A-6 for A Coruña. In Betanzos take the C-540 for Melide. Take a right turn to Cesuras and follow signs.

Tito Fernández de Témez

San Román de Cervantes · Cervantes · Lugo · Spain



The Casa Solariega de Cervantes, situated in a municipality of the same name, is a historic building founded in the XVI C. and which has been in constant transformation up to the XVI C. Belonging to one of the oldest and influential families of the region, the Counts of Grajal and the lords of Cervantes, the house preserves original furniture and the aristocratic atmosphere from days gone by. It has a high wall surrounding the property and the family coat of arms on the façade.

You can enjoy the different rooms in the house that invite rest, reading, or relaxing conversation. A walk around the old orchard is in itself enough reason to visit this estate, that is situated in the land of legends: the Os Ancares mountains, where time seems to have stood still.

Location

Cervantes near Lugo.

Approach

From Madrid, A-6 for A Coruña. Exit 451 for Becerreá, Navia de Suarna, Cervantes. The LU-722 takes us to the de San Román de Cervantes cross (7 km). From here we go up the the road to San Román for 5 km.

Annual closing:

Open all year

Activities | Facilities:

Main lounge with marble fireplace; 2 guest lounges; Dining room; Library Restaurant; Garden; Kitchen garden; Parking; Monumental sightseeing routes; Hunting activities; Fishing; Cycling routes; Hiking.

Accommodation:

3 Special double bedrooms
1 Double bedroom
1 Single bedroom

Email cervantes@pazosdeg Galicia.com**Carmen Rodríguez**

Vilarmel, Quiroga · Lugo · Spain

**Annual closing:**

Open all year

Activities | Facilities:

Cafeteria; Restaurant; Lounge with Snooker table; Lounge with library and TV; Lounge with chimney; Games room; Gardens; Vegetable garden; Bicycles; River fishing; Trekking routes; Popular games; Natural swimming pool; Canyon descents; Paragliding.

Accommodation:

6 double rooms
2 suites with tub of hidromasaje

Email rugando@pazosdeg Galicia.com

Ferrería de Rugando was founded in the XVI Century by the monks from the monastery in Samos. Even though work could only be done six months of the year because of a water shortage, great benefits were obtained. When monastery land was sold off it fell into private hands and worked intermittently until 1925. The present house stands on the remains of the ancient monastic blacksmith's together with the adjacent water mill.

Location

Quiroga near Lugo.

Approach

From Ourense, N-120 for O Barco/ Ponferrada. At km 485,5 take a left hand turning to Vilarmel (11 kms).

Familia García Puertas

P. Francisco Martín Gromaz, 12 · 34160 Ampudia - Palencia · Spain



A 17th century building, that in its days was the house of the Abbot of the Abbey of St. Miguel de Ampudia. With its stately porch entrance, it can be found embedded in the principle square, and is considered one of the most emblematic buildings of the town.

Even though there have been various modifications to the building throughout its time, the materials used in its construction are typical of the region. The building has retained practically its entire originality while being completely refurbished. The integration of an atmosphere of the old with the most modern and advanced technology expected of a present day 4 star hotel has been made possible by one of the four brothers, el arquitect Ángel García Puertas.

Location

Ampudia, near Palencia.

Approach

From Airport - Madrid, A-6 for Valladolid. Then, N-60 for Palencia/Burgos. Exit at Cigales for Ampudia.

From Burgos, N-60. Exit Dueñas for Ampudia.

From Palencia, take from Villamartín to Torremormojón. Exit for Ampudia.

Fro Airport, take Fuensaldaña to Cigales and then for Ampudia.

Annual closing:

Open all year

Activities | Facilities:

Meetings & Banquets; Spa - Wellness; Sport Area; Horse Reading; Shooting; Guided Tours

Accommodation:

1 Special Suite del Abad

3 Suites

11 Junior Suites

10 Doubles Rooms

All rooms with bathroom, Air conditioning / Heating, telephone and TV.

Email hotel@casadelabad.com



Ignacio Escribano

Pinar de San Rafael - Pozal de Gallinas · 47450 Valladolid · Spain



Annual closing:

Open all year

Activities | Facilities:

Chimney lounge; Dining room; Conference room; Gardens; Swimming pool; Outdoor; Gallery; Horseback riding; Mountain bikes; Walks in private woods; Pick up mushrooms; Gastronomic and cultural tours

Accommodation:

2 private apartments for 4 people;

1 suite; 14 large double bedrooms;

2 single rooms

Email reservas@laposadadelpinar.com



In the Castilian region of Tierra de Pinares, between the historic villages of Medina del campo and Olmedo lays El Pinar de San Rafael, which spreads across 320 acres. La Posada Real del Pinar is situated in one of its slopes, facing east and is formed by several buildings being the oldest one from the 17th century.

La Posada del Pinar has been carefully conditioned to create a comfortable establishment with cosy bedrooms and wide sitting areas. Apart from the bedrooms and the restaurant service La Posada Real del Pinar offers its guests, it is also and ideal place to celebrate weddings, meetings, parties...The perfect place to taste the varied and appreciated gastronomy of Castilla y León.

Location

Pozal de Gallinas, near Olmedo and Medina del Campo. Valladolid.

Approach

A-6. At km 157, exit for Posada.

The surroundings are still silent and peaceful.

Familia García Puertas

Camí de la Serra, 52 · E-43470 La Selva del Camp · Tarragona · Spain



Mas Passamaner is a five star luxury hotel in Spain. Situated in La Selva del Camp near Tarragona, Mas Passamaner is a modernist building designed by the famous architect Domenech I Montaner and restored into a splendid luxury hotel by the owners of the hotel La Posada Real de la Casa del Abad de Ampudia. Work on the restoration of this 1920's Masia has been carried out by the architect Ángel García Puertas, who is also responsible for the interior design. As you would expect from a five star luxury hotel in Spain, the cuisine is of the very highest quality. Our restaurant "La Gigantea" is run by the chef Joaquín Koerper, whose restaurant "Girasol" in Moraira (Alicante) has two Michelin stars. If you are looking for a charming hotel in Spain for that special luxury break look no further than Mas Passamaner.

Location

La Selva del Camp, near Reus. Tarragona.

Approach

From Reus, exit C-14 for Montblanc. Exit at La Selva del Camp/Constantí for Constantí. After 2.5 km turn right. From Barcelona/Valencia, A-7. Exit 34 for Reus/Airport. Take road C-14 for Montblanc. From Madrid/Basque Country/Lerida, A-2 for Montblanc. Exit 9 and take road C-14 for Reus.

Annual closing:

Open all year

Activities | Facilities:

Rooms for events, banquets or managerial meetings; SPA-Wellness Swimming pool; Gym-Fitness; Tennis Court; Padel Court; Archery; Mountain Bikes; Childrens Area; Naturally Thematic Programmes.

Accommodation:

14 Doubles Superiors
10 Suites
2 Royal Suites with swimming pool

Email hotel@maspassamaner.com**José Manuel Otero**

Santa María de Aciveiro · Forcarei · Pontevedra · Spain

**Annual closing:**

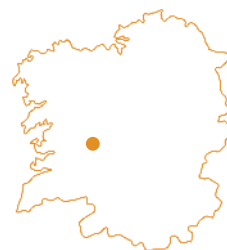
Mid-June to mid-September

Activities | Facilities:

Conference rooms; Guest lounge; Bar cafeteria; Restaurant; Gardens; Terrace; Chapel; Parking; Hiking; Monumental sightseeing routes; Pony trekking; Golf

Accommodation:

9 double rooms ; 4 special rooms
5 triple rooms all with en suite bathrooms, radio, telephone, T.V. and internet connection availability.

Email aciveiro@pazosdeg Galicia.com

The construction of the Santa Maria de Aciveiro Monastery began in the XII C. , on the orders of the Galician King Alfonso VII. Its renovation and subsequent conversion into a hotel has respected to the letter its previous monastic use and history. The monastery building has all the characteristics of its Cistercian past, with the kitchen, refectory, main hall, cells, stables etc; distributed around the cloister.

The Aciveiro Monastery is situated very close to the route of the Lerez bridges and near the environmentally protected zone of the Candan mountain chain. This magnificent situation makes it the perfect base for setting out to follow numerous hiking paths which allow the visitor to contemplate nature in a setting of great artistic and monumental importance.

Location

Forcarei, near Pontevedra

Approach

From Santiago, AP- 53 for Lalin. In Silleda take the PO-201 to Forcarei.

Ana María Amor Meizoso

A Graña, 3 · Callobre · Miño · A Coruña · Spain



We find the charming ancient priory of O' Prioral seven kms after the A-9 motorway enters the municipality of Miño. It is a place brimful of magic, history and beauty and although very well connected to all the important local road networks, it is surrounded by beautiful countryside. When you stay here you have the feeling you have gone back in time as you admire the bedroom furniture, made of noble woods, the lounges with open hearths, casement windows and open air shady patios.

Getting to know the priory is an adventure in itself, owing to the fact that its interior houses some exquisite pieces of furniture belonging to different periods. Its magnificent position, between the sea and the fertile hills crossed by rivers invite the visitor to practise all kinds of sports and leisure activities.

Location

A Graña, near A Coruña.

Approach

C-651 for Miño. Follow sign Ponte do Porco before Miño. Take sign Vilarmajor for 5 kms. Follow Pontedeume sign for approximately ½ km and then take the first left hand turning signposted Graña (very small road) and you will find us at the first house on your right. From Santiago, A-9 for Ferrol. Exit at Miño. Take the C 651 for A Coruña. Follow sign Ponte do Porco before Miño.

Annual closing:

Open all year

Activities | Facilities:

2 lounges; Dining room; Casement windows; Garden terrace with outdoor barbecue area; Patios; Parking; Activities; Pony trekking; Trips by antique coach; Sailing trips; Quad bikes; Paintball; Archery

Accommodation:

5 double bedrooms
1 luxury suite with a stone balcony

Email prioral@pazosdegalia.com**Antonio Troncoso**

A Serra, 6. Vilar de Crecente · Pontevedra · Spain

**Annual closing:**

Open all year

Activities | Facilities:

Conference room; Lounge; Bar; Dining room; Wine cellar and press; Library; Swimming pool; Gardens; Dovecote; Watermill; Parking; Wine and liquor tasting; Adventure sports; Hunting and fishing; Hiking in mountains; Pony trekking; Nature and Cultural routes.

Accommodation:

6 double rooms ; 2 single rooms;
1 suite [5 pax.]

Email barreiro@pazosdegalia.com

The actual Palacio de Barreiro dates from the XVII C and was home to high Galician noble families. Its foundations were built on the ruins of the XIV C Torre do Couto and it was built for defence purposes in the style of a Galician pazo. It was constructed in granite with very thick walls. It has a monumental balustrade, a stone staircase, a slit window for defence, an enclosed courtyard, chapel and battlements and elements that give the enclave its strategic fortresslike character, much appreciated in the times of the Spanish wars.

Location

Vilar de Crecente, near Vigo

Approach

From Vigo, A-52 for Ourense. Exit in A Cañiza to Vilar de Crecente.

Javier Bernárdez

Almuzara, Boborás, O Carballiño · Ourense · Spain



At the end of the XIX C, Perfectino Vietez, a wealthy emigrant who had returned home, built a great house near to the site of the old Almuzara, where he had been born, in the region of O Carballiño. Pazo de Almuzara became an important building, home to noble families and kings, such as Alfonso XIII. It was restored in the XXI C, and it boasts an immense garden, and a spectacular swimming pool.

Annual closing:

Open all year

Activities | Facilities:

Lounge; Conference room; Permanent exhibitions of paintings; Gardens; Swimming pool; Historical artistic routes; Spa routes; Gastronomic routes; River fishing; Hiking

Accommodation:

9 double rooms; 1 suite
En suite bathrooms with hairdryer, heating and TV

Email almuzara@pazosdegalicia.com

**Location**

Boboras, near Ourense.

Approach

From Vigo, A-52 for Ourense. Exit 241 for Carballiño - Pontevedra. Also exit 252 for Ribadavia and carry on to O Carballiño after 5,5 kms on.

Gonzalo Pintos

Carrasqueira, 6. Sisán, Ribadumia · Pontevedra · Spain

**Annual closing:**

Open all year

Activities | Facilities:

Cafeteria; Lounge room; Library; Laundry; Swimming pool; Gardens; Parking; Cultural routes; Wine routes; Ornithological routes; Golf course

Accommodation:

2 double bedded rooms
3 double rooms in the first floor
4 double rooms in the attic
En suite bathrooms, central heating, TV

Email carrasqueira@pazosdegalicia.com



In the Rías Baixas, in the very centre of Valle de Salnes, Pazo de Carrasqueira can be found. Taking into account its thick walls and the layout, we are led to believe that it was constructed at the dawn of the XVIII Century. At that time, as various documents relating to local taxes of the time demonstrate, the manor house was an active presence in the neighbourhood of the parish of Sisán.

Location

Ribadumia, near Pontevedra.

Approach

From Pontevedra, AP-9 for Santiago. Exit 119 for Cambados / Sanxenxo / O Grove. Take the VRG -4.1, exit PO 300, carry on to Sisán-Ribadumia.

Enrique Varela

San Lourenzo, 36, Moraña · Pontevedra · Spain



Since its construction, in the XVII Century, Pazo da Buzaca has belonged to the family and lineage of the Varelas. The house has a main door above which the family coat of arms is on view, carved in stone from the XVIII Century. The complex, surrounded by a stout stone wall, boasts the main building, divided into mansion house, enclosed veranda, and hunting lodge (the previous home of the caretakers); two corn granaries, turret, dovecote and a small chapel.



Annual closing:
Open all year

Activities | Facilities:

Main dining room with galeria; Noble dinning room; Library; Lounge; 2 corn barns; Dovecote; Chapel; Swimming pool; Gardens; Parking; Popular games as petanque, croquet; Hiking; Waters sports (in the near reservoir); Cultural routes; Gastronomic routes

Accommodation:

13 double rooms
1 apartment for 4 people

Email buzaca@pazosdeg Galicia.com

**Location**

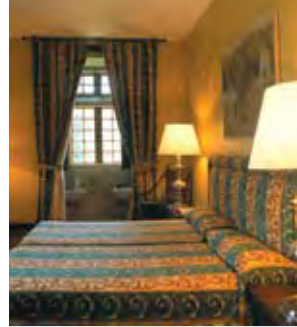
Moraña, near Pontevedra.

Approach

From Santiago, A-9 for Pontevedra. Exit for La Estrada. After 2 Km turn right towards Moraña [4 Km] - Campo Lameiro. After Moraña, at 4 Km turn right and take a right hand turn on a path that descends 800 m.

Betty Lepina

Rúa dos Pazos, 119, Camos · Nigrán · Pontevedra · Spain



Annual closing:
Open all year

Activities | Facilities:

2 Conference rooms; Bar; Dining room; Library; Guest lounge; Gardens; Vegetable garden; Marquee for 300 people with heating; Boat trips; Catamaran; Adventure sports; Tourist routes

Accommodation:

5 double bedded rooms
3 twin bedded rooms
1 special double bedroom
En suite bathrooms, telephone

Email touza@pazosdeg Galicia.com



Pazo da Touza is one of the grandest and most unique manor houses of Galician Architecture. The entrance way with its coat of arms, the human figures and lion heads that protect the estate, give one the impression of entering another world and another time. Erected in the XVI Century and restored with an air of the baroque in the XVIII Century. Its battlements, balustrade and magnificent gardens are witnesses to a splendid past that has been prolonged up to the present day.

Location

Nigrán

Approach

From Vigo, C-550 for Baiona. In Nigrán, take the PO-332 for Camos.

Fina Ramallal

Galdo, Viveiro · Lugo · Spain



The original tower of the Pazo dates from the XV Century and is perfectly conserved. The construction is in a U shape and boasts an interior patio, a walled estate and a garden. Outside the walled enclosure, the visitor can find a wood with vegetation indigenous to the area. Each of the rooms is named after one of the family ancestors or a person of noble ranking from the history of Viveiro, that was somehow linked to the manor house.

Annual closing:
Open all year

Activities | Facilities:

Restaurant; 2 libraries; Conference room; Snooker table; Exhibition room; Sauna; Gymnasium; Local food shop; Swimming pool; Gardens; Picnic area; Tennis court; Vegetable garden; Parking; Cycle and walking tours; Hiking; Boat trip in the river Landro; Surfboards

Accommodation:

2 suites; 2 special double rooms;
14 double rooms

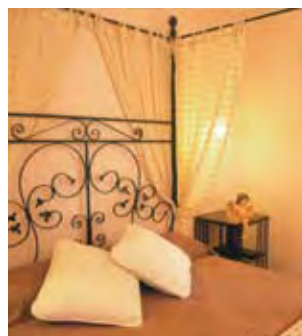
Email travel@pazosdeg Galicia.com

**Location**

Viveiro, near Lugo.

Approach

From N-642 to Viveiro, C-640, Lugo road. After 2 kms, Galdo signed to right. Pazo on right after village.



Annual closing:
Open all year

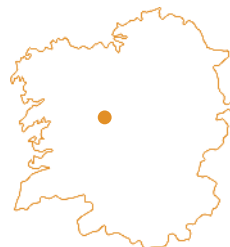
Activities | Facilities:

Restaurant; Dining room and cafeteria for guests; Library; Guest lounge; Chapel/Oratory; Centenary oak wood; Gardens; Vegetable garden; Corn granary; Dovecote; Parking; Hiking; Mountain bike; Visit to farms and cheese factory; Horse routes ;Rafting

Accommodation:

8 double rooms
1 special double room with chimney

Email andeade@pazosdeg Galicia.com

**Elena Vázquez López**

Casa Grande, 1, Touro · A Coruña · Spain



Pazo de Andeade was constructed at the beginning of the XVIII Century, and restored in 1995 with original high quality materials. Beside the respect paid to the original features of the main building the complex conserves all the elementary characteristics of Galician Architecture. The corn granary, the dovecote and the chapel- that boasts an altarpiece crafted by the Compostelan master woodcarvers from the age that the house was constructed- are proof of that.

Location

Touro, near Santiago.

Approach

From Santiago, N-547 for Arzúa / Lugo. In Santa Irene take the turn off to Portodemouros. Follow 9 kms.

Nicolás Rodríguez

Eidián, Agolada · Pontevedra · Spain



The Pazo de Eidián, is a typical Galician country manor house dating from the late 16th century, which underwent partial transformation with the addition of defensive structures during the 1st Carlist war. It was the ancestral home of the López de Basadre family, whose coat-of-arms presides over the gateway. This stately home was built on land belonging to the Knights-Templar, from whose times only the village chapel remains.

After the recent renovation, all of the old flavour of the manor house has been carefully harmonised with period furniture.

Annual closing:

Open all year

Activities | Facilities:

Restaurant; Dining room; cafeteria; Reading room; TV room, Gardens ; 100 year old Raised Granary and "Eira"; Patio and terrace; Bicycles; Hiking; Guided Excursions; Horse-riding trails, Quads, Rafting, Bungee jumping; Hunting; River fishing; Kayaking

Accommodation:

10 Double Rooms
2 special double rooms (suites)

Email eidian@pazosdegalicia.com

**Location**

Agolada, near Pontevedra.

Approach

From Santiago de Compostela, AP- 53 for Lalín. Take the road to Lugo. In Agolada, turn left to Melide for Berredo. You can also take the N-547 to Lugo. In Melide turn right on to the Agolada road.

Marina Vázquez

Lestrove. Dodro · A Coruña · Spain

**Annual closing:**

Open all year

Activities | Facilities:

2 Drawing rooms; Dining room; Library; Grounds/Garden ; Parking; Hiking; Rafting; Kayaking; Quads; Golf; River fishing

Accommodation:

5 double rooms
1 deluxe double room
Telephone and TV in very room

Email hermida@pazosdegalicia.com



In the 10th C. the Towers of Lestrove were the most visible part of the defence bastion in the Ría de Arousa and the origin of the Pazo de Hermida, a manor house with a coat of arms belonging to Galician nobility. Rosalía de Castro would go there and spend long periods of time -in fact two of this poet's children were born there. The Pazo was also a silent witness to the signing of the Pact of Lestrove, which established the constitution of the Republican Federation of Galicia in March, 1930.

Location

Dodro, near Santiago.

Approach

From Santiago de Compostela, AP-9 for Pontevedra. Exit 93 and take the VGR 1-1. We can also take N-550 from Santiago to Padrón. Turn off towards Dodro and follow to Lestrove.

José Manuel Otero

Lestrove. Dodro · A Coruña · Spain



The Pazo de Lestrove which was constructed in the XVI C. as a holiday home to the Archbishops of Santiago de Compostela has gone through much reconstruction work but the present style belongs to the Baroque period. In the entrance patio there is an outstanding monumental fountain, with a main basin and three ascending smaller basins, crowned by a statue of the figure of St James the pilgrim. The chapel which can be seen by its bell tower rises above the roof and is dedicated to the Guardian Angel.

The nearby town of Padron invites the visitor to follow the Rosalia de Castro route to find traces of the famous local poetess and her surroundings; or to discover the Home/museum of Camilo Jose Cela. The proximity of the tranquil Arousa inlet allows you to practise water sports or to enjoy its magnificent countryside.

Location

Dodro, near Santiago.

Approach

From Santiago de Compostela, AP-9 towards Pontevedra. Exit 93 and take the VGR 1-1. We can also take N-550 from Santiago to Padrón. Turn off towards Dodro and follow to Lestrove.

Annual closing

Open all year

Facilities | Activities

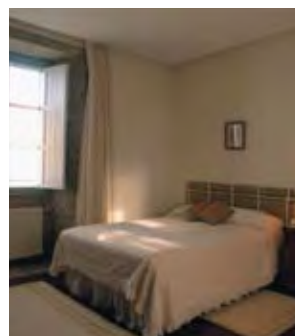
Restaurant; Dining room; Guest lounges; WI-FI zone; Chapel; Baroque fountain; Patios; Swimming pool; Gardens; Bicycles; Hiking; Water sports; Rosalia de Castro routes; Trips to Padron and Villagarcia; Golf

Accommodation

20 double bedrooms
6 individual bedrooms

Email lestrove@pazosdegalicia.com**Joaquín Saavedra**

Sedor, A Castañeda, Arzúa · A Coruña · Spain

**Annual closing**

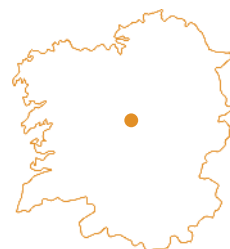
Open all year

Facilities | Activities

Conference room; Living room; Lounge; Lunch facilities for guests; Swimming pool; Paddle tennis court; Gardens; Vegetable garden; Car park; Bicycles; Mushroom gathering; River fishing; Hunting; Walking trails; Popular traditional games; Paddle tennis; Routes along the Santiago Pilgrims' way

Accommodation

7 double bedrooms

Email sedor@pazosdegalicia.com

Pazo de Sedor is a XVII Century building, founded by Francisco Gonzalez do Vilar, a Fonseca resident, a lawyer of the Royal Magistrates Court of the Kingdom of Galicia and a war prosecutor of the time. It is situated only 20 minutes from Santiago, in a region well known for its rural landscapes and agricultural production. The first feature to catch the eye of the guest on the main façade is the balcony that runs from one side to the other and its great baroque chimney that crowns the roof. Other notable characteristics are the originality of the main staircase and another smaller one that is "entre muros".

Location

Arzúa, near Santiago.

Approach

From Lugo N-540, then N-547 for Santiago. 400 m past km 57 marker, right to Pazo.

Manuel Fernández Gómez

O Pacio, s/n. Trabada · Lugo · Spain



Surrounded by a huge 30 Hec estate of meadows and woods, the tower and the Pazo of Terrafeita were constructed in the XVI Century by Don Juan Pardo de Aguilar, a Galician nobleman from one of the most influential families of Mondoñedo. On the main facade between the first and second floor of the tower, the family coat of arms stands out. What was once a stronghold is today a perfectly restored, relaxing place to stay.



Annual closing

Open all year

Facilities | Activities

Dining room with chimney; Conference room; Guest lounge; Games room; Gardens; Vegetable garden; Heated swimming pool; Parking; Bicycle routes; Hiking; Horses; Adventure sports; Gastronomic routes

Accommodation

10 double rooms
En suite bathrooms, telephone, satellite TV and heating

Email terrafeita@pazosdeg Galicia.com



Location

Trabada, near Lugo

Approach

Take the N-634 from Lugo towards Ribadeo. In Lourenzá turn off to Trabada (11km).

Montse Rodríguez

O Castro, O Barco de Valdeorras · Ourense · Spain



Annual closing

Open all year

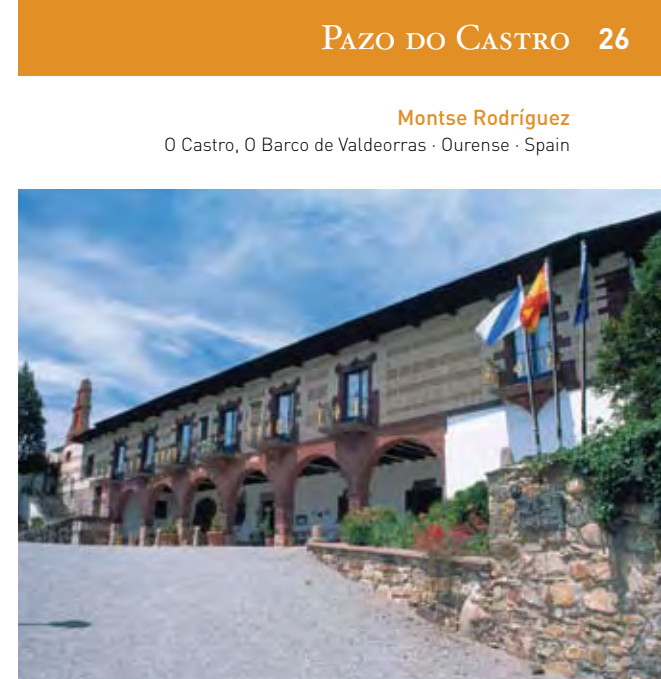
Facilities | Activities

Dining rooms; Conference room; Library; Carriage museum; Lounges with antiques; Indoor pool; Sauna; Chapel; Parking; Children's games; gardens; Tennis court; Bicycles; Hiking; Canoeing; Catamaran routes; Paragliding; Two-seater plane; Quads routes; Speleology

Accommodation

14 double rooms; 2 suites;
2 double rooms with Jacuzzi tub

Email castro@pazosdeg Galicia.com



Pazo do Castro takes its name from the village in which it is situated and which was the most important town in medieval Valdeorras. Don Pedro de Losada y Quiroga ordered the house and its chapel to be built in the year 1630. More than three centuries later, the house, now declared a building of artistic historical interest, has been restored for tourism with all the comforts of a luxury hotel.

Location

O Barco de Valdeorras, near Ourense.

Approach

From Ourense take the N-120 towards Ponferrada. Leave this road on entering O Barco from the west.

Carlos Taibo

A Torre, 1. Sísamo. Carballo · A Coruña · Spain



While he was enlarging a tower erected upon a thousand year old celtic hill settlement, one of the inquisitors Manuel Posse de Sotto built Pazo de Souto in feudal times. Years later it became the property of the Marquises of Montenegro only to be abandoned at the beginning of the XX Century. It has been restored by an emigrant who returned to his native land wanting to give it back all its original splendour has turned it into a rural tourism house with all the modern comforts one would require.

Annual closing

Open all year

Facilities | Activities

Restaurant; Cafeteria; Lounge with chimney; Library; Sitting room; Games room; Gardens; Vegetable garden; Parking; Bicycles; Hiking; Tourist routes; Pony trekking; Adventure sports

Accommodation

3 double rooms
7 double rooms with Jacuzzi tubs
1 room with water-bed

Email souto@pazosdeg Galicia.com**Location**

Carballo, near A Coruña.

Approach

From Santiago C-545 for Santa Comba and Carballo; after 27 km through Carballo for Malpica; left 100 m after BP petrol station, for Sísamo. Pazo 2.5 km beyond, on left after church.

Cristina Goyanes

Mogueira, 68. Anllo, Sober · Lugo · Spain

**Annual closing**

Open all year

Facilities | Activities

Dining room; Lounge; Chapel; Gardens; Vegetable garden; Parking. Sports facilities linked to the house (3 km. away): swimming pool, tennis court, football pitch; Nature routes, Romanesque routes, Visits to wine cellars and vineyards

Accommodation

9 double rooms
En suite bathrooms and TV

Email anllo@pazosdeg Galicia.com

Rectoral de Anllo is a XVIII Century construction, which owing to its fine features owes more to rural Italian Renaissance than the Galician architecture of the period. It is situated quite a distance away from the church and so this suggests that it wasn't constructed so much as a rectory but as a donation by the nobles of the day. It has been beautifully restored and at the moment contains paintings by Castinandi, who was a Galician painter of the time.

Location

Sober, near Ourense.

Approach

Leave the N-120 at km. 530 and take the road to Sober. Follow signs.

Alfonso Barco Pérez

Xan Xordo, 6. Lavacolla, Santiago · A Coruña · Spain



The house is situated in the heart of the Santiago Region, 7 km from the centre of the city and only 3 km from Lavacolla Airport. The last stage of the most well known route (The French Route) of the Santiago Way is only 1 km away from the house. Areas of great natural beauty and one of the most important north peninsular cultural and tourist sites are within easy reach of the visitors to this magnificent Pazo.

Annual closing
Open all year

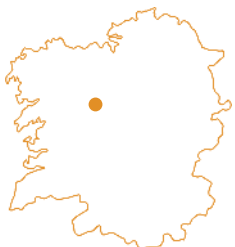
Facilities | Activities

Disabled access; Dining room; Conference room; Lounge; A working water mill; Garden; Vegetable garden, Parking; Bicycles; You can participate in farming; Hiking; River fishing

Accommodation

9 double bedrooms
1 special double room
Heating, en suite bathrooms, telephone, satellite and Canal + TV, mini-bar

Email xanxordo@pazosdeg Galicia.com

**Location**

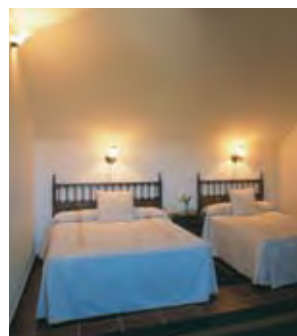
Santiago de Compostela.

Approach

From Santiago, take the N-634 towards Lavacolla airport. Alter San Marcos, take left.

José Antonio Lago Rodríguez

Regueiro, s/n. Areas, Tui · Pontevedra · Spain



Annual closing
Open all year

Facilities | Activities

Dining room; Kitchen facility available, Lounge room, Conference room; Gardens; Vegetable Garden; Parking; Cultural routes; Hiking

Accommodation

4 twin bedded rooms
3 double bedded rooms
Central heating, en suite bathrooms, TV and telephone

Email areas@pazosdeg Galicia.com



Built at the beginning of the XIX Century, in 1831, the Rectoral de Areas was home to the abbots who presided over the parish of Santa Mariña de Areas a few kilometres from Tui. Situated next to the church, more than a Century a half later, the house lost its religious nature and after a careful restoration, which has conserved its original architecture, was transformed into an inn.

Location

Tui, near Vigo.

Approach

From Vigo, follow the AP-9. Exit to the A-55 towards Tui South / Portugal. Then take exit 172 (Tui, A Guarda, O Rosal). Follow PO-552 towards Santa Mariña de Areas.

José Luís Saavedra

Cines, Oza dos Ríos · A Coruña · Spain



The Rectoral de Cines was a medieval convent with a small hermitage, founded in the year 911. Centuries later in the 11th-12th C. a Gothic church in honour of St. Nicholas was built on the site. The Rectory and the Church make up an architectural ensemble of enormous historic and artistic value which has been restored to offer a warm and friendly atmosphere. The original masonry, wooden beams and roof have been preserved and combined with modern, comfortable furniture.

Location

Oza dos Ríos, near A Coruña.

Approach

From Santiago, A-9 for A Coruña. Exit 16 for A-6 towards Lugo/Madrid. Exit 565 to C-540 towards Oza dos Ríos / Curtis. From Lugo/ Madrid, A-6 for A Coruña. Exit 565.



Annual closing

Open all year

Facilities | Activities

Drawing room; Library Recreation room; Private dining room; Terrace with bar service; Sauna; Swimming pool; Gymnasium; Parking; Bicycles; Hiking; Kayaking; Fishing; Horses; Bungee jumping; Huntin; Quads

Accommodation

9 double rooms; 1 deluxe room with a Jacuzzi; 1 room with a living room and separate entrance; 1 apartment

Email cines@pazosdeg Galicia.com



Juan Carlos y Randi Madriñán

San Adrián de Cobres, Vilaboa · Pontevedra · Spain



Annual closing

Open all year

Facilities | Activities

Granary room; Guest lounges; Library; Bar; Chapel; Swimming pool; Barbecue; Gardens; Parking; Walking routes, pony trekking, bicycle; tracks; Dolmen routes; Romanesque Architecture in the Morrazo region; Fishing; Wind surfing; Snorkelling

Accommodation

8 double centrally heated bedrooms with bathrooms en suite, telephone,TV

Email cobres@pazosdeg Galicia.com



Rectoral de Cobres, an old rectory which dates from 1729 was built in the parish of San Adrian de Cobres on a hill with a magnificent view of the Vigo Estuary. It has been recently restored into a charming monumental hotel, which besides having excellent sea views on practically all sides, boasts a spectacular 150 m2 granary adapted for conferences and celebrations.

Location

Vilaboa, near Vigo and Pontevedra.

Approach

From Pontevedra, A-9 for Vigo. Exit 146 for Cangas. After toll, left following signs for Vilaboa and Cobres. 2 Km from junc., at km 8 marker, take track on left. 100 m from road.

Amador Barcia

Aldea de Arriba, 13, Fofe, Covelo · Pontevedra · Spain



The present Rectoral de Fofe was built on the ruins of the original house belonging to the clergy of the time and constructed in the XVII C. According to the inscription that appears on the exterior wall of the tower, that and the enclosing wall were put up in the year 1830. The restoration work to allow for its function as a rural hotel was carried out inside the walls of the original building and has been perfectly adapted to the demands of the present day.

Location

Covelo, near Pontevedra.

Approach

From Vigo, A-52 for Madrid. Exit 252 to Paraños. Take service road into village and on to Covelo, through Maceira to Fofe. Hotel on right at village entrance.

**Annual closing**

Open all year

Facilities | Activities

Lounge with chimney; Library, Dining room; Bar; Gardens; Vegetable garden; Swimming pool; Parking; Bicycles; River or sea fishing; Hunting; Hiking; Tourist routes

Accommodation

4 double rooms
1 special double room
1 single room
En suite bathrooms, telephone and TV

Email fofe@pazosdeg Galicia.com**Manuel Viéitez**

Rosende, Sober · Lugo · Spain

**Annual closing**

Open all year

Facilities | Activities

Meeting rooms; Dining halls; Swimming pool, tennis courts, football field; Gardens; Vineyards; Marquee for banquets; Trekking; Boat trips along the Canyons of the River Sil; Canoeing; River fishing; Golf; Horse riding

Accommodation

6 Double rooms
3 Single rooms
En suite bathrooms, TV, telephone

Email rosende@pazosdeg Galicia.com

The manor was built in 1511 by the Díaz Varela family. Carlos Recarey Díaz Varela upheld the Viceroyalty of Mexico, later returning to his homeland. It was he who undertook the extension of the original building towards the end of the 18th century. The decoration of the chapel and drawing rooms, with unique frescos painted by Juan Bernardo de Castinande, dates back to this period.

The manor is known as "The Misses' House" throughout the area due to the sisters who lived there during the middle of the last century and who were the last of the Díaz Varelans to live there.

Location

Sober, near Ourense.

Approach

From Ourense, N-120 for Monforte. At km 50, exit for Canaval. Right at 1st T-junc., following signs for house. Casa Grande 3 km down road.

Alicia Álvarez

Prelo s/n, 33728 Boal · Asturias · Spain



Located in the borough of Boal in the Western part of Asturias, the Manor of Prelo boasts magnificent views on the Bobia and Carondio mountain ranges, as well as on the Navia River Valley. Although it was classified as a historical landmark back in 1982, the Palacio of the Miranda and the Chapel of Prelo were absolutely ruined when they were acquired by their present owner. Over a five year period, Marion Tiemeijer and Antonio Gómez Mendoza undertook a careful restoration work to recreate its original aspect. Nowadays the palacio houses a cosy small country hotel which is ideal for a peace and tranquility therapy which will make you forget the stress of urban life, for family or friends get-togethers or even for business seminars in an exclusive setting of luxury. Alicia Álvarez, the hotel manager, lovingly looks after her guests to fulfil their least requirements.

Location

Boal, near Oviedo.

Approach

From Madrid, A-VI for Benavente. Take A-66 for Oviedo. From Oviedo, follow directions Cantabria or Basque Country. From Galicia, N-634 from Ribadeo to Navia. Take AS-12 for Boal and Grandas de Salime to San Luis (about 26 km). Then, follow directions for Asturias, Cantabria or Basque Country.

Annual closing

Open all year

Facilities | Activities

Chimney lounge; Library; Chapel; Billiards room; Home Cinema; High speed internet connection; Gardens; Sulphurous waters; Visit the castrum; Archeological remains; Hiking along footpaths; Canoeing trip; Hunt

Accommodation

3 suites with own private sitting room
2 large double bedrooms

Email info@palaciodeprelo.com