

Maria Octávia Paiva Paulo Cardoso Guedes da Silva

Rua António Calado, 40 · 2815 – 729 Sobreda · Portugal



The house of the Quinta de Vale Mourelos is located in the south bank of the river Tejo, next to the main road from Lisbon, in the area of Caparica - this designation, according to the legend, comes from the finding of a cloak ("Capa") full of gold coins ("Rica"=Rich) near to the city, right next to the beaches and golf fields of "Costa Azul". This house has its origins in the 18th century, but it was remodelled while still according to the original design in order to offer its visitors an enjoyable stay. Here, guests can choose between the cool water of the swimming pool or feel the sand and the sea in the nice beaches of the region.

Location

Monte da Caparica

Approach

From Lisbon: Find the signs A2 Sul, Setúbal or Caparica and follow carefully. You will eventually cross the suspension bridge (Ponte 25 de Abril). After the bridge, take the first exit to Caparica and stay in the same lane. Pass the BP service station and turn off the motorway at the sign "Sobreda". At the top of the slip road, turn left and follow the road down to a roundabout. Go almost all the way round and turn off. On your left is a "no through road" sign. Go along this approx. 250m and the house gates are on your left.

**Lúcia Josefina de Castro Girão**

Cambres · 5100-426 Peso da Régua · Portugal

**Casa Antiga B**

From April to October

Facilities | Activities

Chapel; Meals available on request; Gardens; River nearby; Walking; Wine Tasting

Accommodation

3 Bedrooms (2 Doubles and 1 Twin)

Email varais@solaresdeportugal.pt

Set in the heart of the Port wine region, Casa de Varais overlooks the enchanting Douro valley, with its typical rock-walled terraces covered with green vineyards. Although the present building dates from the early 18th Century, the original construction is believed to be from the 15th Century. Varais has witnessed a somewhat turbulent history, having been invaded by Napoleonic troops in 1808 and almost completely destroyed by fire in 1940, colocar uma vírgula e acrescentar: making it necessary to reconstruct it, but still keeping the original architectural lines. Today however, visitors will encounter a splendid mansion in a tranquil setting.

Location

Cambres, 1,5 km from Peso da Régua.

Approach

From Porto Airport: Take the A4 to Amarante. Once in Amarante take the signs to Mesão Frio, N 101. At Mesão Frio take the N 108 to Peso da Régua. In Peso da Régua cross over the river and then a little further after crossing another bridge, turn right into Cambres and 200m after you will see the distinctive rose coloured house on the left.



Inácio Barreto Caldas da Costa

Várzea - Beiral do Lima · 4990-545 Ponte de Lima · Portugal



This pretty manor house is located in the peaceful village of Beiral, halfway between the towns of Ponte de Lima and Ponte da Barca, with easy access and beautiful panoramic views. It maintains an ancient tradition of hospitality, having welcomed such special guests as the Archbishop of Braga during his church visits. The house has been in the same family at least since the 16th century, having been severely modified in the 18th century. The interior of the house was totally restored and constructed a small wine cellar in the ground floor, to provide visits for taste wines of the region.

Location

Beiral do Lima, 10 km from Ponte de Lima.

Approach

From Porto Airport: Take the motorway A3 to Braga/Valença. At the km76 leave the motorway in the exit signpost Ponte da Barca/Ponte de Lima/Arco de Valdevez. After paying the toll, turn in direction to Ponte da Barca. Follow this road for approx. 7km you will come into the village of São Martinho da Gandra (there is a petrol station at the beginning of this village). After the square on your right you will see a turning right to Beiral do Lima - turn right here. Follow this road, winding upwards past a church (bear right), and approx. 100m you will find the Cruzeiro (cross stone) turn left and go by the lane and at the end you will arrive to Casa da Várzea.

**Casa Antiga B**

Open all year

Facilities | Activities

Chapel; Meals available on request; Gardens; Seminars; Swimming pool; Walking; Wine Tasting

Accommodation

6 Bedrooms (2 Doubles and 4 Twins)

Email vilarinho@solaresdeportugal.pt**Cristina Filomena Olazabal Van Zeller**

5060-630 Vilarinho de São Romão · Sabrosa · Portugal



The Casa Vilarinho de S. Romão, built during the seventeenth century and was much improved a century later. The chapel was built much earlier and was consecrated in 1462. It is distinguished by its prominent placement and harmonious architecture, which was planned to enable a balanced and enjoyable existence. Here, the charms of the past meet the comfort of the present and come together to allow for a pleasant stay in fine wine country of Douro, just a few minutes from some of region most notable landmarks. Casa de Vilarinho de São Romão has been mentioned by numberless authors. They refer to the charm of the surroundings, and to the agronomical importance.

Location

Vilarinho de São Romão, 3 km from Sabrosa.

Approach

From Porto: Follow the A4/IP4 to Vila Real. In Vila Real take the EN 322 and drive 19 km to Sabrosa. When entering Sabrosa, turn right to the EN 323 on the way to Pinhão - at 3 km distance, is Vilarinho de S. Romão. The House, which got the same name as the village, stands out on the left with its ancient chapel and imposing gate.

João Pedro Malheiro Faria Barbosa

Correlhã · 4990-297 Ponte de Lima · Portugal



Quinta da Agra is a building with foundation before Sec. XVI. A gate in the stone wall gives access to the two houses which are restored with good taste and comfort.

The owner dedicated 10 years returning the architecture to its original state, recovering the roofs, the guillotine windows, the balconies in quarry, and leisure retreats.

On this Farm all of the restoration details were taken care, from the involving area of the house, to the century old olive trees, the picadors and the stables, to the small lakes for the fishing enthusiasts.

Quinta e Herdade C

Open all year

Facilities | Activities

Billiards; Chapel; Meals available on request; Fishing; Gardens; Swimming pool; Walking; Wine Tasting

Accommodation

6 Bedrooms
(3 Double and 3 Twins)

Email agra@solaresdeportugal.pt

Location

Correlhã, 2 km from Ponte de Lima.

Approach

From Oporto Airport: Take the motorway A3 to Braga/Valença. After 76km leave the motorway at the exit marked Ponte de Lima (junction 11). Turn right for Ponte de Lima and go across two roundabouts. At the third, go across and follow the N306 to Freixo. After around 900m there is a sign for "Freixo 14km". At this point, fork right and continue for another 500m. The gate to Quinta da Agra is on the right.

**Albano Paganini da Costa Lobo**

Timpeira · 5000-419 Vila Real · Portugal

**Quinta e Herdade C**

Open all year

Facilities | Activities

Meals available on request; Gardens; River nearby; Swimming pool; Walking

Accommodation

4 Bedrooms (2 Doubles and 2 Twins)
3 Apartments for 4 people

Email

agricolalevada@solaresdeportugal.pt

Casa Agrícola da Levada is located at Vila Real. The property has 10 ha, that provides peace and tranquillity to the guests. Recently restored, the Casa Agrícola has been a farmhouse since 1922. It was designed by Raul Lino, a well known Portuguese architect. 100m from the river Corgo, this estate breeds animals including wild boar. The gardens are very pleasant to walk in and the owners produce their own bread, honey, jam and sausages.

Location

Timpeira, 1,5 km from Vila Real.

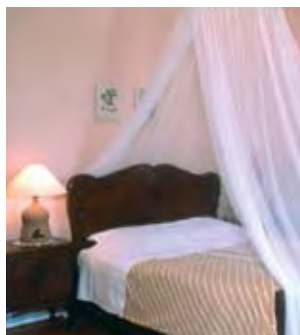
Approach

From Porto Airport: From airport take the A4 to Amarante / Vila Real. Once in Amarante continue in the IP4 to Vila Real. Exit the IP4 in the junction signposted Vila Real - Norte and continue following the directions of Vila Real - Centro. Then, in the BP petrol station, turn left in direction of Sabrosa. After turn left again following the signpost to Casa Agrícola da Levada and you will find the house. Please note that from the IP4 to the house it's about 1,5 km.



Hubertus Lenders Biemond

Sertã · 6100-459 Nespéral · Portugal



This lovely country house dates back to the 18th Century. It's situated in the centre of Portugal within the beautiful region of Sertã. It's a typical Portuguese Quinta with rural traditions, surrounded by vines, fruit trees and a wood. It's an ideal place for relaxation, breathing in the pure mountain air with walks along the rivers and nearby reservoirs. The building offers comfort and functionality, allowing to the guests a nice stay full of tranquillity.

Quinta e Herdade C

Open all year
(except December and January)

Facilities | Activities

Gardens; Horse Ridding; Indoor swimming pool; Sauna; Walking; Wine Tasting

Accommodation

4 Double Bedrooms

Email bonjardim@solaresdeportugal.pt

Location

Nespéral, 8 km from Sertã.

Approach

From Lisbon: Take the motorway A1 to North/Porto. Leave the A1 in "Pombal" and follow the IC8 road in direction to Castelo Branco, turning off for Sertã. In Sertã take the road N238 leading to Tomar. Before Cernache do Bonjardim, turn left signposted Nespéral - Turismo Rural, then follow the signs and you will find the house 1,5 km ahead.

**Maria Fernanda Sousa Carvalho Martins**

S. João da Ribeira · 4990-408 Ponte de Lima · Portugal

**Quinta e Herdade C**

Open from May to October

Facilities | Activities

Gardens; Jogging course; River nearby; Swimming pool; Walking

Accommodation

2 Apartments for 2 people
2 Apartments for 4 people

Email

quintaaldeia@solaresdeportugal.pt

Visitors in search of a restful, rural setting will not be disappointed at Quinta da Aldeia. Guests may unwind in this rustic cottage and in the seclusion of the surrounding farmland, situated next to a 17th Century mansion.

The main building is a small manor house located at Lugar de Castro that offers calm and privacy. The apartments are decorated with rustic furniture, according to the healthy farm life. The house is 2km from Ponte de Lima, allowing nice visits to the village.

Location

Ribeira, 2 km from Ponte de Lima.

Approach

From Oporto Airport: Take the motorway A3 to Braga/Valença. At the km 76 leave the motorway in the exit signposted Ponte da Barca/Ponte de Lima. After paying the toll, turn right to Ponte de Lima. 1 km after take the road signposted "Aldeia" on the right. Follow this lane for 250m and you will find the house on the left hand side.



Maria Francisca Pessanha Pinto Machado

5340-031 Arcas · Macedo de Cavaleiros · Portugal



This estate, situated in Arcas near Macedo de Cavaleiros, is a magnificent example of a house built in the 17th and 18th Century. It belongs to the Pessanha family, descendants of a Portuguese teacher who specialised in navigation, during the period of King Dinis (1261-1325). Within the house, particularly the chapel, there is a traditional welcoming atmosphere. An interesting attraction for the guests here is the opportunity to do some traditional farming and the option to use the hunting area. Also one can try the delicious gastronomy of the Tras-os-Montes Region. Within the neighbouring area of Barragem do Azibo and the Montesinho Natural Park, there is a village called França which offers horse riding lessons.

Location

Arcas, 25 km from Macedo de Cavaleiros.

Approach

From Porto Airport: Take the A4 to Amarante. Then from Amarante take the IP 4 towards Bragança. Exit the IP4 in the second sign to Macedo de Cavaleiros. You will cross a bridge and then take the EN15 road (parallel to the IP4). After only 800m, turn left in the direction of Valheis. After 1500m, turn left again at the sign to Ferreira and Arcas. After 13 km, you will drive into Arcas, just after the road branches right to Torre de D. Chama.

**Luis Mendes Norton de Matos**

Queijada · 4990-685 Ponte de Lima · Portugal

**Quinta e Herdade B**

Open all year

Facilities | Activities

Chapel; Meals available on request; Gardens; Seminars; Swimming pool; Walking; Wine Tasting

Accommodation

3 Twin Bedrooms
1 Apartments for 4 people
1 Apartments for 6 people

Email

baganheiro@solaresdeportugal.pt



Quinta do Baganheiro, a 17th Century manor built by the Knights of Malta, bears witness to a somewhat tumultuous history, having been the victim of several attacks during the French invasions. Through many generations, Baganheiro has lost and regained land, but has always remained with the same family. This eminent manor house affords a stunning view over the Lima valley, and is surrounded by the succulent greenery of vineyards, orchards and chestnut trees. Na 6ª linha, a seguir a same family: "Baganheiro" was the name given at the end of the 18th Century, probably due to the fact that flax and wine were cultivated on the estate, "baganho" being the name of the plant in Portuguese.

Location

Queijada, 7 km from Ponte de Lima.

Approach

From Porto Airport: take the motorway A3 to Braga/Valença. Leave the motorway at km66 in direction to Vila Verde. After paying the toll turn left in the road to Ponte de Lima (N201). After 2 km, you will come to the village, Queijada. Drive through the village, and you will see a sign for Quinta do Baganheiro on the right side. Turn left here into the driveway.

Maria Teresa G. G. N. Monteiro Santos

Póvoa e Meadas · 7320-014 Castelo de Vide · Portugal



In the Castelo de Vide council, near Marvão and Portalegre, Quinta de Bela Vista is the guarantee of absolute restfulness and communion with nature. with magnificent views all round. Located in a farm estate, where you have the opportunity of watching the agricultural work, like fruit harvest, milking of cows, grape harvest and the wine making. Quinta da Bela Vista demonstrates the taste and wisdom of a good country house. This house is a symbol of the rural traditions of the Alentejo region.

Location

Póvoa e Meadas, 13 km from Castelo de Vide.

Approach

From Porto Airport: Take the A1 to Lisbon, get out of A1 at Torres Novas, take the N118 follow the directions to Abrantes continue on N118 to Alpalhão, then when you arrive to Alpalhão take the N246 to Castelo de Vide, here follow the directions to Póvoa e Meadas, follow the signpost Quinta da Bela Vista to find the house.

From Lisbon: Take A2 / Sul motorway and then A6 until Estremoz. From here follow the IP2 / N18 to Portalegre. Once arriving in Portalegre take the N246 road Castelo de Vide and from here follow the directons to Póvoa e Meadas where you will find the house.

Quinta e Herdade B

Open all year

Facilities | Activities

Bicycles; Meals available on request; Games room; Mini-Golf; Horses; Jogging course; Seminars; Swimming pool; Tennis; Walking

Accommodation

4 Bedrooms (2 Doubles and 2 Twins)
1 Apartments for 2 people
1 Apartments for 4 people
1 Apartments for 6 people

Email belavista@solaresherdeportugal.pt

**Quinta e Herdade B**

Open from 15th July to 30th September

Facilities | Activities

Gardens; River nearby; Swimming pool; Walking

Accommodation

3 bedrooms
(2 Doubles and 1 Twin)

Email calcada@solaresherdeportugal.pt

**Luís Manuel Magalhães Fernandes Pinto**

4960-614 Melgaço · Portugal



The exact date of construction of this rustic house is unknown, although by the architectural style and archaeological evidence, it is thought to be late 17th or early 18th Century. This farm setting in the most northerly village of Portugal is close to the mountainous region of the Peneda-Gerês National Park, rendering it a most picturesque location. Its location allows guests to know the rural traditions of the region. Quinta da Calçada is also next to the Minho river, where the "lampreia", a river fish, is much appreciated.

Location

Melgaço

Approach

From Oporto Airport: Take the motorway A3 to Braga/Valença. In Valença take the N101 to Monção/ Melgaço. The house is situated 100 m from Melgaço, in the road to S. Gregório.

Alcino Cardoso

Lugar do Casal · Facha · 4990-600 Ponte de Lima · Portugal



Situated in Facha, near Ponte de Lima, Quinta do Casal is a Manor House from the XVI century. It was provided with a simple and modern decoration. It has six new apartments. Outside there are a very beautiful wood near the orchard, a great swimming pool, and a tennis court. Quinta do Casal is a nice proposal to a calm and pleasant holiday where history and contemporaneous art are together.

With thousands of trees, bushes and herbaceous, its gardens and running waters offers to the guests a tranquil encounter with nature.

Location

Facha, 6 km from Ponte de Lima.

Approach

From Porto: Follow the A3 in direction to Valença/Braga, and leave at km 76 in direction to Ponte de Lima. After paying the toll turn to the right to Ponte de Lima. Three km after, you will find a roundabout and you pass it right ahead. Two km after you have another roundabout and here you have to turn to the right. One km after there is a third roundabout, so you have to turn to the left to Barcelos, Darque for the EN203. Five km after, in Seara, you have to turn to the left, to a small road and follow the signal "Facha" and "Castro de Sto Estevão". 1,4km after you will find Quinta do Casal in your left side. It has a white wall and a chapel.

**Quinta e Herdade B**

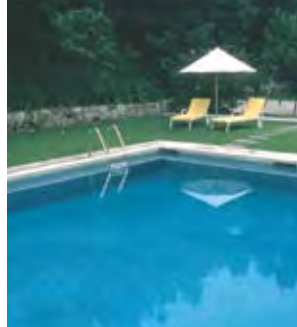
Open all year

Facilities | Activities

Chapel; Fishing; Games room; Gardens; Gymnasium; Indoor swimming pool; Seminars; Swimming pool; Tennis; Walking

Accommodation

3 Twin Bedrooms
6 Apartments for 2 people

Email casal@solaresdeportugal.pt**Quinta e Herdade C**

Open all year

Facilities | Activities

Bar; Games room; Gardens; Swimming pool; Walking

Accommodation

4 Bedrooms
[1 double and 3 twins]

Email cimaeiriz@solaresdeportugal.pt**João Gaspar de Sousa Gomes Alves**

4810-601 Calvos · Guimarães · Portugal



From this house, located in the hill of Penha, the visitor can enjoy the peaceful of the country in a health ambience ecological balanced together with a magnificent view make this place ideal for a relaxing holidays, far away from the big cities noises. The house was constructed in the 17th century and it represents the Minho architecture. Later, it was restored keeping its original design.

Location

Calvos, 10 km from Guimarães.

Approach

From Oporto Airport: Take the motorway A3 towards Braga/Valença turning off at km25 onto the A7 towards Guimarães. Once you arrive in Guimarães take the road to Felgueiras/Fafe (N101), after 4 Km turn right to the road signposted Felgueiras (N101). Go along this road for 4 Km and you will find on your right a sign indicating Penha-Lapinha. Follow this road for 2 Km and you will find a pillory with a cross, there turn left and you will find the house entrance gate on the left side.

Maria Laura Q. A. F. Cardoso da Rocha
3660-404 S. Pedro do Sul · Portugal



Dating back to the period before the foundation of Portugal (1143), Quinta da Comenda was owned by the Queen D. Teresa, mother of the first king of Portugal, D. Afonso Henriques. A farming and wine growing estate surrounds a house of exceptional architectural beauty. The wines produced here have been known since the days of the Order of Malta. So, the owners decided to develop a modern agricultural production: now the produce biological agriculture, pioneer in the region.

Quinta e Herdade B
Open all year

Facilities | Activities

Chapel; Meals available on request; Fishing; Games room; Gardens; Hunting; Seminars; Swimming pool; Walking; Wine Tasting

Accommodation

6 Bedrooms (1 Double and 4 Twins)
1 Apartment for 2 people

Email comenda@solaresdeportugal.pt

Location

2 km from S. Pedro do Sul.

Approach

From Oporto Airport: Take the A1 motorway to Lisbon, get out of A1 at Albergaria-a-Velha, follow the IP5/A25 till you see a signpost Vouzela, make a left turn and go to Vouzela when you arrive to Vouzela take the N16 to S. Pedro do Sul. Once in S. Pedro do Sul continue on N16 to Viseu the house is situated on the right side follow the sign post.



Piers Alexander Crighton Gallie
Franqueira · 4750-301 Barcelos · Portugal



Quinta e Herdade B
Open from April to October

Facilities | Activities

Gardens; Library; Swimming pool; Walking; Wine Tasting

Accommodation

3 Bedrooms
(1 twin and 2 doubles)

Email franqueira@solaresdeportugal.pt

Taste the 'Vinho Verde' of Convento da Franqueira, a 16th Century monastery built with the stones from the nearby ruins of Faria castle. The English owners have restored the 'Convento' with charm and imagination creating a comfortable family home. The lush greenery of Franqueira's gardens and vineyard, and the spring-fed swimming pool hidden behind a graceful 17th Century 'fonte' provide the visitor with a perfect setting to unwind.

Located at 6 km from the typical city of Barcelos, Quinta do Convento da Franqueira is a good starting point to discover some enchantments of this region.

Location

Franqueira, 6 km from Barcelos.

Approach

From Porto Airport: Take the Northern coastal road A28 to Viana do Castelo/Valenca. Turn right at Junction 18, Braga Barcelos. Take A11, m-way, to exit 3, Barcelos. Take left lane direction Viana do Castelo and follow N103 North to 2nd right, sign Pov. de Varzim. Go under bridge and take 2nd left to Carvalhal, Franqueira. Follow road through village, up hill, over m-way, through woods for 3.5km. Turn right before blue bar, pass church and turn left through blue gates.



Ilídio José Vieira de Matos

Cabeça Gorda · 7800-631 Beja · Portugal



Monte da Corte Ligeira is a typical house from Alentejo region that maintains the original architecture. The estate of 250 hectares blends its traditional decorations and the peace of the countryside to all the modern comforts of this restored house, inviting you to a pleasant stay. Here, guests can hunt, fish and walk. They can also participate in the agricultural activities of the house. From Monte da Corte Ligeira guests can observe a magic sunset.

Location

Cabeça Gorda, 14 km from Beja.

Approach

From Lisbon Airport: Follow in the motorway A2 in direction to Sul/Algarve until the exit to IP8/Beja. Follow the IP8 until Beja, and there take the IP2 to Faro/Algarve. After 11 km leave in direction to Mertola/Vila Real de Sto António, and 300 m after turn left in direction to "Quintos". After 4 km you will see the white and yellow farm gates at your right.



Quinta e Herdade B

Open all year

Facilities | Activities

Fishing; Games room; Hunting; Swimming pool; Walking

Accommodation

8 Bedrooms
(1 Double and 7 Twins)

Email corteligeira@solareshortugal.pt



Quinta e Herdade C

Open all year

Facilities | Activities

Bar; Gardens; River nearby; Swimming pool; Tennis; Walking

Accommodation

8 Bedrooms
(3 Doubles and 5 Twins)

Email cortinhas@solareshortugal.pt



Mário Gaspar Leite de Barros Pinto

Lugar de Cortinhas · Paçô · 4970-231 Arcos de Valdevez · Portugal



Situated in the heart of the Alto Minho near the entrance to the Peneda Gerês National Park, in a region of contrasts and unusual beauty, this house dating from the beginning of the XX century and built in granite, is approached by a shady drive. Its interior is notable for the fine collection of neo-classical glazed tiles.

Francisco Teixeira de Queiroz, a writer from the 19th, ordered the construction of this house. Personalities from Portuguese culture and from the politics are attached to the history of this house. After a period of decline, Quinta de Cortinhas belongs now to Mário Caspar Leite de Barros Pinto and its wife Maria da Graça Teixeira de Queiroz, granddaughter of the writer who ordered to construct the house.

Location

Paçô, 1 km from Arcos de Valdevez.

Approach

From Porto: Follow the A3 in direction to Valença/Braga, and leave at km 77 in direction to Arcos de Valdevez. After paying the toll follow the IC28 to Arcos de Valdevez. Leave the IC28 on the exit to Arcos de Valdevez and 2 km after, you will find the gate of Quinta de Cortinhas in your right side, 50 m before a petrol station (GALP).

António Júlio Agorreta d' Alpuim

Av. Estrada Real • 4930-337 Vila Nova de Anha • Portugal



Paço d'Anha is a fine example of 16th Century Portuguese architecture. Many superb pieces of antique furniture and family heirlooms can be seen here. The name 'Paço' was given after the king D.António Prior de Crato hid here in 1580, when persecuted by Spanish soldiers. Absolute privacy and tranquility is afforded by these apartments, housed in the renovated buildings. One may visit the vineyards and cellars and sample the renowned Vinho Verde.

Location

Vila Nova de Anha, 3 km from Viana do Castelo.

Approach

From Oporto Airport: take the IC1/A28 to Viana do Castelo Approximately 15 kilometers before Viana do Castelo, turn right following the sign for Braga / Barcelos and Zona Industrial (note that you will pass a sign indicating this distance in kilometres). This will take you to a roundabout where you must turn right following the sign Viana do Castelo, following the N13 road. After passing the petrol station turn left following the blue sign "Turismo de Habitação". Continue along this road following the blue sign for Paço d' Anha and after 1.5 km, you will come to the center of the village of Anha, where, in a small square you will see a Post Office and two Cafés. Follow the blue sign marked "Turismo de Habitação" until you come to a high stone wall which is the perimeter wall of Paço d' Anha.

**Maria Margarida Corrêa de Barros Baltar**

Quinta da Maragoça • 4575-572 Valpedre • Penafiel • Portugal

**Quinta e Herdade C**

Open all year

Facilities | Activities

Chapel; Meals available on request;
Games room; Gardens; Gymnasium;
Sauna; Seminars; Swimming pool;
Tennis; Walking

Accommodation

3 Bedrooms (1 Double and 2 Twins)
4 Apartments for 2 People
1 Apartment for 6 People

Email maragoca@solaresdeportugal.pt

Situated close to the spa of S. Vicente, in the way of Penafiel to Entre-os-Rios, Quinta da Maragoça, is a house of the 18th century that offers an ample panoramic view of the landscape of Douro Litoral. It is a truly place of well-being and leisure, where beyond of foot tours or bicycle ridings, people can still usufruct of a spa, fitness and sauna spaces and a therapeutical massage room and treatments. Here we can find history and stories of different centuries, a truly travel through Baroque period.

The main house is now considered a national monument and classified by IPA (Institute of Architecture Patrimony).

Location

Valpedre, 8 km from Penafiel.

Approach

From Oporto Airport: follow the Motorway A4 in direction to Amarante/Vila Real. Leave on the exit to Penafiel Sul/Entre-os-Rios and follow the indications to Entre-os-Rios driving on the road EN 106 until arrive to the village of "Pinheiro". There, turn right to "Escola C+S do Pinheiro". Go straight ahead following on the left side of the road. You will pass through the Paroquial Church. Then you will arrive to a bifurcation. Turn to the right and 1 km ahead you will find Quinta da Maragoça on the left side of the road.



Filinto Moura Morais

Estrada de Valpaços-Apartado 194 · 5400-560 Chaves · Portugal



Quinta da Mata is a house from the XVII century - with a chapel, located at 3 km from the city of Chaves in the hillside of the "Serra do Brunheiro" surrounded by a thick forest and by copious sources of water. Quinta da Mata has a strong granite construction and here emerges the white chapel. The access to the house is made by a rock stairs that lead to a forecourt to welcome the guests.

The more adventurous guests that love nature can ride horses, bicycles and walk in maintenance circuits or clime the mountain.

Location

3 km from Chaves.

Approach

From Oporto Airport: Take the A4/IP4, in direction to Vila Real. In Vila Real take road EN 2 in direction to Chaves. Quinta da Mata is a 3 km from Chaves, on the road in direction to Valpaços (EN 213).

**Quinta e Herdade B**

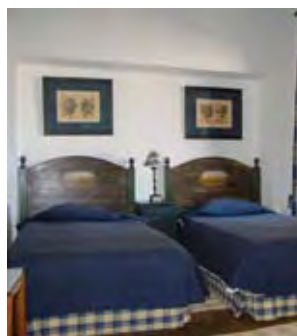
Open all year

Facilities | Activities

Bicycles; Chapel; Meals available on request; Gardens; Library; Sauna; Seminars; Swimming pool; 2 Tennis; Walking; Wine Tasting

Accommodation

6 Bedrooms
(4 double and 2 twins)

Email matal@solaresdeportugal.pt**Quinta e Herdade B**

Open all year

Facilities | Activities

Bar; Billiards; Chapel; Meals available on request; Fishing; Horse Ridding; Hunting; Walking

Accommodation

5 Twin rooms

Email negrila@solaresdeportugal.pt**Nuno Eugénio de Almeida**

Sto Aleixo da Restauração · 7875 Moura · Portugal



In the border with Spain, a few kilometres from Moura, in Santo Aleixo da Restauração, it is placed Herdade da Negrita. With an area of 3500 ha, and being one of the oldest properties of the Baixo Alentejo, Herdade da Negrita keeps unbroken its natural beauty.

Its five rooms, all with bathroom, guarantee a calm sleep and a wake up full of energy. The farm allows discovering the habitat of the bovines, the true alentejano pig and all the fauna that coexists in this region. Here it is possible to make part of the house work, such as the animal creation and the olive and cereals harvest.

Location

Santo Aleixo da Restauração, 15 km from Moura.

Approach

From Lisbon: Follow in the A2 until the exit to IP8 to Beja. In Beja, follow in the EN260 in direction to Spain for 58 km until Vila Verde de Ficalho. There, turn to "Safara / Sobral da Adiça", road EM385. 10 km after Sobral da Adiça, turn right to "Sto Aleixo da Restauração", and 5 km after you will find, on your right side the sign "Monte da Negrita". So, turn there and 5 km after you will find the House.

Heitor Manuel Alves

Paço · Ferreira · 4940-262 Paredes de Coura · Portugal



Located in a 5 hectare farm, a 16th century manor house, which name is derived from the distinguished families linked to the clergy, that have lived there for 5 centuries. In the thick wood of the mature forest near the farm, there is a chapel where the owners maintain the traditional celebration of festivities.

The house is surrounded by trees and countryside. Despite its noble characteristics, the house has a rustic environment because there are plenty of agricultural activities. In the outside there are the balconies, the animals, the wine cellar and a beautiful "espigueiro".

Location

Ferreira, 5 km from Paredes de Coura

Approach

From Porto Airport: Take the motorway A3 to Braga/Valença. Leave the motorway in the exit signpost Paredes de Coura. After paying the toll, turn left and follow the direction of Paredes de Coura and continue along this road for 8km and then you will come to Ferreira. At Ferreira you will see a sign for Casa do Paço, turn left following the sign and after 1km you will come to the house.

**Oscar Oruesagasti Soraluce**

Parada · 4970-261 Arcos de Valdevez · Portugal

**Quinta e Herdade B**

Open all year

Facilities | Activities

Gardens; Seminars; Swimming pool; Walking

Accommodation

6 doubles Bedrooms

Email paradavez@solareshortugal.pt

The story of this house is wrapped in mystery and the story of the family which began its construction is unknown. The first registration of the house goes back to 1931, although its construction may have started earlier. Its reconstruction took place with the present owner, in 1996. Surrounded by a magnificent landscape with a beautiful view to the National Parque Peneda Gerês, with a serene and welcoming atmosphere, you can enjoy unforgettable moments where this peaceful atmosphere will provide you a tranquil stay at any time of the year.

The region has rich gastronomy, unforgettable landscape and ancestral culture, which still lives in many traditions, festivals, fairs and pilgrimages.

Location

Parada, 2 km from Arcos de Valdevez.

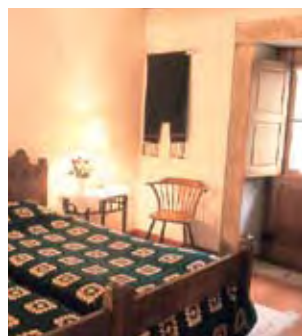
Approach

From Oporto Airport: take the motorway A3 in direction to Braga/Valença and leave at km77 to Arcos de Valdevez. Follow the IC28 in direction to Arcos de Valdevez. When reaching Arcos de Valdevez, catch the road to Monção; 1 km after leaving Arcos de Valdevez, turn left at the intersection, after finding a shrine, go straight on and, at the next intersection, turn right. 100m ahead there is a great gate, which marks the entrance of the House.



Maria José Nogueira de Sousa Lopes

Picaria · 4825-227 Guimarei · Santo Tirso · Portugal



An authentic example of farming life in the 18th Century, built predominantly of granite with wooden beams in the interior, Quinta da Picaria nestles in the rural region of Guimarei, a sleepy village near Santo Tirso, the perfect setting for walking enthusiasts.

The beauty of the vineyards and the orchards and the water tank form the perfect alive picture of the agricultural environment. Quinta da Picaria is located in a privileged natural place, being a perfect example of a farming house from the 16th century. In the summer, nothing is better than taste the produced wine Vinho Verde.

Location

Guimarei, 5 km from Santo Tirso.

Approach

From Porto Airport: Take the A3 for Braga. After about 20km take the road to Santo Tirso. In Santo Tirso take the old road N105 ("estrada velha") to Porto. After about 2 Km turn right to a small village called Guimarei. Follow the road for about 1 km, then turn left. After a further 750m, turn right and the house is on your right.

**Maria Joaquina de Portugal L. T. Aragão de Sousa Alvim**

Faia · 6300-095 Guarda · Portugal

**Quinta e Herdade A**

Open all year

Facilities | Activities

Billiards; Chapel; Fishing; Gardens; River nearby; Seminars; Swimming pool; Walking

Accommodation

2 Twin Bedrooms
5 Apartments for 2 people

Email ponte@solareshort.com

Situated in the Natural Park of the Serra da Estrela, this Quinta is reached by a Roman bridge over the river Mondego. This 18th century manor house has a box garden laid out in 1740 according to the design of a French architect. This house has excellent qualities for mountain tourism or for tranquillity and quietness at the gardens by the river shore. Quinta da Ponte is located near by some historic villages becoming like this a center of interest for those who want to make the Castles course as Sortelha, Trancoso, Almeida and Marialva and others.

Location

Faia, 13 km from Guarda.

Approach

From Oporto Airport: Take the motorway A1 to Lisboa, and turn into A25/IP5 to Viseu and Vilar Formoso. Follow the A25/IP5 in direction Guarda/Vilar Formoso. After passing the exits to Celorico and Trancoso, turn right in the exit number 26, that indicates "Trânsito Local" and Porto da Carne. 100m after leaving the motorway turn right. A few kilometers after turn right following the signs "Aldeia Viçosa", "Faia", "Quinta da Ponte" and a blue sign "Turismo de Habitação". Follow that narrow road for about 2,5 km and will come to a fork in the road. Continue straight on and you will find the house 300m after on the right side.



João Machado Cruz

Prova 4980-550 · Ponte da Barca · Portugal



The spacious, modern apartments at Quinta da Prova provide an excellent base for fishing, hunting, swimming and rambling. Unwind at this peaceful river-side setting with its surrounding woodland and enjoy the superb food at nearby restaurants. This Quinta it meets nature in its pure state, because of its agricultural characteristics, such as sheep, chicken and cattle creation or, simply, due to its proximity of the charming Lima river.

Quinta e Herdade C

Open all year

Facilities | Activities

Fishing; Jogging course; River nearby; Walking

Accommodation2 apartments for 2 persons
3 apartments for 4 personsEmail prova@solaresdeportugal.pt**Location**

Prova, 500 m from Ponte da Barca.

Approach

From Oporto Airport: Take the motorway A3 to Braga/Valença. At the km 77 leave the motorway in the exit signpost Arcos de Valdevez. After paying the toll, follow the road IC28 in direction to Arcos de Valdevez/Ponte da Barca. You will arrive to Ponte da Barca, here you go to the center and cross the old bridge over the river Lima, and immediately after the bridge you will see this big house on the right where you must go.

**Maria Fernanda São José Bibiano Martins Ferreira**

Estorãos · 4990-590 Ponte de Lima · Portugal

**Quinta e Herdade C**

Open all year

Facilities | Activities

Bicycles; Fishing; Games room; River nearby; Swimming pool; Walking

Accommodation

3 Apartments for 4 people

Email rei@solaresdeportugal.pt

Quinta do Rei combines its distinct rustic ambience with an air of elegance. Set in the picturesque environs of Estorãos, this is the perfect spot to unwind and ramble through the surrounding countryside. This house has the rustic architecture from the ends of the 19th century and integrates a farm with its agricultural activities that guests can also participate.

Location

Estorãos, 7 km from Ponte de Lima.

Approach

From Oporto Airport: Take the motorway A3 to Braga/Valença. At the km 77 leave the motorway in the exit signposted Arcos de Valdevez. After paying the toll, follow the A27 in direction to Viana do Castelo. Leave the A27 on the exit signposted "Estorãos / Lagoas". On the roundabout turn left following the signs to Estorãos. After 1 km you will arrive to a small roman bridge. Just before the bridge turn left. You will find Quinta do Rei, 100 m ahead on the left.



Amélia do Nascimento Pereira

Roseira · 4990-297 Ponte de Lima · Portugal



This manor house from the end of the last century was built from an ancient farm house and has a most exceptional panorama over the village of Ponte de Lima and river. The house, offering all of the modern comforts is the perfect choice for those who appreciate the tranquility of this region either for a pure relaxed stay or for getting to know Minho region. This house, a typically agricultural house located in a rustic farm, has leafy trees on the outside and variety spaces for rest.

Quinta e Herdade C

Open all year

Facilities | Activities

Gardens; Swimming pool; Walking

Accommodation

6 Bedrooms
(4 Doubles and 2 Twins)

Email roseira@solaresherdeportugal.pt

Location

1 km from Ponte de Lima.

Approach

From Porto Airport: Take the motorway A3 to Braga/Valença. At the km 76 leave the motorway in the exit signposted Ponte da Barca/Ponte de Lima. After paying the toll, turn right to Ponte de Lima. 2 km after you will come to a roundabout, continue straight on and 1,5km after you will find another roundabout. Turn right to Viana do Castelo and 500m after you will come to a third roundabout just before the bridge. Here turn left signposted Darque and Barcelos and after 1 km turn left following a signpost to the house. In 500m you will the entrance of the house on your left.



Jorge Henrique Carvalho de Campos

S. Bento da Várzea · 4755-536 Várzea · Portugal



Quinta e Herdade C

Open all year

Facilities | Activities

Chapel; Gardens; Horses; Seminars;
Swimming pool; Walking

Accommodation

6 Bedrooms
(3 doubles and 3 twins)

Email

santacomba@solaresherdeportugal.pt

Pay a visit to Quinta de Santa Comba, and experience a step back to the farming days of years ago. This pastoral house, with its characteristic stonewalls and a wooden beam guarantee a warm welcome for its guests. Integrated within this homestead is a beautiful chapel, a haven for quiet relaxation at the end of the day.

Guests can taste the famous wine Vinho Verde produced in this farm, and also meet the horses and the cows, participating in the activities of the house.

Location

Várzea, 4 km from Barcelos.

Approach

From Porto Airport: From Porto Airport: Take the Northern coastal road A28 to Viana do Castelo/Valença. Turn right at Junction 18, Braga Barcelos. Take A11, m-way, to exit 3, Barcelos. At Barcelos, take the road sign posted for Famalicão. In approx. 5km, you will see a small yellow sign (can be difficult to spot, but look out for the white house situated on the corner of this turning) for Quinta de Santa Comba on the left hand side. Take this turning, then turn first left. Keep bearing right, following the yellow signs. You will then see a narrow lane surrounded by vineyards. Follow this up to the house.



Judite Ranhada Alves Moreira

Sá · 4950-740 Monção · Portugal



Close to the Peneda-Gerês National Park, this farm was bought by a Brazilian emigrant and renovated in the 19th Century, adapted from a spinning room and bakery. Relax on the pool-side terrace with its spectacular view, and watch the sun slip slowly behind the distant mountains. Close to Monção, Melgaço, and Minho river, Quinta de Santo António allows guests to discover this rural region.

Quinta e Herdade C

Open all year

Facilities | Activities

Bar; Meals available on request;
Games room; Gardens; Seminars;
Swimming pool; Walking

Accommodation

5 Apartments for 2 people
1 Apartment for 4 people

Email

santoantonio@solaresdeportugal.pt

**Location**

Sá, 12 km from Monção.

Approach

From Oporto Airport: Take the motorway A3 in direction to Valença. In Valença take the N101 to Monção. In Monção don't go into town and continue in the road sign posted to Melgaço. After 12km, turn right following the signpost "Turismo de Habitação"/"Sá". Immediately after turn right again following signpost "Quinta de Santo António" and 1 km after turn left following the signpost and you will find the house, on the right.

**Quinta e Herdade C**

Open all year

Facilities | Activities

Chapel; Meals available on request;
Games room; Gardens; Swimming
pool; Tennis; Walking

Accommodation

5 Double rooms

Email saobento@solaresdeportugal.pt

**Álvaro Gil Quelhas Antunes de Azevedo**

Prado · 4730 - 460 Vila Verde · Portugal



The origin of this manor house with its coat of arms, and chapel, dates back to the mid-17th century. Located in the valley of the river Cávado, at the heart of Minho, quite near the town of Braga. At Quinta de São Bento, guests can experience the way of living in a manor house, enjoying the rural atmosphere. The area is very rich in terms of historical, cultural and religious heritage, as well as in its handicrafts which is linked to the ancestral origins of its people.

Location

Vila de Prado, 6 km from Braga.

Approach

From Oporto Airport: take the motorway A3 to Braga, turning off at Celeirós exit. After paying the toll turn right in direction to Braga. In Braga follow the direction to the railway station. At the roundabout turn left towards Prado/Ponte de Lima. Continue straight on 5km, you will cross the roman bridge of Prado and the town upon reaching a roundabout, turn left in the way to Barcelos. 500m after, in opposite of the Church, turn left and you will find the gatehouse with the name on the wall.

Lígia Branca de Carvalho O. Gala Mexia Leitão

S. Lourenço do Bairro · 3780-179 Anadia · Portugal



In the Bairrada region, the house is part of an estate with vineyards and orchards. In the 19th Century it belonged to the first Viscount Seabre, who prepared Portugal's Civil Code that was in force from 1867 to 1966. It's an ideal place to visit the Luso and Curia Regions.

Quinta e Herdade B

Open all year

Facilities | Activities

Games room; Gardens; Seminars; Swimming pool; Walking; Wine Tasting

Accommodation6 Bedrooms (4 doubles and 2 twins)
1 Apartment for 2 persons.**Email**

saoulourenco@solareshdeportugal.pt

Location

São Lourenço do Bairro, 5 km from Anadia.

Approach

From Oporto Airport: Take the motorway, A1 towards "Lisboa". Turn off on the exit signposted "Mealhada". In Mealhada take N1 to north in direction to Curia. After 2 km you will pass the T-junction to Curia. Here you must continue in the same road (N1) and after 3km, on the roundabout, turn left following the signposts "Vagos", "Mogofores" and "Agro-Turismo" (blue signpost related to the house) and you will immediately cross the bridge over the railway. After 500m turn left following another blue signpost "Agro-Turismo" and 1,5 km turn left and you will find the house 50m after on the right.

**Fernanda Martins Vieira da Rocha**

Cibrão Caniçada cp248 · 4850-261 Parada de Bouro · Portugal

**Quinta e Herdade C**

Open all year

Facilities | Activities

Chapel; Meals available on request; Horses; River nearby; Swimming pool; Walking

Accommodation3 Double rooms
2 Apartments for 4 people**Email** sorilhal@solareshdeportugal.pt

As you approach the Quinta do Sorilhal you will see a typical manor house from the countryside in a rustic environment. This house is located between the Santa Maria do Bouro Monastery and Caniçada Dam very close of Cávado river and National Park of Gerês.

Quinta do Sorilhal is a perfect house for exploring the mountainous region of National Park of Gerês., ideal to the ecological tourism and mountain tourism. This house also provides meals with biological products of the farm: the meats, the vegetables, the wine, the honey. Quinta do Sorilhal has traditional meals as well.

Location

Parada de Bouro, 3 km from Vieira do Minho.

Approach

From Oporto Airport: take the motorway A3 to Braga. Arriving in Braga take the N103 road in directions to Chaves, following this road for 24-km approx. till you find signpost called Cerdeirinhas. After T-junction of Cerdeirinhas, turn to your left till find Caniçada Dam, follow this road during 1 km and Casa do Sorilhal is located at your left.



Maria da Glória Baptista Simões
6270-555 Torrozele • Seia • Portugal



Built in the end of the 19th century, the house is located in a beautiful farm near the Serra da Estrela National Park. It has prominent location with a magnificent view of the mountains. Carefully decorated it offers its guests a comfortable stay in a quiet environment.

Quinta e Herdade C
Open all year

Facilities | Activities
Gardens, Swimming pool; Tennis;
Walking

Accommodation
3 Bedrooms
(1 Double and 2 Twins)

Email torrozele@solaresdeportugal.pt

Location
Torrozele, 8 km from Seia.

Approach
From Porto: follow the A1 Sul towards Lisbon. Exit the motorway in the junction signpost A25/IP5/Viseu. In Viseu follow the N231 road in direction of Seia, driving through Nelas. Just before arriving in Seia, turn right to the N17 road towards Oliveira do Hospital. After app. 8 km, you pass the village of Torrozele. Shortly after, take the first turning on the right at the sign for the village of Folhadosa. You will see a pair of iron gates on the right. Immediately after, turn right down a narrow track. This leads to the house.



François Goris
Corte de Sines • 7750-311 Mértola • Portugal



Quinta e Herdade C
Open all year

Facilities | Activities
Meals available on request; Fishing;
River nearby; Swimming pool; Walking

Accommodation
5 Twin Bedrooms

Email valecovo@solaresdeportugal.pt

Herdade de Vale Côvo is an agro-tourism farm with 184 hectares within the Natural Park of the Guadiana valley, in Alentejo. The farm purpose is the production of quality organic products; maintenance and improvement of the environment. It is dedicated mainly to essential oil production proceeding from aromatic and medicinal plants, cultivated in biological production way. The house is from the 40's, a privileged place for hunting and lodging. The mount was restored, respecting traditional architecture, offering the comfort of a modern habitation. Here, guests can participate on the activities of the house, travelling around the essences world of rosemary, rockrose and other plants, and visiting the distillery of the exploration.

Location
Corte Sines, 19 km from Mértola.

Approach
From Lisbon Airport: follow the motorway A2 in direction to Algarve until find the exit to Castro Verde. There follow the indications to Mértola and arriving there, follow the indications to "Minas de São Domingos". About 4 km later, turn left in direction to Corte Sines. Drive until the village of Corte Sines. Just before the village you will find on your left side the indications to Vale Côvo. Follow that dirt road for 2 km and then you will find the gate of Herdade de Vale Côvo.



Fernando Teixeira de Almeida

Sto. Estêvão - Bastuço · 4750-081 Barcelos · Portugal



This granit house, dating from the early 18th century, was completely rebuilt in 1992 keeping all the characteristics of its rural setting and comfortable accommodations. It stands in a quite rustic environment with a lovely peaceful view and it is surrounded by cultivated land with fruit-trees. Nearby the place where it stands (Santo Estevão de Bastuço) there are historic cities like Braga (8 km) and Barcelos (18 km). This house is located in Vinho Verde region, allowing guests to taste it, a delicious aperitif to discover the history of the area.

Quinta e Herdade C

Open all year

Facilities | Activities

Swimming pool, Gardens, Central heating, Table tennis.

Accommodation5 Bedrooms (4 Doubles and 1 Twin)
1 Apartment for 2 people**Email** sourinho@solaresdeportugal.pt**Location**

Bastuço, 10 km from Braga.

Approach

From Oporto Airport: Take the A3 motorway to Braga/Valença. After approx. 50 km exit the motorway in the junction signposted Braga Oeste / Barcelos, and follow the direction of "Martim". After paying the toll turn left to Braga and 900 m after turn right following the signpost "Passos - S. Julião". Continue for approx. 3,2 km and you will come to a crossroad with a stone cross on the left, turn right and 200 m after you will find the house on the right side.

**Alda Ferreira Matos Martha**

Av. Marnoco e Sousa, 38 · Penedo da Saudade · 3000-271 Coimbra

**Casa Rústica C**

Open all year

Facilities | Activities

Games room; Gardens; Swimming pool; Walking

Accommodation3 Bedrooms
(1 Double and 2 Twins)**Email**

aldamartha@solaresdeportugal.pt

Situated in front of Penedo da Saudade, it is one of Coimbra's most romantic places. With a garden and a belvedere strongly related to Coimbra's traditions. Besides this privileged location, located a few minutes away from the University and Historical Center, the house gives an opportunity to discover Coimbra and his traditions.

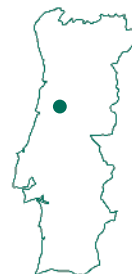
Very nice to visit during the traditional "Queima das Fitas" or for those o prefer to discover the heritage and patrimony of Coimbra. This manor house is a perfect place to rest and to have a nice conversation with the owner.

Location

Coimbra

Approach

From Porto/Lisboa: Go from the A1 leaving in direction to Coimbra and to the center of the city. There follow the directions to the "Penedo da Saudade". The Alda Martha house is in front of the mention belvedere.



Maria do Céu Gonçalves Ferreira

Cabreiro · 4970-100 Arcos de Valdevez · Portugal



Situated in the National Park of Peneda-Gerês, Casa de Avelar is a cosy, rustic house in keeping with its arcadian setting. Having an enviable panoramic view of Gerês, in a tranquil isolation, Casa de Avelar is paradisiacal for those who love the calmness, the nature or wants to visit the lost villages. Perfect for families or small groups that want to have unforgettable holidays. Explore this beautiful region on horseback, meet local people from all walks of life, and a wide variety of flora and fauna species.

Location

Cabreiro, 18 km from Arcos de Valdevez.

Approach

From Porto Airport: Take the motorway A3 to Braga/Valença. After 77 km leave the motorway in the exit signposted Arcos de Valdevez. After paying the toll, follow the IC28 until Arcos de Valdevez. At Arcos de Valdevez, follow the main road through the town, and take the road signposted to Monção. After 8km turn right towards Vilela. Continue and then turn right across a Roman bridge by the chapel, following the signs for Vilela. Turn left at the next T-junction, and continue for 3.5km to Cabreiro. Turn right here on the road signposted to Avelar. After approx 3km this road turns to an unmade track. Follow this for a further 4km, ignoring the left hand fork to the village of Avelar. The house is located 1km further on, on the left hand side. Take the driveway up to the house.

**Casa Rústica C**

Open all year

Facilities | Activities

Swimming pool; Walking

Accommodation

4 Bedrooms
[2 doubles, 1 twin and 1 room with 2 bunk beds].

Email avelar@solareshdeportugal.pt**Maria Fernanda Mimoso Lemos**

Moreira do Lima · 4990-670 Ponte de Lima · Portugal

**Casa Rústica C**

Open all year

Facilities | Activities

Bicycles; Gardens; Walking

Accommodation

2 Apartments for 2 people
1 Apartment for 4 people

Email covas@solareshdeportugal.pt

Completely surrounded by vineyards, Casa de Covas is a delightful country house, dating from the late 17th Century. This granite house integrates an agricultural exploration and is totally prepared to welcome who intends to have some days of complete calmness with all the comfort. Beyond the pleasant interior decoration, Casa de Covas has a very friendly way to welcome visitors. This is the perfect base for walking and cycling in the neighboring countryside.

Location

Moreira do Lima, 6 km from Ponte de Lima.

Approach

From Oporto Airport: Take the motorway A3 to Braga/Valença. At the km76 leave the motorway in the exit signposted Ponte da Barca/Ponte de Lima. After paying the toll, turn right to Ponte de Lima. 2 km after you will come to a roundabout, continue straight on and 1.5km after you will find another roundabout. Turn right to Viana do Castelo and 500m after you will come to a third roundabout just before the bridge. Continue straight crossing the river Lima. On the roundabout continue towards Viana do Castelo, on the EN202, for a further 2km, and take the turning on the right signposted Estorãos. Continue for 4km until arriving at Moreira do Lima, where you will turn right at the signpost for Casa de Covas (You will see the school on your left hand). Turn next right, following the signposts, and the house is situated on the left hand side about 100m along this narrow lane.

Germano Costa Fonseca

Gondomil - Laços · 4930-694 Valença · Portugal



Casa da Eira dates back to the 17th century and was built by monks that belonged to the Convent of Sanfins de Frietas. It stopped being farming house and it was completely restored and adapted to welcome guests maintaining its "Eira" (threshing floor) and "Espigueiro" (the original granary). It is surrounded by a calm garden organized in "so-calcos" enjoying an excellent view over the Minho Valley, and over the beautiful landscape of the area. Casa da Eira is located between Valença and Monção, allowing a visit to these small but historical and beautiful villages.

Location

Gondomil, 8 km from Valença.

Approach

From Porto Airport: Take the motorway A3 in direction to Valença. In Valença take the N101 to Monção. 8 km after turn right when you find a sign that indicate Gondomil, and 700 m after turn right again and you will find the House in left side of the road.

**Casa Rústica C**

Open all year

Facilities | Activities

Gardens; Swimming pool; Walking

Accommodation5 Bedrooms
(1 Double and 4 Twins)**Email** eirai@solaresdeportugal.pt**Horácio Antas Fernandes**

Cabração · 4990-570 Ponte de Lima · Portugal

**Casa Rústica C**

Open all year

Facilities | Activities

Bar; Gardens; Swimming pool; Tennis; Walking

Accommodation

6 doubles rooms

Email

encruzilhada@solaresdeportugal.pt



At Casa da Encruzilhada, located on the village of Cabração, you will appreciate a magnificent view over the Mountain. Total isolated, in a calm and pure ambience, the house invites you the make a journey in the "Serra d'Arga". The house was rebuilt and adjusted to the modern comfort conditions, the house is an inviting retreat from the city stress. Perfect to remember old times and the history of the region and to those who love ecotourism.

Location

Cabração, 10 km from Ponte de Lima.

Approach

From Oporto Airport: Take the motorway A3 to Braga/Valença. At the km 76 leave the motorway in the exit signpost Ponte da Barca/Ponte de Lima. After paying the toll, turn right to Ponte de Lima. 2 km after you will come to a roundabout, continue straight on and 1,5km after you will find another roundabout. Turn right to Viana do Castelo and 500m after you will come to a third roundabout just before the bridge. Continue straight crossing the river Lima.. Continue towards Viana do Castelo on the EN202 for a further 2km, and take the turning on the right signpost Estorãos (you will also see some blue signposts for several houses in the village of Estorãos). Continue for 10km, and in the village of Cabração you will find the house in the right side of the road.

Ernesto Martins Ferreira

Estorãos · 4990-590 Ponte de Lima · Portugal



The house is situated in Viana do Castelo. The Faria Araújo family who still resides there today purchased Casa do Ameal in 1669 for just 3,500 shillings. It is thought to have been built in the 16th Century, although no exact date is known. In keeping with traditional Minho noble houses the entrance courtyard is adorned with a stone fountain and pond. The proprietors of Ameal have thoughtfully provided an authentic handicrafts and folkloric display, and exhibit antique costumes belonging to their ancestors.

Casa Rústica B

Open from April to October

Facilities | Activities

Fishing; River nearby; Walking

Accommodation

1 Apartment for 2 people

2 Apartments for 4 people

Email

moinhoestoraos@solaresdeportugal.pt

Location

Estorãos, 7 km from Ponte de Lima.

Approach

From Oporto Airport: Take the motorway A3 to Braga/Valença. At the km 77 leave the motorway in the exit signposted Arcos de Valdevez. After paying the toll, follow the A27 in direction to Viana do Castelo. Leave the A27 on the exit signposted "Estorãos / Lagoas". On the roundabout turn left following the signs to Estorãos. After 1 km you will arrive to a small roman bridge. The mill is on the left side of the bridge.

**Carlos Higgs Madeira**

Rua da Boavista 10 · 2040-302 Rio Maior · Portugal

**Casa Rústica C**

Open all year

Facilities | Activities

Billiards; Gardens; Seminars; Swimming pool; Walking

Accommodation

6 Twin bedrooms

Email foral@solaresdeportugal.pt

Traditional construction of the Ribatejo region from the end of the last century, situated on a small rural town, Rio Maior. The same Family have owned the house for four generations, it recently underwent some changes from the purpose of installing modern facilities for welcoming tourists. The name of the Casa do Foral originated from the fact that the various lands and houses off the surroundings payed the "Foro ou Foral" by ancient ownership of the family. Every room has a private bathroom, central heating and air ventilated bathrooms. In one of the rooms in the house, we can see walls decorated with traditional azulejos originating from the end of the 18th century. In the garden there is a recreational space which allows the guests, to watch television, read and play snooker.

Location

Rio Maior.

Approach

From Lisbon Airport: take the motorway A1/Norte in direction of Porto. Leave the motorway in the junction signposted Rio Maior / Aveiras / Caldas da Rainha, and then follow the directions of Rio Maior. In Rio Maior the house is located in Rua da Boavista, near the centre.



João António da Cunha Rodrigues Cruz

Estorãos · 4990-590 Ponte de Lima · Portugal



The proud hosts of this cosy, rustic cottage have given it many personal touches, allowing the visitor to feel very much at home. Estorãos, which provides the setting for Casa da Gaiba, is a most captivating, peaceful village.

Casa da Gaiba has a kitchen, a living room and two rooms; this rustic house was beautifully recovered and now welcomes guests with sympathy, providing relaxation to those who search the beauty of the region.

Casa Rústica C

Open all year

Facilities | Activities

Fishing; River nearby; Walking

Accommodation

1 Apartment for 4 persons

Email gaiba@solaresdeportugal.pt**Location**

Estorãos, 7 km from Ponte de Lima.

Approach

From Oporto Airport: Take the motorway A3 to Braga/Valença. At the km 77 leave the motorway in the exit signposted Arcos de Valdevez. After paying the toll, follow the A27 in direction to Viana do Castelo. Leave the A27 on the exit signposted "Estorãos / Lagoas". On the roundabout turn left following the signs to Estorãos. After 1 km you will arrive to a small roman bridge, cross the bridge and immediately turn right after the bridge. Casa da Gaiba is to be found on the right hand side of this small lane in about 100m.

**Maria do Rosário D. S. Coutinho de Calheiros e Menezes**

Abade do Neiva · 4750-001 Barcelos · Portugal

**Casa Rústica C**

Open all year

Facilities | Activities

Gardens; Swimming pool; Tennis; Walking

Accommodation

6 Bedrooms

(2 Doubles and 4 Twins)

Email monte@solaresdeportugal.pt

Beautifully designed gardens at Casa do Monte beckon you to explore every nook and cranny under the shade of its pines and oaks. The interior is decorated with local furniture; charming wooden pieces with brightly painted floral designs. Climb up to the characteristic veranda and enjoy panoramic views of Barcelos town and the Cávado valley. For those who love nature, the owner organizes pedestrian tours or walks on request to discover the region. Casa do Monte is perfect for those look for peace and relaxation.

Location

Abade do Neiva, 3 km from Barcelos.

Approach

From Porto Airport: Take the A3 to Braga and leave the motorway in the exit to Braga/Barcelos. After paying the toll turn right to Barcelos. On arrival to Barcelos (you don't go into town) continue until you find a right turn to Viana do Castelo. Turn right and in a short while, you will see a road leading to the right sign posted to Abade do Neiva follow that road. Take this turning, and in approximately 1.5km you will find the house located on the left hand side. The name of the house is written on the gates on a tiled nameplate.



Mário Trigo Cortez Pereira

Rua das Portas de Beja 43 · 7830-431 Serpa · Portugal



Casa da Muralha is located in one of the entrances of the wall that delimits the historical center of Serpa. It was constructed in the 19th century by the ancestral of Mário Trigo Cortez Pereira. The bedrooms are organized in order to guarantee privacy and independent entrance. There are four bedrooms typically decorated. The breakfast is composed of local products. The local activities are fishing fishing, hunting, bird watching, mostly in non-farmed lands and near water ways. The surrounding rugged farmlands, dotted with olive and cork trees, are ideal for cycling, horseback riding, swimming, hiking and canoeing.

Casa Rústica C

Open all year

Facilities | Activities

Fishing; Gardens; Hunting; Walking

Accommodation4 Bedrooms
(1 Double and 3 Twins)**Email** muralha@solaresdeportugal.pt**Location**
Serpa**Approach**

From Lisboa: Follow the A2 and leave at km 120 (exit number 10) to Beja. Take the EN259 and the EN121 (IP8) to Beja. In Beja, follow the EN260 to Serpa/Spain. Leave the EN260 in the first exit to Serpa. Casa da Muralha is located near the Portas da Muralha de Serpa (Serpa Wall Doors) - Portas de Beja (Beja Doors) - easy to find because there is an aqueduct in that wall.

José Manuel Júdice Glória

R. da Igreja, 1 · Mexilhoeira Grande · 8500-132 Portimão · Portugal

**Casa Rústica B**

Open all year

Facilities | Activities

Gardens; Swimming pool; Walking

Accommodation5 Bedrooms
(3 Doubles and 2 Twins)**Email** palmeirinha@solaresdeportugal.pt

This typical old rural Algarve house, whose origins go back to the 16th century, is totally restored. It is located in a village where the effects of tourism are still little felt. It lies by the Alvor estuary at a short distance from Lagos and Alvor beaches and Serra de Monchique.

Casa da Palmeirinha is a charming house centred on its private courtyards and gardens, with a nice swimming pool. Guests can make walks, horse riding, and the house is not far from the surfing area of the West Coast of the Algarve.

Location

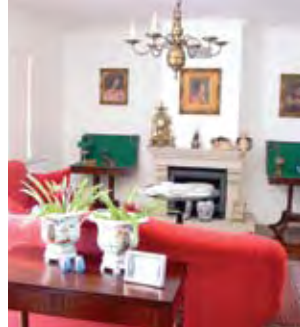
Mexilhoeira Grande, 8 km from Portimão.

Approach

From Lisbon Airport: Follow the motorway A2 in direction to Algarve. When you arrive to Algarve follow the "Via do Infante/ A22" until Portimão. From Portimão follow the N125 in direction of Lagos. After 8 km, in Mexilhoeira Grande, turn right towards the centre where you will find the house just before the church.

Maria Armanda Guedes de Sousa

Vila Chão do Marão · 4600-801 Amarante · Portugal



Nestled in the slopes of the Marão hillsides, whose fine, clean air is perfumed with heather and French lavender, Casa da Pedra is bursting with the charms of songbirds and sunsets, which invite a relaxing walk to savour the country life to your satisfaction, on a well deserved rest, enjoying the views from your balcony.

This is a perfect house to those who want to discover this typical region, full of stories and mystery, enjoying the simplicity of the countryside.

Casa Rústica C

Open all year

Facilities | Activities

Gardens; Swimming pool; Walking

Accommodation

4 Bedrooms (1 Double and 3 Twins)
2 Apartments for 4 people

Email pedra@solaresdeportugal.pt**Location**

Vila Chão do Marão, 5 km from Amarante.

Approach

From Oporto Airport: take the motorway A4 in direction to Amarante. Leave the motorway in direction to "Amarante Este", and follow by the right. You will find the house after 5 km in the right side of the road.

Maria Ana Rooke P. Dias de Magalhães de Abreu e Lima

Arcozelo 4990-257 Ponte de Lima · Portugal

**Casa Rústica C**

Open all year

Facilities | Activities

Gardens; Swimming pool; Walking

Accommodation

5 Bedrooms
(2 Doubles, 2 Twins and 1 Single)
1 Apartment for 2 people

Email salgueirinho@solaresdeportugal.pt

This rustic cottage has a farming history stretching back to the 16th Century. Today Salgueirinho retains its farming culture, surrounded by vineyards, orchards, gardens and woodland, making it the ideal location for families. A breathtaking view of Ponte de Lima can be enjoyed from the wooden veranda.

Location

Arcozelo, 2 km from Ponte de Lima

Approach

From Porto Airport: Take the motorway A3 to Braga/Valença. At the km76 leave the motorway in the exit signposted Ponte da Barca/Ponte de Lima. After paying the toll, turn right to Ponte de Lima. 2 km after you will come to a roundabout, continue straight on and 1,5km after you will find another roundabout. Turn right to Viana do Castelo and 500m after you will come to third roundabout just before the bridge. Continue straight crossing the river Lima. Upon reaching the other side of the river, turn right, after the gas station, onto the north bank road to Arcos de Valdevez and Valença. Continue for another 200m and take the first turning on the left - a small lane signposted Casa do Outeiro. Go along the lane and you will come to a right hand turning in front of a church. Turn right here and following the signs for "Casa do Salgueirinho", 200m after you will find the entrance at your left hand.

Maria Antónia Silva e Sousa

S. Gonçalo, Arcozelo · 4990-150 Ponte de Lima · Portugal



Visitors will receive a warm welcome at Casa de S.Gonçalo, a 19th Century house on the banks of the River Lima, with views of the ancient town of Ponte de Lima and its beautiful medieval bridge. Here, you will discover a beautifully decorated interior including many pieces of hand painted regional pottery and a charming antique grandfather clock. S.Gonçalo has a secluded old fashioned garden and offers easy access to the excellent restaurants of Ponte de Lima.

Casa Rústica C

Open all year

Facilities | Activities

Gardens; River nearby; Walking

Accommodation1 Double room
1 Apartment for 2 persons**Email**

saogoncalo@solaresdeportugal.pt

Location

Arcozelo, 1 km from Ponte de Lima.

Approach

From Porto Airport: Take the motorway A3 to Braga/Valença. At the km76 leave the motorway in the exit signposted Ponte da Barca/Ponte de Lima. After paying the toll, turn right to Ponte de Lima. After 2 km you will come to a roundabout, continue straight on and 1,5km after you will find another roundabout. Turn right to Viana do Castelo and after 500m you will come to a third roundabout just before the bridge. Continue straight crossing the river Lima. On the other side of the river, turn right, after the gas station, onto the north bank road to Arcos de Valdevez and Valença and then turn immediate first right and continue along this lane for approx 400m. The house is to be found on the right hand side of the road.

**Maria Margarida A. A. Brandão Capelo**

Lugar da Piedade · 4755-508 Sequiade · Portugal

**Casa Rústica C**

Open all year

Facilities | ActivitiesBicycles; Meals available on request;
Games room; Gardens; Swimming
pool; Walking**Accommodation**3 Bedrooms (2 Doubles and 1 Twin)
3 Apartments for 2 people**Email** sequiade@solaresdeportugal.pt

Its construction has been traced to 1748. When the house came into new ownership, all the building was endowed with the best conditions with comfort and security. The stone walls were restored leaving the typical granite of the region visible, also allowing full isolation of the interiors.

The involving exterior space is carefully landscaped, possessing places and beautiful secluded places. Casa de Sequiade is perfect for rest but there are various activities and its nearness from Barcelos allows guests to discover this traditional region.

Location

Sequiade, 8 km from Barcelos.

Approach

From Oporto Airport: Take the A3 motorway to Braga/Valença. After approx. 50 km exit the motorway in the junction signposted Braga Oeste / Barcelos, and follow the direction of "Martin". After paying the toll turn left to Braga and 900 m after turn to your right side to Passos S.Julião to a national road, 5,5km after you will find a gas station there you turn to the right side and after 400m you will find Casa de Sequiade at your left hand.



Alcindo das Dores Pereira

Estorãos · 4990-590 Ponte de Lima · Portugal



An 18th Century granite construction, originally occupied by a clog maker ('Tamanqueiro'), Casa do Tamanqueiro later became part of a farm, lending a rustic quality to this charming cottage. Inside, you will find the traditional stone fireside and kitchen, so typical of the Minho region, decorated with local handicrafts and pottery.

Casa Rústica C

Open all year

Facilities | Activities

Fishing; River nearby; Walking

Accommodation

1 Apartment for 4 persons

Email

tamanqueiro@solaresdeportugal.pt

Location

Estorãos, 7 km from Ponte de Lima.

Approach

From Oporto Airport: Take the motorway A3 to Braga/Valença. At the km 77 leave the motorway in the exit signposted Arcos de Valdevez. After paying the toll, follow the A27 in direction to Viana do Castelo. Leave the A27 on the exit signposted "Estorãos / Lagoas". On the roundabout turn left following the signs to Estorãos. After 1 km you will arrive to a small roman bridge, cross the bridge and immediately turn right after the bridge. Casa do Tamanqueiro is to be found on the right hand side of this small lane in about 200m.

