



“Special places to stay”

Anyone who desires to discover fascinating settings through the real Portugal cannot fail to be captivated by the treasury of experiences offered by the Solares de Portugal. Their charm and ambiance takes hold of the imagination in many different ways. You arrive as guest and you leave as a friend.



Solares de Portugal

Solares de Portugal is a unique concept that was introduced to promote quality tourist accommodation in houses of character and, at the same time, preserve the rich legacy of Portugal's architectural and cultural heritage.

It is important to emphasise that Solares are not hotels or guesthouses. They are privately-owned stately manor houses, elegant country homes and rustic farmhouses. Some of them were once in decline but today they are restored to their former glory and are open to guests who are treated as part of the family.

The Solares represent centuries of Portuguese history and culture. The majority of the grandiose 17th and 18th century houses are still in the ownership of the descendants of the founding family.

The owners will greet you with a warm welcome and during your stay share their knowledge about local places of interest, regional gastronomy, festivals and traditions.

Situated in some of Portugal's most picturesque locations, the Solares nestle within large estates surrounded by beautifully designed gardens, vineyards that produce delicious in-house wines, fruit orchards and woodlands.

Leisure facilities on offer include horse-riding, tennis, walking, a swimming pool, and games rooms. Meeting rooms and conference rooms are also available in several houses. But what we hope you will treasure most is the warm hospitality that is the hallmark of Solares de Portugal.

SOLARES DE PORTUGAL

Praça da República
4990 - 062 Ponte de Lima · Portugal
Tel (+351) 258 741672
Fax (+351) 258 741444
Email info@turihab.pt
www.solaresdeportugal.pt

Solares de Portugal are family homes as opposed to hotels, offering a very different kind of holiday experience with that "personal touch". They have been individually inspected to ensure the highest standard of quality and hospitality. Many Solares de Portugal have played host to the same family for hundreds of years.

Solares de Portugal are divided into three categories: "Casas Antigas, Quintas e Herdades, and Casas Rústicas", according to their status, size, surroundings and gardens, as well as decorations and historic furnishings.

CASAS ANTIGAS

Casas Antigas are elegant manor houses and country estates characterized by their elegance and many of them originate from the 17th and 18th centuries. Their architecture is of great importance to the country's heritage. The various styles reflect the distinct chapters in the history of Portugal.

QUINTAS E HERDADES

Quintas e Herdades are agricultural farms and estates within a rural setting and atmosphere, encompassing architectural styles from the classic to the rustic.

CASAS RÚSTICAS

Casas Rústicas are distinguished by their type of construction, being of simple architectural style and utilizing regional materials. Generally of smaller dimensions, they contain simple and practical, but comfortable furnishings. Located in the heart of rural villages or within farms, they offer an excellent opportunity to appreciate the peace and tranquility of the country life.



Solares de Portugal are divided into three categories: "Casas Antigas, Quintas e Herdades, and Casas Rústicas", according to their status, size, surroundings and gardens, as well as decorations and historic furnishings.

PRICES

There are three different price levels, A, B and C, with group A being the highest price level.

Class A Stately homes, finest manors and palaces, luxuriously furnished and often surrounded by beautiful gardens.
Class B Manors, Country houses, many of which date from the 18th century and carry the traditions of their ancestors.
Class C Rustic cottages and farmhouses, which have been converted into comfortable apartments.

DINNER

Dinner is available at several houses at an extra cost. Those requiring an evening meal should give plenty of notice to their host.

APARTMENTS

All apartments provide the necessary utensils and equipment for preparing meals on a small scale. Provision of breakfast linen and towels is also included.

SWIMMING POOLS

The swimming pools available in several houses are open air and don't have heated water. If the weather conditions allow it, they are available from 1st of May until 1st of October.

RESERVATION PROCEDURE

Reservations are to be made through:
 Solares de Portugal Central booking · CENTER
 Tel: +351 258 931 750 · Fax: +351 258 931 320
 Email: info@center.pt · www.center.pt

CENTER will then do its utmost to confirm each reservation or to offer alternatives. Clients have to stay for a minimum of 2 nights in each house. Reservations can be distributed throughout the different regions, within the houses mentioned previously.

TIME OF ARRIVAL

Clients may arrive on any day of the week. At the time of making the reservation clients will communicate to CENTER an approximate time of arrival. Clients should leave their rooms before midday, and should not arrive before this hour. This is to assist guest reception as far as possible.



It is important to emphasise that Solares are privately owned stately manor houses, elegant country homes and rustic farmhouses. Some of them were once in decline but today they are restored to their former glory and are open to guests who are treated as part of the family.

CASAS ANTIGAS

- 01 Solar Abreu Madeira
- 02 Casa de Alfena
- 03 Casa do Ameal
- 04 Casa do Anquião
- 05 Casa dos Assentos
- 06 Casa das Barcas
- 07 Casa do Barreiro
- 08 Paço de Calheiros
- 09 Casa das Calhetas
- 10 Casa do Campo
- 11 Casa de Canedo
- 12 Casa do Castelo
- 13 Casa do Cimo
- 14 Casa do Cotto
- 15 Casa de Crasto
- 16 Vila Duparchy
- 17 Casa de Fontão
- 18 Casa Grande da Bandeira
- 19 Casa da Lage
- 20 Casa dos Lagos
- 21 Solar de Miragaia
- 22 Casa de Mogofores
- 23 Quinta do Monteverde
- 24 Casa d' Óbidos
- 25 Casa do Outeiro
- 26 Casa das Paredes
- 27 Casa dos Pombais
- 28 Quinta da Praia das Fontes
- 29 Casa do Ribeiro
- 30 Palácio de Rio Frio
- 31 Casa de Rodas
- 32 C. St Antonio de Britiande
- 33 Quinta de São Caetano

- 34 Paço de São Cipriano
- 35 Casa de Sezim
- 36 Casa do Terreiro do Poço
- 37 Casa das Tílias
- 38 Casa da Timpeira
- 39 Casa da Tojeira
- 40 Casa das Torres
- 41 C. Torres de Oliveira
- 42 Solar da Vacariça
- 43 Quinta de Vale Mourelos
- 44 Casa dos Varais
- 45 Casa da Várzea
- 46 C. Vilarinho de São Romão

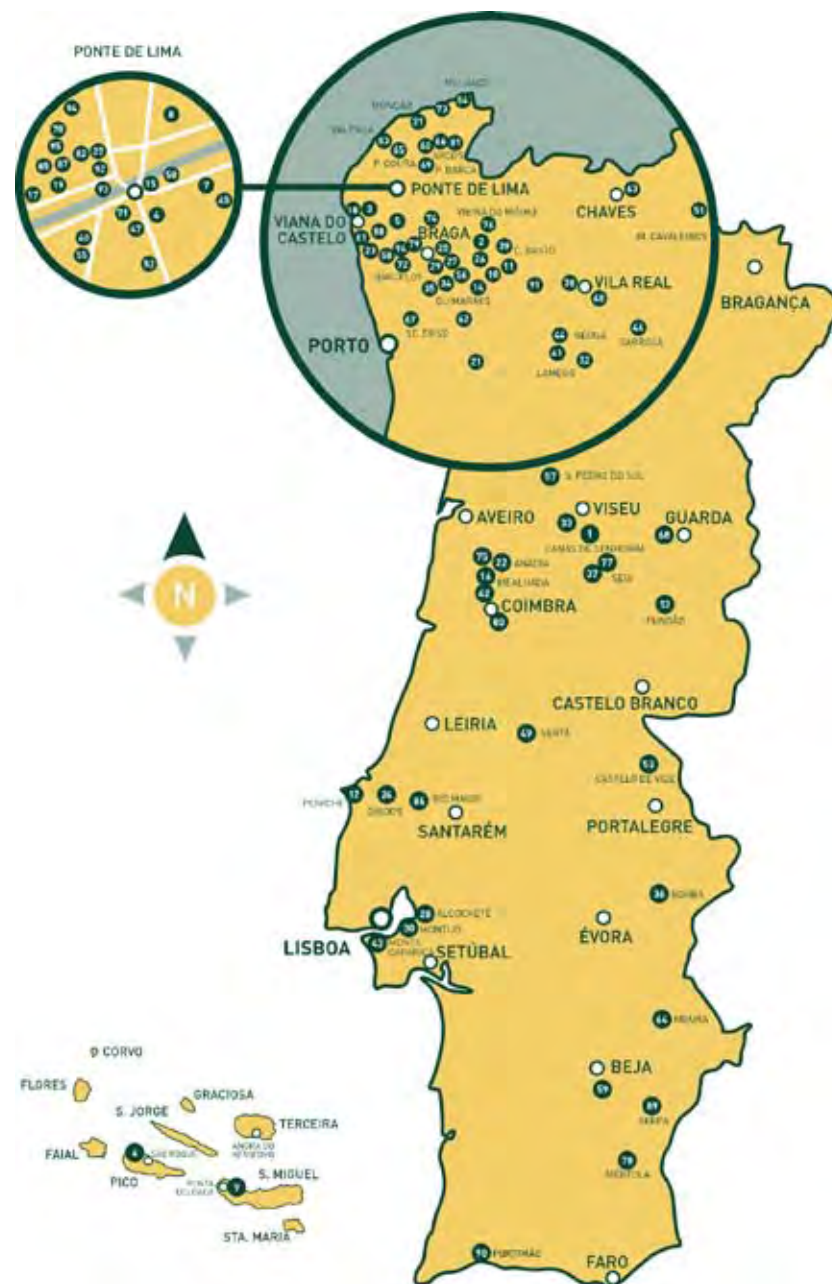
QUINTAS E HERDADES

- 47 Quinta da Agra
- 48 Casa Agrícola da Levada
- 49 Q. Albergue do Bonjardim
- 50 Quinta da Aldeia
- 51 Solar das Arcas
- 52 Quinta do Baganheiro
- 53 Quinta da Bela vista
- 54 Quinta da Calçada
- 55 Quinta do Casal
- 56 Quinta de Cima de Eiriz
- 57 Quinta da Comenda
- 58 Q. Convento da Franqueira
- 59 Monte da Corte Ligeira
- 60 Quinta de Cortinhas
- 61 Quinta do Paço d' Anha
- 62 Quinta da Maragoça
- 63 Quinta da Mata
- 64 Herdade da Negrita
- 65 Quinta da Casa do Paço

- 66 Quinta de Parada do Vez
- 67 Quinta da Picaria
- 68 Quinta da Ponte
- 69 Quinta da Prova
- 70 Quinta do Rei
- 71 Quinta da Roseira
- 72 Quinta de Santa Comba
- 73 Quinta Santo António
- 74 Quinta de São Bento
- 75 Quinta de São Lourenço
- 76 Quinta do Sorilhal
- 77 Quinta de Torrozel
- 78 Herdade de Vale Covo
- 79 Quinta do Sourinho

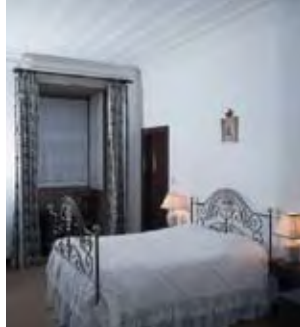
CASAS RÚSTICAS

- 80 Casa Alda Martha
- 81 Casa de Avelar
- 82 Casa de Covas
- 83 Casa da Eira
- 84 Casa da Encruzilhada
- 85 Moinho de Estorãos
- 86 Casa do Foral
- 87 Casa do Gaiba
- 88 Casa do Monte
- 89 Casa da Muralha
- 90 Casa da Palmeirinha
- 91 Casa da Pedra
- 92 Casa do Salgueirinho
- 93 Casa de São Gonçalo
- 94 Casa de Sequiade
- 95 Casa do Tamanqueiro



Maria Luísa Sampaio Abreu Madeira

Largo Abreu Madeira, 7 - 3525-004 Canas de Senhorim - Portugal



The approach to this majestic 18th Century manor is via a delightful pine wood and the sleepy village of Canas de Senhorim. Cattle-raising was once the livelihood of those who lived here, although guests are nowadays more likely to witness the making of the superb Dão wine and Serra cheese. The interior decoration is impeccable, its entrance hall adorned with two dignified carriages, and a stone staircase leading to the living quarters.

Solar Abreu Madeira has various artefacts found from the French Invasions period, including several silver objects and an Indo-Portuguese blanket.

Location

Canas de Senhorim.

Approach

From Porto Airport: Take the motorway, Auto Estrada A1 in the direction of Lisbon exiting when you see the signpost for IP5/A25 - Viseu/Aveiro. After paying the toll turn left along the IP5/A25 Viseu. Continue along this road then turn off onto the road to Mangualde. In Mangualde take the N234 towards Nelas. After Nelas turn right into Canas de Senhorim. When you get to the town Canas de Senhorim, turn left and follow the signs to the town centre. Once in the town centre follow the signs to the Igreja Matriz. In front of this Church you will see Solar Abreu Madeira.

Casa Antiga B

Open all year

Facilities | Activities

Chapel; Meals available on request; Games room; Gardens; Swimming pool; Table tennis; Walking; Wine Tasting

Accommodation

3 Bedrooms (1 double and 2 twins)

Email

abreumadeira@solareshdeportugal.pt

**Casa Antiga B**

Open all year

Facilities | Activities

Meals available on request; Games room; Gardens; Gold Museum; Seminars; Swimming pool; Walking

Accommodation

5 Bedrooms
(3 double and 2 twins)

Email alfena@solareshdeportugal.pt**Francisco de Carvalho e Sousa**

Aldeia de Baixo - Travassos - 4830-771 Póvoa de Lanhoso - Portugal



Casa de Alfena is a manorial house from the XVIII century linked to a group of rural buildings and old goldsmith's workshops. The house and the rural buildings have been adapted to receive guests and the workshops gave way to a gold museum. The museum exposes a vast collection of gold objects collected by Francisco de Carvalho e Sousa for more than 50 years.

Classified for its historical, cultural, and architectonic relevance, the house shares its gardens, granite threshing-floor, patios, and swimming pool with the museum. Travassos is a traditional filigree (Latin: filum-granum) workshop-village, located in the North bank of river Ave, and in the vicinity of Peneda-Gerês National Park.

Location

Travassos, 5 km from Póvoa de Lanhoso.

Approach

From Oporto, take de motorway A3 to Braga. Leave the A3 in Braga, enter the city, and follow the direction of Chaves. After some 12 Km turn right towards Póvoa de Lanhoso. From there, follow directions to Cabeceiras (de Basto). Keep the same route for some 7 Km until you find, on your left, an indication to Travassos. Turn to the village and keep to the asphalt road until you find Casa de Alfena on your left.

Maria Elisa de Magalhães Faria de Araújo

Meadela · R. do Ameal, 119 · 4900-585 Viana do Castelo · Portugal



The Faria Araújo family who still resides there today purchased Casa do Ameal in 1669 for just 3,500 shillings. It is thought to have been built in the 16th Century, although no exact date is known. In keeping with traditional Minho noble houses the entrance courtyard is adorned with a stone fountain and pond. The proprietors of Ameal have thoughtfully provided an authentic handicrafts and folkloric display, and exhibit antique costumes belonging to their ancestors. This House is situated in the region of "Ribeira Lima", at the most paradisiacal life and landscape of the Northern Portugal.

Location

Meadela, 1 km from Viana do Castelo.

Approach

From Porto Airport: Take the IC1/A28 to Viana do Castelo / Valença. Eventually, before you arrive in Viana, you will cross the bridge over the river Lima. After crossing the bridge, exit the motorway in direction to Viana (ignore the right turn to Meadela/Ponte de Lima) and after 2 km on the roundabout turn right signposted "Trânsito Local". In 200m you will arrive to a roundabout, follow your right, 100 m after the roundabout turn right and you will find the gate of the house on your left 50m after the entrance of the supermarket called "Continente".

Casa Antiga B

Open all year

Facilities | Activities

Meals available on request; Gardens; Handicraft; Seminars; Swimming pool; Table tennis; Walking

Accommodation

1 Double bedroom
4 Apartments for 2 people
3 Apartments for 4 people

Email ameal@solaresdeportugal.pt**António Victor Gonçalves da Silva**

Fornelos · 4990-620 Ponte de Lima · Portugal

**Casa Antiga A**

Open all year

Facilities | Activities

Chapel; Meals available on request; Gardens; Golf; Swimming pool; Walking.

Accommodation

7 Bedrooms
(5 Doubles and 2 Twins)

Email anquião@solaresdeportugal.pt

The Casa de Anquião is located 3 km from the historical town of Ponte de Lima, just beside the Golfe Course, between the fairways 3, 4 and 5. This rural manor house dates back to the 17th century, and allows the guests to enjoy a magnificent view of the Golf Course, and country side, and a peaceful environment.

Casa do Anquião was recently restored, being transformed in one of the most beautiful Solares of the Minho region.

Location

Fornelos, 5 km from Ponte de Lima.

Approach

From Porto Airport: take the motorway A3 to Braga/Valença. Leave the motorway at the km66 to Vila Verde and then turn left to Ponte de Lima after the toll. After approx. 7 km you will pass over the motorway and approx. 400 m turn right on the signpost "Turismo de Habitação" and 50 m after turn left. Continue for about 1 km and you will find the Casa do Anquião (a yellow house) on the left side.

Júlia dos Santos Alves de Araújo Novais Machado
4750-640 Quintiães · Portugal



The name 'Assentos' (house of records) was given to this house as it was once the place where agreements concerning local rents were kept. Today this splendid manor house remains as an ancestral monument to the 17th Century. Its large, grandiose apartments are traditional stone cottages, with wooden floors and ceilings.

The owner provided a familiar environment to the interior of the house, with old furniture. The living-room, that conserves the rock walls, has comfortable fireplace, armchairs and a library.

Location
Quintiães, 10 km from Barcelos.

Approach
From Porto Airport: Take the motorway A3 to Braga/Valença. At km66 leave the motorway in the exit signposted Vila Verde. After paying the toll, turn right signposted Braga and in 2 km you will come to a round about. Here turn right in direction of Viana do Castelo and after 7km you will cross the main square of Freixo village where you must continue straight on in direction of Viana do Castelo. In 6km you will arrive to the village of Balugães where you will find another crossroad. Turn left signposted Barcelos and continue for about 3 km, then turn right after a chapel, following the signpost of Quintiães. 2 km after turn left signposted "Centro" and 500m after you will find the house on your right, just before the church.

Casa Antiga B
Open all year

Facilities | Activities
Meals available on request; Gardens; Seminars; 2 Swimming pools; Table Games; Table tennis; Tennis; Walking; Wine Tasting

Accommodation
5 Bedrooms (3 Doubles and 2 Twins)
2 Apartments for 4 people
1 Apartment for 6 people

Email assentos@solareshort.pt



António Baião do Nascimento
Cais Velho · 9940-355 São Roque do Pico · Açores · Portugal



Casa Antiga B
Open all year

Facilities | Activities
Fishing; Walking

Accommodation
2 Bedrooms (1 double and 1 twin)

Email barcas@solareshort.pt

Casa das Barcas is a XVII century manor on the small wharf of Cais do Pico (S. Roque), facing the sea - where guests can fish and swim in crystal clear deep Ocean waters, 20 m away from the front door. With a splendid view to the mountain (Pico) and S. Jorge island, the house - recently restored, equipped with modern bathrooms and decorated with boat furniture (polished mahogany and brass) and travel souvenirs - offers the quiet atmosphere of a solid boat in a safe harbour in the middle of the ocean.

Casa das Barcas is also located on the shadow of the highest mountain of Portugal, the Pico Mountain.

Location
Ilha do Pico - Açores

Approach
From the airport (Pico): The house is located in Cais Velho (S. Roque), just in front of the wharf, about 15 km from the airport and about 1 km from the port with, boat connections to Faial, S. Jorge and Terceira.



M^a Teresa Barba de Meneses Malheiro de Faria Barbosa

Gemieira · 4990-645 Ponte de Lima · Portugal



Constructed in 1652, Casa do Barreiro has captured a certain timeless elegance in its beautiful central courtyard. Overlooking this courtyard are some of the guest rooms located in converted stables. Towards the front of the house, one may admire the spectacular view of the Lima valley. In the gardens, guests can contemplate the landscape. A stay in Casa do Barreiro provides the discovery of an extreme beauty region.

Location

Gemieira, 6 km from Ponte de Lima.

Approach

From Porto Airport: Take the motorway A3 to Braga/Valença. At the 76km leave the motorway in the exit signposted Ponte da Barca/Ponte de Lima. After paying the toll, turn left in direction to Ponte da Barca. Follow this road for approx 5 km until you arrive at the small village of Gemieira, and the house is located on the right hand side. You will see a yellow wall with the name of Casa do Barreiro written in black.

**Casa Antiga B**

Open all year

Facilities | Activities

Bar; Bicycles; Chapel; Meals available on request; Fishing; Games room; Gardens; Seminars; Swimming pool; Tennis; Walking; Wine Tasting

Accommodation

6 Bedrooms (4 Doubles and 2 Twins)
1 Apartment for 2 people

Email barreiro@solaresdeportugal.pt**Conde de Calheiros**

Calheiros · 4990-575 Ponte de Lima · Portugal

**Casa Antiga A**

Open all year

Facilities | Activities

Bar; Chapel; Meals available on request; Gardens; Horse Ridding; Jogging course; Library; Seminars; Swimming pool; Tennis; Walking; Wine Tasting

Accommodation

9 Bedrooms (6 Doubles and 3 Twins)
6 Apartments for 2 people

Email calheiros@solaresdeportugal.pt

Paço de Calheiros has a most impressive entrance with its distinguished gateway, beautiful tree-lined drive and stone fountain. Throughout the Centuries, the manor house always remained with the Calheiros family name.

The Count of Calheiros, who will proudly show his 17 Th Century family home, makes guests to feel very welcome. A magnificent view of the Lima valley can be seen from the tranquil gardens with 13 acres of orchards and vineyards. Guests can participate in garden painting activities and taste the magnificent produced wine Vinho Verde.

Location

Calheiros, 7 km from Ponte de Lima.

Approach

From Porto Airport: take motorway A3 in direction to Braga / Valença. At the Km 77 please leave on exit of Arcos de Valdevez. After toll continue straight in the IC28, in direction to Arcos de Valdevez until finding a exit to Refoios do Lima. After you will find a roundabout. There turn left in direction to Calheiros/Refoios, 3.5Km after you will find on your right side the indication Paço de Calheiros. Still traverse 2Km and you will find the manor on your right.

Carlos Diez Gonzalez

Rua da Boa Viagem, Calhetas · 9600-016 Ribeira Grande · Portugal



Located by the sea on the North coast of the island of S. Miguel, Casa das Calhetas was built on the 18th Century (1723). From the beginning, this manor house was inhabited by entail families. The view towards the North-Northeast faces impressive scenery over the Atlantic, the North coast of the island and the the Lagoa do Fogo mountain range. The view towards the South-Southwest offers scenery overlooking the only Azorean convent cloisters, and the magnificent century old house garden. Decorated with simplicity, Casa das Calhetas perpetuates the flavour of wealthy houses of the Azorean rural environment.

Location

Calheta, São Miguel - Açores.

Approach

From the airport (Ponta Delgada): Take the avenue (avenida) Infante D. Henrique, near the sea. When you reach the end of the avenue follow the indications to Ribeira Grande. After 6 Km turn left to the village of Pico de Pedra. Near the church of this village turn right to Calhetas. In Calhetas at the crossroad turn left and 100m after turn right and you will find the house near the sea.

Casa Antiga B

Open all year

Facilities | Activities

Bicycles; Fishing; Gardens; Library; Walking

Accommodation

3 Bedrooms
(2 Doubles and 1 Single)

Email calhetas@solaresdeportugal.pt



Maria Armanda Oliveira Meireles

Molares · 4890-414 Celorico de Basto · Portugal



Casa Antiga B

Open all year

Facilities | Activities

Chapel; Meals available on request; Games room; Gardens; Handicraft; Seminars; Swimming pool; Tennis; Walking; Wine Tasting

Accommodation

10 Bedrooms
(4 doubles, 5 twins and 1 single)

Email campo@solaresdeportugal.pt



On entering the splendid gateway of this noble 17th Century manor house, one immediately detects the pervading floral scent. Casa do Campo boasts a prize-winning garden, with its immaculately trimmed Camellias contoured into graceful designs. Specialists claim that the oldest Camellia in Portugal is to be found here. Visitors to this manor will also discover a Renaissance chapel in the grounds which holds a weekly mass. The interior of the house is decorated with beautiful furniture of various different styles.

Location

Molares, 4 km from Celorico de Basto.

Approach

From Porto Airport: Follow the A4 in direction to Amarante/ Vila Real. Leave the motorway at the exit N.º 17 in direction to Celorico de Basto, and follow the "Via do Tamega" to Fermil / Celorico de Basto for 20 km. 1.5 km before Fermil you will see, at your right, a signpost saying "Turismo de Habitação". Turn and after about 200m you will come to the house.

Rodrigo Rau

Barreiro-Canedo · 4890-140 Celorico de Basto · Portugal



Casa de Canedo is a country manor house build in the 17th century, which was and still is the focus of an agricultural and forestry operation that extends over approximately 90 acres. Located in the Basto region, an area famous for its beautiful countryside and its wines, it is equidistant from the villages of Cabeceiras de Basto, Celorico de Basto and Mondim de Basto. The house is situated in a peaceful valley, about 500 metres from the road, between Fermil de Basto and Arco de Baúlhe. It looks out on the mountains of the Serra do Marão which rise up on the other side of the Tâmega river to the high peak of Senhora da Graça.

Location

Canedo, 10 km from Celorico de Basto.

Approach

From Oporto Airport: Take the A3 Road for Braga, turning off for the A11 to Guimarães, following the direction to Cabeceiras de Basto. Leave the motorway in Arco de Baulhe, and after pay the toll turn right to Celorico de Basto. Continue for 6 km until you arrive to Canedo de Basto, then turn left into a narrow lane following the signpost and you will find the house after 500m. (The house locally is known as Casa do Barreiro).

**Casa Antiga A**

Open all year

Facilities | Activities

Badminton; Bicycles; Chapel; Meals available on request; Games room; Gardens; River nearby; Seminars; Swimming pool; Walking; Wine Tasting

Accommodation

9 Bedrooms
(6 double and 3 twins)

Email canedo@solaresdeportugal.pt**Maria Helena Horta Gama d'Almeida Baltazar**

Estrada Nacional 114, N°16 · 2520-025 Atouguia da Baleia · Portugal

**Casa Antiga B**

Open all year

Facilities | Activities

Bar; Gardens; Swimming pool; Walking

Accommodation

8 Bedrooms
(3 doubles and 5 twins)

Email castelo@solaresdeportugal.pt

In between fertile fields and long sandy beaches, in a refined and tranquil environment, this is a 17th century manorial house next to the walls of a Moorish castle. Casa do Castelo combines comfort with a beautiful and simple decoration. It is situated in a region that deserves to be visited due to the beauty of the landscape and the richness of the monumental and cultural heritage.

Location

Atouguia da Baleia, 5 km from Peniche.

Approach

From Porto follow the motorway A1 to Lisbon and after about 190 km exit in direction to Leiria. From Leiria follow the directions to Alcobaca and from here to Caldas da Rainha. Once in Caldas da Rainha continue towards Óbidos, where you should take the N114 to Peniche. The house is located in this road, in the village of Atouguia da Baleia, 5 km from Peniche. When you enter the village of Atouguia the house is located on your right hand side just in front of the church. From Lisbon take the motorway A8 towards Torres Vedras and Caldas da Rainha and exit in the junction signed Peniche / Dagorda and continue towards Peniche. The house is located in this road (N114), in the village of Atouguia da Baleia, 5 km from Peniche. When you enter the village of Atouguia the house is located on your right hand side just in front of the church.

João Miguel Miranda Vasconcelos

6230-050 Aldeia Nova do Cabo · Fundão · Portugal



Located in the mountains of Serra da Gardunha and Serra da Estrela this manor house dates from the 18th century. Casa do Cimo keeps the beauty of the past, showing a rich patrimony and an heritage inspired by Nation's History. It was dedicated to the kings of Portugal - D. Afonso IV to D. Maria I. Very recently the owners reconverted the whole house with modern comforts while maintaining the genuine atmosphere of a traditional stately home. Casa do Cimo has a homelike spirit. It is the ideal place to rest, to walk, to hiking and to do Mountains Sport.

Casa Antiga B

Open all year

Facilities | Activities

Bicycles; Meals available on request; Games room; Library; Seminars; Walking

Accommodation

10 Bedrooms
(4 Double and 6 twins)

Email cimo@solaresdeportugal.pt

**Location**

Aldeia Nova do Cabo, 2 km from Fundão.

Approach

From Oporto Airport: Take the motorway A1 to Lisbon. Leave the motorway in Aveiro and take the IP 5/A25 to Guarda. In Guarda take the IP2/A23 to Castelo Branco, and leave the IP2/A23 in Fundão. In the top of the main avenue in Fundão you will see a sign to Aldeia Nova do Cabo. After 2 km you arrive to the village. The House is in the centre of Village.

Albano Mendonça

Lugar do Cotto · 4650-712 Varziela · Felgueiras · Portugal

**Casa Antiga B**

Open all year

Facilities | Activities

Chapel; Meals available on request; Games room; Gardens; Swimming pool; Walking

Accommodation

6 Bedrooms
(4 Doubles and 2 Twins)

Email cotto@solaresdeportugal.pt



The house of Cotto is a typical Brazilian house, with a chapel, with origin in the 16th century, it underwent some developments and modifications during its existence, and quite recently went through a great restoration and functional modernisation, by the owner who is a direct descendant of the first owner. Situated in a valley, in the open region of the Vinho Verde where guests can admired the rare natural beauty it offers to the visitor comfort, cosiness and maximum relaxation.

Location

Varziela, 3 km from Felgueiras.

Approach

From Oporto take the motorway A4 to Vila Real. From here take A7 in direction to Guimarães. Exiting the motorway in Felgueiras take N101 (national road) to Varziela where you will pass by Longra and Varziela villages. Arriving in Varziela, you will see an indication to Covada/Felgueiras, turn left. After the Gas Station BP continue along this road 500-m apron till you see Casa do Cotto.

Gracinda da Conceição Pimenta Lopes

Ribeira · 4990-388 Ponte de Lima · Portugal



This 17th Century house still retains the traditional granite kitchen and tower from its original structure; an enchanting reminder of times past. Guest rooms are spacious, decorated in traditional Minho style. The exterior of the house offers a calm and healthy environment. Located close to the market town of Ponte de Lima, it offers easy access to local restaurants.

Casa Antiga B

Open all year

Facilities | Activities

Meals available on request; Gardens; Library; Seminars; Walking; Wine Tasting

Accommodation6 Bedrooms (3 doubles and 3 twins)
1 Apartments for 4 people**Email** crasto@solaresdeportugal.pt**Location**

Ribeira, 500 m from Ponte de Lima.

Approach

From Porto Airport: Take the motorway A3 to Braga/Valença. At the km76 leave the motorway in the exit signposted Ponte da Barca/Ponte de Lima. After paying the toll, turn right to Ponte de Lima. 2 km after you will find the house on the right side of the road on a small track sloping downwards, just after a turn to the town center.

**Maria José Duarte Príncipe Dória dos Santos**

3050-235 Luso · Mealhada · Portugal

**Casa Antiga B**

Open all year

Facilities | Activities

Meals available on request; Gardens; Seminars; Swimming pool; Walking

Accommodation

6 Bedrooms (3 doubles and 3 twins).

Email duparchy@solaresdeportugal.pt

At Vila Duparchy, the Duarte Figueiredo family take a special pride in making their spacious guest rooms as comfortable as possible, with splendid antique furniture and the odd personal touch which will make your visit a memorable one. The surrounding garden and nearby forest of Buçaco provide an attractive setting for rambling enthusiasts; with the nearby historic city of Coimbra providing an interesting day out. The house is located in the top of a hill also allowing a nice view for Luso.

Location

Luso, 6 km from Mealhada.

Approach

From Lisbon: Take the motorway - Auto Estrada no. 1, Lisbon to Porto, turning off at the sign for Mealhada. Make your way to Mealhada. From Mealhada take the N 234 towards Luso and Viseu. Before Luso you will see a petrol station on the right hand side. On the left you will see Vila Duparchy.

From Porto: Take the Auto Estrada, motorway, A1 towards Lisbon, turning off at the exit to Mealhada. Make your way to Mealhada. From Mealhada take the N 234 towards Luso and Viseu. Before Luso you will see a petrol station on the right hand side. On the left you will see Vila Duparchy.



17 CASA DE FONTÃO

José Martins Pires da Silva

Largo do Carvalho, Fontão · 4990-610 Ponte de Lima · Portugal



In the heart of Ribeira Lima Valley, in one of the most bucolic and picturesque villages in Minho, this palatial house with its grand interiors, whose access is made through a gate topped by a cross, evidence of its clerical ownership in the 19th century. In the exterior, the dominant colour is the green of the landscape that guarantees the calmness of the agricultural environment. The house is surrounded by latticework and groves of trees that provide the tranquillity of the rural life.

Location

Fontão, 8 km from Ponte de Lima.

Approach

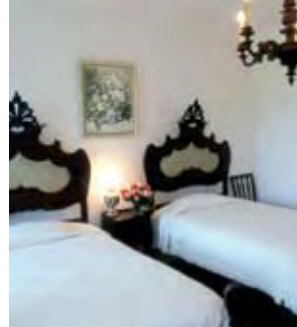
From Porto Airport: Take the motorway A3 to Braga/Valença. At the km76 leave the motorway in the exit signpost Ponte da Barca/Ponte de Lima. After paying the toll, turn right to Ponte de Lima. 2 km after you will come to a roundabout, continue straight on and 1,5km after you will find another roundabout. Turn right to Viana do Castelo and 500m after you will come to a third roundabout just before the bridge. Continue straight crossing the river Lima and follow in direction to Viana do Castelo on the road N202. 6 km after you will arrive to the village of Fontão. Once in Fontão you will see on your right a sign indicating the restaurant "S. Nicolau", turn right and the house is situated a few meters right ahead on the left side.



CASA GRANDE DA BANDEIRA 18

Maria Tereza Calado Majer de Faria

Largo das Carmelitas, 488 · 4900-463 Viana do Castelo · Portugal



Casa Antiga B

Open all year

Facilities | Activities

Gardens; Walking

Accommodation

3 Bedrooms (1 double and 2 twins)

Email

grandebandeira@solaresdeportugal.pt

Set in a small secluded square in historic Viana do Castelo, this 17th Century town house has belonged to the same family for several generations. Casa Grande da Bandeira affords easy access to local restaurants, sandy beaches and handicraft shopping. The enclosed garden towards the rear of the house embraces beautiful old Camellias and black bamboos from China.

Location

Viana do Castelo

Approach

From Porto Airport: Follow the IC1/A28, in direction Viana do Castelo/Valença. Eventually, before you arrive in Viana, you will cross the bridge over the river Lima. After crossing the bridge, continue in direction to Viana (ignore the right turn to Meadela/Ponte de Lima) and after 2 km turn right signposted "Trânsito Local". After 100m turn left and you will then eventually pass a bus station (on the left) and a Repsol petrol station (on the right). After this take a left turning signposted "Centro". It's the road just after the high school. Go around the school veering to the left. After about 100m you will come to Largo das Carmelitas (Carmelitas Square) where the house is situated, facing . Casa Grande da Bandeira has number 488 written on the door.



José Adolfo Coelho da Costa Azevedo

São Pedro D'Arcos · 4990-530 Ponte de Lima · Portugal



Built in the 17th century, Casa da Lage is a delightful manor house, which is distinguished by its historical background. Located in agricultural and forestry property, it offers its guests welcome the quietness, comfort and quality product of its historical, cultural values.

The guests can enjoy exceptional architectural beauty such as magnificent wood ceiling; regional costumes and the unforgettable effort dedicated to the quality of restoration and Tulha cottage adaptation.

Location

Arcos, 7 km from Ponte de Lima.

Approach

From Oporto take the motorway A3 Braga/Valença. At the Km76 leave the motorway in the exit signpost Ponte da Barca/Ponte de Lima. After paying the toll, turn right to Ponte de Lima. 2 km after you will come to a roundabout, continues straight on and 1,5km after you will find a second roundabout. Turn right to Viana do Castelo and 500m after you will come to other roundabout just before the bridge. Continue straight crossing the river Lima. Continue towards Viana at N202 (national road). After 7km, turn right in direction to São Pedro D'Arcos e Estorãos and 1,5km after you will see Casa da Lage.

**Casa Antiga A**

Open all year

Facilities | Activities

Chapel; Meals available on request; Games room; Gardens; Indoor swimming pool; Seminars; Tennis; Walking; Wine Tasting

Accommodation

10 Bedrooms
(3 Doubles and 7 Twins)

Email lage@solaresdeportugal.pt**Andreina Pinto Barbosa**

Bom Jesus · 4710-455 Braga · Portugal

**Casa Antiga B**

Open all year

Facilities | Activities

Gardens; Library; Swimming pool; Walking

Accommodation

3 Bedrooms (1 Double and 2 Twins)
2 Apartments for 4 people

Email lagos@solaresdeportugal.pt

Situated in one of the most beautiful tourist region of Portugal, Casa dos Lagos is located in a country property of 4 ha, with an appealing garden. The balconies of Casa dos Lagos impart panoramic views of Braga, whose wide variety of excellent restaurants is within easy reach of this 18th Century house. The gardens hide nice places to relax. Here guests can have great time on the afternoon, such as looking at the sunset. Just on the doorstep is the recreational area of Bom Jesus, with its gardens, boating lake, restaurants and tennis courts, and of course the Bom Jesus church with its magnificent steps. Its splendid location a stone's throw from Braga offers various excursions of general and cultural interest.

Location

Bom Jesus, 4 km from Braga.

Approach

From Porto Airport: Take the A3 Road for Braga, turning off at the first exit to Braga. After paying the toll turn right in direction to Braga. In Braga follow the direction to Bom Jesus and you will find the house on the left side before the sanctuary. There is a sign indicating the house on the right side.

Maria Teresa Matos Marta da Cruz

Travanca · 4690-831 Cinfães · Portugal



Located in the charming Douro valley, Solar de Miragaia is surrounded by most attractive scenery. This is an elegant 17th Century manor house dating from about 1645. The beautifully gated entrance bears the family coat of arms, welcoming the visitor to what will certainly be a delightful stay. In the Chapel of the house, with a magnificent baroque decoration, was found a manuscript dated 1762 in the sacred stone of the altar.

Location

Travanca, 7 km from Castelo de Paiva.

Approach

From Porto Airport: Take the motorway, A4 to Vila Real/Amarante. Leave the A4 at Penafiel (junction 13) and take the road N106 to Entre-os-Rios. Once in Entre-os-Rios cross the river and continue to Castelo de Paiva. Just before you arrive in Castelo de Paiva turn left following the road to Nespereira / Alvarenga and 1 km after turn right following the same direction and after 7 km you come to Travanca. In Travanca take the second road to the left, following the sign Turismo de Habitação. After 500m turn right into a narrow lane, following the sign "Solar de Miragaia". Then on your right you will see a stone cistern, after this the house is on the right. Although the house is in the county of Cinfães, it's nearer Castelo de Paiva (7km).

**Casa Antiga B**

Open all year

Facilities | Activities

Chapel; Meals available on request; Gardens; River nearby; Swimming pool; Walking

Accommodation

4 Bedrooms (3 Doubles and 1 Twin)
1 Apartment for 4 people

Email miragaia@solaresdeportugal.pt**Carlos Manuel Sampaio Faustino Campolargo**

Rua de Nossa Sra Auxiliadora · 3780-453 Mogofores · Portugal

**Casa Antiga B**

Open all year

Facilities | Activities

Bicycles; Meals available on request; Games room; Gardens; Gymnasium; Indoor swimming pool; Library; Turkish Bath; Walking; Wine Tasting

Accommodation

3 Double Bedrooms
3 Apartments for 2 people

Email mogofores@solaresdeportugal.pt

Casa de Mogofores, is a manor house from the XIX Century, is related to the Agricultural development of the Bairrada region and with the creation of the Thermal spa of Cúria. The owners produce the Campolargo Wines and they had carefully restored and decorated the house, to welcome the guests. Casa de Mogofores provides a restful stay and a contact with Portuguese history, in particular the period of transition from monarchy to the republic. This house plenty of charm is an ideal place to discover the Region, and visit the Curia Spas, to taste the gastronomy and wines, to play golf, to relax and profit their landscapes.

Location

Mogofores, 2 km from Anadia.

Approach

From Oporto Airport: Take the motorway, A1 towards "Lisboa". Turn off on the exit signposted "Mealhada". In Mealhada take N1 to north in direction to Curia/Porto. After 2 km you will pass the T-junction to Curia. Here you must continue in the same road (N1) and after 3km, on the roundabout, turn left following the signpost "Mogofores" and you will immediately cross the bridge over the railway. After 500m on the roundabout, turn to the right in direction to "Mogofores". Go straight ahead for 1,5 km towards to Mogofores Town, the house is on the center (near the Rail station, on the left side of the street – you can see a big pine tree in front of the house).

José Manuel de Araújo Baptista Mendonça

Sendim de Cima · 4935-564 Castelo do Neiva · Portugal



This manor house was built in the 16th and 17th centuries by the Cunha Lobo Barbosa and Sottomayor family just 1 km from the sea. In 1820, the Genoese Judge Luigi Vital Monteverdi married the owner of the estate and the house became to be known as Quinta do Monte Verde. The manor house was completely renovated but the interior retains the touch of the seventeen hundreds. Quinta de Monte Verde is a walled estate between the hills and the sea and close to the river mouth. Its privileged localization provides a gorgeous and an unforgettable stay to those o love nature. In Castelo do Neiva, the sandy beach rolls on and on; sand dunes and unspoilt stretches lend a wonderful sense of isolation to the surroundings.

Location

Castelo do Neiva, 9 km from Viana do Castelo.

Approach

From Oporto Airport: take the motorway A28/IC1 in direction to Viana do Castelo and leave on EN13 in direction to Castelo do Neiva. Reaching Castelo do Neiva turn left in direction to the beach, 200 m after you will find at your right side the Chapel Sra. das Neves. Close to the chapel you will find the gates to Quinta do Monte Verde.

**Casa Antiga A**

Open all year

Facilities | Activities

Bicycles; Meals available on request; Games room; Tennis; Gardens; Library; Seminars; Swimming pool; Walking; Wine Tasting

Accommodation

7 Bedrooms
(5 Doubles and 2 Twins)

Email monteverde@solaresdeportugal.pt**Fernando Amaral Campos Sarmiento**

Quinta de S. José · 2510-135 Óbidos · Portugal

**Casa Antiga B**

Open all year

Facilities | Activities

Games room; Gardens; Swimming pool; Tennis; Walking

Accommodation

6 Bedrooms (3 Doubles and 3 Twins)
1 Apartment for 2 people
1 Apartment for 6 people

Email obidos@solaresdeportugal.pt

Dating back to the 19th century, Casa d' Óbidos was built by the Mr. Garrelon, an engineer from the Eiffel team, who established himself there to lead the railway construction. It's located in an environmentally protected area, which allows the guest to enjoy a quiet environment and magnificent views of the castle of Óbidos.

Casa d'Óbidos has the characteristics of the great farming houses of the region. The property is situated in a region of great beauty, near from the beaches of Peniche, Baleal and Foz do Arelho. The proximity of Óbidos also allows discovering this gorgeous village.

Location

Óbidos

Approach

From Lisbon airport: Take the A8 motorway to Torres Vedras and Caldas da Rainha. Exit the motorway in the junction signposted Óbidos. Arriving in Óbidos you will find a roundabout where you must follow the directions to Caldas da Rainha (EN 8). Approx. 500 m after you will pass a church on your left (Igreja do Senhor da Pedra). Immediately after turn left following the signpost of Casa d' Óbidos, continue straight and after 700 m you will find the gates of the house.

João Gomes de Abreu de Lima

Arcozelo · 4990-246 Ponte de Lima · Portugal



The peaceful ambience of this 16th Century house was disrupted in 1809, when it was invaded by French soldiers and used as their headquarters. It has since regained its composure, surrounded by a leafy garden and woods. Its vast 16th Century fireplace in the kitchens with its majestic stone pillars, is a beautiful souvenir from years ago. Alongside Outeiro is an enchanting stone aqueduct covered in ivy, which can be viewed from the veranda.

Location

Arcozelo, 2 km from Ponte de Lima.

Approach

From Porto Airport: Take the motorway A28/IC1 in direction to Viana do Castelo. Then Following motorway A27 direction to Ponte de Lima. Leave at Arcozelo/Ponte de Lima (after a big tunnel). On the roundabout turn left in direction to Ponte de Lima, and continue straight for 1,5 km. After the traffic lights, turn right just before a brown tiled building. Go along a narrow lane for about 400 m. and turn sharp right immediately after the church on the right. About 50 m. along this cobbled lane take the left fork and continue, including up a small hill bearing left to the end. This is about 500 m. in total. At the end of the lane you will see a white wall with a gap in the middle which is the entrance to Casa do Outeiro.

**Casa Antiga B**

Open all year

Facilities | Activities

Chapel; Meals available on request; Gardens; Library; Swimming pool; Walking; Wine Tasting

Accommodation

3 Twin Bedrooms

Email outeiro@solaresdeportugal.pt**Maria Filomena Alvim Torres**

Avenida da Liberdade · 4820-118 Medelo · Fafe · Portugal

**Casa Antiga B**

Open all year

Facilities | Activities

Games room; Gardens; Swimming pool; Table tennis; Walking

Accommodation

8 Bedrooms (4 double and 4 twins) and 2 Apartments for 2 persons

Email paredes@solaresdeportugal.pt

This manor house originally dates from the mid 17th century and has subsequently been restaured. Its big granite walls, a very used material on the region, mark the landscape. The house is surrounded by a romantic garden with ornamental ponds. Also there's a small lake with running water and ancient camelias. It is located on the outskirts of the town of Fafe, where urban life blends harmoniously into the picturesque rural scenery of the Minho. Nearby are the ancient towns of Braga and Guimarães. Furthermore there is easy access to the beautiful National Park of Peneda-Gerês, famous for its mounts, dams and reservoir - an ideal place for water sports.

Location

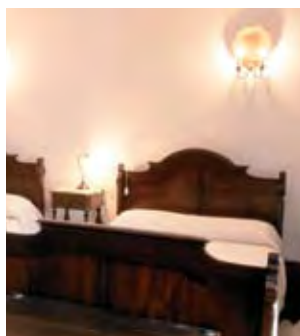
Medelo, 2 km from Fafe.

Approach

From Porto Airport: Take the A3 Road for Braga, turning off for the A7 to Guimarães. In Guimarães take the road to Fafe (N206) and a few kilometres after Guimarães you will enter a new road (IC5 / N206). Continue in this road until the junction signposted Póvoa de Lanhoso. 400 m after the exit turn right towards Medelo. After 1 km in the STOP sign turn right and 100 m after you will find the house on your right hand side.

Visconde Viamonte da Silveira

Av. de Londres · Creixomil · 4810-100 Guimarães · Portugal



This 18th Century manor house has been in the Sousa e Silveira family for 233 years. It is in the urban part of Guimarães but enjoys privacy, being protected by a lovely well maintained garden. Situated on the entrance of the city, Casa dos Pombais is a typical solar minhoto, surrounded by vineyards and a beautiful garden with orange trees, seedbeds and a fountain, where innumerable birds fly freely. With a beautiful the decoration, the house shows well conserved old furniture and valuable objects, including silvers, crystals and ceramics.

Casa Antiga B

Open all year

Facilities | Activities

Gardens; Seminars; Walking

Accommodation

2 Twin bedrooms

Email pombais@solaresdeportugal.pt**Location**

Guimarães

Approach

From Porto Airport: Take the A3 road for Braga turning off for the A7 at the km25 to the Guimarães. When you arrive in Guimarães, follow Av. Conde Margarido, just before entering the N206 turn right to Av. de Londres the house is situated on the left side, near the Hospital.

**João Pedro Gonçalves Gomes**

Largo Marquês de Soydos · 2890-132 Alcochete · Portugal

**Casa Antiga B**

Open all year

Facilities | Activities

Bicycles; Fishing; Games room; Gardens; Horse Ridding; Seminars; Swimming pool; Tennis; Walking

Accommodation5 Bedrooms
(2 Doubles, 2 Twins and 1 Single)
4 Apartments for 2 people**Email** praiafontes@solaresdeportugal.pt

Located in the centre of the picturesque town of Alcochete, with the river Tejo as landscape, Quinta da Praia das Fontes was the former residence of the Marquee de Soydos, built in the 16th century and later enriched with magnificent Portuguese tiles from the 17th and 18th Century. Its a prominent place where you can enjoy all the commodity in a historical ambience. You can also enjoy the traditional feasts of Alcochete. On this region the bull, the horse and the "campino" are very famous. The river Tejo also allows a nice fishing journey.

Location

Alcochete

Approach

From Lisbon: Follow the directions of A12 Sul/Ponte Vasco da Gama. You will cross the bridge "Vasco da Gama". Exit the motorway on the exit to Alcochete and follow the directions to Alcochete, where you will find the house located near the river, in front of the garden with statue of D. Manuel I.



Luís Manuel Fernandes de Almeida Ferraz de Menezes
S. Cristovão de Selho · 4810-316 Guimarães · Portugal



The house as it stands today was constructed in the 17th Century by the ancestors of today's residents. The interior is brimming with antique furniture and curios - even its ceilings are a delight to behold, some of them beautifully painted. The floors are not to be missed either, with their 'Arraiolos' rugs; Arraiolos being a town in the alentejo renowned for its elegant hand-woven rugs, with origins in the 18th Century. The house is surrounded by quiet forests where guests can enjoy walking, finding here and there natural fountains.

Location

São Cristóvão de Selho, 7 km from Guimarães.

Approach

From Porto Airport: Take the motorway, A3 for Braga, turning off at the km25 for Guimarães. When you arrive in Guimarães take the EN 105 to Santo Tirso. After 5km, when you arrive at Pevideém take the right hand turn to S. Cristovão do Selho. Continue towards S. Cristovão crossing over the bridge. You will come to fork in the road. Take the right hand turn which leads to S. Cristovão do Selho. You will find the house on the left hand side in the village.



Casa Antiga B

Open from March to November

Facilities | Activities

Chapel; Fishing; Gardens; Library; Walking

Accommodation

4 Bedrooms
[3 Doubles and 1 Single]

Email ribeiro@solaresdeportugal.pt



Maria de Lourdes Pereira Lupi D' Orey
Rio Frio · 2955-014 Pinhal Novo · Portugal



Casa Antiga A

Open all year

Facilities | Activities

Meals available on request; Gardens; Horse Ridding; Seminars; Swimming pool; Walking

Accommodation

4 Bedrooms
[3 Doubles and 1 Twin]

Email riofrio@solaresdeportugal.pt



Palácio de Rio Frio was built at the beginning of this century. At the time it was one of the biggest estates in the country mainly producing wine. The house is decorated with fabulous tiles. They illustrate the rural communities at work, in particular the wine making. In the main lounge the wall are completely covered with colourful tiles typical of the Ribatejo Region. The house is surrounded by a beautiful garden and its standing in the middle of a small wood creating a peaceful atmosphere.

Between Montijo and Alcochete, not very far of the Tejo riversides, a magnificent silence involves the golden landscape of Palácio de Rio Frio and provides an hospitable stay.

Location

Rio Frio, 10 km from Montijo.

Approach

From Lisbon: Find the signs to the bridge Vasco da Gama (Sul). After crossing the bridge continue in the A12 motorway. Approx. 6 km after exit the motorway in the junction signposted Pinhal Novo. After paying the toll, turn left following the N252 road to Pinhal Novo (2 km). In Pinhal Novo follow the signs to Rio Frio (6 km) where you will find the house.

Maria Luisa Távora

Rodas · 4950-529 Monção · Portugal



Situated in the 'Alvarinho' wine-producing region, this noble manor has been owned by the Pita Palhares Antas Marinho family since 1500. It boasts a beautiful drive leading to the grand entrance, guarded by two splendid Magnolias. This imposing building with its beautifully furnished interior is a delight to behold, and its surrounding woodland offers a charming backdrop for afternoon strolls.

At Casa de Rodas, guests can discover the history of the house and taste the magnificent produced wine Vinho Verde. The house is located 1Km far from Monção, allowing a nice visit to the village.

Location

Rodas, 1 km from Monção.

Approach

From Porto Airport: Take A3 motorway to Braga/Valença and leave the motorway in the junction sign posted Valença. From Valença take the N 101 to Monção. Arriving in Monção, in the roundabout, continue straight in direction to Melgaço and 500 m after turn right and 100 after you will find the entrance to the house on the right side.

**Casa Antiga B**

Open all year

Facilities | Activities

Chapel; Games room; Gardens; Swimming pool; Walking; Wine Tasting

Accommodation

9 Bedrooms (5 double, 4 twins)
1 Apartment for 2 persons

Email rodas@solaresdeportugal.pt**Casa Antiga A**

Open all year

Facilities | Activities

Bicycles; Chapel; Meals available on request; Gardens; Swimming pool; Walking; Wine Tasting

Accommodation

6 Bedrooms
(5 Doubles and 1 Twins)

Email britiande@solaresdeportugal.pt**António Carlos Sobral Pinto Ribeiro**

5100-360 Britiande · Lamego · Portugal



Casa de Santo António de Britiande is situated on the outskirts of the famous Douro Valley in Britiande itself, a village frequently featured in medieval documents. It is believed that the front of the house was built in the 16th century. The house has a 17th century chapel containing panels of "azulejos" (tiles), an altar and a ceiling in gilt carved wood. Many years ago the manor house was a place of rest for the monks of Ferreirim Convent (1,5km).

Location

Britiande, 5 km from Lamego.

Approach

From Porto Airport: Take the A4/IP4 to Vila Real. In Vila Real follow the motorway A24 in direction to Lamego/Viseu. Exit the motorway in the exit of Lamego, and on the roundabout follow the directions of Moimenta da Beira (Road N206). 3 km after you will arrive to the village of Britiande, you will see a signpost saying 'Britiande'. 400m after this, turn left, there is the sign of the house (Casa de Sto Antonio – Turismo de Habitação). After 50 m find the house at your right hand side.

Júlio de Sousa Vieira de Matos

Rua Poça das Feiticeiras, 38 · 3500-639 Viseu · Portugal



The Quinta de S. Caetano, situated near the historical centre of Viseu, is a 17th century manor house, a graceful architectural structure. This beautiful manor house is part of the history of Viseu, having been residence of illustrious families of the city, such as the Viscountess of São Caetano. The house is surrounded by mystery and it has a chapel with an inscription dated 1680. In the garden, we find trees with hundred years, fountains; lakes and greenhouses. Here, guests can enjoy the excellent views of the Serra da Estrela, the highest mountain in Portugal.

Location

Viseu

Approach

From Oporto Airport: Take the A1 to Lisbon, get out of A1 at Albergaria-a-Velha, follow the IP5/A25 to Viseu. At the town center of Viseu follow the street of Circunvalação, make a right turn to Mangualde, make a left turn to street Rua Poça das Feiticeiras, the house is situated on this street left side please follow the sign post.

Casa Antiga B

Open all year

Facilities | Activities

Billiards; Meals available on request; Gardens; Swimming pool; Walking

Accommodation

6 Bedrooms (4 double and 2 twins)

Email

saocaetano@solaresdeportugal.pt

**Dom João Almeida de Santiago Sottomayor**

4810-892 Taboado · Guimarães · Portugal

**Casa Antiga A**

Open all year

Facilities | Activities

Chapel; Meals available on request; Gardens; Jogging course; Library; Seminars; Walking; Wine Tasting

Accommodation

7 Bedrooms (4 double and 3 twins)

Email

saocipriano@solaresdeportugal.pt



A welcome sight indeed this 15th Century house must have been to the weary pilgrims lodging here on the way to Santiago de Compostela. Maintaining this age-old custom of receiving guests, the Sottomayor family today invite the modern day traveller. The spirit of Medieval Portugal is evident in the delightful tower room, with its splendid four poster bed. Paço de S.Cipriano is set amid the most enchanting gardens, orchards and vineyards, inviting you to stroll amongst its scented lush greenery.

Location

Taboado, 5 km from Guimarães.

Approach

From Porto Airport: Take the motorway, A3 for Braga, turning off at the km25 to the A7 for Guimarães. Leave the motorway on the exit of Guimarães, at the entrance of the city follow the directions of "Santo Tirso" for the road EN105, 350 m after turn left on the sign "Estação" and after 300 m, on the roundabout turn right (for the road close the big wall). After 2 km on the roundabout go straight following the sign of "Paço de S. Cipriano". 3 km after you arrive to "Taboado" and you will find the entrance of the house at your right, in front of the church.

Embaixador António Pinto de Mesquita

Santo Amaro · 4800-913 Guimarães · Portugal



Casa de Sezim sits in the heart of the Minho, the Garden of Portugal, near Guimarães, Portugal's first capital. This beauty house has harmonious lines and an impressive facade that have become a motive of international curiosity in recent years. Casa de Sezim's interior has captured a style of simple elegance with its exquisitely decorated bedrooms, some furnished with four poster beds. Within its impressive sitting rooms hang early 19th century panoramic wallpapers depicting scenes from both the old and new world of America. Wine production at Sezim dates back to at least 1930, with the old wine-making equipment still to be seen on the grounds. Nowadays, the Vinho Verde produced here is of prize winning category.

Location

Santo Amaro, 5 km from Guimarães.

Approach

From Porto Airport: Take the Auto Estrada (motorway), A3 towards Braga turning off at the km25 to the A7 towards Guimarães. Once you arrive in Guimarães take the N105 to Santo Tirso. Go along this road and after 2 km you will find the sign of Covas. 200m after turn right following the sign of Santo Amaro and Casa de Sezim. Continue for about 2 km and you will find a fork in the road, here take the left and 1 km after you will find the entrance to Casa de Sezim also on the left.

**Casa Antiga A**

Open all year

Facilities | Activities

Bar; Chapel; Meals available on request; Games room; Gardens; Seminars; Swimming pool; Tennis; Walking; Wine Tasting

Accommodation

9 Bedrooms (4 double and 5 twins).

Email sezim@solareshdeportugal.pt**Casa Antiga A**

Open all year

Facilities | Activities

Bicycles; Meals available on request; Gardens; Swimming pool; Walking; Wine Tasting

Accommodation

6 Bedrooms (3 Doubles and 3 Twins)

2 Apartments for 2 people

Email terreiro@solareshdeportugal.pt**João Cavaleiro Ferreira**

Lg Combatentes da Grande Guerra, 12 · 7150-152 Borba · Portugal



Casa do Terreiro do Poço an 18th century manor house, is located in the historical centre of Borba, next to the Largo dos Combatentes Garden. The main house comprises three buildings that integrate the facade and two contiguous cottages, forming a unique architectural set. Tastefully restored, its decoration combines the classic with the contemporary. The furniture from Portugal, Asia and Africa provides you comfort and it's a true example of how the Portuguese meet with other cultures of the world, throughout their History.

Location

Borba

Approach

From Lisbon: Take the A6 motorway to Évora, Spain. After passing the service area of Estremoz, pay attention and take exit nº8 Borba, Alandroal, Vila Viçosa. Leaving the toll motorway follow the sign N4 Elvas/Estremoz/Borba (-3,5T). Right after that, enter the N4 and turn left to Borba and Elvas. After passing the petrol station take the first possibility on your right hand side to enter Borba. Keep following the road, passing a winery on the right and further on, on the left, the church of S. Bartolomeu. After that and approximately 500m after entering Borba you will find a public garden on the left This is the Largo dos Combatentes da Grande Guerra, where the Casa do Terreiro do Poço is dominating the garden.

José Luís de Figueiredo Lopes
6270-329 São Romão · Seia · Portugal



Casa das Tílias is typical manor house of the Beira region dating back to the 19th century, restored and opened to guests while preserving its ancient and beautiful features. Located near Seia a delightful village of the interior of Portugal in the border of the Natural Park of the Serra da Estrela, at 600 m above the sea level where one can breathe the pure mountain air and discover a different country where tradition, character and quietness are its main characteristics.

Location

São Romão, 2 km from Seia.

Approach

From Porto follow the A1 Sul towards Lisbon. Exit the motorway in the junction signposted IP5/Viseu. In Viseu follow the N231 road in direction of Seia, driving through Nelas. Arriving in Seia, follow the M231 to S. Romão and when you arrive in S. Romão just follow the signs to the house.

From Lisbon follow the A1 Norte towards Porto. Exit the motorway in the junction signposted IP3/Viseu (km 197). After 40 km and before Santa Comba Dão, turn right towards Guarda. In Nelas drive through and follow the directions of Seia. Arriving in Seia, follow the M231 to S. Romão and when you arrive in S. Romão just follow the signs to the house.



Casa Antiga B
Open all year

Facilities | Activities

Bar; Meals available on request; Gardens; Swimming pool; Walking

Accommodation

6 Bedrooms (4 Doubles and 2 Twins)
1 Apartment for 2 people

Email tilias@solaresdeportugal.pt



Casa Antiga B
Open all year

Facilities | Activities

Library; Table Games; Walking

Accommodation

4 Bedrooms
(2 Doubles and 2 Twins)

Email timpeira@solaresdeportugal.pt



Maria de Lourdes de Azevedo B. C. Mimoso Ruiz
Quinta dos Azevedos · Timpeira · 5000-461 Vila Real · Portugal



Located between rock and flowers, in a scene the rural mountain range of Marão and the city of Vila Real dominate the landscape, Casa da Timpeira shows its beauty, pleasing who passes by. Built in the 14th century and expanded in the 18th century, recently restored, has a history linked to Father António de Azevedo who was Camilo Castelo Branco's teacher on his youth and to whom the latter dedicated his master piece "O Bem e o Mal" (The good and the Evil). A Camilian library is being organised in honour of the great romance writer. An excellent visit for who appreciates good evenings reading in a calm environment.

Location

Timpeira, 1 km from Vila Real.

Approach

From Porto: Take the A4 to Vila Real, once in Amarante take the IP4 to Vila Real, in Vila Real the House is situated between the crossroad of Chaves and the crossroad of Bragança on the left side.

Mário Bernardo de Magalhães e Sousa

Arco de Baúlhe · 4860-212 Cabeceiras de Basto · Portugal



Positioned in the romantic valley of the river Tâmega, Casa da Tojeira is a beautiful 17th Century manor house. This location offers a whole array of leisure activities, including cycling, rambling, swimming, hunting and fishing. Recently restored in 1979, this manor house has retained its former glory. In nowadays the Casa da Tojeira produces the famous Vinho Verde and, in harmony between the past and the present, provides to its guests a pleasant stay with all the comfort.

Location

Arco de Baúlhe, 6 km from Cabeceiras de Basto.

Approach

From Oporto Airport: Take the A3 Road for Braga, turning off for the A11 to Guimarães, following the direction to Cabeceiras de Basto. Leave the motorway in Arco de Baulhe, and after pay the toll, follow the direction to Arco de Baulhe and from there follow the direction to Fafe. Around 1 km you will see a sign, saying Casa de Tojeira, on the right where you will see the house.

**Casa Antiga A**

Open all year

Facilities | Activities

Bicycles; Gardens; Gymnasium; Indoor swimming pool; Sauna; Seminars; Turkish Bath; Walking; Wine Tasting

Accommodation

7 Bedrooms (3 doubles and 4 twins)
5 Apartments for 2 persons

Email tojeira@solaresdeportugal.pt**Manuel Correia Malheiro**

Facha · 4990-601 Ponte de Lima · Portugal

**Casa Antiga B**

Open all year

Facilities | Activities

Games room; Gardens; Swimming pool; Walking; Wine Tasting

Accommodation

3 Bedrooms (1 Double and 2 Twins)
2 Apartments for 4 people

Email torres@solaresdeportugal.pt

Visitors to Casa das Torres are greeted by a lofty gateway, which invites you into the spacious courtyard. This manor is a fine example of 18th Century architecture during the reign of King D.João V. Note the lovely Baroque details around each window. Visitors here will be treated to a splendid view of the lavish green countryside of the Alto-Minho. With a fantastic view, guests can appreciate the orchards are fertile and the famous wine Vinho Verde Loureiro, produced in the property, is one more reason of visit Casa das Torres.

Location

Facha, 6 km from Ponte de Lima.

Approach

From Porto Airport: Take the motorway A3 to Braga/Valença. At the km76 leave the motorway in the exit signposted Ponte da Barca/Ponte de Lima. After paying the toll, turn right to Ponte de Lima. 2 km after you will come to a roundabout, continue straight on and 1,5km after you will find another roundabout. Turn right to Viana do Castelo and 500m after you will come to a third roundabout just before the bridge. Turn left here onto the road signposted Darque, Barcelos and Porto continue along this road for 3km until de village of Seara, then turn left again and follow direction to Barcelos. As you arrive at the village of Facha, you will see Casa das Torres on your right hand side. The drive leading to the house is a small lane sloping downwards leading towards the main building of the house.

Isidora Reguela de Sousa Girão

Oliveira · 5040-211 Mesão Frio · Portugal



The balance between the profile of the house of Torres de Oliveira, and richness of its granite freestone, endorse it as a magnificent manor from the beginning of the 18th century, in the region of the Douro. It was built in a carefully selected area, which not only allowed it to head a vast farming estate of 30 ha producing Port Wine, but also enjoys a beautiful landscape, in which the Douro River winds slowly down towards the sea. This house has very comfortable rooms where it is a pleasure to rest, while tasting the good wines produced in the property.

Location

Oliveira, 8 km from Peso da Régua.

Approach

From Porto Airport: Take the A4 motorway to Vila Real/Amarante. Exit the A4 at junction 17 and take the road N101 south towards Mesão Frio. Pass through Mesão Frio and take the road N108 to Peso da Régua. After 6 km you will see a small bridge, turn left before crossing the bridge, following the sign to Oliveira. Continue for approx. 3km until you reach the T-junction. Turn left here following signs to Oliveira. The house is on the left after approx. 100 m.

Casa Antiga A

Open from April to October

Facilities | Activities

Chapel; Meals available on request;
Gardens; Swimming pool; Walking;
Wine Tasting

Accommodation

4 Bedrooms
(3 Doubles and 1 Twin)

Email

torresoliveira@solareshdeportugal.pt

**Pedro Sampaio Nunes**

3050-511 Vacariça · Mealhada · Portugal

**Casa Antiga B**

Open all year

Facilities | Activities

Bicycles; Gardens; Swimming pool;
Tennis; Walking

Accommodation

2 Double Bedrooms
2 Apartments for 2 people

Email vacarica@solareshdeportugal.pt



Located in the village of Vacariça, near Mealhada, the Solar da Vacariça is a manor house in a farming state, with architecture dating from the 16th century. In its history we can note D. Pedro II, King of Portugal, who spent the night here in 23rd of August 1704, during the time of the war with Spain. A few days in this manor house are certainly the best cure for the modern society stress, not only by the excellent location and its calm environment but also by the hospitality of the Sampaio Nunes family.

Location

Vacariça, 4 km from Mealhada.

Approach

From Oporto Airport: Take the Auto Estrada, motorway, A1 towards Lisbon, turning off at the exit to Mealhada. Make your way to Mealhada. From Mealhada take the N 234 towards Luso and Viseu, on this road make a left turn to Vacariça the house is situated in Vacariça.