

*“Special places to stay”*

The ‘Hiše s tradicijo’ in Slovenia are distinguishable for their tradition and character, which have been bestowed upon them by their former owners. Their traditional ambience and homeliness blend into a touch of romanticism. Quality accommodation is complemented by a carefully preserved natural environment, as well as by the healthy, varied gastronomy based on lovingly created home produce. These houses invite visitors to try a different, richer holiday experience in a unique atmosphere.

HIŠE S TRADICIJO

Mala ulica 8
1000 Ljubljana · Slovenia
Tel [+386] 1 434 2660
Fax [+386] 1 434 2464
Email info@hisestradicijo.com
www.hisestradicijo.com

**HIŠE S TRADICIJO**

The tradition of a building is reflected in its architecture and decoration, but above all through personal contact with the host family. The host can prepare a traditional dinner on request, and is always pleased to explain the main features and past history of both the house and the local area. Besides this, guests can enjoy themselves and relax in the quiet surroundings, visit any of the numerous natural wonders of Slovenia, get acquainted with the cultural heritage and gastronomy of the region, sample the excellent Slovenian wines or choose from one of the many options for outdoor leisure activities, such as cycling, horse-back riding, golf, alpine and cross-country skiing, swimming, hiking or fishing.

The “Hiše s Tradicijo” are in three categories, according to traditional diversity in architecture, furniture, customs and gastronomy. The category is not influenced by the various types of building.

- A** Castles, Mansions, Manors
- B** Country estate houses and “bourgeois” houses
- C** Plain rural buildings

The fulfilment of requirements for the lowest, 3rd category is a fundamental condition for the building to be included in the “Hiše s Tradicijo” network and the basis for awarding the “Hiša s Tradicijo” symbol of specialization.

- 01 FIRBAS · Cerkvonjak, Cogetinci
- 02 KLET TREBČE · Bistrica ob Sotli, Podsreda
- 03 LOČNIKAR · Vitanje, Skomarje
- 04 PLESNIK · Solčava, Logarska dolina
- 05 SLAMAR · Bloke, Nova vas
- 06 SORŽEV MLIN · Vojnik, Nova cerkev
- 07 ŠERUGA · Novo mesto, Sela pri Ratežu
- 08 ZDOLŠEK · Šentjur pri Celju, Ponikva
- 09 ŽELINC · Cerknno
- 10 MATJAŽEVA DOMAČIJA · Novo mesto, Paha
- 11 SALARO · Piran, Sečovlje



Mr. Alojz Firbas

Cogetinci 60 · SI-2236 Cerkvjenjak · Slovenia



The Firbas country home is in the typical architectural style of this part of Slovenia. This 160-year-old home is on the top of a hill, slightly apart from its neighbours. The homestead includes a stable with horses, cattle, goats, rabbits and chickens, a fruit orchard, vineyard, and home-grown vegetables. The landlady makes superb domestic dishes accompanied by homemade fruit juices and wine.

Children are keen to help with the farm chores, go horse riding or on horse-and-buggy rides. There is also a beach volleyball court, a small football field, and an archery area. Guests can hire a bike and set off to visit the numerous mineral springs and other natural attractions in the area.

Location

Cerkvenjak, Cogetinci

Approach

From Brnik airport (which is 188 km from Firbas), join the A2 motorway following signs for Ljubljana. Follow the signs into Ljubljana, and then for Maribor onto the A1 motorway. At Farm (142 km) turn right onto the E57 (route 430) and pass Maribor. Exit Maribor on the E57 / E59 / Route 437 and turn right on Route 3 toward Lenart v Slovenskih Goricah. At Lenart, turn right towards Osek, Brengova, Komarnica, Cogetinci. At Cogetinci turn right on Ivanjski vrh to Firbas.

**Mrs. Marija Smalčič**

Trebče 82a · SI-3256 · Bistrica ob Sotli · Slovenia

**Annual closing**

Open all year

Facilities | Activities

Cycling, fishing, hiking, bathing in health spa, mushroom-picking. Visiting cultural and natural attractions, such as Kozjansko park, Podsreda and Pilštajn with pillory, Podsreda castle, Sveta Gora, Repnice.

Accommodation

2 apartments (1 for 3 people and 1 for 2)
All rooms with shower/toilet.

Email klet.trebce@siol.net

Klet Trebče lies in the midst of a vineyard offering a fascinating view of the valley. This traditional homestead was built in 1724, which is engraved in the stone. The family are beekeepers and winegrowers. Guests have the opportunity to pick mushrooms and medicinal herbs, go fishing and cycling. Interesting places to visit in the area include the Olimia health spa, Podsreda castle, Levstik mill, and Sveta Gora, which is a place of pilgrimage.

Visitors like to return to Klet Trebče for its good, hearty domestic meals. Some of the specialties include buckwheat bread with cold cuts, buckwheat with sauerkraut and a glass of excellent homemade wine.

Location

Bistrica ob Sotli, Podsreda

Approach

From Brnik airport (125 km from the farm), follow the signs for Ljubljana onto the A2 motorway. Then in Ljubljana, follow the signs for Maribor onto the A1 motorway. At Celje – Dramlje (78 km) take route 423 towards Šentjur, pass Šentjur and follow signs for Podsreda. At Podsreda (123 km) drive towards Bistrica and after Bistrica turn left to Trebče.



Mr. Slavko Ločnikar
Skomarje 47 · SI-3214 Zreče · Slovenia



The Ločnikar homestead lies in the village of Skomarje in the Pohorje hills. It is more than 400 years old and has preserved its typical village architecture. Guests can visit the cultural attractions in the village, go bathing in the nearby Zreče health spa, visit the Rogla ski centre and many other places of interest, including Črno Lake, the Lovrenc Lakes and Mt Brinjeva Gora.

Guests can make themselves at home, help with the farm chores and cooking, or simply witness the making of such domestic delicacies as minced meat, roast lamb and Pohorje omelette. The family also makes homemade blueberry brandy and natural juices, which go well with domestic dishes.

Location
Vitanje, Skomarje

Approach
From Brnik airport (146 km from the farm), follow the signs for Ljubljana onto the A2 motorway, then in Ljubljana follow the signs for Maribor onto the A1 motorway. Leave the motorway following signs for Slovenske konjice. From Slovenske konjice, follow signs for Zreče on route 701 and at Zreče turn left toward Resnik, then turn left again to Ločnikar at Skomarje.

Annual closing
Open all year

Facilities | Activities
Fishing, mushroom-picking, hiking, bathing in health spa, skiing. Visiting cultural and natural attractions, including the Skomar house, an old smokehouse, Črno Jezero (Black Lake) and the traditional festivities attached to the annual killing of a pig.

Accommodation
5 Bedrooms (2 double, 1 triple rooms, 2 rooms for 4 people)
All rooms with shower/toilet.

Email locnikar@siol.net



Mrs. Mija Plesnik
Logarska dolina 13 · SI-3335 Solčava · Slovenia



Annual closing
Open all year

Facilities | Activities
Cross-country skiing, mushroom-picking, horse-and-buggy rides, hunting, cycling. Visiting cultural and natural attractions, such as Potočka zijalka, the source of the Savinja river, the Raftsman's Ball, hunters' festivities.

Accommodation
5 Bedrooms (4 double, 1 triple rooms)
All rooms with shower/toilet.

Email plesnik.doo@siol.net



The Plesnik family is one of the three oldest and most distinguished families in Logarska Dolina, and were pioneers of tourism in this breathtaking valley in the Kamnik-Savinja Alps. Logarska valley is an ideal starting point for hiking trips in the area, and offers a host of other recreation opportunities, such as cross-country skiing, cycling, mushroom-picking and even hunting.

The family arranges wine tasting in its cellar, where guests are served domestic delicacies, including cold cuts, dairy products and homemade brandy. In the homely atmosphere of good food and wine, the landlord tells guests about the history of the valley and its attractions, which may also be visited with a guide.

Location
Solčava, Logarska dolina

Approach
From Brnik airport (65 km from the farm), follow signs for Kranj. Near Kranj, turn right toward Zgornje Jezersko on route 210. Enter Austria via the Zg. Jezersko mountain pass. Follow the B52 road, and close to Bad Vellach, turn right and go back into Slovenia (56 km). Drive straight on, turn right into Logarska dolina and continue to Plesnik.

Mr. Slavko Starman

Nova vas 45 · SI-1385 Nova vas · Slovenia



The Slamar guesthouse, a magnificent country homestead built in 1857, is in the centre of the breathtaking Bloke plateau. You may explore this oasis of tranquility and unspoilt nature above Cerknica Lake on foot, by bike or on horseback. The ski equipment used by Slovenia's first skiers, who came from the Bloke region, is exhibited at the guesthouse. The Bloke skiers were first mentioned in 1689 by Janez Vajkard Valvasor, a Slovene writer, in his famous work "the Glory of the Duchy of Carniola".

The guesthouse offers a variety of homemade dishes, such as buckwheat, štruklji (cheese dumplings) and žlikrofi (ravioli with a special filling) with sage. You might also like to try the homemade brandy with herbs.

Location

Bloke, Nova vas

Approach

From Brnik airport (84 km from the guesthouse), follow the signs for Ljubljana onto the A2 motorway. Then in Ljubljana follow signs for Postojna and Koper onto the A1 motorway. Leave the motorway at Unec and drive to Cerknica on route 212. Carry on to Bloška polica (the Bloke plateau) and Sodržica on route 212. The Slamar house is signposted on the right at Nova vas.

Annual closing

Open all year

Facilities | Activities

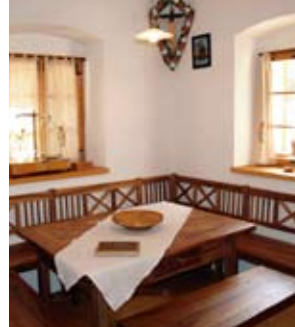
Fishing, cross-country skiing, skydiving, riding school, cycling
Visiting cultural and natural attractions, such as the carnival in Cerknica, Križna and the Postojna Cave, Bloke Lake, Snežnik Castle.

Accommodation

6 Bedrooms (1 single, 4 double rooms, 1 room for 4 people)
All rooms with shower/toilet.

Email penzion.slamar@siol.net**Mr. Oton Samec**

Polže 1 · SI-3203 Nova Cerkev · Slovenia

**Annual closing**

Open all year

Facilities | Activities

Horseback riding, camping, boating, bathing in a health spa, fishing, tennis.
Visiting cultural and natural attractions, including Palm Sunday, the Pekel Cave or the Carthusian monastery in Žice.

Accommodation

3 Apartments
(1 apartment for 3 people,
2 apartments for 5 people)
All apartments with shower/toilet.

Email sorzev.mlin.turist.kmetijai@netsi.net

The friendly Soržev Mlin (Mill) homestead is in the village of Polže, between the Hudinja River and the millcourse. The nearby 700-year-old watermill still turns grain into flour. The homestead also boasts a 'Venetian' sawmill with a huge paddle-wheel, which is occasionally still operated by the landlord. Visitors can purchase whole-grain flour made from rye, buckwheat and corn, and of course, taste the delicious home-baked bread. Alternatively, you may make your own meals from vegetables and fruit grown on the farm. The homestead is an ideal starting point for skiing at the Rogla ski centre and fishing on Šmartinsko Lake. In addition, a neighbor will be happy to take you for a ride on his hay cart or horse-drawn carriage.

Location

Vojnik, Nova cerkev

Approach

From Brnik airport (110 km away), follow the signs for Ljubljana onto the A2 motorway. Then in Ljubljana follow the signs for Maribor onto the A1 motorway. Leave the motorway near Celje following route 430 towards Vojnik. At Vojnik, follow signs for Višnja vas – Dobrna on route 429, and then turn right to Nova vas and Soržev mlin.

Name of the Owner

Sela pri Ratežu 15 · SI-8222 Otočec · Slovenia



The Šeruga homestead is surrounded by forests and a rippling stream. Once the location of a former mill, the Šeruga farm has thrown open its doors to all those in search of peace and quiet, unspoilt nature and delicious homemade dishes. The local area is well known for its domestic crafts and rich cultural heritage, and offers a host of opportunities for sporting activities in a pristine environment.

The Šeruga family will serve you traditional specialties made from organic vegetables and domestic meat. Guests can knead their own dough, catch their own trout in the nearby stream, or help landlord Slavko with the farm chores.

Location

Novo mesto, Sela pri ratežu

Approach

From Brnik airport (101 km from the farm), follow the signs for Ljubljana onto the A2 motorway. In Ljubljana, follow signs for Postojna onto the A1 motorway and then follow signs for Novo mesto and Zagreb onto the A2 motorway (E70). Go past Novo mesto on the A2, following the road as far as Dobrava (Mačkovec) where you should turn right across the river Krka on a local road as far as Šentpeter, then turn right to Dolenjaska vas and left to Sela pri Ratežu. Šeruga is signposted on the left.

**Mr. Martin Zdolšek**

Okrog 16 · SI-3232 Ponikva · Slovenia

**Annual closing**

Open all year

Facilities | Activities

Horse-and-buggy rides, boating, skiing, horseback riding, bathing in health spa, mushroom-picking; Visiting cultural and natural attractions, such as the St. George's Day celebrations, Barbara's fair, the Slomšek homestead and Rifnik.

Accommodation

1 Double bedroom
1 apartment for 6 people
All accommodations with shower/toilet

Email mmzdolsek@excite.com

The Zdolšek homestead was built in 1824. In front of the homestead there is a huge garden, a fruit orchard and a gaily colored beehive attracting attention of every visitor. Nature-lovers might want to pick mushrooms and medicinal herbs or perhaps go fishing. Particularly interesting activities are available to children, who can learn about life on the farm and witness the making of domestic arts and crafts in neighbouring homes. Guests find it easy to relax in the peace and quiet of the Zdolšek country estate. Meanwhile, the family loves to pamper them with traditional dishes, as well as with wine from the home cellar.

Location

Šentjur pri Celju, Ponikva

Approach

From Brnik airport (149 km from the house), follow the signs for Ljubljana onto the A2 motorway. Then in Ljubljana follow the signs for Maribor onto the A1 motorway. Leave the motorway at Celje following signs for Laško, Zidani most and Radeče on route 5. Go through Radeče and turn right onto route 738 towards Tržišče, Brunk and Hotemaže. Drive on as far as Šentjanž, then turn right to Hinje. Drive to Podboršt and Veliki Cirknik, then turn right to Roženberk and then right towards Vrh. At Šentrupert turn left to Škrtjevo, then left to Ravnik and left to Okrog at Zdolšek.

Mr. Peter Brus

Straža 8 · SI-5282 Cerčno · Slovenia



The Želinc homestead has stood in the village of Straža at the confluence of the Idrijca and Cerknica rivers for five centuries. The farm has always been known far and wide, and Straža is often called "At Želin's" by the locals. The surrounding area offers a variety of interesting places to visit. Bikes, parachutes and kayaking equipment can be hired at the homestead. A visit to the interesting museums in Idrija and Cerčno are fascinating alternatives on rainy days.

The landlady makes a variety of domestic delicacies for guests, such as a famous local dish known as 'Idrija žlikrofi' (ravioli with a special filling). Those with a sweet tooth will delight in the mouthwatering walnut rolls and cheese and apple strudel.

Location

Cerčno

Approach

From Brnik airport (55 km from the house), follow signs for Kranj. Near Kranj, turn left following signs for Škofja Loka on route 210. Go through Škofja Loka and continue on route 210 to Gorenja vas and Cerčno.

At Sovodnji turn left onto a local road towards Koprivnik, Jazne and Plužnje. At Lazec, turn right to Straža and Želinc is signposted on the right.

Annual closing

Open all year

Facilities | Activities

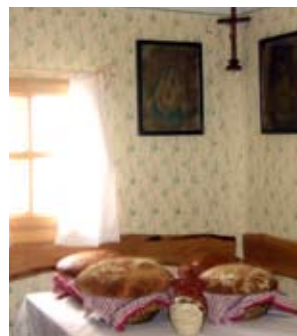
Fishing, hunting, cycling, skydiving, kayaking, hiking. Visiting cultural and natural attractions, including the Franja Partisan Hospital, Ravenska Cave, Divje Babe (site of the oldest pipe in Europe), the lace festival.

Accommodation

13 Bedrooms (6 single, 7 double)
2 apartments for 4 people
All rooms furnished with shower/toilet.

Email info@zelinc.com**Mr. Matjaž Pavlin**

Paha 3 · 8222 Otočec · Slovenia

**Annual closing**

Open all year

Facilities | Activities

Well signed 'Heritage Trails', cycling, fishing and hunting, horse back riding (13 km), panoramic flights (15 km), rafting (25 km), wellness centre (25 km), 28 interesting locations of the Heritage Trails through Dolenjska and Bela krajina.

Accommodation

The use of the whole house with two rooms (3+1 beds), bathroom, sauna, kitchen, garden and barbecue area.

Email kompas.nm.matjaz@siol.com

This 150-year-old rural house has been lovingly restored and features furniture dating back more than a century, a baker's oven and a kitchen-range, a traditional cellar and a modern sauna. It is certainly charming for all lovers of tradition who would like to taste the lifestyle of our grandparents and maybe try to overnight in the hayrack in the summertime. All guests are welcomed with a loaf of bread, local "cviček" wine and home made sausage.

Guests can enjoy beautiful views of the Krka river valley and the nearby Otočec Castle. There is a possibility to rent a bicycle or one can simply take a walk around the wine-growing hills.

Location

Novo mesto, Paha

Approach

From Brnik airport (82 km from the farm), follow the signs for Ljubljana onto the A2 motorway. In Ljubljana follow signs for Novo mesto and Zagreb onto the A2 motorway [E70]. Go past Novo mesto on the A2, following the road as far as Otočec. Leave the road at Otočec and in the centre of the village, turn right and follow the sign to Paha. After the underpass turn right again and then stay on the main road for 3 km until you reach the village of Paha. The house is on the left side of the village.

Family Marsič

Parecag 182 · 6333 Sečovlje · Slovenia



The Salt House (Salaro - Casa del Sal) is on a hillside of the Secovlje Salina Natural Park, where salt making still takes place. It is just 4km from lovely Piran, a Mediterranean town with medieval architecture and a rich cultural heritage, and 2 km from Croatian Istria. Salaro - Casa del Sal was the home of the salt pan workers from the 19th century. Today, it offers visitors accommodation, pampering them with traditional Istrian and Mediterranean dishes of their choice, made from vegetables and fruit grown at the house and served with a glass of homemade wine.

Annual closing

Open all year

Facilities | Activities

Sea fishing, scuba diving, cycling, strolling around the salt pans; Visiting cultural and natural attractions, such as the Mediterranean towns of Piran, Izola and Koper; the salt pan museum and maritime museum

Accommodation

4 Bedrooms (1 double, 3 triple rooms)
All rooms with bathroom

Email info@casadelasal.net

Location

Piran, Sečovlje

Approach

From Brnik airport (142 km from the house), follow signs for Ljubljana onto the A2 motorway. In Ljubljana, follow signs for Postojna and Koper onto the A1 motorway. After Koper, follow signs for Portorož and Sečovlje towards the Croatian border on route 111. Near Seča and Sečovlje, the salt pan is on the right; the house is signposted on the left, on a local road on the hill.

