

**Amélia do Nascimento Pereira**

Roseira · 4990-297 Ponte de Lima · Portugal



This manor house from the end of the last century was built from an ancient farm house and has a most exceptional panorama over the village of Ponte de Lima and river. The house, offering all of the modern comforts is the perfect choice for those who appreciate the tranquility of this region either for a pure relaxed stay or for getting to know Minho region. This house, a typically agricultural house located in a rustic farm, has leafy trees on the outside and variety spaces for rest.

**Quinta e Herdade C**

Open all year

**Facilities | Activities**

Gardens; Swimming pool; Walking

**Accommodation**

6 Bedrooms  
(4 Doubles and 2 Twins)

**Email** [roseira@solaresdeportugal.pt](mailto:roseira@solaresdeportugal.pt)

**Location**

1 km from Ponte de Lima.

**Approach**

From Porto Airport: Take the motorway A3 to Braga/Valença. At the km 76 leave the motorway in the exit signposted Ponte da Barca/Ponte de Lima. After paying the toll, turn right to Ponte de Lima. 2 km after you will come to a roundabout, continue straight on and 1,5km after you will find another roundabout. Turn right to Viana do Castelo and 500m after you will come to a third roundabout just before the bridge. Here turn left signposted Darque and Barcelos and after 1 km turn left following a signpost to the house. In 500m you will the entrance of the house on your left.



**Jorge Henrique Carvalho de Campos**

S. Bento da Várzea · 4755-536 Várzea · Portugal



**Quinta e Herdade C**

Open all year

**Facilities | Activities**

Chapel; Gardens; Horses; Seminars; Swimming pool; Walking

**Accommodation**

6 Bedrooms  
(3 doubles and 3 twins)

**Email**

[santacomba@solaresdeportugal.pt](mailto:santacomba@solaresdeportugal.pt)

Pay a visit to Quinta de Santa Comba, and experience a step back to the farming days of years ago. This pastoral house, with its characteristic stonewalls and a wooden beam guarantees a warm welcome for its guests. Integrated within this homestead is a beautiful chapel, a haven for quiet relaxation at the end of the day. Guests can taste the famous wine Vinho Verde produced in this farm, and also meet the horses and the cows, participating in the activities of the house.

**Location**

Várzea, 4 km from Barcelos.

**Approach**

From Oporto Airport: From Porto Airport: Take the Northern coastal road A28 to Viana do Castelo/Valença. Turn right at Junction 18, Braga Barcelos. Take A11, m-way, to exit 3, Barcelos. At Barcelos, take the road sign posted for Famalicão. In approx. 5km, you will see a small yellow sign [can be difficult to spot, but look out for the white house situated on the corner of this turning] for Quinta de Santa Comba on the left hand side. Take this turning, then turn first left. Keep bearing right, following the yellow signs. You will then see a narrow lane surrounded by vineyards. Follow this up to the house.



**Judite Ranhada Alves Moreira**

Sá · 4950-740 Monção · Portugal



Close to the Peneda-Gerês National Park, this farm was bought by a Brazilian emigrant and renovated in the 19th Century, adapted from a spinning room and bakery.

Relax on the pool-side terrace with its spectacular view, and watch the sun slip slowly behind the distant mountains.

Close to Monção, Melgaço, and Minho river, Quinta de Santo António allows guests to discover this rural region.

**Quinta e Herdade C**

Open all year

**Facilities | Activities**

Bar; Meals available on request; Games room; Gardens; Seminars; Swimming pool; Walking

**Accommodation**

5 Apartments for 2 people  
1 Apartment for 4 people

**Email**

santoantonio@solaresdeportugal.pt

**Location**

Sá, 12 km from Monção.

**Approach**

From Oporto Airport: Take the motorway A3 in direction to Valença. In Valença take the N101 to Monção. In Monção don't go into town and continue in the road sign posted to Melgaço. After 12km, turn right following the signpost "Turismo de Habitação"/"Sá". Immediately after turn right again following signpost "Quinta de Santo António" and 1 km after turn left following the signpost and you will find the house, on the right.

**Álvaro Gil Quelhas Antunes de Azevedo**

Prado · 4730 - 460 Vila Verde · Portugal

**Quinta e Herdade C**

Open all year

**Facilities | Activities**

Chapel; Meals available on request; Games room; Gardens; Swimming pool; Tennis; Walking

**Accommodation**

5 Double rooms

**Email** saobento@solaresdeportugal.pt

The origin of this manor house with its coat of arms, and chapel, dates back to the mid-17th century. Located in the valley of the river Cávado, at the heart of Minho, quite near the town of Braga. At Quinta de São Bento, guests can experience the way of living in a manor house, enjoying the rural atmosphere. The area is very rich in terms of historical, cultural and religious heritage, as well as in its handicrafts which is linked to the ancestral origins of its people.

**Location**

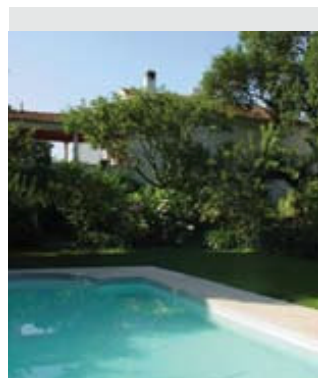
Vila de Prado, 6 km from Braga.

**Approach**

From Oporto Airport: take the motorway A3 to Braga, turning off at Celeirós exit. After paying the toll turn right in direction to Braga. In Braga follow the direction to the railway station. At the roundabout turn left towards Prado/Ponte de Lima. Continue straight on 5km, you will cross the roman bridge of Prado and the town upon reaching a roundabout, turn left in the way to Barcelos. 500m after, in opposite of the Church, turn left and you will find the gatehouse with the name on the wall.

Lígia Branca de Carvalho O. Gala Mexia Leitão

S. Lourenço do Bairro · 3780-179 Anadia · Portugal



In the Bairrada region, the house is part of an estate with vineyards and orchards. In the 19th Century it belonged to the first Viscount Seabre, who prepared Portugal's Civil Code that was in force from 1867 to 1966. It's an ideal place to visit the Luso and Curia Regions.

**Quinta e Herdade B**

Open all year

**Facilities | Activities**

Games room; Gardens; Seminars; Swimming pool; Walking; Wine Tasting

**Accommodation**

6 Bedrooms (4 doubles and 2 twins)  
1 Apartment for 2 persons.

**Email**

saolourenco@solaresdeportugal.pt

**Location**

São Lourenço do Bairro, 5 km from Anadia.

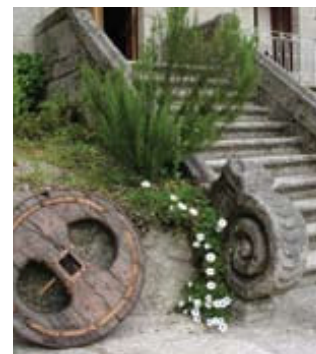
**Approach**

From Oporto Airport: Take the motorway, A1 towards "Lisboa". Turn off on the exit signposted "Mealhada". In Mealhada take N1 to north in direction to Curia. After 2 km you will pass the T-junction to Curia. Here you must continue in the same road (N1) and after 3km, on the roundabout, turn left following the signposts "Vagos", "Mogofores" and "Agro-Turismo" (blue signpost related to the house) and you will immediately cross the bridge over the railway. After 500m turn left following another blue signpost "Agro-Turismo" and 1,5 km turn left and you will find the house 50m after on the right.



Fernanda Martins Vieira da Rocha

Cibrão Caniçada cp248 · 4850-261 Parada de Bouro · Portugal



**Quinta e Herdade C**

Open all year

**Facilities | Activities**

Chapel; Meals available on request; Horses; River nearby; Swimming pool; Walking

**Accommodation**

3 Double rooms  
2 Apartments for 4 people

**Email** sorilhal@solaresdeportugal.pt

As you approach the Quinta do Sorilhal you will see a typical manor house from the countryside in a rustic environment. This house is located between the Santa Maria do Bouro Monastery and Caniçada Dam very close of Cávado river and National Park of Gerês.

Quinta do Sorilhal is a perfect house for exploring the mountainous region of National Park of Gerês., ideal to the ecological tourism and mountain tourism. This house also provides meals with biological products of the farm: the meats, the vegetables, the wine, the honey. Quinta do Sorilhal has traditional meals as well.

**Location**

Parada de Bouro, 3 km from Vieira do Minho.

**Approach**

From Oporto Airport: take the motorway A3 to Braga. Arriving in Braga take the N103 road in directions to Chaves, following this road for 24-km approx. till you find signpost called Cerdeirinhas. After T-junction of Cerdeirinhas, turn to your left till find Caniçada Dam, follow this road during 1 km and Casa do Sorilhal is located at your left.



**Maria da Glória Baptista Simões**  
6270-555 Torrozeleto · Seia · Portugal



Built in the end of the 19th century, the house is located in a beautiful farm near the Serra da Estrela National Park. It has prominent location with a magnificent view of the mountains. Carefully decorated it offers its guests a comfortable stay in a quiet environment.

**Quinta e Herdade C**  
Open all year

**Facilities | Activities**

Gardens, Swimming pool; Tennis; Walking

**Accommodation**

3 Bedrooms  
(1 Double and 2 Twins)

**Email** torrozeleto@solaresdeportugal.pt

**Location**

Torrozeleto, 8 km from Seia.

**Approach**

From Porto: follow the A1 Sul towards Lisbon. Exit the motorway in the junction signpost A25/IP5/Visu. In Visu follow the N231 road in direction of Seia, driving through Nelas. Just before arriving in Seia, turn right to the N17 road towards Oliveira do Hospital. After app. 8 km, you pass the village of Torrozeleto. Shortly after, take the first turning on the right at the sign for the village of Folhadosa. You will see a pair of iron gates on the right. Immediately after, turn right down a narrow track. This leads to the house.



**François Goris**  
Corte de Sines · 7750-311 Mértola · Portugal



**Quinta e Herdade C**  
Open all year

**Facilities | Activities**

Meals available on request; Fishing; River nearby; Swimming pool; Walking

**Accommodation**

5 Twin Bedrooms

**Email** valecovo@solaresdeportugal.pt

Herdade de Vale Covo is an agro-tourism farm with 184 hectares within the Natural Park of the Guadiana valley, in Alentejo. The farm purpose is the production of quality organic products; maintenance and improvement of the environment. It is dedicated mainly to essential oil production proceeding from aromatic and medicinal plants, cultivated in biological production way. The house is from the 40's, a privileged place for hunting and lodging. The mount was restored, respecting traditional architecture, offering the comfort of a modern habitation. Here, guests can participate on the activities of the house, travelling around the essences world of rosemary, rockrose and other plants, and visiting the distillery of the exploration.

**Location**

Corte Sines, 19 km from Mértola.

**Approach**

From Lisbon Airport: follow the motorway A2 in direction to Algarve until find the exit to Castro Verde. There follow the indications to Mértola and arriving there, follow the indications to "Minas de São Domingos". About 4 km later, turn left in direction to Corte Sines. Drive until the village of Corte Sines. Just before the village you will find on your left side the indications to Vale Covo. Follow that dirt road for 2 km and then you will find the gate of Herdade de Vale Covo.



**Fernando Teixeira de Almeida**

Sto. Estêvão - Bastuço · 4750-081 Barcelos · Portugal



This granit house, dating from the early 18th century, was completely rebuilt in 1992 keeping all the characteristics of its rural setting and comfortable accommodations. It stands in a quite rustic environment with a lovely peaceful view and it is surrounded by cultivated land with fruit-trees. Nearby the place where it stands (Santo Estevão de Bastuço) there are historic cities like Braga (8 km) and Barcelos (18 km). This house is located in Vinho Verde region, allowing guests to taste it, a delicious aperitif to discover the history of the area.

**Quinta e Herdade C**

Open all year

**Facilities | Activities**

Swimming pool, Gardens, Central heating, Table tennis.

**Accommodation**5 Bedrooms (4 Doubles and 1 Twin)  
1 Apartment for 2 people**Email** sourinho@solaresdeportugal.pt**Location**

Bastuço, 10 km from Braga.

**Approach**

From Oporto Airport: Take the A3 motorway to Braga/Valença. After approx. 50 km exit the motorway in the junction signposted Braga Oeste / Barcelos, and follow the direction of "Martin". After paying the toll turn left to Braga and 900 m after turn right following the signpost "Passos - S. Julião". Continue for approx. 3,2 km and you will come to a crossroad with a stone cross on the left, turn right and 200 m after you will find the house on the right side.

**Alda Ferreira Matos Martha**

Av. Marnoco e Sousa, 38 · Penedo da Saudade · 3000-271 Coimbra

**Casa Rústica C**

Open all year

**Facilities | Activities**

Games room; Gardens; Swimming pool; Walking

**Accommodation**3 Bedrooms  
(1 Double and 2 Twins)**Email**

aldamartha@solaresdeportugal.pt

Situated in front of Peneda da Saudade, it is one of Coimbra's most romantic places. With a garden and a belvedere strongly related to Coimbra's traditions. Besides this privileged location, located a few minutes away from the University and Historical Center, the house gives an opportunity to discover Coimbra and his traditions.

Very nice to visit during the traditional "Queima das Fitas" or for those o prefer to discover the heritage and patrimony of Coimbra. This manor house is a perfect place to rest and to have a nice conversation with the owner.

**Location**

Coimbra

**Approach**

From Porto/Lisboa: Go from the A1 leaving in direction to Coimbra and to the center of the city. There follow the directions to the "Penedo da Saudade". The Alda Martha house is in front of the mention belvedere.



**Maria do Céu Gonçalves Ferreira**

Cabreiro · 4970-100 Arcos de Valdevez · Portugal



Situated in the National Park of Peneda-Gerês, Casa de Avelar is a cosy, rustic house in keeping with its arcadian setting. Having an enviable panoramic view of Gerês, in a tranquil isolation, Casa de Avelar is paradisiacal for those o love the calmness, the nature or wants to visit the lost villages. Perfect for families or small groups that want to have unforgettable holidays. Explore this beautiful region on horseback, meet local people from all walks of life, and a wide variety of flora and fauna species.

**Location**

Cabreiro, 18 km from Arcos de Valdevez.

**Approach**

From Porto Airport: Take the motorway A3 to Braga/Valença. After 77 km leave the motorway in the exit signposted Arcos de Valdevez. After paying the toll, follow the IC28 until Arcos de Valdevez. At Arcos de Valdevez, follow the main road through the town, and take the road signposted to Monção. After 8km turn right towards Vilela. Continue and then turn right across a Roman bridge by the chapel, following the signs for Vilela. Turn left at the next T-junction, and continue for 3.5km to Cabreiro. Turn right here on the road signposted to Avelar. After approx 3km this road turns to an unmade track. Follow this for a further 4km, ignoring the left hand fork to the village of Avelar. The house is located 1km further on, on the left hand side. Take the driveway up to the house.

**Casa Rústica C**

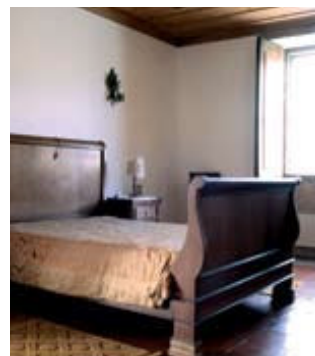
Open all year

**Facilities | Activities**

Swimming pool; Walking

**Accommodation**

4 Bedrooms  
2 doubles, 1 twin and 1 room with 2 bunk beds).

**Email** [avelar@solaresdeportugal.pt](mailto:avelar@solaresdeportugal.pt)**Casa Rústica C**

Open all year

**Facilities | Activities**

Bicycles; Gardens; Walking

**Accommodation**

2 Apartments for 2 people  
1 Apartment for 4 people

**Email** [covas@solaresdeportugal.pt](mailto:covas@solaresdeportugal.pt)**Maria Fernanda Mimoso Lemos**

Moreira do Lima · 4990-670 Ponte de Lima · Portugal



Completely surrounded by vineyards, Casa de Covas is a delightful country house, dating from the late 17th Century. This granite house integrates an agricultural exploration and is totally prepared to welcome who intends to have some days of complete calmness with all the comfort. Beyond the pleasant interior decoration, Casa de Covas has a very friendly way to welcome visitors. This is the perfect base for walking and cycling in the neighboring countryside.

**Location**

Moreira do Lima, 6 km from Ponte de Lima.

**Approach**

From Oporto Airport: Take the motorway A3 to Braga/Valença. At the km76 leave the motorway in the exit signposted Ponte da Barca/Ponte de Lima. After paying the toll, turn right to Ponte de Lima. 2 km after you will come to a roundabout, continue straight on and 1,5km after you will find another roundabout. Turn right to Viana do Castelo and 500m after you will come to a third roundabout just before the bridge. Continue straight crossing the river Lima. On the roundabout continue towards Viana do Castelo, on the EN202, for a further 2km, and take the turning on the right signposted Estorãos. Continue for 4km until arriving at Moreira do Lima, where you will turn right at the signpost for Casa de Covas (You will see the school on your left hand). Turn next right, following the signposts, and the house is situated on the left hand side about 100m along this narrow lane.

**Germano Costa Fonseca**

Gondomil - Laços · 4930-694 Valença · Portugal



Casa da Eira dates back to the 17th century and was built by monks that belonged to the Convent of Sanfins de Frietas. It stopped being farming house and it was completely restored and adapted to welcome guests maintaining its "Eira" (threshing floor) and "Espigueiro" (the original granary). It is surrounded by a calm garden organized in "so-calcos" enjoying an excellent view over the Minho Valley, and over the beautiful landscape of the area. Casa da Eira is located between Valença and Monção, allowing a visit to these small but historical and beautiful villages.

**Location**

Gondomil, 8 km from Valença.

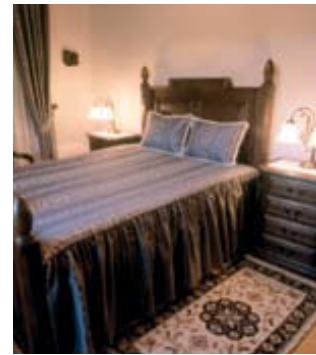
**Approach**

From Porto Airport: Take the motorway A3 in direction to Valença. In Valença take the N101 to Monção. 8 km after turn right when you find a sign that indicate Gondomil, and 700 m after turn right again and you will find the House in left side of the road.



**Horácio Antas Fernandes**

Cabração · 4990-570 Ponte de Lima · Portugal



**Casa Rústica C**

Open all year

**Facilities | Activities**

Bar; Gardens; Swimming pool; Tennis; Walking

**Accommodation**

6 doubles rooms

**Email**

encruzilhada@solaresdeportugal.pt

At Casa da Encruzilhada, located on the village of Cabração, you will appreciate a magnificent view over the Mountain. Total isolated, in a calm and pure ambience, the house invites you the make a journey in the "Serra d'Arga". The house was rebuilt and adjusted to the modern comfort conditions, the house is an inviting retreat from the city stress. Perfect to remember old times and the history of the region and to those who love ecotourism.

**Location**

Cabração, 10 km from Ponte de Lima.

**Approach**

From Oporto Airport: Take the motorway A3 to Braga/Valença. At the km 76 leave the motorway in the exit signpost Ponte da Barca/Ponte de Lima. After paying the toll, turn right to Ponte de Lima. 2 km after you will come to a roundabout, continue straight on and 1,5km after you will find another roundabout. Turn right to Viana do Castelo and 500m after you will come to a third roundabout just before the bridge. Continue straight crossing the river Lima.. Continue towards Viana do Castelo on the EN202 for a further 2km, and take the turning on the right signpost Estorãos (you will also see some blue signposts for several houses in the village of Estorãos). Continue for 10km, and in the village of Cabração you will find the house in the right side of the road.



**Ernesto Martins Ferreira**

Estorãos · 4990-590 Ponte de Lima · Portugal



The house is situated in Viana do Castelo. The Faria Araújo family who still resides there today purchased Casa do Ameal in 1669 for just 3,500 shillings. It is thought to have been built in the 16th Century, although no exact date is known. In keeping with traditional Minho noble houses the entrance courtyard is adorned with a stone fountain and pond. The proprietors of Ameal have thoughtfully provided an authentic handicrafts and folkloric display, and exhibit antique costumes belonging to their ancestors.

**Location**

Estorãos, 7 km from Ponte de Lima.

**Approach**

From Oporto Airport: Take the motorway A3 to Braga/Valença. At the km 77 leave the motorway in the exit signposted Arcos de Valdevez. After paying the toll, follow the A27 in direction to Viana do Castelo. Leave the A27 on the exit signposted "Estorãos / Lagoas". On the roundabout turn left following the signs to Estorãos. After 1 km you will arrive to a small roman bridge. The mill is on the left side of the bridge.

**Casa Rústica B**

Open from April to October

**Facilities | Activities**

Fishing; River nearby; Walking

**Accommodation**

1 Apartment for 2 people  
2 Apartments for 4 people

**Email**

moinhoestoraos@solaresdeportugal.pt

**Casa Rústica C**

Open all year

**Facilities | Activities**

Billiards; Gardens; Seminars; Swimming pool; Walking

**Accommodation**

6 Twin bedrooms

**Email** foral@solaresdeportugal.pt**Carlos Higgs Madeira**

Rua da Boavista 10 · 2040-302 Rio Maior · Portugal



Traditional construction of the Ribatejo region from the end of the last century, situated on a small rural town, Rio Maior. The same Family have owned the house for four generations, it recently underwent some changes from the purpose of installing modern facilities for welcoming tourists. The name of the Casa do Foral originated from the fact that the various lands and houses off the surroundings payed the "Foro ou Foral" by ancient ownership of the family. Every room has a private bathroom, central heating and air ventilated bathrooms. In one of the rooms in the house, we can see walls decorated with traditional azulejos originating from the end of the 18th century. In the garden there is a recreational space which allows the guests, to watch television, read and play snooker.

**Location**

Rio Maior.

**Approach**

From Lisbon Airport: take the motorway A1/Norte in direction of Porto. Leave the motorway in the junction signposted Rio Maior / Aveiras / Caldas da Rainha, and then follow the directions of Rio Maior. In Rio Maior the house is located in Rua da Boavista, near the centre.

**João António da Cunha Rodrigues Cruz**

Estorãos · 4990-590 Ponte de Lima · Portugal



The proud hosts of this cosy, rustic cottage have given it many personal touches, allowing the visitor to feel very much at home. Estorãos, which provides the setting for Casa da Gaiba, is a most captivating, peaceful village.

Casa da Gaiba has a kitchen, a living room and two rooms; this rustic house was beautifully recovered and now welcomes guests with sympathy, providing relaxation to those who search the beauty of the region.

**Casa Rústica C**

Open all year

**Facilities | Activities**

Fishing; River nearby; Walking

**Accommodation**

1 Apartment for 4 persons

**Email** gaiba@solaresdeportugal.pt

**Location**

Estorãos, 7 km from Ponte de Lima.

**Approach**

From Oporto Airport: Take the motorway A3 to Braga/Valença. At the km 77 leave the motorway in the exit signposted Arcos de Valdevez. After paying the toll, follow the A27 in direction to Viana do Castelo. Leave the A27 on the exit signposted "Estorãos / Lagoas". On the roundabout turn left following the signs to Estorãos. After 1 km you will arrive to a small roman bridge, cross the bridge and immediately turn right after the bridge. Casa da Gaiba is to be found on the right hand side of this small lane in about 100m.



**Maria do Rosário D. S. Coutinho de Calheiros e Menezes**

Abade do Neiva · 4750-001 Barcelos · Portugal



**Casa Rústica C**

Open all year

**Facilities | Activities**

Gardens; Swimming pool; Tennis; Walking

**Accommodation**

6 Bedrooms  
(2 Doubles and 4 Twins)

**Email** monte@solaresdeportugal.pt

Beautifully designed gardens at Casa do Monte beckon you to explore every nook and cranny under the shade of its pines and oaks. The interior is decorated with local furniture; charming wooden pieces with brightly painted floral designs. Climb up to the characteristic veranda and enjoy panoramic views of Barcelos town and the Cávado valley. For those who love nature, the owner organizes pedestrian tours or walks on request to discover the region. Casa do Monte is perfect for those look for peace and relaxation.

**Location**

Abade do Neiva, 3 km from Barcelos.

**Approach**

From Porto Airport: Take the A3 to Braga and leave the motorway in the exit to Braga/Barcelos. After paying the toll turn right to Barcelos. On arrival to Barcelos (you don't go into town) continue until you find a right turn to Viana do Castelo. Turn right and in a short while, you will see a road leading to the right sign posted to Abade do Neiva follow that road. Take this turning, and in approximately 1.5km you will find the house located on the left hand side. The name of the house is written on the gates on a tiled nameplate.



**Mário Trigo Cortez Pereira**

Rua das Portas de Beja 43 · 7830-431 Serpa · Portugal



Casa da Muralha is located in one of the entrances of the wall that delimits the historical center of Serpa. It was constructed in the 19th century by the ancestral of Mário Trigo Cortez Pereira. The bedrooms are organized in order to guarantee privacy and independent entrance. There are four bedrooms typically decorated. The breakfast is composed of local products. The local activities are fishing fishing, hunting, bird watching, mostly in non-farmed lands and near water ways. The surrounding rugged farmlands, dotted with olive and cork trees, are ideal for cycling, horse-back riding, swimming, hiking and canoeing.

**Location**

Serpa

**Approach**

From Lisboa: Follow the A2 and leave at km 120 (exit number 10) to Beja. Take the EN259 and the EN121 (IP8) to Beja. In Beja, follow the EN260 to Serpa/Spain. Leave the EN260 in the first exit to Serpa. Casa da Muralha is located near the Portas da Muralha de Serpa (Serpa Wall Doors) - Portas de Beja (Beja Doors) – easy to find because there is an aqueduct in that wall.

**Casa Rústica C**

Open all year

**Facilities | Activities**

Fishing; Gardens; Hunting; Walking

**Accommodation**4 Bedrooms  
(1 Double and 3 Twins)**Email** muralha@solaresdeportugal.pt**Casa Rústica B**

Open all year

**Facilities | Activities**

Gardens; Swimming pool; Walking

**Accommodation**5 Bedrooms  
(3 Doubles and 2 Twins)**Email** palmeirinha@solaresdeportugal.pt**José Manuel Júdice Glória**

R. da Igreja, 1 · Mexilhoeira Grande · 8500-132 Portimão · Portugal



This typical old rural Algarve house, whose origins go back to the 16th century, is totally restored. It is located in a village where the effects of tourism are still little felt. It lies by the Alvor estuary at a short distance from Lagos and Alvor beaches and Serra de Monchique.

Casa da Palmeirinha is a charming house centred on its private courtyards and gardens, with a nice swimming pool. Guests can make walks, horse riding, and the house is not far from the surfing area of the West Cost of the Algarve.

**Location**

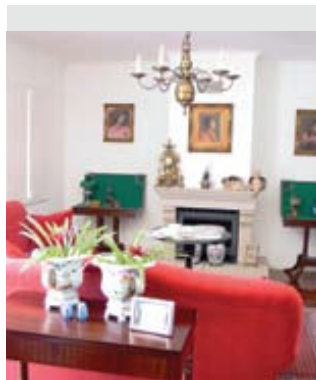
Mexilhoeira Grande, 8 km from Portimão.

**Approach**

From Lisbon Airport: Follow the motorway A2 in direction to Algarve. When you arrive to Algarve follow the "Via do Infante/ A22" until Portimão. From Portimão follow the N125 in direction of Lagos. After 8 km, in Mexilhoeira Grande, turn right towards the centre where you will find the house just before the church.

**Maria Armanda Guedes de Sousa**

Vila Chão do Marão · 4600-801 Amarante · Portugal



Nestled in the slopes of the Marão hillsides, whose fine, clean air is perfumed with heather and French lavender, Casa da Pedra is bursting with the charms of songbirds and sunsets, which invite a relaxing walk to see the country life to your satisfaction, on a well deserved rest, enjoying the views from your balcony. This is a perfect house to those who want to discover this typical region, full of stories and mystery, enjoying the simplicity of the countryside.

**Casa Rústica C**  
Open all year

**Facilities | Activities**  
Gardens; Swimming pool; Walking

**Accommodation**  
4 Bedrooms (1 Double and 3 Twins)  
2 Apartments for 4 people

**Email** [pedra@solaresdeportugal.pt](mailto:pedra@solaresdeportugal.pt)

**Location**  
Vila Chão do Marão, 5 km from Amarante.

**Approach**  
From Oporto Airport: take the motorway A4 in direction to Amarante. Leave the motorway in direction to "Amarante Este", and follow by the right. You will find the house after 5 km in the right side of the road.



**Maria Ana Rooke P. Dias de Magalhães de Abreu e Lima**

Arcozelo 4990-257 Ponte de Lima · Portugal



**Casa Rústica C**  
Open all year

**Facilities | Activities**  
Gardens; Swimming pool; Walking

**Accommodation**  
5 Bedrooms  
[2 Doubles, 2 Twins and 1 Single]  
1 Apartment for 2 people

**Email** [salgueirinho@solaresdeportugal.pt](mailto:salgueirinho@solaresdeportugal.pt)

This rustic cottage has a farming history stretching back to the 16th Century. Today Salgueirinho retains its farming culture, surrounded by vineyards, orchards, gardens and woodland, making it the ideal location for families. A breathtaking view of Ponte de Lima can be enjoyed from the wooden veranda.

**Location**  
Arcozelo, 2 km from Ponte de Lima

**Approach**  
From Porto Airport: Take the motorway A3 to Braga/Valença. At the km76 leave the motorway in the exit signposted Ponte da Barca/Ponte de Lima. After paying the toll, turn right to Ponte de Lima. 2 km after you will come to a roundabout, continue straight on and 1,5km after you will find another roundabout. Turn right to Viana do Castelo and 500m after you will come to third roundabout just before the bridge. Continue straight crossing the river Lima. Upon reaching the other side of the river, turn right, after the gas station, onto the north bank road to Arcos de Valdevez and Valença. Continue for another 200m and take the first turning on the left - a small lane signposted Casa do Outeiro. Go along the lane and you will come to a right hand turning in front of a church. Turn right here and following the signs for "Casa do Salgueirinho", 200m after you will find the entrance at your left hand.



**Maria Antónia Silva e Sousa**

S. Gonçalo, Arcozelo · 4990-150 Ponte de Lima · Portugal



Visitors will receive a warm welcome at Casa de S.Gonçalo, a 19th Century house on the banks of the River Lima, with views of the ancient town of Ponte de Lima and its beautiful medieval bridge. Here, you will discover a beautifully decorated interior including many pieces of hand painted regional pottery and a charming antique grandfather clock. S.Gonçalo has a secluded old fashioned garden and offers easy access to the excellent restaurants of Ponte de Lima.

**Location**

Arcozelo, 1 km from Ponte de Lima.

**Approach**

From Porto Airport: Take the motorway A3 to Braga/Valença. At the km76 leave the motorway in the exit signposted Ponte da Barca/Ponte de Lima. After paying the toll, turn right to Ponte de Lima. After 2 km you will come to a roundabout, continue straight on and 1,5km after you will find another roundabout. Turn right to Viana do Castelo and after 500m you will come to a third roundabout just before the bridge. Continue straight crossing the river Lima. On the other side of the river, turn right, after the gas station, onto the north bank road to Arcos de Valdevez and Valença and then turn immediate first right and continue along this lane for approx 400m. The house is to be found on the right hand side of the road.

**Casa Rústica C**

Open all year

**Facilities | Activities**

Gardens; River nearby; Walking

**Accommodation**

1 Double room  
1 Apartment for 2 persons

**Email**

saogoncalo@solaresdeportugal.pt



**Maria Margarida A. A. Brandão Capelo**

Lugar da Piedade · 4755-508 Sequiade · Portugal



**Casa Rústica C**

Open all year

**Facilities | Activities**

Bicycles; Meals available on request; Games room; Gardens; Swimming pool; Walking

**Accommodation**

3 Bedrooms (2 Doubles and 1 Twin)  
3 Apartments for 2 people

**Email** sequiade@solaresdeportugal.pt

Its construction has been traced to 1748. When the house came into new ownership, all the building was endowed with the best conditions with comfort and security. The stone walls were restored leaving the typical granite of the region visible, also allowing full isolation of the interiors. The involving exterior space is carefully landscaped, possessing places and beautiful secluded places. Casa de Sequiade is perfect for rest but there are various activities and its nearness from Barcelos allows guests to discover this traditional region.

**Location**

Sequiade, 8 km from Barcelos.

**Approach**

From Oporto Airport: Take the A3 motorway to Braga/Valença. After approx. 50 km exit the motorway in the junction signposted Braga Oeste / Barcelos, and follow the direction of "Martin". After paying the toll turn left to Braga and 900 m after turn to your right side to Passos S.Julião to a national road, 5,5km after you will find a gas station there you turn to the right side and after 400m you will find Casa de Sequiade at your left hand.



### Alcindo das Dores Pereira

Estorãos · 4990-590 Ponte de Lima · Portugal



An 18th Century granite construction, originally occupied by a clog maker ('Tamanqueiro'), Casa do Tamanqueiro later became part of a farm, lending a rustic quality to this charming cottage. Inside, you will find the traditional stone fireside and kitchen, so typical of the Minho region, decorated with local handicrafts and pottery.

#### Casa Rústica C

Open all year

#### Facilities | Activities

Fishing; River nearby; Walking

#### Accommodation

1 Apartment for 4 persons

#### Email

tamanqueiro@solaresdeportugal.pt

#### Location

Estorãos, 7 km from Ponte de Lima.

#### Approach

From Oporto Airport: Take the motorway A3 to Braga/Valença. At the km 77 leave the motorway in the exit signposted Arcos de Valdevez. After paying the toll, follow the A27 in direction to Viana do Castelo. Leave the A27 on the exit signposted "Estorãos / Lagoas". On the roundabout turn left following the signs to Estorãos. After 1 km you will arrive to a small roman bridge, cross the bridge and immediately turn right after the bridge. Casa do Tamanqueiro is to be found on the right hand side of this small lane in about 200m.

