

**João Pedro Malheiro Faria Barbosa**

Correthã · 4990-297 Ponte de Lima · Portugal



Quinta da Agra is a building with foundation before Sec. XVI. A gate in the stone wall gives access to the two houses which are restored with good taste and comfort.

The owner dedicated 10 years returning the architecture to its original state, recovering the roofs, the guillotine windows, the balconies in quarry, and leisure retreats.

On this Farm all of the restoration details were taken care, from the involving area of the house, to the century old olive trees, the picadors and the stables, to the small lakes for the fishing enthusiasts.

**Quinta e Herdade C**

Open all year

**Facilities | Activities**

Billiards; Chapel; Meals available on request; Fishing; Gardens; Swimming pool; Walking; Wine Tasting

**Accommodation**

6 Bedrooms  
(3 Double and 3 Twins)

**Email** [agra@solaresdeportugal.pt](mailto:agra@solaresdeportugal.pt)

**Location**

Correthã, 2 km from Ponte de Lima.

**Approach**

From Oporto Airport: Take the motorway A3 to Braga/Valença. After 76km leave the motorway at the exit marked Ponte de Lima (junction 11). Turn right for Ponte de Lima and go across two roundabouts. At the third, go across and follow the N306 to Freixo. After around 900m there is a sign for "Freixo 14km". At this point, fork right and continue for another 500m. The gate to Quinta da Agra is on the right.

**Albano Paganini da Costa Lobo**

Timpeira · 5000-419 Vila Real · Portugal

**Quinta e Herdade C**

Open all year

**Facilities | Activities**

Meals available on request; Gardens; River nearby; Swimming pool; Walking

**Accommodation**

4 Bedrooms (2 Doubles and 2 Twins)  
3 Apartments for 4 people

**Email**

[agricolalevada@solaresdeportugal.pt](mailto:agricolalevada@solaresdeportugal.pt)

**Location**

Timpeira, 1,5 km from Vila Real.

**Approach**

From Porto Airport: From airport take the A4 to Amarante / Vila Real. Once in Amarante continue in the IP4 to Vila Real. Exit the IP4 in the junction signposted Vila Real - Norte and continue following the directions of Vila Real - Centro. Then, in the BP petrol station, turn left in direction of Sabrosa. After turn left again following the signpost to Casa Agrícola da Levada and you will find the house. Please note that from the IP4 to the house it's about 1,5 km.

**Hubertus Lenders Biemond**

Sertã · 6100-459 Nespéral · Portugal



This lovely country house dates back to the 18th Century. It's situated in the centre of Portugal within the beautiful region of Sertã. It's a typical Portuguese Quinta with rural traditions, surrounded by vines, fruit trees and a wood. It's an ideal place for relaxation, breathing in the pure mountain air with walks along the rivers and nearby reservoirs. The building offers comfort and functionality, allowing to the guests a nice stay full of tranquillity.

**Quinta e Herdade C**

Open all year  
(except December and January)

**Facilities | Activities**

Gardens; Horse Ridding; Indoor swimming pool; Sauna; Walking; Wine Tasting

**Accommodation**

4 Double Bedrooms

**Email** bonjardim@solareshortportugal.pt

**Location**

Nespéral, 8 km from Sertã.

**Approach**

From Lisbon: Take the motorway A1 to North/Porto. Leave the A1 in "Pombal" and follow the IC8 road in direction to Castelo Branco, turning off for Sertã. In Sertã take the road N238 leading to Tomar. Before Cernache do Bonjardim, turn left signposted Nespéral - Turismo Rural, then follow the signs and you will find the house 1,5 km ahead.



**Maria Fernanda Sousa Carvalho Martins**

S. João da Ribeira · 4990-408 Ponte de Lima · Portugal



**Quinta e Herdade C**

Open from May to October

**Facilities | Activities**

Gardens; Jogging course; River nearby; Swimming pool; Walking

**Accommodation**

2 Apartments for 2 people  
2 Apartments for 4 people

**Email**

quintaaldeia@solareshortportugal.pt

Visitors in search of a restful, rural setting will not be disappointed at Quinta da Aldeia. Guests may unwind in this rustic cottage and in the seclusion of the surrounding farmland, situated next to a 17th Century mansion. The main building is a small manor house located at Lugar de Castro that offers calm and privacy. The apartments are decorated with rustic furniture, according to the healthy farm life. The house is 2km from Ponte de Lima, allowing nice visits to the village.

**Location**

Ribeira, 2 km from Ponte de Lima.

**Approach**

From Oporto Airport: Take the motorway A3 to Braga/Valença. At the km 76 leave the motorway in the exit signposted Ponte da Barca/Ponte de Lima. After paying the toll, turn right to Ponte de Lima. 1 km after take the road signposted "Aldeia" on the right. Follow this lane for 250m and you will find the house on the left hand side.



**Maria Francisca Pessanha Pinto Machado**

5340-031 Arcas · Macedo de Cavaleiros · Portugal



This estate, situated in Arcas near Macedo de Cavaleiros, is a magnificent example of a house built in the 17th and 18th Century. It belongs to the Pessanha family, descendants of a Portuguese teacher who specialised in navigation, during the period of King Dinis (1261-1325). Within the house, particularly the chapel, there is a traditional welcoming atmosphere. An interesting attraction for the guests here is the opportunity to do some traditional farming and the option to use the hunting area. Also one can try the delicious gastronomy of the Tras-os-Montes Region. Within the neighbouring area of Barragem do Azibo and the Montesinho Natural Park, there is a village called França which offers horse riding lessons.

**Location**

Arcas, 25 km from Macedo de Cavaleiros.

**Approach**

From Porto Airport: Take the A4 to Amarante. Then from Amarante take the IP 4 towards Bragança. Exit the IP4 in the second sign to Macedo de Cavaleiros. You will cross a bridge and then take the EN15 road (parallel to the IP4). After only 800m, turn left in the direction of Valheis. After 1500m, turn left again at the sign to Ferreira and Arcas. After 13 km, you will drive into Arcas, just after the road branches right to Torre de D. Chama.

**Quinta e Herdade B**

Open all year

**Facilities | Activities**

Bicycles; Chapel; Meals available on request; Fishing; Gardens; Hunting; Swimming pool; Walking; Wine Tasting

**Accommodation**

4 Apartments for 2 people  
2 Apartments for 4 people

**Email** [arcas@solaresdeportugal.pt](mailto:arcas@solaresdeportugal.pt)

**Luis Mendes Norton de Matos**

Queijada · 4990-685 Ponte de Lima · Portugal

**Quinta e Herdade B**

Open all year

**Facilities | Activities**

Chapel; Meals available on request; Gardens; Seminars; Swimming pool; Walking; Wine Tasting

**Accommodation**

3 Twin Bedrooms  
1 Apartments for 4 people  
1 Apartments for 6 people

**Email**

[baganheiro@solaresdeportugal.pt](mailto:baganheiro@solaresdeportugal.pt)



Quinta do Baganheiro, a 17th Century manor built by the Knights of Malta, bears witness to a somewhat tumultuous history, having been the victim of several attacks during the French invasions. Through many generations, Baganheiro has lost and regained land, but has always remained with the same family. This eminent manor house affords a stunning view over the Lima valley, and is surrounded by the succulent greenery of vineyards, orchards and chestnut trees. Na 6ª linha, a seguir a same family: "Baganheiro" was the name given at the end of the 18th Century, probably due to the fact that flax and wine were cultivated on the estate, "baganho" being the name of the plant in Portuguese.

**Location**

Queijada, 7 km from Ponte de Lima.

**Approach**

From Porto Airport: take the motorway A3 to Braga/Valença. Leave the motorway at km66 in direction to Vila Verde. After paying the toll turn left in the road to Ponte de Lima (N201) After 2 km, you will come to the village, Queijada. Drive through the village, and you will see a sign for Quinta do Baganheiro on the right side. Turn left here into the driveway.

**Maria Teresa G. G. N. Monteiro Santos**

Póvoa e Meadas · 7320-014 Castelo de Vide · Portugal



In the Castelo de Vide council, near Marvão and Portalegre, Quinta de Bela Vista is the guarantee of absolute restfulness and communion with nature, with magnificent views all round. Located in a farm estate, where you have the opportunity of watching the agricultural work, like fruit harvest, milking of cows, grape harvest and the wine making. Quinta da Bela Vista demonstrates the taste and wisdom of a good country house. This house is a symbol of the rural traditions of the Alentejo region.

**Location**

Póvoa e Meadas, 13 km from Castelo de Vide.

**Approach**

From Porto Airport: Take the A1 to Lisbon, get out of A1 at Torres Novas, take the N118 follow the directions to Abrantes continue on N118 to Alpalhão, then when you arrive to Alpalhão take the N246 to Castelo de Vide, here follow the directions to Póvoa e Meadas, follow the signpost Quinta da Bela Vista to find the house.

From Lisbon: Take A2 / Sul motorway and then A6 until Estremoz. From here follow the IP2 / N18 to Portalegre. Once arriving in Portalegre take the N246 road Castelo de Vide and from here follow the directions to Póvoa e Meadas where you will find the house.

**Quinta e Herdade B**

Open all year

**Facilities | Activities**

Bicycles; Meals available on request; Games room; Mini-Golf; Horses; Jogging course; Seminars; Swimming pool; Tennis; Walking

**Accommodation**

4 Bedrooms (2 Doubles and 2 Twins)  
1 Apartments for 2 people  
1 Apartments for 4 people  
1 Apartments for 6 people

**Email** belavista@solaresdeportugal.pt**Quinta e Herdade B**

Open from 15th July to 30th September

**Facilities | Activities**

Gardens; River nearby; Swimming pool; Walking

**Accommodation**

3 bedrooms  
(2 Doubles and 1 Twin)

**Email** calcada@solaresdeportugal.pt**Luís Manuel Magalhães Fernandes Pinto**

4960-614 Melgaço · Portugal



The exact date of construction of this rustic house is unknown, although by the architectural style and archaeological evidence, it is thought to be late 17th or early 18th Century. This farm setting in the most northerly village of Portugal is close to the mountainous region of the Peneda-Gerês National Park, rendering it a most picturesque location. Its location allows guests to know the rural traditions of the region. Quinta da Calçada is also next to the Minho river, where the "lampreia", a river fish, is much appreciated.

**Location**

Melgaço

**Approach**

From Oporto Airport: Take the motorway A3 to Braga/Valença. In Valença take the N101 to Monção/ Melgaço. The house is situated 100 m from Melgaço, in the road to S. Gregório.

**Alcino Cardoso**

Lugar do Casal · Facha · 4990-600 Ponte de Lima · Portugal



Situated in Facha, near Ponte de Lima, Quinta do Casal is a Manor House from the XVI century. It was provided with a simple and modern decoration. It has six new apartments. Outside there are a very beautiful wood near the orchard, a great swimming pool, and a tennis court. Quinta do Casal is a nice proposal to a calm and pleasant holiday where history and contemporaneous art are together. With thousands of trees, bushes and herbaceous, its gardens and running waters offers to the guests a tranquil encounter with nature.

**Location**

Facha, 6 km from Ponte de Lima.

**Approach**

From Porto: Follow the A3 in direction to Valença/Braga, and leave at km 76 in direction to Ponte de Lima. After paying the toll turn to the right to Ponte de Lima. Three km after, you will find a roundabout and you pass it right ahead. Two km after you have another roundabout and here you have to turn to the right. One km after there is a third roundabout, so you have to turn to the left to Barcelos, Darque for the EN203. Five km after, in Seara, you have to turn to the left, to a small road and follow the signal "Facha" and "Castro de Sto Estevão". 1,4km after you will find Quinta do Casal in your left side. It has a white wall and a chapel.

**Quinta e Herdade B**

Open all year

**Facilities | Activities**

Chapel; Fishing; Games room; Gardens; Gymnasium; Indoor swimming pool; Seminars; Swimming pool; Tennis; Walking

**Accommodation**

3 Twin Bedrooms  
6 Apartments for 2 people

**Email** [casal@solaresdeportugal.pt](mailto:casal@solaresdeportugal.pt)**Quinta e Herdade C**

Open all year

**Facilities | Activities**

Bar; Games room; Gardens; Swimming pool; Walking

**Accommodation**

4 Bedrooms  
(1 double and 3 twins)

**Email** [cimaeiriz@solaresdeportugal.pt](mailto:cimaeiriz@solaresdeportugal.pt)**João Gaspar de Sousa Gomes Alves**

4810-601 Calvos · Guimarães · Portugal



From this house, located in the hill of Penha, the visitor can enjoy the peaceful of the country in a health ambience ecological balanced together with a magnificent view make this place ideal for a relaxing holidays, far away from the big cities noises. The house was constructed in the 17th century and it represents the Minho architecture. Later, it was restored keeping its original design.

**Location**

Calvos, 10 km from Guimarães.

**Approach**

From Oporto Airport: Take the motorway A3 towards Braga/Valença turning off at km25 onto the A7 towards Guimarães. Once you arrive in Guimarães take the road to Felgueiras/Fafe (N101), after 4 Km turn right to the road signposted Felgueiras (N101). Go along this road for 4 Km and you will find on your right a sign indicating Penha-Lapinha. Follow this road for 2 Km and you will find a pillory with a cross, there turn left and you will find the house entrance gate on the left side.

**Maria Laura Q. A. F. Cardoso da Rocha**

3660-404 S. Pedro do Sul · Portugal



Dating back to the period before the foundation of Portugal (1143), Quinta da Comenda was owned by the Queen D. Teresa, mother of the first king of Portugal, D. Afonso Henriques. A farming and wine growing estate surrounds a house of exceptional architectural beauty. The wines produced here have been known since the days of the Order of Malta. So, the owners decided to develop a modern agricultural production: now the produce biological agriculture, pioneer in the region.

**Location**

2 km from S. Pedro do Sul.

**Approach**

From Oporto Airport: Take the A1 motorway to Lisbon, get out of A1 at Albergaria-a-Velha, follow the IP5/A25 till you see a signpost Vouzela, make a left turn and go to Vouzela when you arrive to Vouzela take the N16 to S. Pedro do Sul. Once in S. Pedro do Sul continue on N16 to Viseu the house is situated on the right side follow the sign post.

**Quinta e Herdade B**

Open all year

**Facilities | Activities**

Chapel; Meals available on request; Fishing; Games room; Gardens; Hunting; Seminars; Swimming pool; Walking; Wine Tasting

**Accommodation**

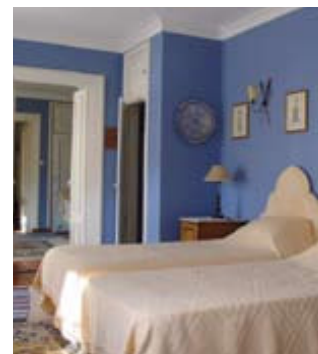
6 Bedrooms (1 Double and 4 Twins)  
1 Apartment for 2 people

**Email** comenda@solaresdeportugal.pt



**Piers Alexander Crighton Gallie**

Franqueira · 4750-301 Barcelos · Portugal



**Quinta e Herdade B**

Open from April to October

**Facilities | Activities**

Gardens; Library; Swimming pool; Walking; Wine Tasting

**Accommodation**

3 Bedrooms  
(1 twin and 2 doubles)

**Email** franqueira@solaresdeportugal.pt

Taste the 'Vinho Verde' of Convento da Franqueira, a 16th Century monastery built with the stones from the nearby ruins of Faria castle. The English owners have restored the 'Convento' with charm and imagination creating a comfortable family home. The lush greenery of Franqueira's gardens and vineyard, and the spring-fed swimming pool hidden behind a graceful 17th Century 'fonte' provide the visitor with a perfect setting to unwind.

Located at 6 km from the typical city of Barcelos, Quinta do Convento da Franqueira is a good starting point to discover some enchantments of this region.

**Location**

Franqueira, 6 km from Barcelos.

**Approach**

From Porto Airport: Take the Northern coastal road A28 to Viana do Castelo/Valenca. Turn right at Junction 18, Braga Barcelos. Take A11, m-way, to exit 3, Barcelos. Take left lane direction Viana do Castelo and follow N103 North to 2nd right, sign Pov. de Varzim. Go under bridge and take 2nd left to Carvalhal, Franqueira. Follow road through village, up hill, over m-way, through woods for 3,5km. Turn right before blue bar, pass church and turn left through blue gates.



**Ilídio José Vieira de Matos**

Cabeça Gorda · 7800-631 Beja · Portugal



Monte da Corte Ligeira is a typical house from Alentejo region that maintains the original architecture. The estate of 250 hectares blends its traditional decorations and the peace of the countryside to all the modern comforts of this restored house, inviting you to a pleasant stay.

Here, guests can hunt, fish and walk. They can also participate in the agricultural activities of the house. From Monte da Corte Ligeira guests can observe a magic sunset.

**Quinta e Herdade B**

Open all year

**Facilities | Activities**

Fishing; Games room; Hunting; Swimming pool; Walking

**Accommodation**

8 Bedrooms  
(1 Double and 7 Twins)

**Email** corteligeira@solaresdeportugal.pt

**Location**

Cabeça Gorda, 14 km from Beja.

**Approach**

From Lisbon Airport: Follow in the motorway A2 in direction to Sul/Algarve until the exit to IP8/Beja. Follow the IP8 until Beja, and there take the IP2 to Faro/Algarve. After 11 km leave in direction to Mertola/Vila Real de Sto António, and 300 m after turn left in direction to "Quintos". After 4 km you will see the white and yellow farm gates at your right.



**Mário Gaspar Leite de Barros Pinto**

Lugar de Cortinhas · Paçô · 4970-231 Arcos de Valdevez · Portugal



**Quinta e Herdade C**

Open all year

**Facilities | Activities**

Bar; Gardens; River nearby; Swimming pool; Tennis; Walking

**Accommodation**

8 Bedrooms  
(3 Doubles and 5 Twins)

**Email** cortinhas@solaresdeportugal.pt

Situated in the heart of the Alto Minho near the entrance to the Peneda Gerês National Park, in a region of contrasts and unusual beauty, this house dating from the beginning of the XX century and built in granite, is approached by a shady drive. Its interior is notable for the fine collection of neo-classical glazed tiles.

Francisco Teixeira de Queiroz, a writer from the 19th, ordered the construction of this house. Personalities from Portuguese culture and from the politics are attached to the history of this house. After a period of decline, Quinta de Cortinhas belongs now to Mário Caspar Leite de Barros Pinto and its wife Maria da Graça Teixeira de Queiroz, granddaughter of the writer who ordered to construct the house.

**Location**

Paçô, 1 km from Arcos de Valdevez.

**Approach**

From Porto: Follow the A3 in direction to Valença/Braga, and leave at km 77 in direction to Arcos de Valdevez. After paying the toll follow the IC28 to Arcos de Valdevez. Leave the IC28 on the exit to Arcos de Valdevez and 2 km after, you will find the gate of Quinta de Cortinhas in your right side, 50 m before a petrol station (GALP).



**António Júlio Agorreta d' Alpuim**

Av. Estrada Real · 4930-337 Vila Nova de Anha · Portugal



Paço d'Anha is a fine example of 16th Century Portuguese architecture. Many superb pieces of antique furniture and family heirlooms can be seen here. The name 'Paço' was given after the king D.António Prior de Crato hid here in 1580, when persecuted by Spanish soldiers. Absolute privacy and tranquility is afforded by these apartments, housed in the renovated buildings. One may visit the vineyards and cellars and sample the renowned Vinho Verde.

**Location**

Vila Nova de Anha, 3 km from Viana do Castelo.

**Approach**

From Oporto Airport: take the IC1/A28 to Viana do Castelo Approximately 15 kilometers before Viana do Castelo, turn right following the sign for Braga / Barcelos and Zona Industrial (note that you will pass a sign indicating this distance in kilometres). This will take you to a roundabout where you must turn right following the sign Viana do Castelo, following the N13 road. After passing the petrol station turn left following the blue sign "Turismo de Habitação". Continue along this road following the blue sign for Paço d' Anha and after 1.5 km, you will come to the center of the village of Anha, where, in a small square you will see a Post Office and two Cafés. Follow the blue sign marked "Turismo de Habitação" until you come to a high stone wall which is the perimeter wall of Paço d' Anha.

**Quinta e Herdade A**

Open all year

**Facilities | Activities**

Chapel; Gardens; Walking; Wine Tasting

**Accommodation**

4 Apartments for 2 people

**Email** pacoanha@solaresdeportugal.pt



**Maria Margarida Corrêa de Barros Baltar**

Quinta da Maragoça · 4575-572 Valpedre · Penafiel · Portugal



**Quinta e Herdade C**

Open all year

**Facilities | Activities**

Chapel; Meals available on request; Games room; Gardens; Gymnasium; Sauna; Seminars; Swimming pool; Tennis; Walking

**Accommodation**

3 Bedrooms (1 Double and 2 Twins)  
4 Apartments for 2 People  
1 Apartment for 6 People

**Email** maragoça@solaresdeportugal.pt

Situated close to the spa of S. Vicente, in the way of Penafiel to Entre-os-Rios, Quinta da Maragoça, is a house of the 18th century that offers an ample panoramic view of the landscape of Douro Litoral. It is a truly place of well-being and leisure, where beyond of foot tours or bicycle ridings, people can still usufruct of a spa, fitness and sauna spaces and a therapeutical massage room and treatments. Here we can find history and stories of different centuries, a truly travel through Baroque period.

The main house is now considered a national monument and classified by IPA (Institute of Architecture Patrimony).

**Location**

Valpedre, 8 km from Penafiel.

**Approach**

From Oporto Airport: follow the Motorway A4 in direction to Amarante/Vila Real. Leave on the exit to Penafiel Su/Entre-os-Rios and follow the indications to Entre-os-Rios driving on the road EN 106 until arrive to the village of "Pinheiro". There, turn right to "Escola C+S do Pinheiro". Go straight ahead following on the left side of the road. You will pass trough the Paroquial Church. Then you will arrive to a bifurcation. Turn to the right and 1 km ahead you will find Quinta da Maragoça on the left side of the road.



**Filinto Moura Morais**

Estrada de Valpaços-Apartado 194 · 5400-560 Chaves · Portugal



Quinta da Mata is a house from the XVII century - with a chapel, located at 3 km from the city of Chaves in the hillside of the "Serra do Brunheiro" surrounded by a thick forest and by copious sources of water. Quinta da Mata has a strong granite construction and here emerges the white chapel. The access to the house is made by a rock stairs that lead to a forecourt to welcome the guests.

The more adventurous guests that love nature can ride horses, bicycles and walk in maintenance circuits or clime the mountain.

**Location**  
3 km from Chaves.

**Approach**  
From Oporto Airport: Take the A4/IP4, in direction to Vila Real. In Vila Real take road EN 2 in direction to Chaves. Quinta da Mata is a 3 km from Chaves, on the road in direction to Valpaços (EN 213).

**Quinta e Herdade B**  
Open all year

**Facilities | Activities**  
Bicycles; Chapel; Meals available on request; Gardens; Library; Sauna; Seminars; Swimming pool; 2 Tennis; Walking; Wine Tasting

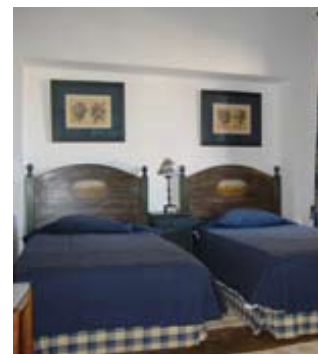
**Accommodation**  
6 Bedrooms  
(4 double and 2 twins)

**Email** mata@solaresdeportugal.pt



**Nuno Eugénio de Almeida**

Sto Aleixo da Restauração · 7875 Moura · Portugal



**Quinta e Herdade B**  
Open all year

**Facilities | Activities**  
Bar; Billiards; Chapel; Meals available on request; Fishing; Horse Ridding; Hunting; Walking

**Accommodation**  
5 Twin rooms

**Email** negrita@solaresdeportugal.pt

In the border with Spain, a few kilometres from Moura, in Santo Aleixo da Restauração, it is placed Herdade da Negrita. With an area of 3500 ha, and being one of the oldest properties of the Baixo Alentejo, Herdade da Negrita keeps unbroken its natural beauty.

Its five rooms, all with bathroom, guarantee a calm sleep and a wake up full of energy. The farm allows discovering the habitat of the bovines, the true alentejano pig and all the fauna that coexists in this region. Here it is possible to make part of the house work, such as the animal creation and the olive and cereals harvest.

**Location**  
Santo Aleixo da Restauração, 15 km from Moura.

**Approach**  
From Lisbon: Follow in the A2 until the exit to IP8 to Beja. In Beja, follow in the EN260 in direction to Spain for 58 km until Vila Verde de Ficalho. There, turn to "Safara / Sobral da Adiça", road EM385. 10 km after Sobral da Adiça, turn right to "Sto Aleixo da Restauração", and 5 km after you will find, on your right side the sign "Monte da Negrita". So, turn there and 5 km after you will find the House.



**Heitor Manuel Alves**

Paço · Ferreira · 4940-262 Paredes de Coura · Portugal



Located in a 5 hectare farm, a 16th century manor house, which name is derived from the distinguished families linked to the clergy, that have lived there for 5 centuries. In the thick wood of the mature forest near the farm, there is a chapel where the owners maintain the traditional celebration of festivities.

The house is surrounded by trees and countryside. Despite its noble characteristics, the house has a rustic environment because there are plenty of agricultural activities. In the outside there are the balconies, the animals, the wine cellar and a beautiful "espigueiro".

**Location**

Ferreira, 5 km from Paredes de Coura

**Approach**

From Porto Airport: Take the motorway A3 to Braga/Valença. Leave the motorway in the exit signpost Paredes de Coura. After paying the toll, turn left and follow the direction of Paredes de Coura and continue along this road for 8km and then you will come to Ferreira. At Ferreira you will see a sign for Casa de Paço, turn left following the sign and after 1km you will come to the house.

**Quinta e Herdade B**

Open all year

**Facilities | Activities**

Chapel; Meals available on request; Horses; Swimming pool; Walking

**Accommodation**

8 Bedrooms (5 doubles and 3 twins)  
2 Apartments for 4 persons

**Email** casapaco@solaresdeportugal.pt



**Oscar Oruesagasti Soraluce**

Parada · 4970-261 Arcos de Valdevez · Portugal



**Quinta e Herdade B**

Open all year

**Facilities | Activities**

Gardens; Seminars; Swimming pool; Walking

**Accommodation**

6 doubles Bedrooms

**Email** paradavez@solaresdeportugal.pt

The story of this house is wrapped in mystery and the story of the family which began its construction is unknown. The first registration of the house goes back to 1931, although its construction may have started earlier. Its reconstruction took place with the present owner, in 1996. Surrounded by a magnificent landscape with a beautiful view to the National Parque Peneda Gerês, with a serene and welcoming atmosphere, you can enjoy unforgettable moments where this peaceful atmosphere will provide you a tranquil stay at any time of the year.

The region has rich gastronomy, unforgettable landscape and ancestral culture, which still lives in many traditions, festivals, fairs and pilgrimages.

**Location**

Parada, 2 km from Arcos de Valdevez.

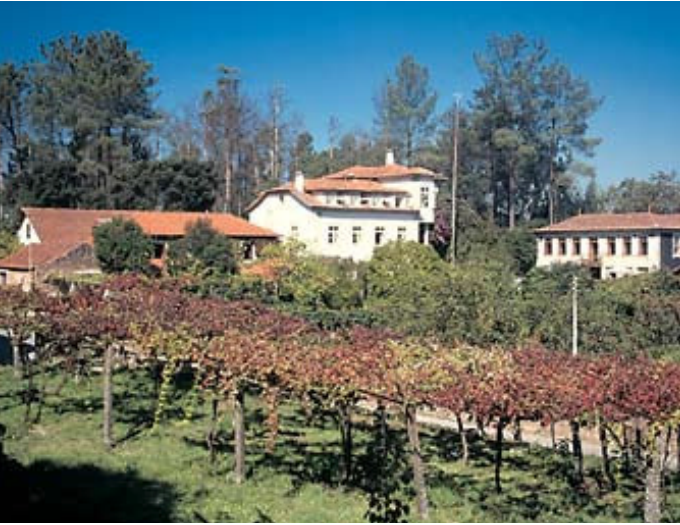
**Approach**

From Oporto Airport: take the motorway A3 in direction to Braga/Valença and leave at km77 to Arcos de Valdevez. Follow the IC28 in direction to Arcos de Valdevez. When reaching Arcos de Valdevez, catch the road to Monção; 1 km after leaving Arcos de Valdevez, turn left at the intersection, after finding a shrine, go straight on and, at the next intersection, turn right. 100m ahead there is a great gate, which marks the entrance of the House.



**Maria José Nogueira de Sousa Lopes**

Picaria · 4825-227 Guimarei · Santo Tirso · Portugal



An authentic example of farming life in the 18th Century, built predominantly of granite with wooden beams in the interior, Quinta da Picaria nestles in the rural region of Guimarei, a sleepy village near Santo Tirso, the perfect setting for walking enthusiasts.

The beauty of the vineyards and the orchards and the water tank form the perfect alive picture of the agricultural environment. Quinta da Picaria is located in a privileged natural place, being a perfect example of a farming house from the 16th century. In the summer, nothing is better than taste the produced wine Vinho Verde.

**Location**

Guimarei, 5 km from Santo Tirso.

**Approach**

From Porto Airport: Take the A3 for Braga. After about 20km take the road to Santo Tirso. In Santo Tirso take the old road N105 ("estrada velha") to Porto. After about 2 Km turn right to a small village called Guimarei. Follow the road for about 1 km, then turn left. After a further 750m, turn right and the house is on your right.

**Quinta e Herdade C**

Open all year

**Facilities | Activities**

Bicycles; Meals available on request; Walking; Wine Tasting

**Accommodation**4 Bedrooms  
(2 doubles and 2 twins)**Email** picaria@solaresdeportugal.pt**Quinta e Herdade A**

Open all year

**Facilities | Activities**

Billiards; Chapel; Fishing; Gardens; River nearby; Seminars; Swimming pool; Walking

**Accommodation**2 Twin Bedrooms  
5 Apartments for 2 people**Email** ponte@solaresdeportugal.pt**Maria Joaquina de Portugal L. T. Aragão de Sousa Alvim**

Faia · 6300-095 Guarda · Portugal



Situated in the Natural Park of the Serra da Estrela, this Quinta is reached by a Roman bridge over the river Mondego. This 18th century manor house has a box garden laid out in 1740 according to the design of a French architect. This house has excellent qualities for mountain tourism or for tranquillity and quietness at the gardens by the river shore. Quinta da Ponte is located near by some historic villages becoming like this a center of interest for those who want to make the Castles course as Sortelha, Trancoso, Almeida and Marialva and others.

**Location**

Faia, 13 km from Guarda.

**Approach**

From Oporto Airport: Take the motorway A1 to Lisboa, and turn into A25/IP5 to Viseu and Vilar Formoso. Follow the A25/IP5 in direction Guarda/Vilar Formoso. After passing the exits to Celorico and Trancoso, turn right in the exit number 26, that indicates "Trânsito Local" and Porto da Carne. 100m after leaving the motorway turn right. A few kilometers after turn right following the signs "Aldeia Viçosa", "Faia", "Quinta da Ponte" and a blue sign "Turismo de Habitação". Follow that narrow road for about 2,5 km and will come to a fork in the road. Continue straight on and you will find the house 300m after on the right side.

**João Machado Cruz**

Prova 4980-550 · Ponte da Barca · Portugal



The spacious, modern apartments at Quinta da Prova provide an excellent base for fishing, hunting, swimming and rambling. Unwind at this peaceful river-side setting with its surrounding woodland and enjoy the superb food at nearby restaurants. This Quinta it meets nature in its pure state, because of its agricultural characteristics, such as sheep, chicken and cattle creation or, simply, due to its proximity of the charming Lima river.

**Quinta e Herdade C**

Open all year

**Facilities | Activities**

Fishing; Jogging course; River nearby; Walking

**Accommodation**

2 apartments for 2 persons  
3 apartments for 4 persons

**Email** [prova@solaresdeportugal.pt](mailto:prova@solaresdeportugal.pt)

**Location**

Prova, 500 m from Ponte da Barca.

**Approach**

From Oporto Airport: Take the motorway A3 to Braga/Valença. At the km 77 leave the motorway in the exit signposted Arcos de Valdevez. After paying the toll, follow the road IC28 in direction to Arcos de Valdevez/Ponte da Barca. You will arrive to Ponte da Barca, here you go to the center and cross the old bridge over the river Lima, and immediately after the bridge you will see this big house on the right where you must go.



**Maria Fernanda São José Bibiano Martins Ferreira**

Estorãos · 4990-590 Ponte de Lima · Portugal



**Quinta e Herdade C**

Open all year

**Facilities | Activities**

Bicycles; Fishing; Games room; River nearby; Swimming pool; Walking

**Accommodation**

3 Apartments for 4 people

**Email** [rei@solaresdeportugal.pt](mailto:rei@solaresdeportugal.pt)

Quinta do Rei combines its distinct rustic ambience with an air of elegance. Set in the picturesque environs of Estorãos, this is the perfect spot to unwind and ramble through the surrounding countryside. This house has the rustic architecture from the ends of the 19th century and integrates a farm with its agricultural activities that guests can also participate.

**Location**

Estorãos, 7 km from Ponte de Lima.

**Approach**

From Oporto Airport: Take the motorway A3 to Braga/Valença. At the km 77 leave the motorway in the exit signposted Arcos de Valdevez. After paying the toll, follow the A27 in direction to Viana do Castelo. Leave the A27 on the exit signposted "Estorãos / Lagoas". On the roundabout turn left following the signs to Estorãos. After 1 km you will arrive to a small roman bridge. Just before the bridge turn left. You will find Quinta do Rei, 100 m ahead on the left.

