

**Maria Teresa Matos Marta da Cruz**

Travanca · 4690-831 Cinfães · Portugal



Located in the charming Douro valley, Solar de Miragaia is surrounded by most attractive scenery. This is an elegant 17th Century manor house dating from about 1645. The beautifully gated entrance bears the family coat of arms, welcoming the visitor to what will certainly be a delightful stay. In the Chapel of the house, with a magnificent barroc decoration, was found a manuscript dated 1762 in the sacred stone of the altar.

**Location**

Travanca, 7 km from Castelo de Paiva.

**Approach**

From Porto Airport: Take the motorway, A4 to Vila Real/Amarante. Leave the A4 at Penafiel (junction 13) and take the road N106 to Entre-os-Rios. Once in Entre-os-Rios cross the river and continue to Castelo de Paiva. Just before you arrive in Castelo de Paiva turn left following the road to Nespereira / Alvarenga and 1 km after turn right following the same direction and after 7 km you come to Travanca. In Travanca take the second road to the left, following the sign Turismo de Habitação. After 500m turn right into a narrow lane, following the sign "Solar de Miragaia". Then on your right you will see a stone cistern, after this the house is on the right. Although the house is in the county of Cinfães, it's nearer Castelo de Paiva (7km).



**Casa Antiga B**

Open all year

**Facilities | Activities**

Chapel; Meals available on request; Gardens; River nearby; Swimming pool; Walking

**Accommodation**

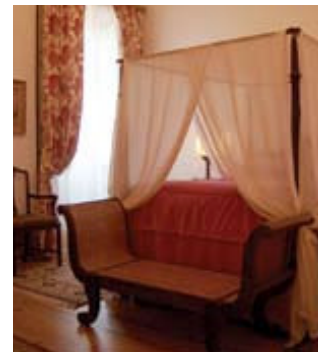
4 Bedrooms (3 Doubles and 1 Twin)  
1 Apartment for 4 people

**Email** miragaia@solareshortportugal.pt



**Carlos Manuel Sampaio Faustino Campolargo**

Rua de Nossa Sra Auxiliadora · 3780-453 Mogofores · Portugal



**Casa Antiga B**

Open all year

**Facilities | Activities**

Bicycles; Meals available on request; Games room; Gardens; Gymnasium; Indoor swimming pool; Library; Turkish Bath; Walking; Wine Tasting

**Accommodation**

3 Double Bedrooms  
3 Apartments for 2 people

**Email** mogofores@solareshortportugal.pt



Casa de Mogofores, is a manor house from the XIX Century, is related to the Agricultural development of the Bairrada region and with the creation of the Thermal spa of Cúria. The owners produce the Campolargo Wines and they had carefully restored and decorated the house, to welcome the guests. Casa de Mogofores provides arestful staying and a contact with Portuguese history, in particular the period of transition from monarchy to the republic. This house plenty of charm is an ideal place to discovery the Region, and visit the Curia Spas, to taste the gastronomy and wines, to play golf, to relax and profit their landscapes.

**Location**

Mogofores, 2 km from Anadia.

**Approach**

From Oporto Airport: Take the motorway, A1 towards "Lisboa". Turn off on the exit signposted "Mealhada". In Mealhada take N1 to north in direction to Curia/Porto. After 2 km you will pass the T-junction to Curia. Here you must continue in the same road (N1) and after 3km, on the roundabout, turn left following the signpost "Mogofores" and you will immediately cross the bridge over the railway. After 500m on the roundabout, turn to the right in direction to "Mogofores". Go straight ahead for 1,5 km towards to Mogofores Town, the house is on the center (near the Rail station, on the left side of the street – you can see a big pine tree in front of the house).

**José Manuel de Araújo Baptista Mendonça**

Sendim de Cima · 4935-564 Castelo do Neiva · Portugal



This manor house was built in the 16th and 17th centuries by the Cunha Lobo Barbosa and Sottomayor family just 1 km from the sea. In 1820, the Genoese Judge Luigi Vital Monteverdi married the owner of the estate and the house became to be known as Quinta do Monteverde. The manor house was completely renovated but the interior retains the touch of the seventeen hundreds. Quinta de Monteverde is a walled estate between the hills and the sea and close to the river mouth. Its privileged localization provides a gorgeous and an unforgettable stay to those o love nature. In Castelo do Neiva, the sandy beach rolls on and on; sand dunes and unspoilt stretches lend a wonderful sense of isolation to the surroundings.

**Location**

Castelo do Neiva, 9 km from Viana do Castelo.

**Approach**

From Oporto Airport: take the motorway A28/IC1 in direction to Viana do Castelo and leave on EN13 in direction to Castelo do Neiva. Reaching Castelo do Neiva turn left in direction to the beach, 200 m after you will find at your right side the Chapel Sra. das Neves. Close to the chapel you will find the gates to Quinta do Monteverde.

**Casa Antiga A**

Open all year

**Facilities | Activities**

Bicycles; Meals available on request; Games room; Tennis; Gardens; Library; Seminars; Swimming pool; Walking; Wine Tasting

**Accommodation**

7 Bedrooms  
(5 Doubles and 2 Twins)

**Email** [monteverde@solaresdeportugal.pt](mailto:monteverde@solaresdeportugal.pt)



**Fernando Amaral Campos Sarmiento**

Quinta de S. José · 2510-135 Óbidos · Portugal



**Casa Antiga B**

Open all year

**Facilities | Activities**

Games room; Gardens; Swimming pool; Tennis; Walking

**Accommodation**

6 Bedrooms (3 Doubles and 3 Twins)  
1 Apartment for 2 people  
1 Apartment for 6 people

**Email** [obidos@solaresdeportugal.pt](mailto:obidos@solaresdeportugal.pt)

Dating back to the 19th century, Casa d' Óbidos was built by the Mr. Garrelon, an engineer from the Eiffel team, who established himself there to lead the railway construction. It's located in an environmentally protected area, which allows the guest to enjoy a quiet environment and magnificent views of the castle of Óbidos.

Casa d'Óbidos has the characteristics of the great farming houses of the region. The property is situated in a region of great beauty, near from the beaches of Peniche, Baleal and Foz do Arelho. The proximity of Óbidos also allows discovering this gorgeous village.

**Location**

Óbidos

**Approach**

From Lisbon airport: Take the A8 motorway to Torres Vedras and Caldas da Rainha. Exit the motorway in the junction signposted Óbidos. Arriving in Óbidos you will find a roundabout where you must follow the directions to Caldas da Rainha [EN 8]. Approx. 500 m after you will pass a church on your left (Igreja do Senhor da Pedra). Immediately after turn left following the signpost of Casa d' Óbidos, continue straight and after 700 m you will find the gates of the house.



**João Gomes de Abreu de Lima**

Arcozelo · 4990-246 Ponte de Lima · Portugal



The peaceful ambience of this 16th Century house was disrupted in 1809, when it was invaded by French soldiers and used as their headquarters. It has since regained its composure, surrounded by a leafy garden and woods. Its vast 16th Century fireplace in the kitchens with its majestic stone pillars, is a beautiful souvenir from years ago. Alongside Outeiro is an enchanting stone aqueduct covered in ivy, which can be viewed from the veranda.

**Casa Antiga B**

Open all year

**Facilities | Activities**

Chapel; Meals available on request; Gardens; Library; Swimming pool; Walking; Wine Tasting

**Accommodation**

3 Twin Bedrooms

**Email** [outeiro@solaresdeportugal.pt](mailto:outeiro@solaresdeportugal.pt)**Location**

Arcozelo, 2 km from Ponte de Lima.

**Approach**

From Porto Airport: Take the motorway A28/IC1 in direction to Viana do Castelo. Then Following motorway A27 direction to Ponte de Lima. Leave at Arcozelo/Ponte de Lima (after a big tunnel). On the roundabout turn left in direction to Ponte de Lima, and continue straight for 1,5 km. After the traffic lights, turn right just before a brown tiled building. Go along a narrow lane for about 400 m. and turn sharp right immediately after the church on the right. About 50 m. along this cobbled lane take the left fork and continue, including up a small hill bearing left to the end. This is about 500 m. in total. At the end of the lane you will see a white wall with a gap in the middle which is the entrance to Casa do Outeiro.

**Maria Filomena Alvim Torres**

Avenida da Liberdade · 4820-118 Medelo · Fafe · Portugal

**Casa Antiga B**

Open all year

**Facilities | Activities**

Games room; Gardens; Swimming pool; Table tennis; Walking

**Accommodation**

8 Bedrooms ( 4 double and 4 twins) and 2 Apartments for 2 persons

**Email** [paredes@solaresdeportugal.pt](mailto:paredes@solaresdeportugal.pt)

This manor house originally dates from the mid 17th century and has subsequently been restored. Its big granite walls, a very used material on the region, mark the landscape. The house is surrounded by a romantic garden with ornamental ponds. Also there's a small lake with running water and ancient camelias. It is located on the outskirts of the town of Fafe, where urban life blends harmoniously into the picturesque rural scenery of the Minho. Nearby are the ancient towns of Braga and Guimarães. Furthermore there is easy access to the beautiful National Park of Peneda-Gerês, famous for its mounts, dams and reservoir - an ideal place for water sports.

**Location**

Medelo, 2 km from Fafe.

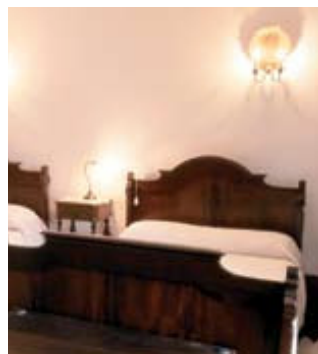
**Approach**

From Porto Airport: Take the A3 Road for Braga, turning off for the A7 to Guimarães. In Guimarães take the road to Fafe (N206) and a few kilometres after Guimarães you will enter a new road (IC5 / N206). Continue in this road until the junction signposted Póvoa de Lanhoso. 400 m after the exit turn right towards Medelo. After 1 km in the STOP sign turn right and 100 m after you will find the house on your right hand side.



**Visconde Viamonte da Silveira**

Av. de Londres · Creixomil · 4810-100 Guimarães · Portugal



This 18th Century manor house has been in the Sousa e Silveira family for 233 years. It is in the urban part of Guimarães but enjoys privacy, being protected by a lovely well maintained garden. Situated on the entrance of the city, Casa dos Pombais is a typical solar minhoto, surrounded by vineyards and a beautiful garden with orange trees, seedbeds and a fountain, where innumerable birds fly freely. With a beautiful the decoration, the house shows well conserved old furniture and valuable objects, including silvers, crystals and ceramics.

**Casa Antiga B**

Open all year

**Facilities | Activities**

Gardens; Seminars; Walking

**Accommodation**

2 Twin bedrooms

**Email** [pombais@solareshdeportugal.pt](mailto:pombais@solareshdeportugal.pt)**Location**

Guimarães

**Approach**

From Porto Airport: Take the A3 road for Braga turning off for the A7 at the km25 to the Guimarães. When you arrive in Guimarães, follow Av. Conde Margarido, just before entering the N206 turn right to Av. de Londres the house is situated on the left side, near the Hospital.

**João Pedro Gonçalves Gomes**

Largo Marquês de Soydos · 2890-132 Alcochete · Portugal

**Casa Antiga B**

Open all year

**Facilities | Activities**

Bicycles; Fishing; Games room; Gardens; Horse Ridding; Seminars; Swimming pool; Tennis; Walking

**Accommodation**5 Bedrooms  
(2 Doubles, 2 Twins and 1 Single)  
4 Apartments for 2 people**Email** [praiafontes@solareshdeportugal.pt](mailto:praiafontes@solareshdeportugal.pt)

Located in the centre of the picturesque town of Alcochete, with the river Tejo as landscape, Quinta da Praia das Fontes was the former residence of the Marquee de Soydos, built in the 16th century and later enriched with magnificent Portuguese tiles from the 17th and 18th Century. Its a prominent place where you can enjoy all the commodity in a historical ambience. You can also enjoy the traditional feasts of Alcochete. On this region the bull, the horse and the "campino" are very famous. The river Tejo also allows a nice fishing journey.

**Location**

Alcochete

**Approach**

From Lisbon: Follow the directions of A12 Sul/Ponte Vasco da Gama. You will cross the bridge "Vasco da Gama". Exit the motorway on the exit to Alcochete and follow the directions to Alcochete, where you will find the house located near the river, in front of the garden with statue of D. Manuel I.



**Luís Manuel Fernandes de Almeida Ferraz de Menezes**

S. Cristovão de Selho · 4810-316 Guimarães · Portugal



The house as it stands today was constructed in the 17th Century by the ancestors of today's residents. The interior is brimming with antique furniture and curios - even its ceilings are a delight to behold, some of them beautifully painted. The floors are not to be missed either, with their 'Arraiolos' rugs; Arraiolos being a town in the alentejo renowned for its elegant hand-woven rugs, with origins in the 18th Century. The house is surrounded by quiet forests where guests can enjoy walking, finding here and there natural fountains.

**Casa Antiga B**  
Open from March to November

**Facilities | Activities**  
Chapel; Fishing; Gardens; Library; Walking

**Accommodation**  
4 Bedrooms  
(3 Doubles and 1 Single)

**Email** ribeiro@solaresdeportugal.pt

**Location**  
São Cristóvão de Selho, 7 km from Guimarães.

**Approach**  
From Porto Airport: Take the motorway, A3 for Braga, turning off at the km25 for Guimarães. When you arrive in Guimarães take the EN 105 to Santo Tirso. After 5km, when you arrive at Pevidém take the right hand turn to S. Cristovão do Selho. Continue towards S. Cristovão crossing over the bridge. You will come to fork in the road. Take the right hand turn which leads to S. Cristovão do Selho. You will find the house on the left hand side in the village.



**Maria de Lourdes Pereira Lupi D' Orey**

Rio Frio · 2955-014 Pinhal Novo · Portugal



**Casa Antiga A**  
Open all year

**Facilities | Activities**  
Meals available on request; Gardens; Horse Ridding; Seminars; Swimming pool; Walking

**Accommodation**  
4 Bedrooms  
(3 Doubles and 1 Twin)

**Email** riofrio@solaresdeportugal.pt

Palácio de Rio Frio was built at the beginning of this century. At the time it was one of the biggest estates in the country mainly producing wine. The house is decorated with fabulous tiles. They illustrate the rural communities at work, in particular the wine making. In the main lounge the wall are completely covered with colourful tiles typical of the Ribatejo Region. The house is surrounded by a beautiful garden and its standing in the middle of a small wood creating a peaceful atmosphere. Between Montijo and Alcochete, not very far of the Tejo riversides, a magnificent silence involves the golden landscape of Palácio de Rio Frio and provides an hospitable stay.

**Location**  
Rio Frio, 10 km from Montijo.

**Approach**  
From Lisbon: Find the signs to the bridge Vasco da Gama (Sul). After crossing the bridge continue in the A12 motorway. Approx. 6 km after exit the motorway in the junction signposted Pinhal Novo. After paying the toll, turn left following the N252 road to Pinhal Novo (2 km). In Pinhal Novo follow the signs to Rio Frio (6 km) where you will find the house.



**Maria Luisa Távora**

Rodas · 4950-529 Monção · Portugal



Situated in the 'Alvarinho' wine-producing region, this noble manor has been owned by the Pita Palhares Antas Marinho family since 1500. It boasts a beautiful drive leading to the grand entrance, guarded by two splendid Magnolias. This imposing building with its beautifully furnished interior is a delight to behold, and its surrounding woodland offers a charming backdrop for afternoon strolls.

At Casa de Rodas, guests can discover the history of the house and taste the magnificent produced wine Vinho Verde. The house is located 1Km far from Monção, allowing a nice visit to the village.

**Casa Antiga B**  
Open all year

**Facilities | Activities**  
Chapel; Games room; Gardens; Swimming pool; Walking; Wine Tasting

**Accommodation**  
9 Bedrooms (5 double, 4 twins)  
1 Apartment for 2 persons

**Email** [rodas@solaresdeportugal.pt](mailto:rodas@solaresdeportugal.pt)

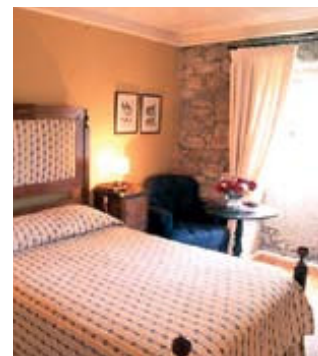
**Location**  
Rodas, 1 km from Monção.

**Approach**  
From Porto Airport: Take A3 motorway to Braga/Valença and leave the motorway in the junction sign posted Valença. From Valença take the N 101 to Monção. Arriving in Monção, in the roundabout, continue straight in direction to Melgaço and 500 m after turn right and 100 after you will find the entrance to the house on the right side.



**António Carlos Sobral Pinto Ribeiro**

5100-360 Britiande · Lamego · Portugal



**Casa Antiga A**  
Open all year

**Facilities | Activities**  
Bicycles; Chapel; Meals available on request; Gardens; Swimming pool; Walking; Wine Tasting

**Accommodation**  
6 Bedrooms  
(5 Doubles and 1 Twins)

**Email** [britiande@solaresdeportugal.pt](mailto:britiande@solaresdeportugal.pt)

Casa de Santo António de Britiande is situated on the outskirts of the famous Douro Valley in Britiande itself, a village frequently featured in medieval documents. It is believed that the front of the house was built in the 16th century. The house has a 17th century chapel containing panels of "azulejos" (tiles), an altar and a ceiling in gilt carved wood. Many years ago the manor house was a place of rest for the monks of Ferreirim Convent (1,5km).

**Location**  
Britiande, 5 km from Lamego.

**Approach**  
From Porto Airport: Take the A4/IP4 to Vila Real. In Vila Real follow the motorway A24 in direction to Lamego/Viseu. Exit the motorway in the exit of Lamego, and on the roundabout follow the directions of Moimenta da Beira (Road N206). 3 km after you will arrive to the village of Britiande, you will see a signpost saying 'Britiande'. 400m after this, turn left, there is the sign of the house(Casa de Sto Antonio -Turismo de Habitação). After 50 m find the house at your right hand side.



Júlio de Sousa Vieira de Matos

Rua Poça das Feiticeiras, 38 · 3500-639 Viseu · Portugal



The Quinta de S. Caetano, situated near the historical centre of Viseu, is a 17th century manor house, a graceful architectural structure. This beautiful manor house is part of the history of Viseu, having been residence of illustrious families of the city, such as the Viscountess of São Caetano. The house is surrounded by mystery and it has a chapel with an inscription dated 1680. In the garden, we find trees with hundred years, fountains; lakes and greenhouses. Here, guests can enjoy the excellent views of the Serra da Estrela, the highest mountain in Portugal.

**Casa Antiga B**  
Open all year

**Facilities | Activities**  
Meals available on request; Swimming-pool; Gardens.

**Accommodation**  
Billiards; Meals available on request; Gardens; Swimming pool; Walking

**Email**  
saocaetano@solareshdeportugal.pt

**Location**  
Viseu

**Approach**  
From Oporto Airport: Take the A1 to Lisbon, get out of A1 at Albergaria-a-Velha, follow the IP5/A25 to Viseu. At the town center of Viseu follow the street of Circunvalação, make a right turn to Mangualde, make a left turn to street Rua Poça das Feiticeiras, the house is situated on this street left side please follow the sign post.



Dom João Almeida de Santiago Sottomayor

4810-892 Taboadelo · Guimarães · Portugal



**Casa Antiga A**  
Open all year

**Facilities | Activities**  
Chapel; Meals available on request; Gardens; Jogging course; Library; Seminars; Walking; Wine Tasting

**Accommodation**  
7 Bedrooms (4 double and 3 twins)

**Email**  
saocipriano@solareshdeportugal.pt



A welcome sight indeed this 15th Century house must have been to the weary pilgrims lodging here on the way to Santiago de Compostela. Maintaining this age-old custom of receiving guests, the Sottomayor family today invite the modern day traveller. The spirit of Medieval Portugal is evident in the delightful tower room, with its splendid four poster bed. Paço de S.Cipriano is set amid the most enchanting gardens, orchards and vineyards, inviting you to stroll amongst its scented lush greenery.

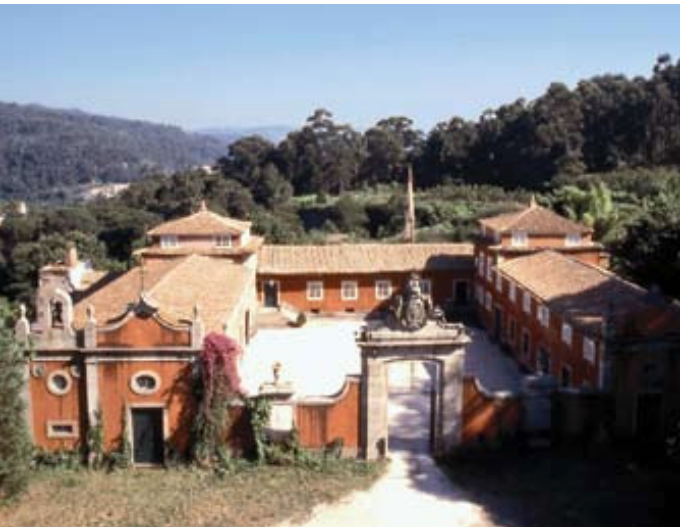
**Location**  
Taboadelo, 5 km from Guimarães.

**Approach**  
From Porto Airport: Take the motorway, A3 for Braga, turning off at the km25 to the A7 for Guimarães. Leave the motorway on the exit of Guimarães, at the entrance of the city follow the directions of "Santo Tirso" for the road EN105, 350 m after turn left on the sign "Estação" and after 300 m, on the roundabout turn right (for the road close the big wall). After 2 km on the roundabout go straight following the sign of "Paço de S. Cipriano". 3 km after you arrive to "Taboadelo" and you will find the entrance of the house at your right, in front of the church.



**Embaixador António Pinto de Mesquita**

Santo Amaro · 4800-913 Guimarães · Portugal



Casa de Sezim sits in the heart of the Minho, the Garden of Portugal, near Guimarães, Portugal's first capital. This beauty house has harmonious lines and an impressive facade that have become a motive of international curiosity in recent years. Casa de Sezim's interior has captured a style of simple elegance with its exquisitely decorated bedrooms, some furnished with four poster beds. Within its impressive sitting rooms hang early 19th century panoramic wallpapers depicting scenes from both the old and new world of America. Wine production at Sezim dates back to at least 1930, with the old wine-making equipment still to be seen on the grounds. Nowadays, the Vinho Verde produced here is of prize winning category.

**Location**

Santo Amaro, 5 km from Guimarães.

**Approach**

From Porto Airport: Take the Auto Estrada (motorway), A3 towards Braga turning off at the km25 to the A7 towards Guimarães. Once you arrive in Guimarães take the N105 to Santo Tirso. Go along this road and after 2 km you will find the sign of Covas. 200m after turn right following the sign of Santo Amaro and Casa de Sezim. Continue for about 2 km and you will find a fork in the road, here take the left and 1 km after you will find the entrance to Casa de Sezim also on the left.



**Casa Antiga A**

Open all year

**Facilities | Activities**

Bar; Chapel; Meals available on request; Games room; Gardens; Seminars; Swimming pool; Tennis; Walking; Wine Tasting

**Accommodation**

9 Bedrooms ( 4 double and 5 twins).

**Email** sezim@solaresdeportugal.pt



**João Cavaleiro Ferreira**

Lg Combatentes da Grande Guerra, 12 · 7150-152 Borba · Portugal



**Casa Antiga A**

Open all year

**Facilities | Activities**

Bicycles; Meals available on request; Gardens; Swimming pool; Walking; Wine Tasting

**Accommodation**

6 Bedrooms (3 Doubles and 3 Twins)  
2 Apartments for 2 people

**Email** terreiro@solaresdeportugal.pt



Casa do Terreiro do Poço an 18th century manor house, is located in the historical centre of Borba, next to the Largo dos Combatentes Garden. The main house comprises three buildings that integrate the facade and two contiguous cottages, forming a unique architectural set. Tastefully restored, its decoration combines the classic with the contemporary. The furniture from Portugal, Asia and Africa provides you comfort and it's a true example of how the Portuguese meet with other cultures of the world, throughout their History.

**Location**

Borba

**Approach**

From Lisbon: Take the A6 motorway to Évora, Spain. After passing the service area of Estremoz, pay attention and take exit nº8 Borba, Alandroal, Vila Viçosa. Leaving the toll motorway follow the sign N4 Elvas/Estremoz/Borba (-3,5T). Right after that, enter the N4 and turn left to Borba and Elvas. After passing the petrol station take the first possibility on your right hand side to enter Borba. Keep following the road, passing a winery on the right and further on, on the left, the church of S. Bartolomeu. After that and approximately 500m after entering Borba you will find a public garden on the left This is the Largo dos Combatentes da Grande Guerra, where the Casa do Terreiro do Poço is dominating the garden.

**José Luís de Figueiredo Lopes**

6270-329 São Romão · Seia · Portugal



Casa das Tílias is typical manor house of the Beira region dating back to the 19th century, restored and opened to guests while preserving its ancient and beautiful features. Located near Seia a delightful village of the interior of Portugal in the border of the Natural Park of the Serra da Estrela, at 600 m above the sea level where one can breathe the pure mountain air and discover a different country where tradition, character and quietness are its main characteristics.

**Location**

São Romão, 2 km from Seia.

**Approach**

From Porto follow the A1 Sul towards Lisbon. Exit the motorway in the junction signposted IP5/Viseu. In Viseu follow the N231 road in direction of Seia, driving through Nelas. Arriving in Seia, follow the M231 to S. Romão and when you arrive in S. Romão just follow the signs to the house.

From Lisbon follow the A1 Norte towards Porto. Exit the motorway in the junction signposted IP3/Viseu (km 197). After 40 km and before Santa Comba Dão, turn right towards Guarda. In Nelas drive through and follow the directions of Seia. Arriving in Seia, follow the M231 to S. Romão and when you arrive in S. Romão just follow the signs to the house.

**Casa Antiga B**

Open all year

**Facilities | Activities**

Bar; Meals available on request; Gardens; Swimming pool; Walking

**Accommodation**6 Bedrooms (4 Doubles and 2 Twins)  
1 Apartment for 2 people**Email** tilias@solaresdeportugal.pt**Casa Antiga B**

Open all year

**Facilities | Activities**

Library; Table Games; Walking

**Accommodation**4 Bedrooms  
(2 Doubles and 2 Twins)**Email** timpeira@solaresdeportugal.pt**Maria de Lourdes de Azevedo B. C. Mimoso Ruiz**

Quinta dos Azevedos · Timpeira · 5000-461 Vila Real · Portugal



Located between rock and flowers, in a scene the rural mountain range of Marão and the city of Vila Real dominate the landscape, Casa da Timpeira shows its beauty, pleasing who passes by. Built in the 14th century and expanded in the 18th century, recently restored, has a history linked to Father António de Azevedo who was Camilo Castelo Branco's teacher on his youth and to whom the latter dedicated his master piece "O Bem e o Mal" (The good and the Evil). A Camilian library is being organised in honour of the great romance writer. An excellent visit for who appreciates good evenings reading in a calm environment.

**Location**

Timpeira, 1 km from Vila Real.

**Approach**

From Porto: Take the A4 to Vila Real, once in Amarante take the IP4 to Vila Real, in Vila Real the House is situated between the crossroad of Chaves and the crossroad of Bragança on the left side.

**Mário Bernardo de Magalhães e Sousa**

Arco de Baúlhe · 4860-212 Cabeceiras de Basto · Portugal



Positioned in the romantic valley of the river Tâmega, Casa da Tojeira is a beautiful 17th Century manor house. This location offers a whole array of leisure activities, including cycling, rambling, swimming, hunting and fishing. Recently restored in 1979, this manor house has retained its former glory. In nowadays the Casa da Tojeira produces the famous Vinho Verde and, in harmony between the past and the present, provides to its guests a pleasant stay with all the comfort.

**Location**

Arco de Baúlhe, 6 km from Cabeceiras de Basto.

**Approach**

From Oporto Airport: Take the A3 Road for Braga, turning off for the A11 to Guimarães, following the direction to Cabeceiras de Basto. Leave the motorway in Arco de Baulhe, and after pay the toll, follow the direction to Arco de Baulhe and from there follow the direction to Fafe. Around 1 km you will see a sign, saying Casa de Tojeira, on the right where you will see the house.

**Casa Antiga A**

Open all year

**Facilities | Activities**

Bicycles; Gardens; Gymnasium; Indoor swimming pool; Sauna; Seminars; Turkish Bath; Walking; Wine Tasting

**Accommodation**

7 Bedrooms (3 doubles and 4 twins)  
5 Apartments for 2 persons

Email [tojeira@solaresdeportugal.pt](mailto:tojeira@solaresdeportugal.pt)**Casa Antiga B**

Open all year

**Facilities | Activities**

Games room; Gardens; Swimming pool; Walking; Wine Tasting

**Accommodation**

3 Bedrooms (1 Double and 2 Twins)  
2 Apartments for 4 people

Email [torres@solaresdeportugal.pt](mailto:torres@solaresdeportugal.pt)**Manuel Correia Malheiro**

Facha · 4990-601 Ponte de Lima · Portugal



Visitors to Casa das Torres are greeted by a lofty gateway, which invites you into the spacious courtyard. This manor is a fine example of 18th Century architecture during the reign of King D.João V. Note the lovely Baroque details around each window. Visitors here will be treated to a splendid view of the lavish green countryside of the Alto-Minho. With a fantastic view, guests can appreciate the orchards are fertile and the famous wine Vinho Verde Loureiro, produced in the property, is one more reason of visit Casa das Torres.

**Location**

Facha, 6 km from Ponte de Lima.

**Approach**

From Porto Airport: Take the motorway A3 to Braga/Valença. At the km76 leave the motorway in the exit signposted Ponte da Barca/Ponte de Lima. After paying the toll, turn right to Ponte de Lima. 2 km after you will come to a roundabout, continue straight on and 1,5km after you will find another roundabout. Turn right to Viana do Castelo and 500m after you will come to a third roundabout just before the bridge. Turn left here onto the road signposted Darque, Barcelos and Porto continue along this road for 3km until de village of Seara, then turn left again and follow direction to Barcelos. As you arrive at the village of Facha, you will see Casa das Torres on your right hand side. The drive leading to the house is a small lane sloping downwards leading towards the main building of the house.

## Isidora Reguela de Sousa Girão

Oliveira · 5040-211 Mesão Frio · Portugal



The balance between the profile of the house of Torres de Oliveira, and richness of its granite freestone, endorse it as a magnificent manor from the beginning of the 18th century, in the region of the Douro. It was built in a carefully selected area, which not only allowed it to head a vast farming estate of 30 ha producing Port Wine, but also enjoys a beautiful landscape, in which the Douro River winds slowly down towards the sea. This house has very comfortable rooms where it is a pleasure to rest, while tasting the good wines produced in the property.

### Location

Oliveira, 8 km from Peso da Régua.

### Approach

From Porto Airport: Take the A4 motorway to Vila Real/Amarante. Exit the A4 at junction 17 and take the road N101 south towards Mesão Frio. Pass through Mesão Frio and take the road N108 to Peso da Régua. After 6 km you will see a small bridge, turn left before crossing the bridge, following the sign to Oliveira. Continue for approx. 3km until you reach the T-junction. Turn left here following signs to Oliveira. The house is on the left after approx. 100 m.



### Casa Antiga A

Open from April to October

### Facilities | Activities

Chapel; Meals available on request; Gardens; Swimming pool; Walking; Wine Tasting

### Accommodation

4 Bedrooms  
(3 Doubles and 1 Twin)

### Email

torresoliveira@solareshdeportugal.pt



## Pedro Sampaio Nunes

3050-511 Vacariça · Mealhada · Portugal



### Casa Antiga B

Open all year

### Facilities | Activities

Bicycles; Gardens; Swimming pool; Tennis; Walking

### Accommodation

2 Double Bedrooms  
2 Apartments for 2 people

### Email

vacarica@solareshdeportugal.pt

Located in the village of Vacariça, near Mealhada, the Solar da Vacariça is a manor house in a farming state, with architecture dating from the 16th century. In its history we can note D. Pedro II, King of Portugal, who spent the night here in 23rd of August 1704, during the time of the war with Spain. A few days in this manor house are certainly the best cure for the modern society stress, not only by the excellent location and its calm environment but also by the hospitality of the Sampaio Nunes family.

### Location

Vacariça, 4 km from Mealhada.

### Approach

From Oporto Airport: Take the Auto Estrada, motorway, A1 towards Lisbon, turning off at the exit to Mealhada. Make your way to Mealhada. From Mealhada take the N 234 towards Luso and Viseu, on this road make a left turn to Vacariça the house is situated in Vacariça.



**Maria Octávia Paiva Paulo Cardoso Guedes da Silva**

Rua António Calado, 40 · 2815 – 729 Sobreda · Portugal



The house of the Quinta de Vale Mourelos is located in the south bank of the river Tejo, next to the main road from Lisbon, in the area of Caparica - this designation, according to the legend, comes from the finding of a cloak ("Capa") full of gold coins ("Rica"=Rich) near to the city, right next to the beaches and golf fields of "Costa Azul". This house has its origins in the 18th century, but it was remodelled while still according to the original design in order to offer its visitors an enjoyable stay. Here, guests can choose between the cool water of the swimming pool or feel the sand and the sea in the nice beaches of the region.

**Location**

Monte da Caparica

**Approach**

From Lisbon: Find the signs A2 Sul, Setúbal or Caparica and follow carefully. You will eventually cross the suspension bridge (Ponte 25 de Abril). After the bridge, take the first exit to Caparica and stay in the same lane. Pass the BP service station and turn off the motorway at the sign "Sobreda". At the top of the slip road, turn left and follow the road down to a roundabout. Go almost all the way round and turn off. On your left is a "no through road" sign. Go along this approx. 250m and the house gates are on your left.

**Casa Antiga B**

From April to October

**Facilities | Activities**

Chapel; Meals available on request; Gardens; River nearby; Walking; Wine Tasting

**Accommodation**

3 Bedrooms (2 Doubles and 1 Twin)

**Email** varais@solaresdeportugal.pt**Lúcia Josefina de Castro Girão**

Cambres · 5100-426 Peso da Régua · Portugal



Set in the heart of the Port wine region, Casa de Varais overlooks the enchanting Douro valley, with its typical rock-walled terraces covered with green vineyards. Although the present building dates from the early 18th Century, the original construction is believed to be from the 15th Century. Varais has witnessed a somewhat turbulent history, having been invaded by Napoleonic troops in 1808 and almost completely destroyed by fire in 1940, colocar uma vírgula e acrescentar: making it necessary to reconstruct it, but still keeping the original architectural lines. Today however, visitors will encounter a splendid mansion in a tranquil setting.

**Location**

Cambres, 1,5 km from Peso da Régua.

**Approach**

From Porto Airport: Take the A4 to Amarante. Once in Amarante take the signs to Mesão Frio, N 101. At Mesão Frio take the N 108 to Peso da Régua. In Peso da Régua cross over the river and then a little further after crossing another bridge, turn right into Cambres and 200m after you will see the distinctive rose coloured house on the left.

**Inácio Barreto Caldas da Costa**

Várzea - Beiral do Lima · 4990-545 Ponte de Lima · Portugal



This pretty manor house is located in the peaceful village of Beiral, halfway between the towns of Ponte de Lima and Ponte da Barca, with easy access and beautiful panoramic views. It maintains an ancient tradition of hospitality, having welcomed such special guests as the Archbishop of Braga during his church visits. The house has been in the same family at least since the 16th century, having been severely modified in the 18th century. The interior of the house was totally restored and constructed a small wine cellar in the ground floor, to provide visits for taste wines of the region.

**Location**

Beiral do Lima, 10 km from Ponte de Lima.

**Approach**

From Porto Airport: Take the motorway A3 to Braga/Valença. At the km76 leave the motorway in the exit signpost Ponte da Barca/Ponte de Lima/Arco de Valdevez. After paying the toll, turn in direction to Ponte da Barca. Follow this road for approx. 7km you will come into the village of São Martinho da Gandra (there is a petrol station at the beginning of this village). After the square on your right you will see a turning right to Beiral do Lima - turn right here. Follow this road, winding upwards past a church (bear right), and approx. 100m you will find the Cruzeiro (cross stone) turn left and go by the lane and at the end you will arrive to Casa da Várzea.

**Casa Antiga B**

Open all year

**Facilities | Activities**

Badminton; Swimming pool; Walking; Wine Tasting

**Accommodation**

6 Bedrooms (4 doubles and 2 twins)

**Email** [várzea@solaresdeportugal.pt](mailto:várzea@solaresdeportugal.pt)**Casa Antiga B**

Open all year

**Facilities | Activities**

Chapel; Meals available on request; Gardens; Seminars; Swimming pool; Walking; Wine Tasting

**Accommodation**

6 Bedrooms (2 Doubles and 4 Twins)

**Email** [vilarinho@solaresdeportugal.pt](mailto:vilarinho@solaresdeportugal.pt)**Cristina Filomena Olazabal Van Zeller**

5060-630 Vilarinho de São Romão · Sabrosa · Portugal



The Casa Vilarinho de S. Romão, built during the seventeenth century and was much improved a century later. The chapel was built much earlier and was consecrated in 1462. It is distinguished by its prominent placement and harmonious architecture, which was planned to enable a balanced and enjoyable existence. Here, the charms of the past meet the comfort of the present and come together to allow for a pleasant stay in fine wine country of Douro, just a few minutes from some of region most notable landmarks. Casa de Vilarinho de São Romão has been mentioned by numberless authors. They refer to the charm of the surroundings, and to the agronomical importance.

**Location**

Vilarinho de São Romão, 3 km from Sabrosa.

**Approach**

From Porto: Follow the A4/IP4 to Vila Real. In Vila Real take the EN 322 and drive 19 km to Sabrosa. When entering Sabrosa, turn right to the EN 323 on the way to Pinhão - at 3 km distance, is Vilarinho de S. Romão. The House, which got the same name as the village, stands out on the left with its ancient chapel and imposing gate.